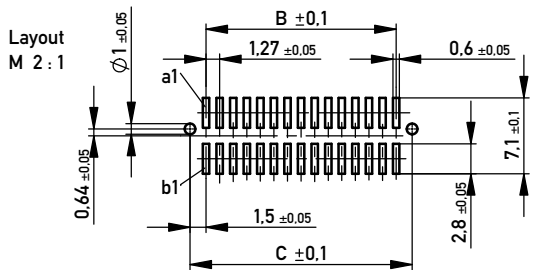
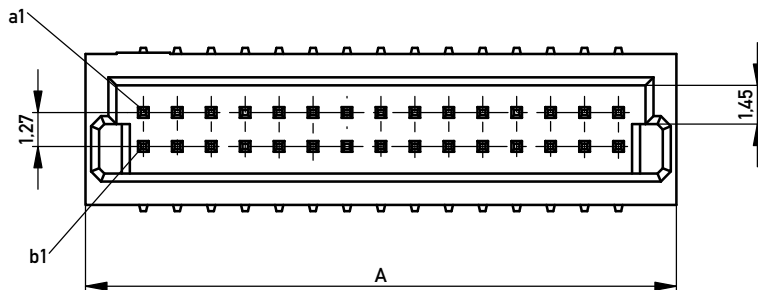
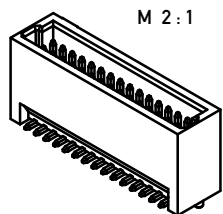
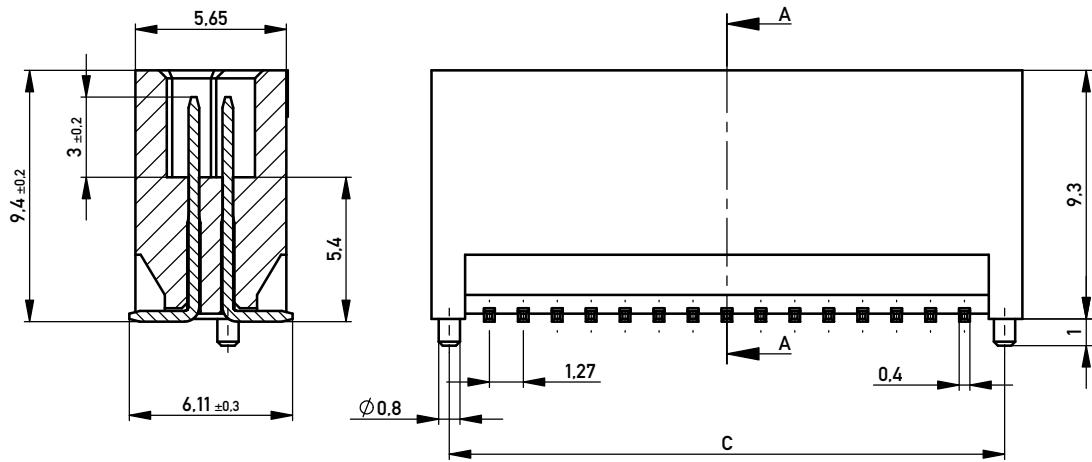
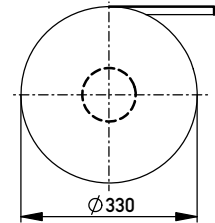


SCHNITT A-A

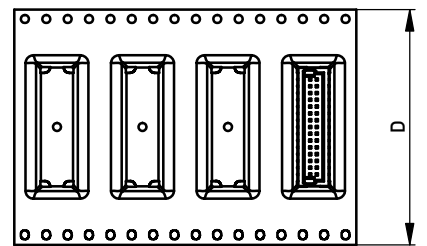


Bei Gurtverpackung ist Ansaughaube immer montiert.
Tape & reel packaging is always with assembly cap.

Verpackt in Gurtverpackung
Tape on Reel Packaging
Verpackungseinheit: 300 Stück
Packaging unit: 300pcs



Abspulrichtung - Reel off Direction



Verpackung Stange / Stange & Ansaughaube
packaging tube / tube&cap

100	9
80	11
70	12
60	14
50	17
40	21
30	27
20	38
10	64
Polzahl No. of positions	Stück / pieces

Masse und Toleranzen in Übereinstimmung mit ANSI Y15.5M-1994 /
Interpret dimensions according to ANSI Y15.5M-1994

109164	109155	109146	109137	109128	109119	100	66.56	62.23	65.23	88
109163	109154	109145	109136	109127	109118	80	53.86	49.53	52.53	72
109162	109153	109144	109135	109126	109117	70	47.51	43.18	46.18	72
109161	109152	109143	109134	109125	109116	60	41.16	36.83	39.83	56
109160	109151	109142	109133	109124	109115	50	34.81	30.48	33.48	56
109159	109150	109141	109132	109123	109114	40	28.46	24.13	27.13	44
109158	109149	109140	109131	109122	109113	30	22.11	17.78	20.78	44
109157	109148	109139	109130	109121	109112	20	15.76	11.43	14.43	32
109156	109147	109138	109129	109120	109111	10	9.41	5.08	8.08	24
Id-Nr. tape&reel 100 mating- cycles	Id-Nr. tape&reel 10 mating- cycles	Id-Nr. tube&cap 100 mating- cycles	Id-Nr. tube&cap 10 mating- cycles	Id-Nr. tube 100 mating- cycles	Id-Nr. tube 10 mating- cycles	Polzahl no of positions	Mass A	Mass B	Mass C	Mass D

Information: All rights reserved. Only for Information. To ensure that this is the latest version of this drawing, please contact one of the ERNI companies before using.

Tolerances: All Dimensions in mm

Scale: 5:1

Designation: **MiniMez Vertical Male SMT with locating pegs 5,4mm**

Part Number: **109110**

www.ERNI.com

Class: MINIMEZ

Index: _____ Date: _____

Copyright by ERNI GmbH. Proprietary notice pursuant to ISO 9006 to be observed.