

DINO-LITE LONG WORKING DISTANCE



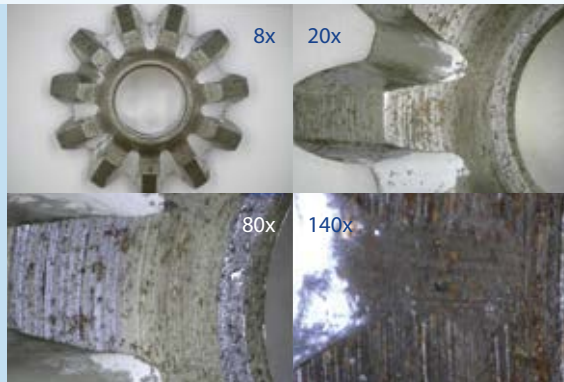
DINO-LITE LONG WORKING DISTANCE

DINO-LITE LONG WORKING DISTANCE More information on: www.dino-lite.eu/longworkingdistance



Key features

- ▶ Magnifications of 5 to 140 x
- ▶ Long working distance of up to 22,5 cm
- ▶ 1.3 megapixel or 5 megapixel
- ▶ With or without polarization filter
- ▶ Aluminum alloy housing or composite housing
- ▶ Edge series with Extended Depth of Field (EDOF) and Extended Dynamic Range (EDR)



For tasks where extra distance to the object and a larger field of view is required Dino-Lite offers a series of Long Working Distance (LWD) microscopes. The extra working distance and larger field of view make this series an ideal solution for tasks such as repair, rework or assembly or for working with bulky or fragile objects that cannot be touched.

Microscopes in this range offer an image resolution of 1.3 megapixel or 5 megapixel, a USB connection and include the user-friendly DinoCapture software. Models with built-in polarizer to reduce reflection or models with an extra robust metal housing are also available. The maximum magnification reaches 140 times which is usually more than enough for this kind of applications.



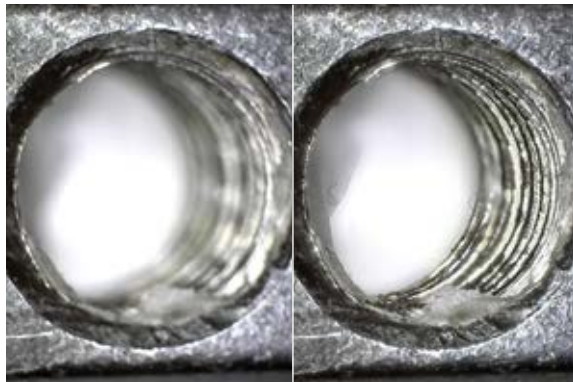
MODEL	RESOLUTION	MAGNIFICATION	CONNECTIVITY	LONG WORKING DISTANCE	MEASUREMENT & CALIBRATION	TYPE OF LEDS	NUMBER OF LEDS	EXCHANGABLE CAPS	POLARIZER	IR FILTER	METAL HOUSING	ESD-SAFE	ADDITIONAL FEATURES	PRICE RANGE	ALSO AVAILABLE
LONG WORKING DISTANCE (LWD)															
AM4113TL	1,3 Megapixel	10-90x	USB 2.0	✓	✓	white	8	-	-	IR cut-filter >650 nm	-	-	-	€200,00 - €350,00	
AM4013MTL	1,3 Megapixel	10-90x	USB 2.0	✓	✓	white	8	-	-	IR cut-filter >650 nm	✓	✓	-	€350,00 - €550,00	
AM4113TL-M40	1,3 Megapixel	5-40x	USB 2.0	✓	✓	white	8	-	-	IR cut-filter >650 nm	-	-	-	€200,00 - €350,00	
AM4113ZTL	1,3 Megapixel	10-90x	USB 2.0	✓	✓	white	8	-	✓	IR cut-filter >650 nm	-	-	-	€350,00 - €550,00	
AM4013MZTL	1,3 Megapixel	10-90x	USB 2.0	✓	✓	white	8	-	✓	IR cut-filter >650 nm	✓	✓	-	€350,00 - €550,00	
AM4115TL	1,3 Megapixel	10-140x	USB 2.0	✓	✓	white	8	✓	-	IR cut-filter >650 nm	-	-	-	€350,00 - €550,00	
AM4115ZTL	1,3 Megapixel	10-140x	USB 2.0	✓	✓	white	8	✓	✓	IR cut-filter >650 nm	-	-	-	€350,00 - €550,00	
AM4515ZTL	1,3 Megapixel	10-140x	USB 2.0	✓	✓	white	8	✓	✓	IR cut-filter >650 nm	-	-	AMR	€350,00 - €550,00	AM4515TL (without polarizer)
AM4815ZTL	1,3 Megapixel	10-140x	USB 2.0	✓	✓	white	8	✓	✓	IR cut-filter >650 nm	-	-	EDOF+EDR	€550,00 and above	AM4815TL (without polarizer)
AD4113ZTL	1,3 Megapixel	20-90x	USB 2.0	✓	✓	white	8	✓	✓	IR cut-filter >650 nm	-	-	-	€350,00 - €550,00	for usage with FC-L-MA1 mirror angle
AD4013MZTL	1,3 Megapixel	20-90x	USB 2.0	✓	✓	white	8	✓	✓	IR cut-filter >650 nm	✓	✓	-	€350,00 - €550,00	for usage with FC-L-MA1 mirror angle
AM7115MZTL	5 Megapixel	10-140x	USB 2.0	✓	✓	white	8	✓	✓	IR cut-filter >650 nm	✓	✓	-	€550,00 and above	AM7115MTL (without polarizer)
AM7515MZTL	5 Megapixel	10-140x	USB 2.0	✓	✓	white	8	✓	✓	IR cut-filter >650 nm	✓	✓	AMR	€550,00 and above	AM7515MTL (without polarizer)
AM7815MZTL	5 Megapixel	10-140x	USB 2.0	✓	✓	white	8	✓	✓	IR cut-filter >650 nm	✓	✓	EDOF+EDR	€550,00 and above	AM7815MTL (without polarizer)

HIGHLIGHTED PRODUCT More information on www.dino-lite.eu/am4815ztl

AM4815ZTL - EDGE

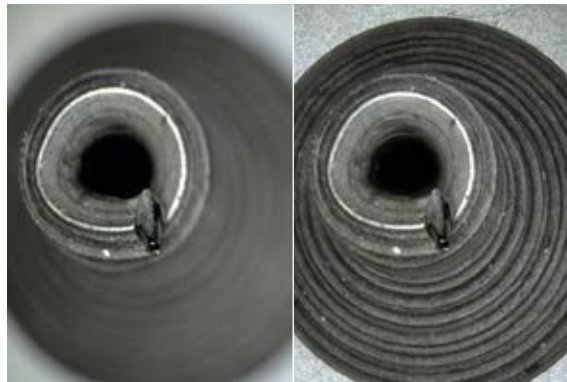
The AM4815ZTL combines features such as a Polarizer, Long Working Distance and a magnification range of 10x - 140x, with image processing features such as Extended Depth of Field (EDOF) and Extended Dynamic Range EDR.

With the Extended Dynamic Range (EDR) feature, the details of darker or brighter areas within the object can be revealed by stacking images at different exposure levels. The Extended Depth of Field (EDOF) feature automatically stacks images at different focus level to improve the depth of field on rough or uneven surfaces. Different caps are supplied with the microscope making the Dino-Lite Edge the perfect choice for any professional application.




Without EDOF

With EDOF



Without EDOF

With EDOF

-  USB 2.0
-  LONG WORKING DISTANCE
4-15 cm
-  CONTINUOUS
~10x-140x
-  EXTENDED DYNAMIC RANGE
-  EXTENDED DEPTH OF FIELD
EDOF
-  1.3 MEGAPIXEL
1280 x 1024
-  8 WHITE LEDs
SWITCHABLE
-  EXCHANGEABLE CAP
-  POLARIZER
ANTI-REFLECTION