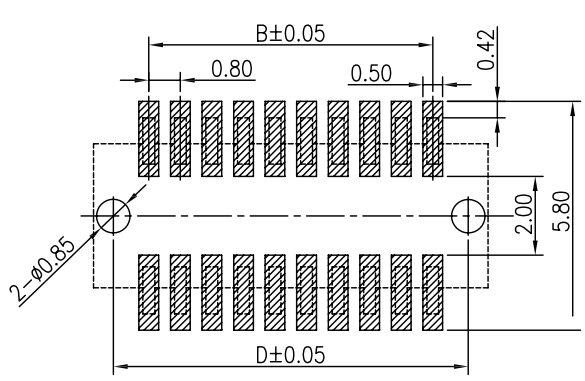
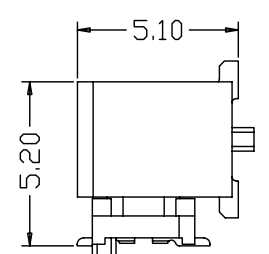
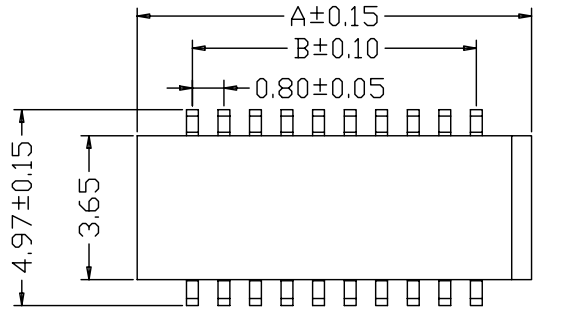
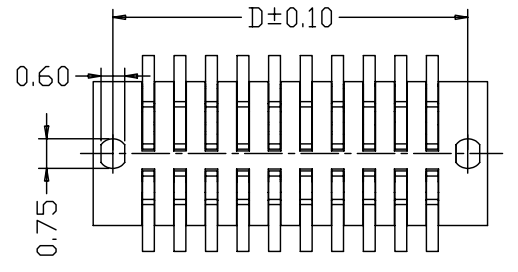
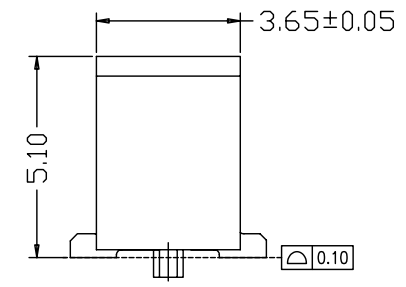
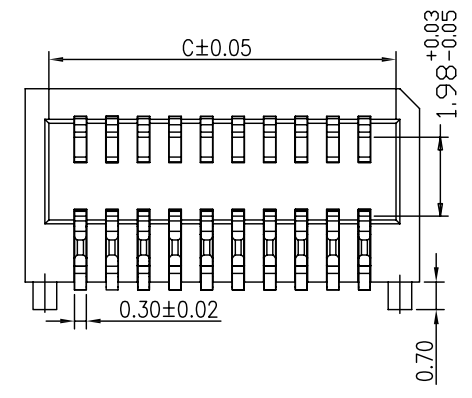


REV.	DATE	ECN NO.	MODIFICATION	APPROVER
A	2014/07/07	/	NEW	Vicky



MATING HEIGHT
SCALE: 1.25:1

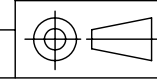
RECOMMENDED PCB PATTERN DIM.
TOLERANCE : ±0.05



SPECIFICATIONS:
Voltage Rating: 60V DC
Current Rating: 0.5A Max.(Each Pin)
Contact Resistance: 60mΩ MAX
Insulation Resistance: 800MΩ MIN
Dielectric Withstanding : AC 500V
Operating Temperature : -25°C~+85°C
Contact Material: Copper Alloy
Insulator Material: Thermoplastic, UL94V-0
Plating: Gold Plated.

PIN NO.	A.	B.	C.	D.
4	3.60	0.80	2.40	2.60
6	4.40	1.60	3.20	3.40
8	5.20	2.40	4.00	4.20
10	6.00	3.20	4.80	5.00
12	6.80	4.00	5.60	5.80
14	7.60	4.80	6.40	6.60
16	8.40	5.60	7.20	7.40
18	9.20	6.40	8.00	8.20
20	10.00	7.20	8.80	9.00
22	10.80	8.00	9.60	9.80
24	11.60	8.80	10.40	10.60
26	12.40	9.60	11.20	11.40
28	13.20	10.40	12.00	12.20
30	14.00	11.20	12.80	13.00
32	14.80	12.00	13.60	13.80
34	15.60	12.80	14.40	14.60
36	16.40	13.60	15.20	15.40
38	17.20	14.40	16.00	16.20
40	18.00	15.20	16.80	17.00
42	18.80	16.00	17.60	17.80
44	19.60	16.80	18.40	18.60
46	20.40	17.60	19.20	19.40
48	21.20	18.40	20.00	20.20
50	22.00	19.20	20.80	21.00
52	22.80	20.00	21.60	21.80

GENERAL TOLERANCE			UNITS	mm	NAME:	BTB	ATOM® 深圳市爱特姆科技有限公司 SHENZHEN ATOM TECHNOLOGY CO., LTD.		
SELECT	✓				PART NO:	BTB080***-F2S11***	TITLE: BTB0.8mm 2*XP 单槽 母座 侧插 带定位柱 合高H=5.2mm		
TOL.	1	2	3		APPD:	Jason	DWG NO. ATOM-A03549		
X.XXX	±0.05	±0.05	±0.15		CHKD:	Vicky			
X.XX	±0.15	±0.13	±0.25		DR:	Jillian			
X.X	±0.25	±0.25	±0.50						
X.		±0.38	±1.00						
ANGLE	±2'								



SCALE	SHEET	REV
1:1	1/1	A