

4

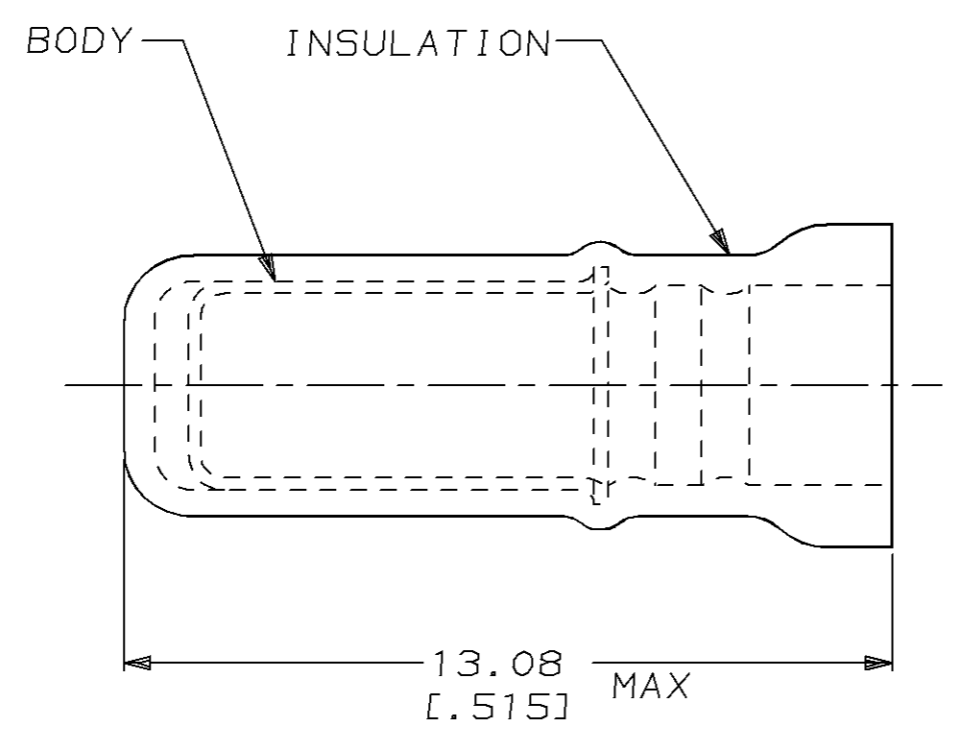
3

2

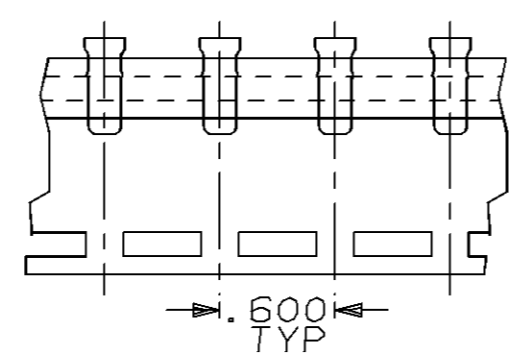
1

THIS DRAWING IS UNPUBLISHED. RELEASED FOR PUBLICATION ,19 .  
 © COPYRIGHT 19 BY AMP INCORPORATED. ALL RIGHTS RESERVED.

LOC	DIST	REVISIONS					
		P	LTR	DESCRIPTION	DATE	DWN	APVD
G	14		N	REV / REDRAWN / 0720-0482-95 & 0720-0002-95	14FEB95	LO	ME



1. USE FOR AN UNSTRIPPED (SINGLE) WIRE END ONLY
2. WIRE INSUL DIA, 2.03-2.92 [ .080-.115 ]



SPARE WIRE CAPS ON TAPE  
(SCALE 1:1)

QTY	PACKAGE TYPE	PART NO
100	LOOSE PIECE, BOX	8-324485-1
4000	ON TAPE, REEL	2-324485-1
1000	LOOSE PIECE	324485

AMP INCORPORATED  
CUSTOMER SERVICE SYSTEM

FOR ADDITIONAL PRODUCT INFORMATION OR COPIES OF DRAWINGS AND TECHNICAL DOCUMENTS	PRODUCT INFORMATION CENTER 1-800-522-6752
FOR APPLICATION TOOLING INFORMATION	TOOLING ASSISTANCE CENTER 1-800-722-1111
FOR ORDER ENTRY	1-800-526-5142

MAX RECOMMENDED OPERATING TEMPERATURE:  
105°C [221°F]

VOLTAGE RATING:  
-

CIRCULAR MIL AREA:  
-

THIS DRAWING IS A CONTROLLED DOCUMENT FOR AMP INCORPORATED. IT IS SUBJECT TO CHANGE AND THE CONTROLLING ENGINEERING ORGANIZATION SHOULD BE CONTACTED FOR THE LATEST REVISION.

DIMENSIONS:	TOLERANCES UNLESS OTHERWISE SPECIFIED.
mm [in]	
	0 PLC ±-
	1 PLC ±-
	2 PLC ±0.20 [ .008 ]
	3 PLC ±-
	4 PLC ±-
ANGLES	±-

MATERIAL BODY, CU PER ASTM B152  
INSUL, NYLON, COLOR, RED

FINISH BODY, TIN PLATE  
PER MIL-T-10727

DWN L OLMEDA 14FEB95	AMP Incorporated Harrisburg, PA 17105-3608
CHK M ELLIS 14FEB95	
APVD T MICHIELUTTI 14FEB95	
NAME	
PRODUCT SPEC	SPARE WIRE CAP, RED
APPLICATION SPEC	
WEIGHT -	SIZE A3 CAGE CODE 00779 DRAWING NO C-324485
CUSTOMER DRAWING	SCALE 8:1 SHEET 1 OF 1 REV N