

# BOS

## BOS 910



BOS 910  
Order no.: 34910002

\* = Available on request.

### Characteristics

Colour of enclosure group

Agate grey

Colour of enclosure group

Agate grey

Protection class

IP 65

Enclosure Material

ABS, seal made of CR; for details see Technical Information

Scope of delivery

Lid with seal, base, screws, display screen (enclosed unfitted)

Note

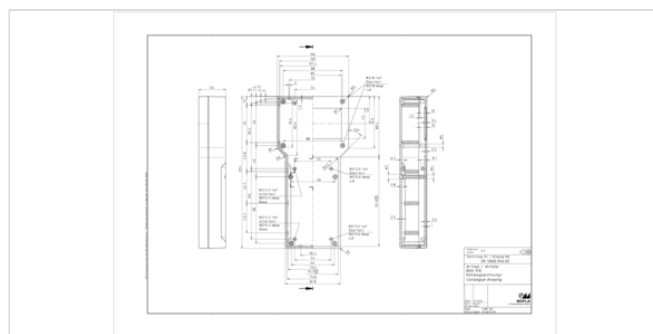
Fitting of display screen on request

### Dimensions

Dimensions

224 x 106 x 40 mm

Product drawing



### Important!

To compensate for pressure when temperatures change and cause moisture in the enclosure, we recommend that you use a pressure compensation element.

» Additional information

### Technical documentation / Downloads

Technical drawings

3D product data in STEP format: Registration necessary

Product drawing in PDF format: 34910002 BOS-910.pdf (63.7 KB)

Product drawing in DXF format: 34910002 BOS-910.dxf (574.4 KB)

20.09.2019

Product information

BOS GB.pdf (746.5 KB)

Drawing for mechanical processing: 34910002 BOS-910-G.dxf (586.9 KB)

Milling contours are shown here as a DXF file. (Sub D, USB, HDMI, cable glands, ...)

## Matching accessories

---



### Table stand BOS 900-903 / BOS 910-913

34900002 STD 900

For BOS  
900/901/902/903/910/911/912/913

Agate grey



### Display adapter BOS 910-913

34913001\* ADS 910-I

34913002\* ADS 910-II

34913003\* ADS 910-III



### Screws (SHR) and distance bolts (DIBLZ) for mounting bosses in plastic enclosures

59006190 SHR Z KA25x6

SD = 2.5 / ND = 2.0 / KD = 4.4

### Membrane keypad for BOS 900-913, with 45 keys

70349045\* FT 90045 D

### Membrane keypad for BOS 900-913, with 35 keys

70349945\* FT 90045MDT