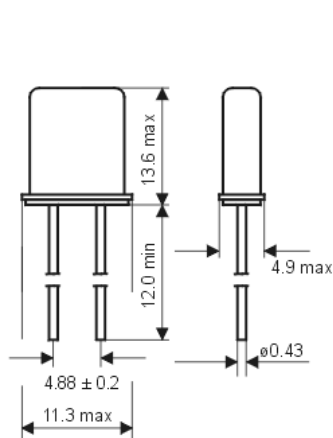


Quartz Crystal

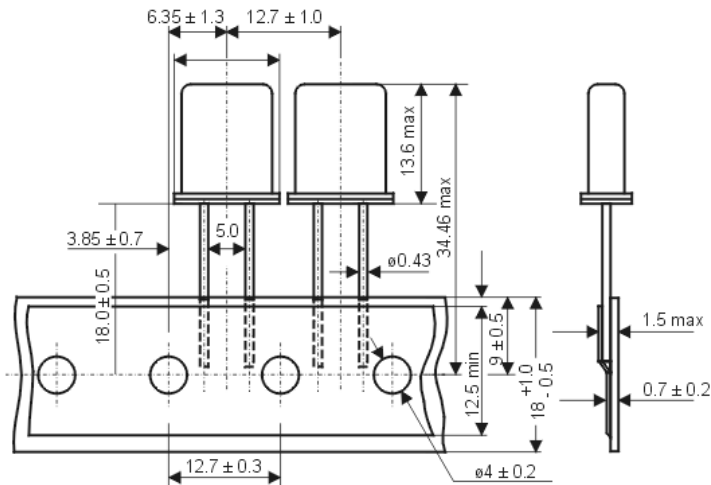
HC-49/U

| | | |
|---------------------------------------|------------------|--------------------------|
| model | KX-49 | |
| frequency range | 1,84320 ~ 30 MHz | |
| mode | fundamental | |
| operating temperature | standard | -20° ~ + 70°C |
| | available | -40° ~ + 85°C (= KX-49T) |
| | available | -40° ~ +105°C (= KX-49E) |
| frequency tolerance at +25°C | standard: | ± 30 ppm |
| | available: | ± 5 ~ 50 ppm |
| temperature tolerance at -20° ~ +70°C | standard: | ± 50 ppm |
| | available: | ± 5 ~ 50 ppm |
| load capacitance C_L | standard: | 30 pF |
| | avail: | 10 ~ 30 pF |
| series resonance R1 max. | 1,8432 | 600 Ohm |
| | 2,0 | 400 Ohm |
| | 2,4576 | 200 Ohm |
| | 3,0 | 150 Ohm |
| | > 4,0 | 60 Ohm |
| aging at +25°C (first year) max. | ± 5 ppm | |
| shunt capacitance C_0 max. | 7 pF | |
| drive level max | 0,5 ~ 2 mW | |
| order no. | 12.xxxxx | |

Dimensions (mm):

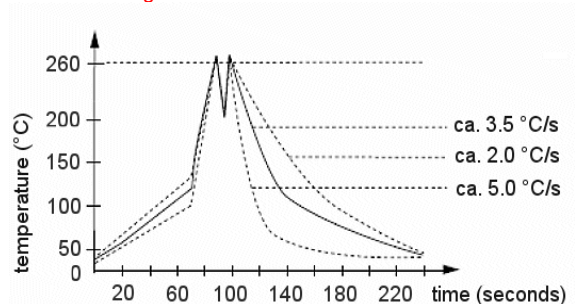


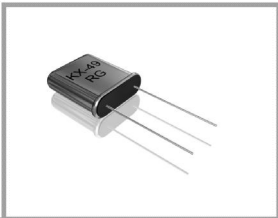
Tape specification:



taped crystals upon request

Wave soldering condition:



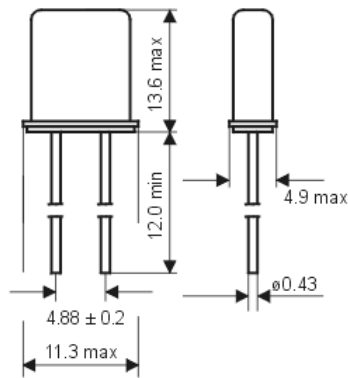


Quartz Crystal

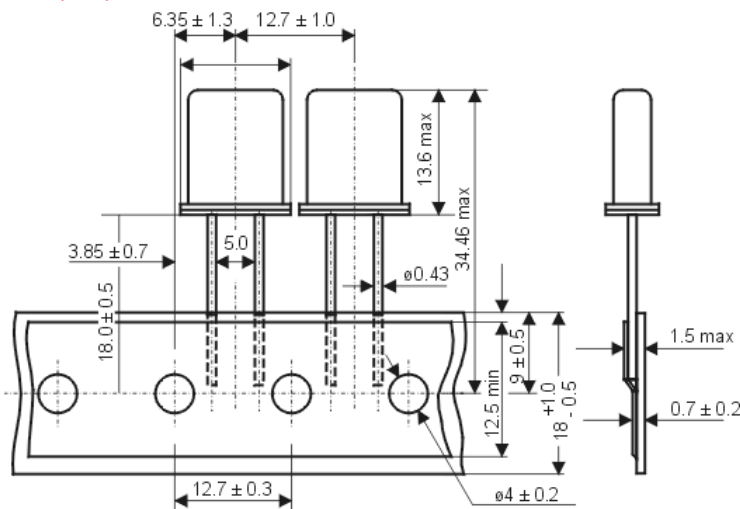
HC-49/U

| | |
|---------------------------------------|--|
| model | KX-49 |
| frequency range | 20 ~ 90 MHz |
| mode | 3 rd overtone |
| operating temperature | standard -20° ~ + 70°C available -40° ~ + 85°C (= KX-49T) available -40° ~ +105°C (= KX-49E) |
| frequency tolerance at +25°C | standard: ± 30 ppm available: ± 5 ~ 50 ppm |
| temperature tolerance at -20° ~ +70°C | standard: ± 50 ppm available ± 5 ~ 50 ppm |
| load capacitance C_L | 20,0~40,0 MHz: 20~30 pF > 40,0 MHz: series |
| series resonance R1 max. | 30 ~ 60 Ohm |
| aging at +25°C (first year) max. | ± 5 ppm |
| shunt capacitance C_0 max. | 7 pF |
| drive level max | 0,5 ~ 2 mW |
| order no. | 12.xxxxx |

Dimensions (mm):

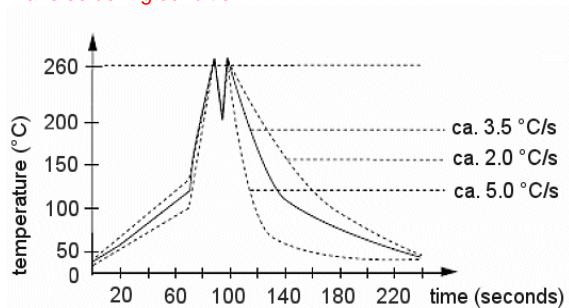


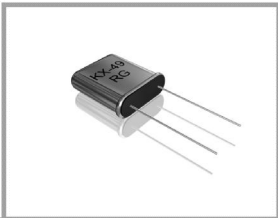
Tape Specification:



taped crystals upon request

Wave soldering condition:



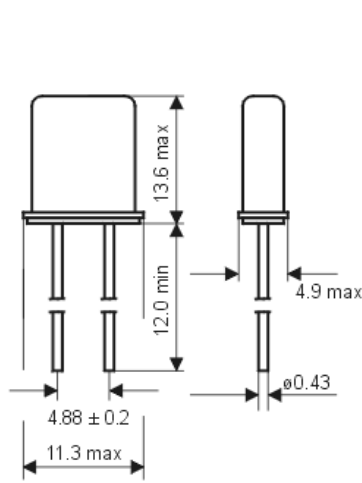


Quartz Crystal

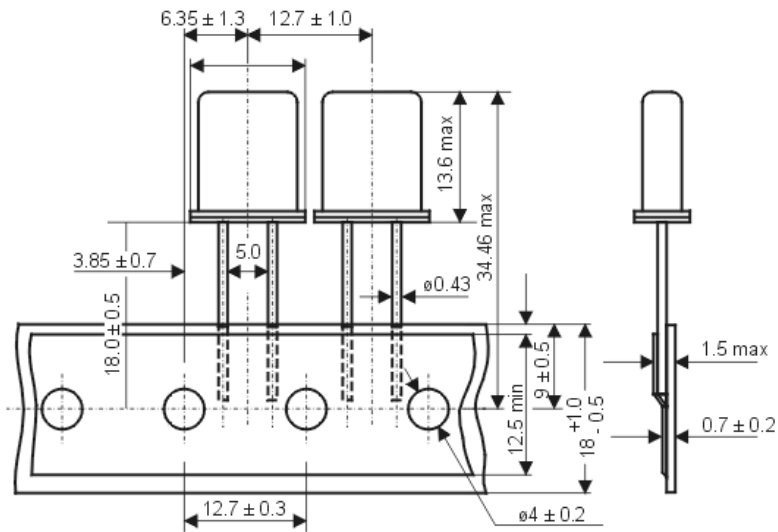
HC-49/U

| | |
|---------------------------------------|--|
| model | KX-49 |
| frequency range | 50 ~ 150 MHz |
| mode | 5 th overtone |
| operating temperature | standard -20° ~ + 70°C available -40° ~ + 85°C (= KX-49T) available -40° ~ +105°C (= KX-49E) |
| frequency tolerance at +25°C | standard: ± 30 ppm available: ± 5 ~ 50 ppm |
| temperature tolerance at -20° ~ +70°C | standard: ± 50 ppm available ± 5 ~ 50 ppm |
| load capacitance C _L | series |
| series resonance R1 max. | 40 ~ 70 Ohm |
| aging at +25°C (first year) max. | ± 5 ppm |
| shunt capacitance C ₀ max. | 7 pF |
| drive level max | 0,1 ~ 0,5 mW |
| order no. | 12.xxxxx |

Dimensions (mm):

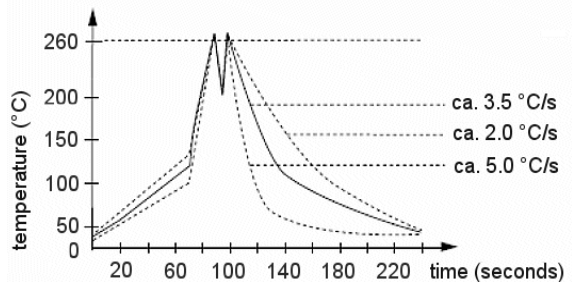


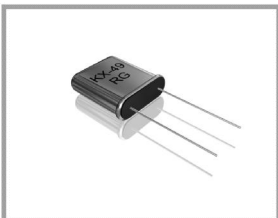
Tape specification:



taped crystals upon request

Wave soldering condition:



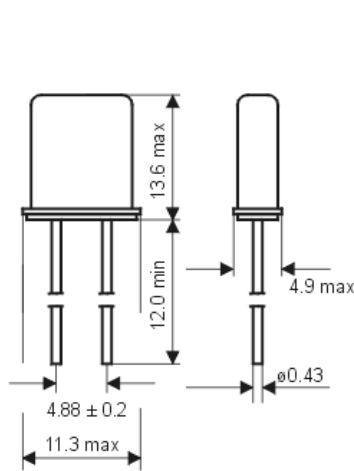


Quartz Crystal

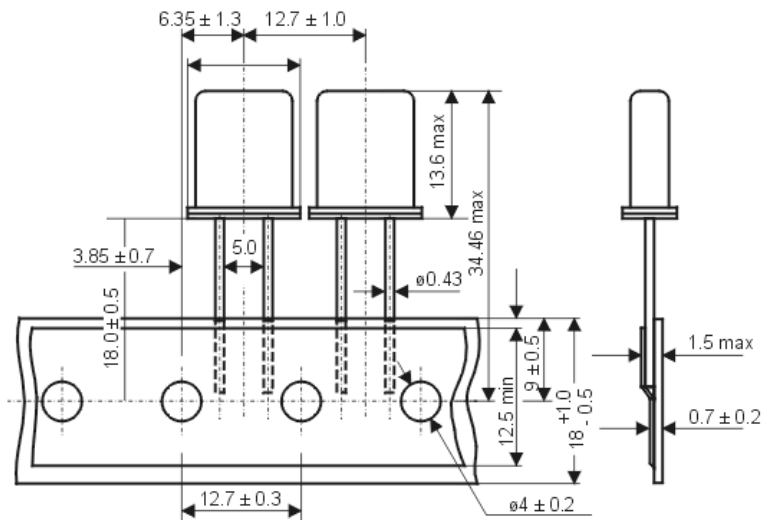
HC-49/U

| | |
|---------------------------------------|--|
| model | KX-49 |
| frequency range | 110 ~ 200 MHz |
| mode | 7 th overtone |
| operating temperature | standard -20° ~ + 70°C available -40° ~ + 85°C (= KX-49T) available -40° ~ +105°C (= KX-49E) |
| frequency tolerance at +25°C | standard: ± 30 ppm available: ± 5 ~ 50 ppm |
| temperature tolerance at -20° ~ +70°C | standard: ± 50 ppm available ± 5 ~ 50 ppm |
| load capacitance C _L | series |
| series resonance R1 max. | 80 ~ 120 Ohm |
| aging at +25°C (first year) max. | ± 5 ppm |
| shunt capacitance C ₀ max. | 7 pF |
| drive level max | 0,1 ~ 0,5 mW |
| order no. | 12.xxxxx |

Dimensions (mm):



Tape specification:



taped crystals upon request

Wave soldering condition:

