

MULTI-PURPOSE, DIE-CAST ALUMINIUM BOX WITH MOUNTING FLANGE



PRODUCT INFORMATION

MATERIAL:

- Aluminium alloy ADC-12 to Japan (JIS)

FEATURES:

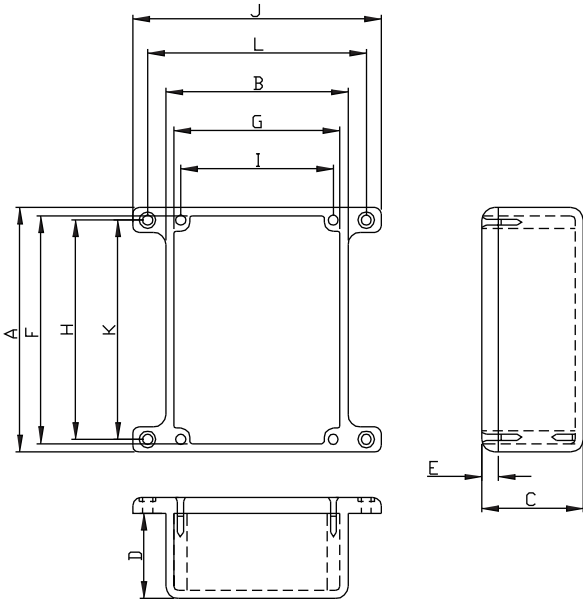
- Ideal for RF projects or for projects which are subject to weather.
- Robust, light weight and easy to machine.
- Ideal for projects involving heat as the case itself makes an excellent heatsink.

APPLICATION:

- Electrical
- Network junction box
- Stomp box (Guitar Pedal)

ITEM No.	EXTERNAL DIMENSION(mm)
G0123F	90 x 38 x 30
G0124F	111 x 60 x 30
G0234F	119 x 93.5 x 56.5
G0247F	187 x 118 x 56.5
G0347F	187 x 118 x 81.7
G0470F	50.8 x 50.8 x 31.8
G0471F	110 x 82.5 x 44.5
G0472F	120.5 x 80 x 59.2
G0473F	119 x 93.5 x 34
G0474F	120.5 x 120.5 x 59.2
G0475F	120.5 x 120.5 x 95.2
G0476F	152.4 x 82.5 x 50.8
G0477F	187 x 118 x 38
G0478F	190.5 x 190.5 x 66.5
G0479F	111 x 60 x 54

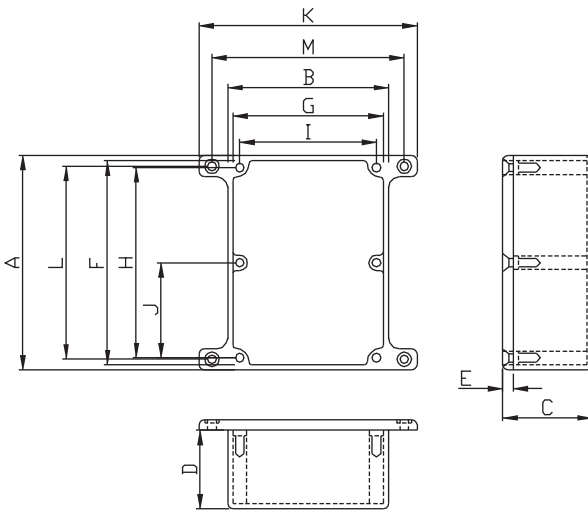
G0123F, G0124F, G0234F, G0470F, G0471F, G0472F, G0473F, G0474F, G0475F, G0479F



Dimension in mm

PART NO.	A	B	C	D	E	F	G	H	I	J	K	L
G0123F	92.0	38.0	31.0	26.9	4.0	86.0	31.7	82.5	28.6	63.1	82.5	50.0
G0124F	111.0	60.0	30.0	26.0	4.0	107.2	56.2	101.6	50.8	84.5	101.3	72.1
G0234F	119.0	93.5	56.5	52.5	4.0	114.2	88.7	109.5	84.1	118.5	105.6	104.7
G0470F	50.8	50.8	31.8	27.8	4.0	47.4	47.4	41.2	41.2	75.8	41.4	62.8
G0471F	110.0	82.5	44.5	40.5	4.0	105.2	77.7	100.5	73.0	107.5	100.7	94.7
G0472F	120.5	80.0	59.2	55.2	4.0	115.7	75.2	111.1	70.5	105.0	111.3	92.1
G0473F	119.0	93.5	34.0	30.0	4.0	114.2	88.7	109.5	84.2	118.5	105.6	104.7
G0474F	120.5	120.5	59.2	55.2	4.0	115.7	115.7	111.1	111.1	145.4	111.4	132.5
G0475F	120.5	120.5	95.2	91.2	4.0	115.7	115.7	111.1	111.1	145.4	111.4	132.5
G0479F	111.0	60.0	54.0	50.0	4.0	107.2	56.2	101.6	50.8	84.5	101.3	72.1

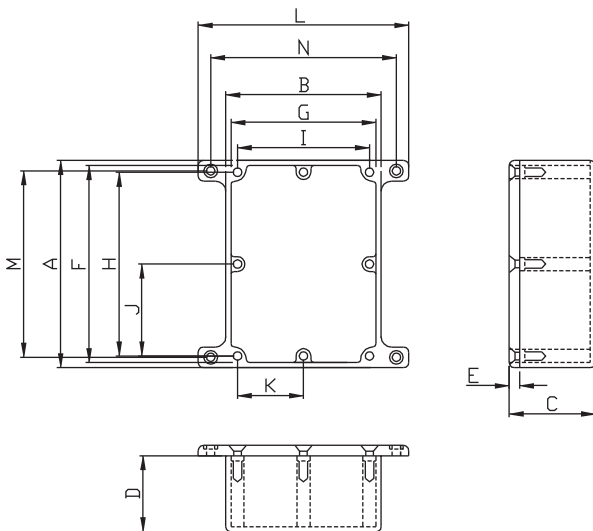
G0247F, G0347F, G0476F, G0477F



Dimension in mm

PART NO.	A	B	C	D	E	F	G	H	I	J	K	L	M
G0247F	187.0	118.0	56.0	52.5	4.0	182.2	113.2	177.8	109.5	88.9	143.0	178.2	130.0
G0347F	187.0	118.0	81.7	77.7	4.0	182.2	113.2	177.8	109.5	88.9	143.0	178.2	130.0
G0476F	152.4	82.5	50.8	46.8	4.0	147.6	77.7	142.5	72.6	71.3	107.5	142.7	94.6
G0477F	187.0	118.0	38.0	34.0	4.0	182.2	113.2	177.8	109.5	88.9	143.0	178.2	130.0

G0478F



PART NO.	A	B	C	D	E	F	G
G0478F	190.5	190.5	66.5	62.5	4.0	185.7	185.7
	H	I	J	K	L	M	N
	180.6	180.6	90.3	90.3	215.5	180.9	202.5