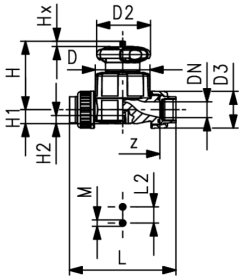
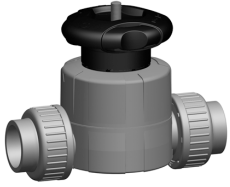


GF Piping Systems Datasheet

valid from
3/8/10

Diaphragm valves new generation

Diaphragm valve type 514 ABS With solvent cement sockets BS



Model:

- Double flow rate compared to predecessor
- One housing nut replaces four screws
- Handwheel with built-in locking mechanism
- For easy installation and removal
- Short overall length

Option:

- Individual configuration of the valve (see diagram)
- Self adjusting multifunctional module with integrated limit switches

Inch	DN [mm]	PN	kv-value ($\Delta p=1$ bar) [l/min]	EPDM Code	PTFE/EPDM Code	kg
1/2	15	10	125	169 514 512	169 514 532	0.000
3/4	20	10	271	169 514 513	169 514 533	0.000
1	25	10	481	169 514 514	169 514 534	0.000
1 1/4	32	10	759	169 514 515	169 514 535	0.000
1 1/2	40	10	1263	169 514 516	169 514 536	0.000
2	50	10	1728	169 514 517	169 514 537	0.000

Inch	D [mm]	D2 [mm]	D3 [mm]	L [mm]	L2 [mm]	H [mm]	H1 [mm]	H2 [mm]	M	z [mm]	Lift = Hx [mm]
1/2	65	65	43	128	25	73	14	12	M6	96	7
3/4	80	65	51	152	25	81	18	12	M6	114	10
1	88	87	58	166	25	107	22	12	M6	122	13
1 1/4	101	87	72	192	45	115	26	15	M8	140	15
1 1/2	117	135	83	222	45	148	32	15	M8	160	19
2	144	135	100	266	45	166	39	15	M8	190	25

The technical data are not binding and not expressly warranted characteristics of the goods. They are subject to change. Our General Conditions of Sale apply.

Georg Fischer Piping Systems Ltd, Postfach, CH-8201 Schaffhausen/Switzerland
 Phone +41 -(0)52-631 1111
 e-mail: info.ps@georgfischer.com
 Internet: <http://www.piping.georgfischer.com>