

## Han 10B-HTE-LC-4 Pegs-M25

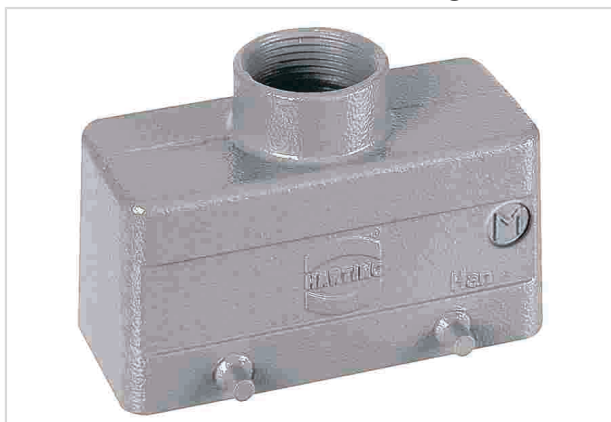


Image is for illustration purposes only. Please refer to product description.

Part number	19 30 010 1421
Specification	Han 10B-HTE-LC-4 Pegs-M25
HARTING eCatalogue	<a href="https://b2b.harting.com/19300101421">https://b2b.harting.com/19300101421</a>

### Identification

Category	Hoods/Housings
Series of hoods/housings	Han <sup>®</sup> B
Type of hood/housing	Hood
Type	Low construction

### Version

Size	10 B
Version	Top entry
Cable entry	1x M25
Locking type	Double locking lever
Field of application	Standard hoods/housings for industrial connectors

### Technical characteristics

Limiting temperature	-40 ... +125 °C
Degree of protection acc. to IEC 60529	IP65 IP66 IP67
Type rating acc. to UL 50 / UL 50E	4 4X 12

### Material properties

Material (hood/housing)	Aluminium die-cast
Surface (hood/housing)	Powder-coated



Pushing Performance

## Material properties

Colour (hood/housing)	RAL 7037 (dust grey)
RoHS	compliant
ELV status	compliant
China RoHS	e
REACH Annex XVII substances	Not contained
REACH ANNEX XIV substances	Not contained
REACH SVHC substances	Not contained
California Proposition 65 substances	Yes

## Specifications and approvals

Approvals	DNV GL
UL / CSA	UL 1977 ECBT2.E235076 CSA-C22.2 No. 182.3 ECBT8.E235076
CE	Yes

## Commercial data

Packaging size	1
Net weight	124 g
Country of origin	Germany
European customs tariff number	85389099
eCl@ss	27440202 Shell for industrial connectors

# Mouser Electronics

Authorized Distributor

Click to View Pricing, Inventory, Delivery & Lifecycle Information:

[HARTING:](#)

[19300101421](#)