

Single Phase Silicon Bridge Rectifier

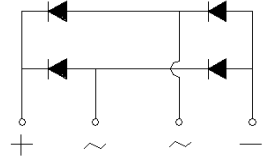
$V_{RRM} = 600\text{ V} - 1000\text{ V}$
 $I_O = 15\text{ A}$

Features

- High efficiency
- Silicon junction
- Metal case
- Types from 600 V to 1000 V V_{RRM}
- Not ESD Sensitive

Mechanical Data

Case: Mounted in the bridge encapsulation
 Mounting position: Hole for #10 screw
 Polarity: Marked on case



KBPC-T/W Package



Maximum ratings at $T_c = 25\text{ }^\circ\text{C}$, unless otherwise specified (KBPCXXXXT uses KBPC-T package while KBPCXXXXW uses KBPC-W package)

| Parameter | Symbol | Conditions | KBPC1506T/W | KBPC1508T/W | KBPC1510T/W | Unit |
|---------------------------------|-----------|------------|-------------|-------------|-------------|------------------|
| Repetitive peak reverse voltage | V_{RRM} | | 600 | 800 | 1000 | V |
| RMS reverse voltage | V_{RMS} | | 420 | 560 | 700 | V |
| DC blocking voltage | V_{DC} | | 600 | 800 | 1000 | V |
| Operating temperature | T_j | | -55 to 150 | -55 to 150 | -55 to 150 | $^\circ\text{C}$ |
| Storage temperature | T_{stg} | | -55 to 150 | -55 to 150 | -55 to 150 | $^\circ\text{C}$ |

Electrical characteristics at $T_c = 25\text{ }^\circ\text{C}$, unless otherwise specified

Single phase, half sine wave, 60 Hz, resistive or inductive load
 For capacitive load derate current by 20%

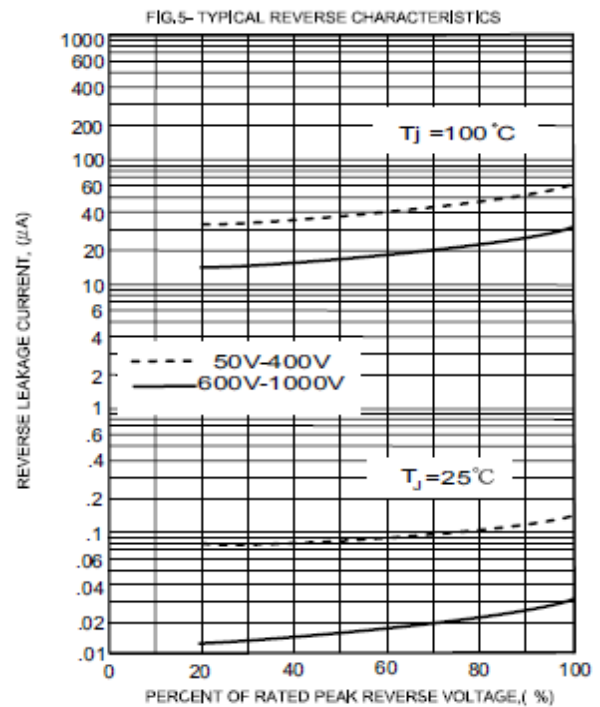
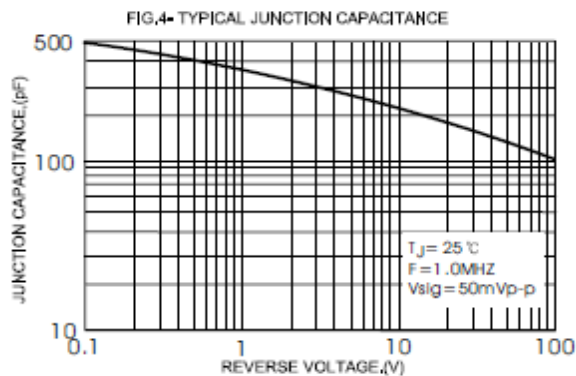
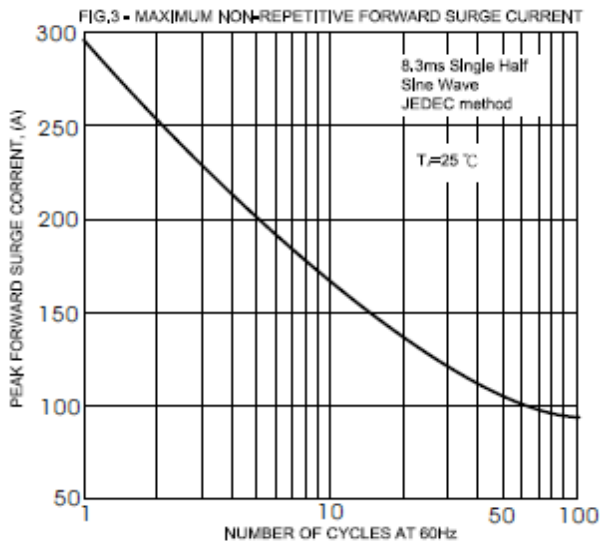
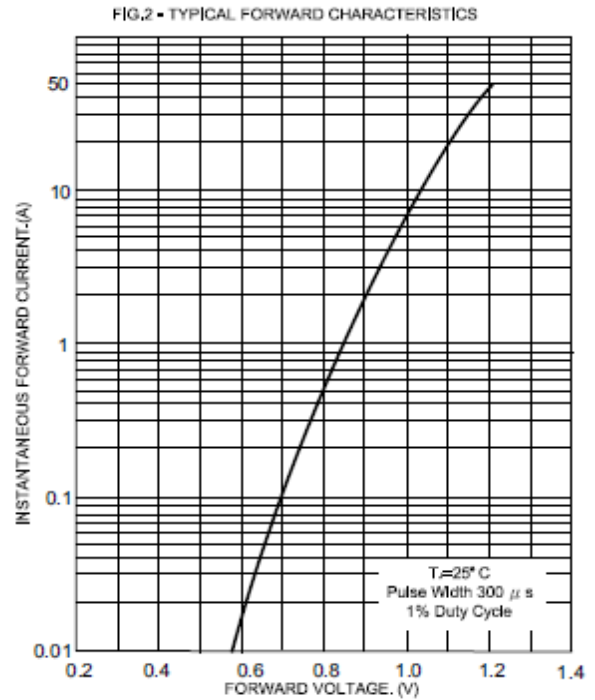
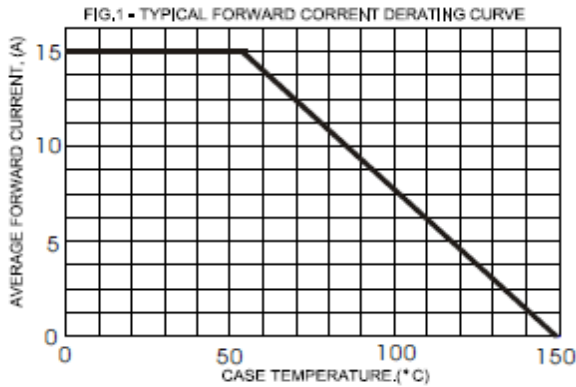
| Parameter | Symbol | Conditions | KBPC1506T/W | KBPC1508T/W | KBPC1510T/W | Unit |
|-----------------------------------------------------------------|-----------|-----------------------------------------------------------------------|-------------|-------------|-------------|---------------|
| Maximum average forward rectified current | I_O | $T_c = 55\text{ }^\circ\text{C}$ | 15 | 15 | 15 | A |
| Peak forward surge current | I_{FSM} | 8.3 ms half sine-wave | 300 | 300 | 300 | A |
| Maximum instantaneous forward voltage per leg | V_F | $I_F = 7.5\text{ A}$ | 1.1 | 1.1 | 1.1 | V |
| Maximum DC reverse current at rated DC blocking voltage per leg | I_R | $T_c = 25\text{ }^\circ\text{C}$ $T_c = 100\text{ }^\circ\text{C}$ | 5 500 | 5 500 | 5 500 | μA |
| Typical junction capacitance ¹ | C_j | | 300 | 300 | 300 | pF |

Thermal characteristics

| | | | | | | |
|-----------------------------------------|-----------------|--|-----|-----|-----|--------------------|
| Typical thermal resistance ² | $R_{\theta JC}$ | | 2.3 | 2.3 | 2.3 | $^\circ\text{C/W}$ |
|-----------------------------------------|-----------------|--|-----|-----|-----|--------------------|

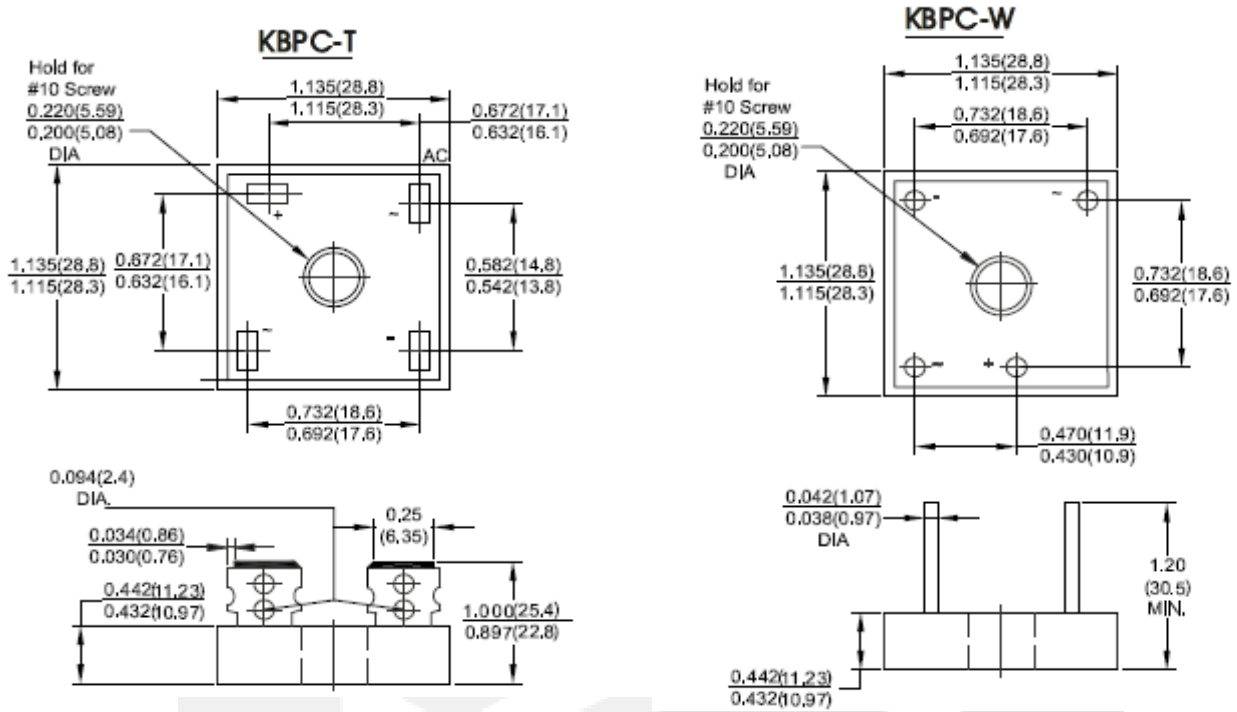
¹ - Measured at 1 MHz and applied reverse voltage of 4.0 V D.C.

² - Device mounted on 300 mm x 300 mm x 1.6 mm Cu plate heatsink

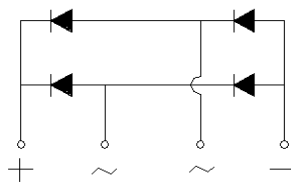


Package dimensions and terminal configuration

Product is marked with part number and terminal configuration.



Dimensions in inches and (millimeters)



Mouser Electronics

Authorized Distributor

Click to View Pricing, Inventory, Delivery & Lifecycle Information:

[GeneSiC Semiconductor:](#)

[KBPC1506W](#)