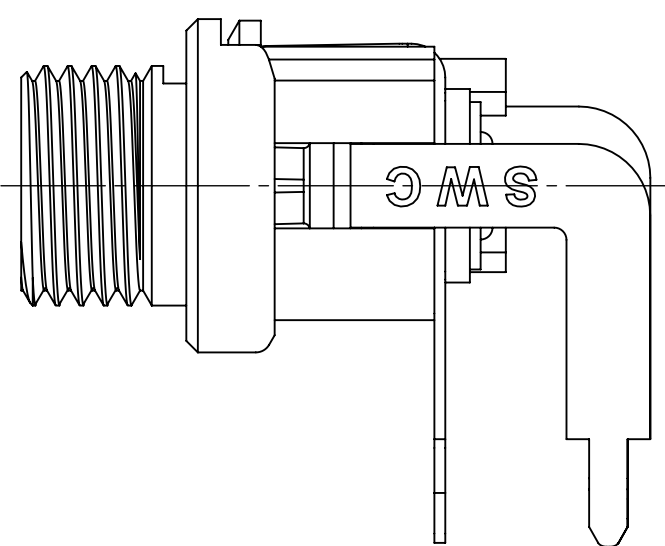
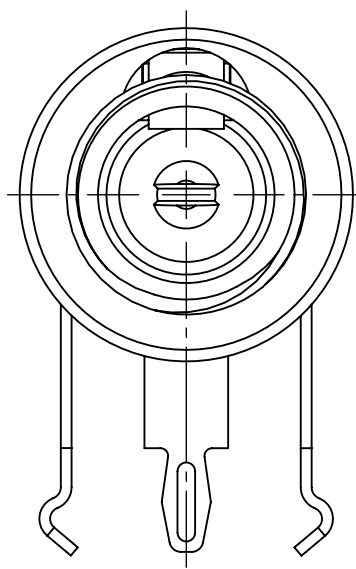


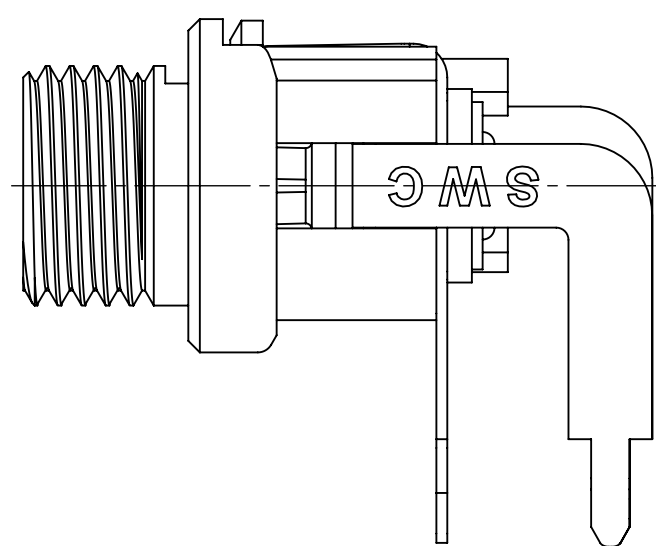
712RA
STANDARD
Ø 0.10 [2.5mm]
CENTER PIN REF



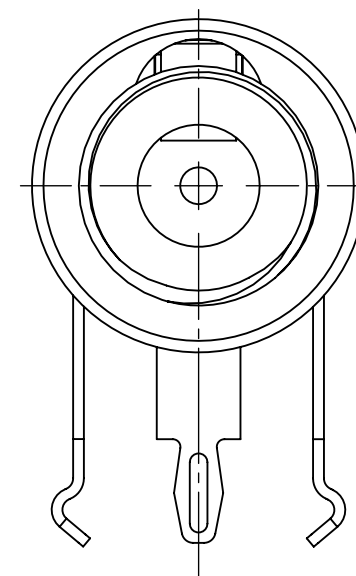
712RAH
HIGH TEMPERATURE
Ø 0.10 [2.5mm]
CENTER PIN REF



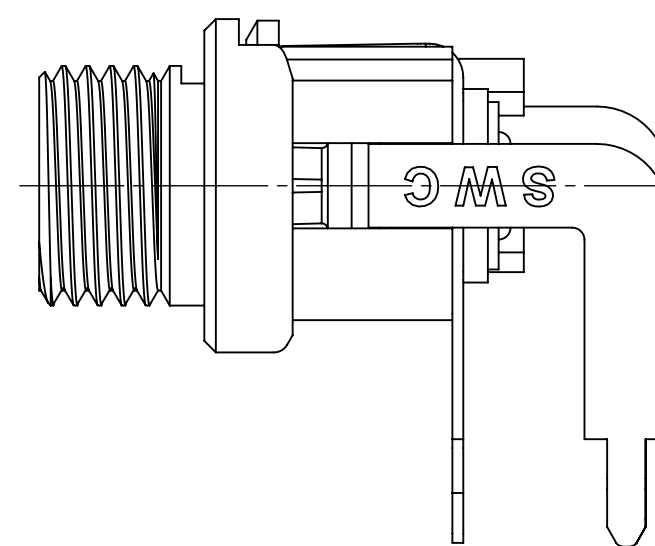
722RA
STANDARD
Ø 0.080 [2.0mm]
CENTER PIN REF



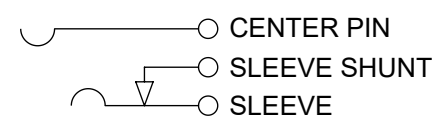
722RAH
HIGH TEMPERATURE
Ø 0.080 [2.0mm]
CENTER PIN REF



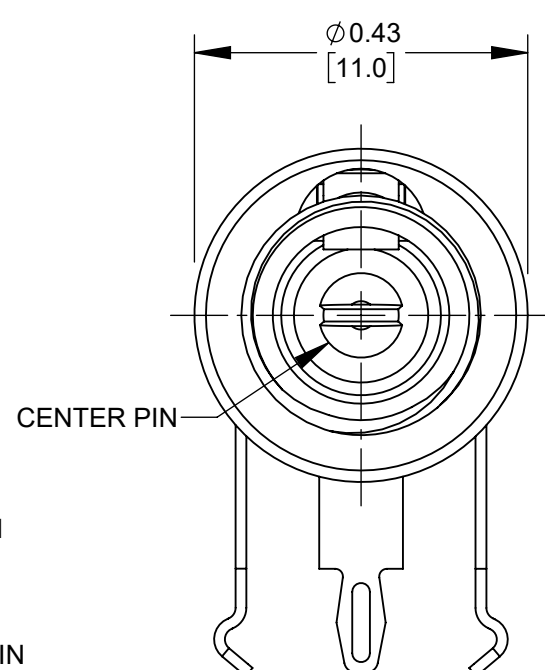
732RA
STANDARD
Ø 0.05 [1.3mm]
CENTER PIN REF



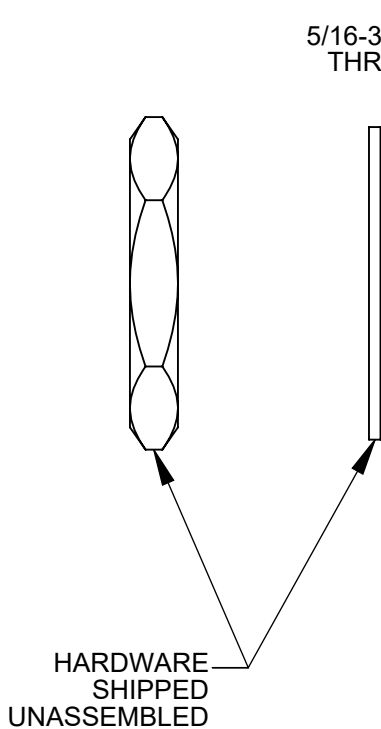
732RAH
HIGH TEMPERATURE
Ø 0.05 [1.3mm]
CENTER PIN REF



SCHEMATIC

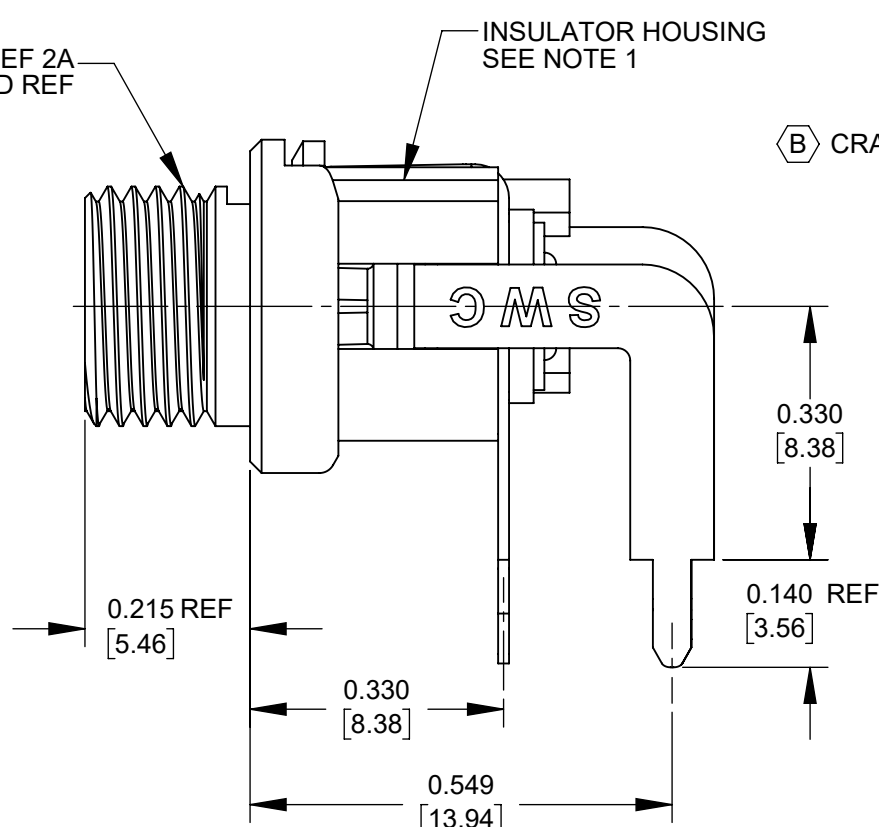


CENTER PIN



HARDWARE SHIPPED UNASSEMBLED

5/16-32 NEF 2A
THREAD REF



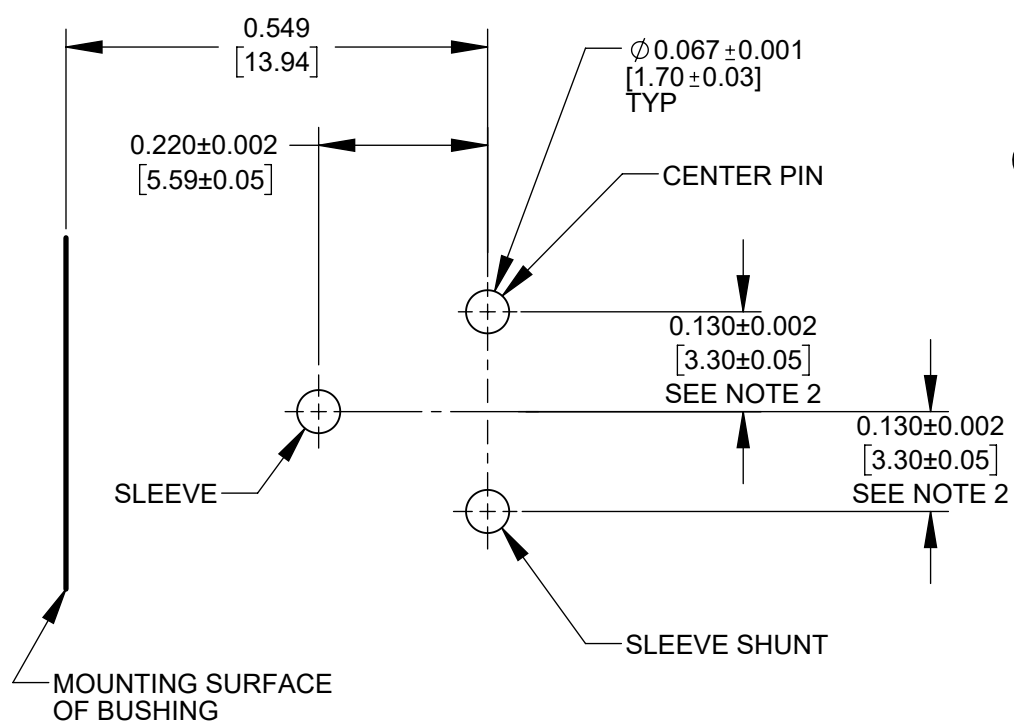
INSULATOR HOUSING
SEE NOTE 1

ⓑ CRACKS IN CENTER PIN ROLL OVER AREA ARE ACCEPTABLE

SLEEVE SHUNT TERMINAL

SLEEVE TERMINAL

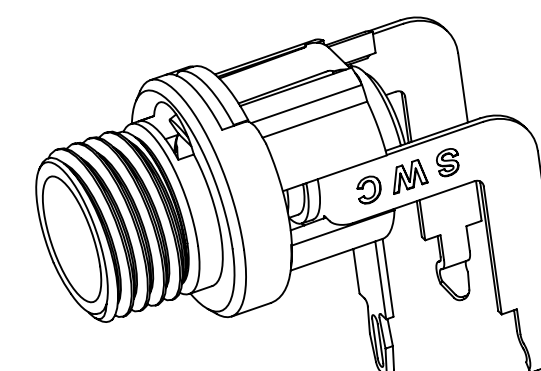
CENTER PIN TERMINAL



RECOMMENDED PANEL LAYOUT
(COMPONENT SIDE)

NOTES:

- MATERIALS:
BUSHING - COPPER ALLOY, NICKEL PLATED
INSULATOR HOUSING -
THERMOPLASTIC BLACK (STANDARD RA SERIES)
THERMOPLASTIC WHITE (HIGH TEMPERATURE RAH SERIES)
PIN, SPRING AND TERMINALS - COPPER ALLOY, SILVER PLATED
INSULATORS - PHENOLIC
HEX NUT - COPPER ALLOY, NICKEL PLATED
FLAT WASHER - STEEL, NICKEL PLATED
- FOR HAND INSERTION USE 0.130 [3.30] SPACING.
FOR AUTOMATED INSERTION USE 0.135 [3.43] SPACING.
- RA SERIES ARE RATED FOR 65°C MAX OPERATING TEMPERATURE
RAH SERIES ARE RATED FOR 85°C MAX OPERATING TEMPERATURE
- ⓑ IT IS RECOMMENDED THAT THE JACK MOUNTING NUT BE TIGHTENED SNUG BY HAND BEFORE APPLYING A FINAL TIGHTENING TORQUE OF 8-10 LB-IN USING HAND TOOLS ONLY. POWER DRIVER OR IMPACT DRIVERS ARE NOT RECOMMENDED.
- THE PRODUCTS IN THIS SERIES ARE RoHS COMPLIANT.



CUSTOMER DRAWING

UNLESS OTHERWISE SPECIFIED					THIS DRAWING DESCRIBES A DESIGN CONSIDERED PROPRIETARY IN NATURE, DEVELOPED AND MANUFACTURED BY SWITCHCRAFT INC. AND IS RELEASED ON A CONFIDENTIAL BASIS FOR IDENTIFICATION PURPOSES ONLY.				
1. ALL DIMENSIONS IN INCHES [mm]					SIZE	WIDTH	MULT	LBS/M	TEMPER
- TWO PLACE DECIMALS ±0.02 [0.5]					FINISH SPEC No.		MATERIAL SPEC No.		
- THREE PLACE DECIMALS ±0.005 [0.13]					FIRST USED ON		SCALE		
B	28397	06/11/21	PC	TJK	DATE DRAWN		BY	CHKD	APVD
A	27118	3/19/13	TJK	TJK	1/29/12	AB	AB	TJK	TJK
REV					ECO NUMBER		DATE	BY	APVD
REVISIONS					DO NOT SCALE DRAWING				
RIGHT ANGLE POWER JACK					PART No. 7_RA SERIES 7_RAH SERIES				
SHEET 1 OF 1					REV B				