

IP68 SEALED ETHERNET SOCKET

RPBE, RPCE SERIES



RPBE
Mates with:
RCE

RPBE

NO. OF PORTS

LEAD STYLE

PLATING

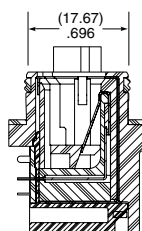
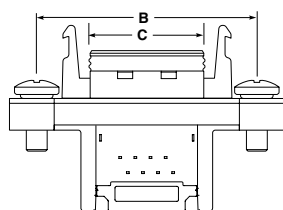
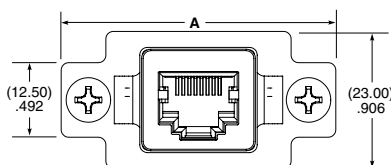
-01, -02

-01
= Right-angle

-E
= 50 μ" (1.27 μm) Gold on contact,
Flash Gold on tail

SPECIFICATIONS

Insulator Material:
Black Liquid Crystal Polymer
Contact:
Phosphor Bronze
Operating Temp Range:
-40 °C to +75 °C
Seal:
Rubber
Screw:
Stainless Steel
Nut:
Stainless Steel
Sealing Washer:
Rubber



NO. OF PORTS	A	B	C
-01	(46.10) 1.815	(36.95) 1.455	(19.72) .776
-02	(67.10) 2.642	(57.95) 2.281	(40.72) 1.603

DUST CAPS

- 01 = DCA-RPBE-01-01-P (Push-On/No Latch)
- 01 = DCA-RPBE-01-01-L (Latching)
- 02 = DCA-RPBE-02-01-L (Latching)

RPCE
Mates with:
RCE

RPCE

01

PLATING

CABLE LENGTH

END OPTION

C5E

-E
= 50 μ" (1.27 μm)
Gold on contact,
Nickel on shell

-00.25
= (0.25 m) 9.84"

-D
= Double Ended

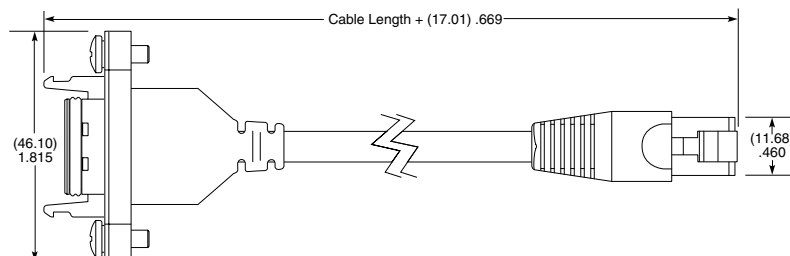
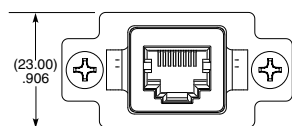
-00.50
= (0.50 m) 19.69"

Standard lengths

-BC
= Blunt Cut

SPECIFICATIONS

Insulator Material:
Glass Filled Thermoplastic
Contact:
Phosphor Bronze
Shield:
Phosphor Bronze
Operating Temp Range:
-40 °C to +75 °C
Overmold:
Rite Flex 640F
Seal:
Rubber
Screw:
Stainless Steel
Nut:
Stainless Steel
Sealing Washer:
Rubber
Wire:
24 AWG



Note:
Some lengths, styles and options are non-standard, non-returnable

Mouser Electronics

Authorized Distributor

Click to View Pricing, Inventory, Delivery & Lifecycle Information:

Samtec:

[RPCE-01-E-00.17-D-C5E](#) [RPCE-01-E-00.25-D-C5E](#) [RPCE-01-E-00.50-BC-C5E](#) [RPCE-01-E-00.50-D-C5E](#) [RPCE-01-E-00.25-BC-C5E](#) [RPCE-01-E-00.30-D-C5E](#) [RPCE-01-E-09.00-BC-C5E](#) [RPCE-01-E-06.00-D-C5E](#) [RPCE-01-E-02.00-D-C5E](#) [RPCE-01-E-00.61-D-C5E](#) [RPCE-01-E-02.00-BC-C5E](#) [RPCE-01-E-00.31-BC-C5E](#) [RPCE-01-E-00.35-D-C5E](#) [RPCE-01-E-01.00-BC-C5E](#) [RPCE-01-E-12.00-BC-C5E](#) [RPCE-01-E-30.00-D-C5E](#) [RPCE-01-E-00.23-BC-C5E](#) [RPCE-01-E-05.00-BC-C5E](#) [RPCE-01-E-10.00-BC-C5E](#) [RPCE-01-E-00.32-BC-C5E](#) [RPCE-01-E-01.22-D-C5E](#) [RPCE-01-E-30.00-BC-C5E](#) [RPCE-01-E-10.00-D-C5E](#) [RPCE-01-E-00.75-D-C5E](#) [RPCE-01-E-00.45-D-C5E](#) [RPCE-01-E-01.22-BC-C5E](#) [RPCE-01-E-00.40-D-C5E](#) [RPCE-01-E-01.50-D-C5E](#) [RPCE-01-E-01.52-D-C5E](#) [RPCE-01-E-01.00-D-C5E](#) [RPCE-01-E-03.05-D-C5E](#) [RPCE-01-E-00.16-D-C5E](#) [RPCE-01-E-00.41-D-C5E](#) [RPCE-01-E-00.58-D-C5E](#) [RPCE-01-E-05.00-D-C5E](#) [RPCE-01-E-02.03-D-C5E](#) [RPCE-01-E-01.25-D-C5E](#) [RPCE-01-E-00.63-BC-C5E](#) [RPCE-01-E-00.70-D-C5E](#) [RPCE-01-E-00.41-BC-C5E](#) [RPCE-01-E-09.15-D-C5E](#) [RPCE-01-E-01.50-BC-C5E](#) [RPCE-01-E-01.80-D-C5E](#) [RPCE-01-E-06.10-D-C5E](#) [RPCE-01-E-06.25-D-C5E](#) [RPCE-01-E-00.70-BC-C5E](#) [RPCE-01-E-00.94-D-C5E](#) [RPCE-01-E-02.13-D-C5E](#) [RPCE-01-E-00.17-BC-C5E](#) [RPCE-01-E-00.31-D-C5E](#) [RPCE-01-E-00.36-D-C5E](#) [RPCE-01-E-00.47-D-C5E](#) [RPCE-01-E-00.46-D-C5E](#) [RPCE-01-E-03.50-D-C5E](#) [RPCE-01-E-00.65-D-C5E](#) [RPCE-01-E-00.79-D-C5E](#) [RPCE-01-E-00.65-BC-C5E](#) [RPCE-01-E-00.44-D-C5E](#) [RPCE-01-E-37.40-D-C5E](#) [RPCE-01-E-00.38-D-C5E](#) [RPCE-01-E-00.95-D-C5E](#) [RPCE-01-E-00.40-BC-C5E](#) [RPCE-01-E-00.81-D-C5E](#) [RPCE-01-E-00.76-D-C5E](#) [RPCE-01-E-00.38-BC-C5E](#) [RPCE-01-E-03.00-BC-C5E](#) [RPCE-01-E-00.30-BC-C5E](#) [RPCE-01-E-00.55-D-C5E](#) [RPCE-01-E-20.00-BC-C5E](#) [RPCE-01-E-00.56-D-C5E](#) [RPCE-01-E-02.50-D-C5E](#) [RPCE-01-E-00.54-D-C5E](#) [RPCE-01-E-00.52-D-C5E](#) [RPCE-01-E-00.60-D-C5E](#) [RPCE-01-E-22.00-D-C5E](#) [RPCE-01-E-00.80-D-C5E](#)