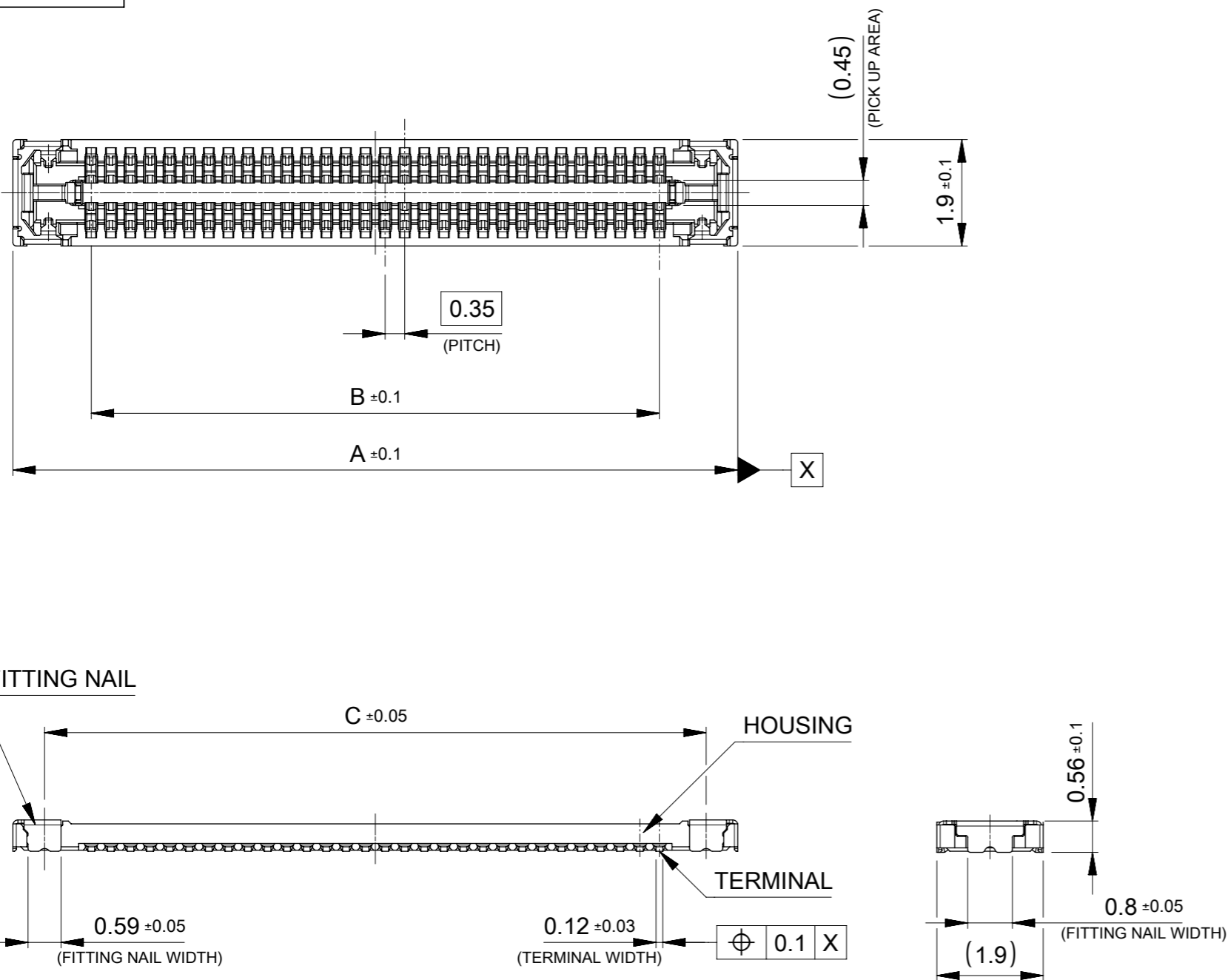


GENERAL DRAWING

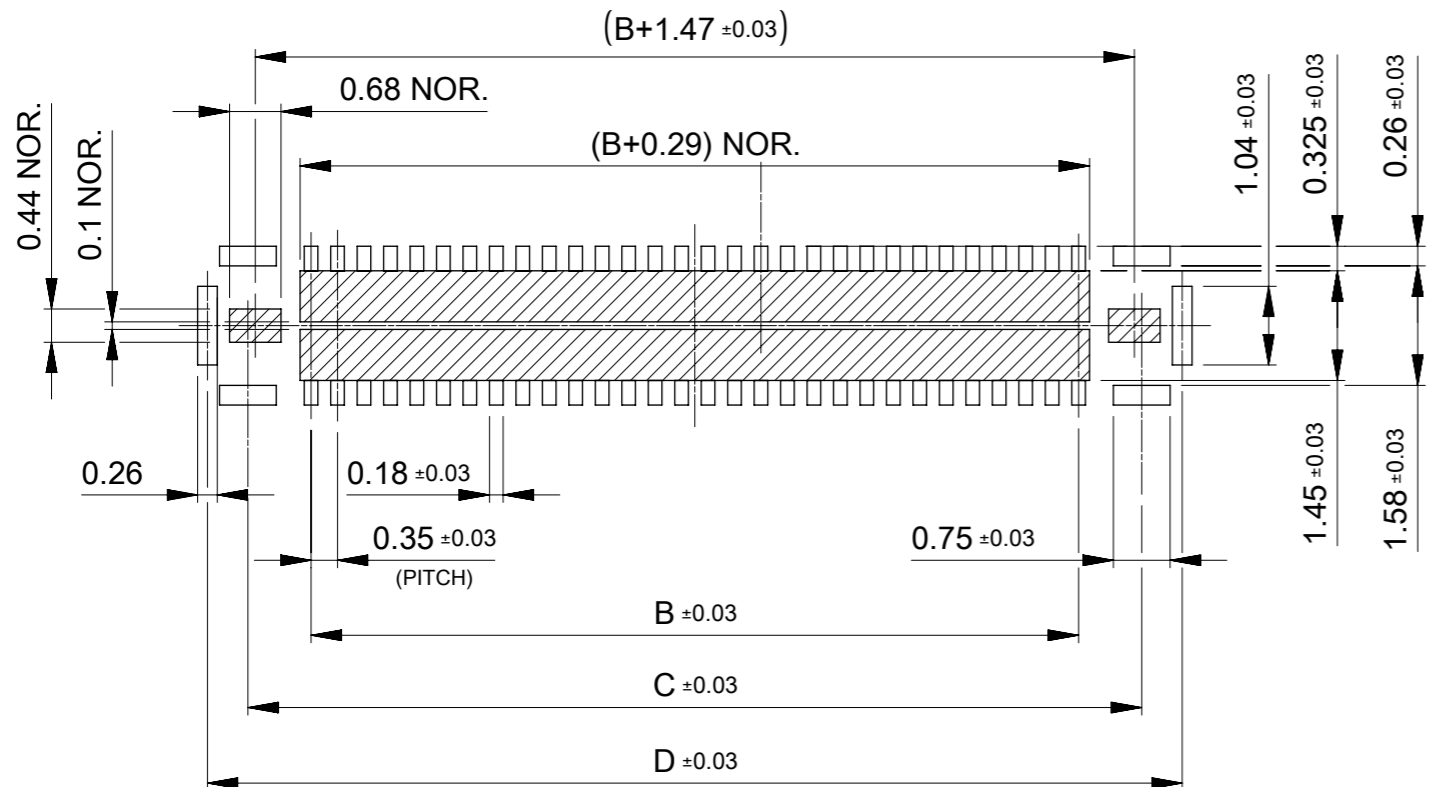


NOTES


- MATERIAL**
 HOUSING : LIQUID CRYSTAL POLIMER UL94V-0 (COLOR : BLACK)
 TERMINAL : COPPER ALLOY
 FITTING NAIL : COPPER ALLOY
- PLATING**
TERMINAL :
 CONTACT AREA : GOLD PLATING(0.1µm MINIMUM)
 SOLDER TAIL AREA : GOLD PLATING(0.05µm MINIMUM)
 UNDER PLATING : NICKEL OVERALL(1.0µm MINIMUM)
 * DIVIED INTO PARTS THE GOLD PLATING OF THE CONTACT AND THE TAIL PART BY THE NICKEL PLATING.
- FITTING NAIL :**
 CONTACT AREA : GOLD PLATING(0.1µm MINIMUM)
 SOLDER TAIL AREA : GOLD PLATING(0.05µm MINIMUM)
 UNDER PLATING : NICKEL OVERALL(1.0µm MINIMUM)
 * DIVIED INTO PARTS THE GOLD PLATING OF THE CONTACT AND THE TAIL PART BY THE NICKEL PLATING.
- MATE WITH : 216701******
- COPLANARITY :** SHALL BE 0.08MAX. ON BOTH OF TERMINAL AND NAIL.
 AND 0.1 MAX AFTER REFLOW
- PROHIBITED AREA OF PATTERN WIRING AND SOLDER.**
 (FOR EACH AREA, THE WIRING THAT TOUCHES ON THE SOLDER CAN BE ATTACHED, THEN COVERED WITH A FILM TO KEEP SOLDER OUT)

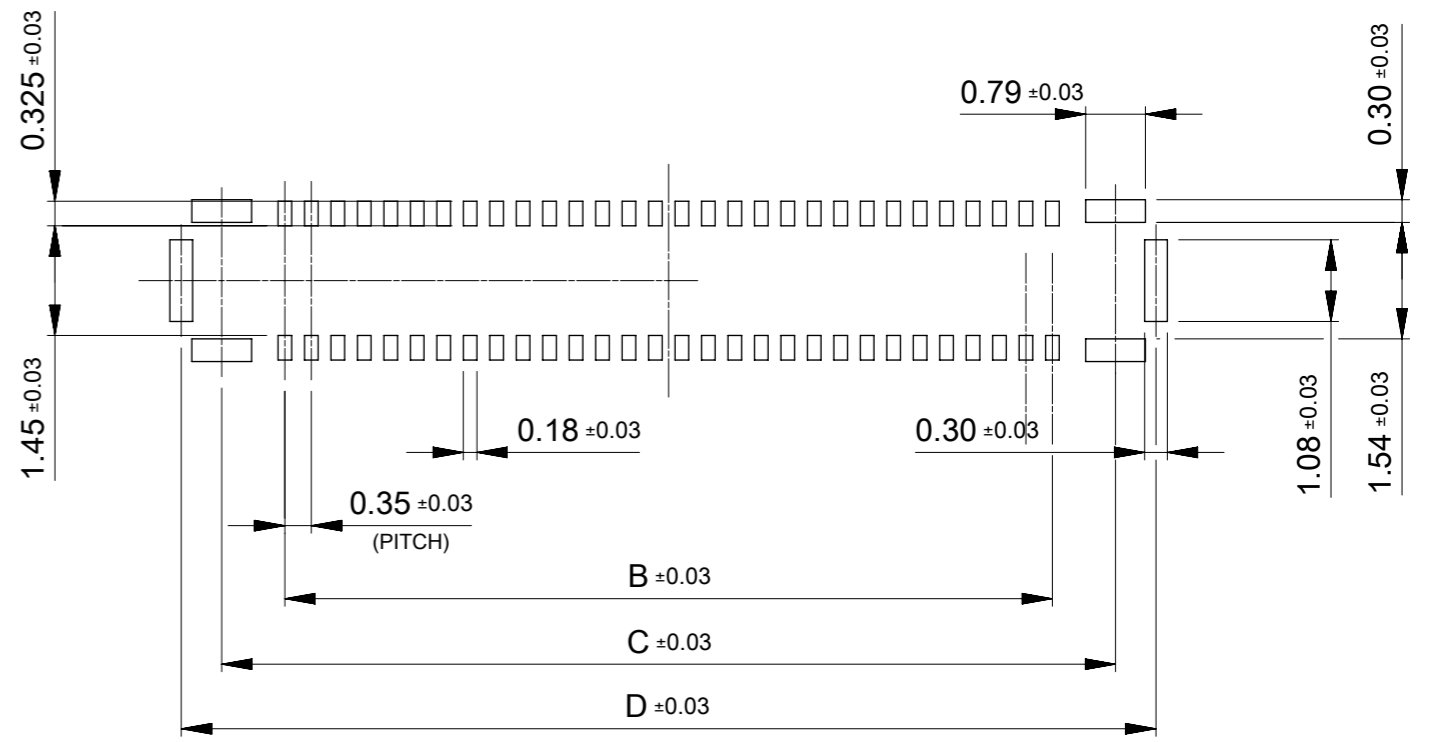
12.89	11.82	10.15	12.95	2167000609	---	O	60
11.84	10.77	9.10	11.90	2167000549	O	---	54
11.14	10.07	8.40	11.20	2167000509	O	---	50
9.39	8.32	6.65	9.45	2167000409	O	---	40
7.64	6.57	4.90	7.70	2167000309	---	O	30
6.59	5.52	3.85	6.65	2167000249	---	O	24
5.89	4.82	3.15	5.95	2167000209	O	---	20
4.14	3.07	1.40	4.20	2167000109	---	O	10
D	C	B	A	EMBOSSSED TAPE PACKAGE	HIGH VOL. TOOL	LOW VOL. TOOL	Ckts
				ORDER No.	SAMPLE PREPARATION		
				O : TOOLED □ : WORK PROCESS --- : TOOLING TO BE CONFIRMED			
CONNECTOR SERIES No. : 216700****							

FUNCTIONAL SYMBOLS	THIS DRAWING CONTAINS INFORMATION THAT IS PROPRIETARY TO MOLEX ELECTRONIC TECHNOLOGIES, LLC AND SHOULD NOT BE USED WITHOUT WRITTEN PERMISSION		CURRENT REV DESC:		molex		
	mm	10:1					
DIVISIONAL SYMBOLS	GENERAL TOLERANCES (UNLESS SPECIFIED)		EC NO: 746141		PRODUCT CUSTOMER DRAWING		
	ANGULAR TOL ± 1.0°		DRWN: DWLEE02 2023/04/14				
4 PLACES ± 0.05		CHK'D: JHCHANG 2023/04/14		DOCUMENT NUMBER	DOC TYPE	DOC PART	REVISION
3 PLACES ± 0.05		APPR: JBJIN 2023/04/17					
2 PLACES ± 0.05		INITIAL REVISION:					
1 PLACE ± 0.1		DRWN: JHCHANG 2023/04/13					
0 PLACES ± 0.2		APPR: JBJIN 2023/04/17					
DRAFT WHERE APPLICABLE MUST REMAIN WITHIN DIMENSIONS		THIRD ANGLE PROJECTION	DRAWING	SERIES	MATERIAL NUMBER	CUSTOMER	SHEET NUMBER
			A3-SIZE	216700	SEE SHEET1	GENERAL	1 OF 2



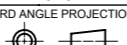
RECOMMENDED P.C.BOARD PATTERN LAYOUT
(FOR REFERENCE)

 SOLDER PROHIBITED AREA.
WHEN WIRING IS LOCATED,
THE WIRING MUST BE MASKED BY COVER LAY OR RESIST FILM.

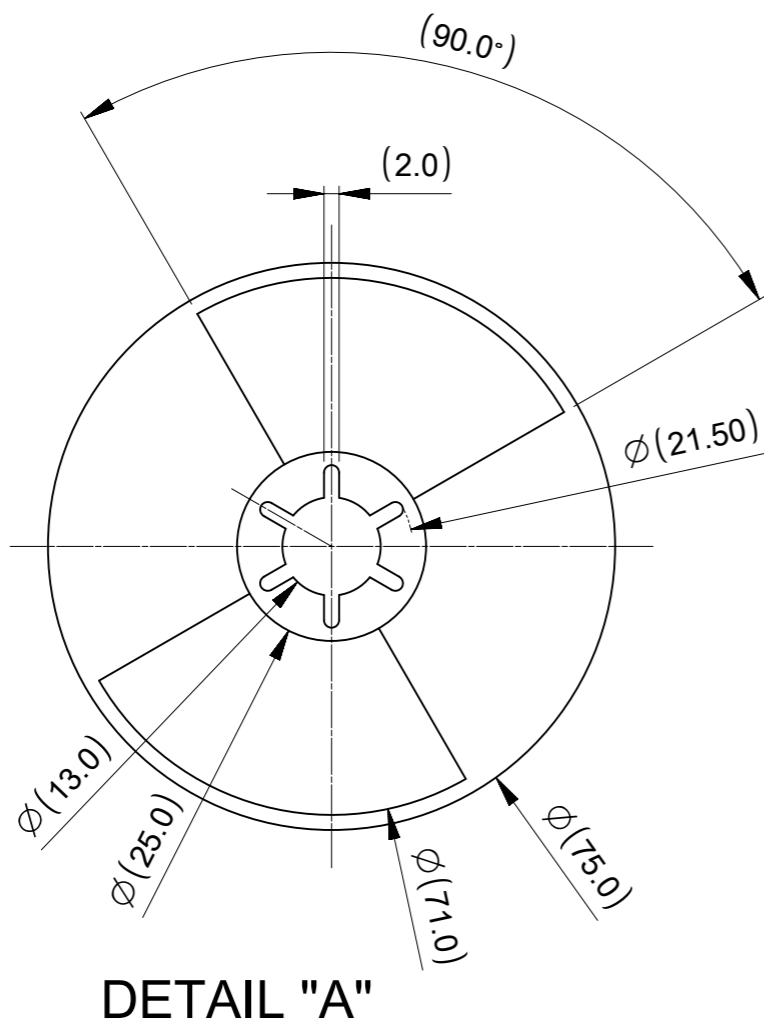
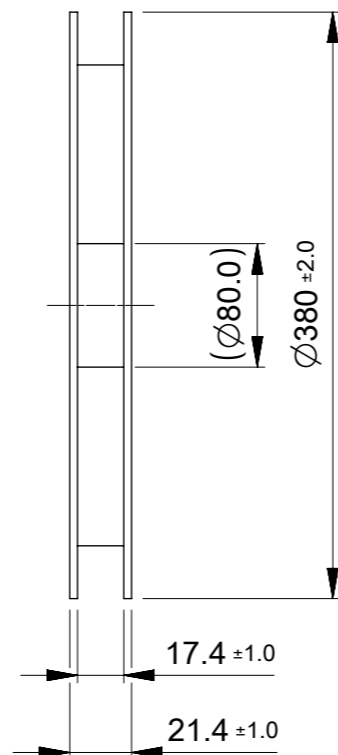
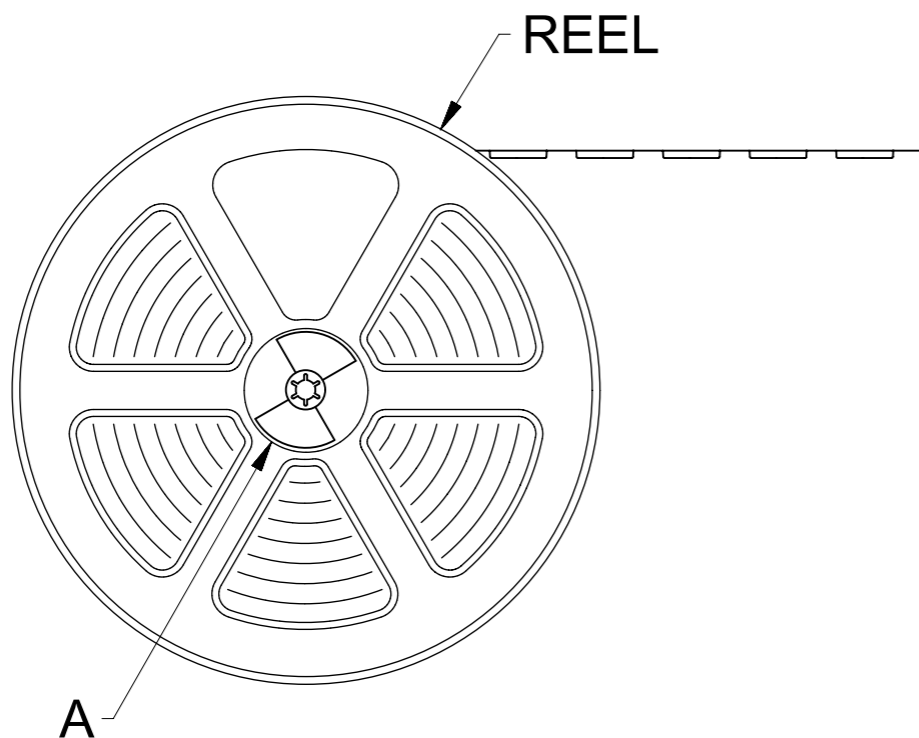


RECOMMENDED METAL MASK LAYOUT
(FOR REFERENCE)

RECOMMENDED THICKNESS : 0.08mm
RECOMMENDED APERTURE DIMENSION IS JUST SAME AS SHOWN FIGURE ABOVE.
FOR THIS DIMENSION, APERTURE RATIO ARE SIGNAL TERMINAL 100% AND
FITTING NAIL ALL 120%.

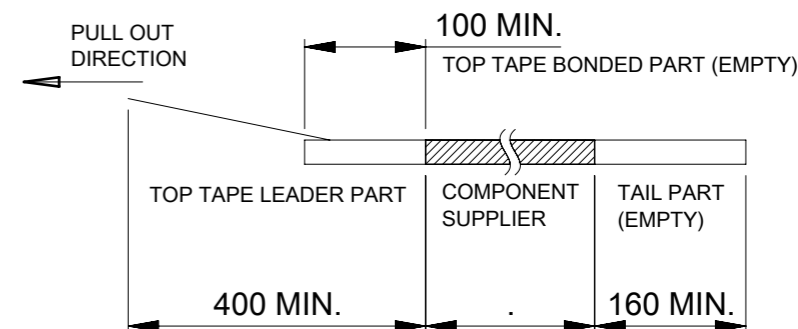
FUNCTIONAL SYMBOLS $\nabla_A = 0$ $\nabla_E = 0$ $\nabla_V = 0$	THIS DRAWING CONTAINS INFORMATION THAT IS PROPRIETARY TO MOLEX ELECTRONIC TECHNOLOGIES, LLC AND SHOULD NOT BE USED WITHOUT WRITTEN PERMISSION	SCALE	CURRENT REV DESC:			
	DIMENSION UNITS	10:1				
	GENERAL TOLERANCES (UNLESS SPECIFIED)					
	ANGULAR TOL ± 1.0°					
DIVISIONAL SYMBOLS 4 PLACES ± 0.05 3 PLACES ± 0.05 2 PLACES ± 0.05 1 PLACE ± 0.1 0 PLACES ± 0.2	EC NO: 746141	2023/04/14	molex 0.35 BB H=0.6 ACB6 PLUS REC ASSY			
	DRWN: DWLEE02	2023/04/14				
	CHK'D: JHCHANG	2023/04/17	PRODUCT CUSTOMER DRAWING			
	APPR: JBJIN	2023/04/17	DOCUMENT NUMBER			
INITIAL REVISION:		2023/04/13	2167000000-SD	PSD	002	A
DRWN: JHCHANG		2023/04/17	DOC TYPE DOC PART REVISION			
APPR: JBJIN			SHEET NUMBER			
DRAFT WHERE APPLICABLE MUST REMAIN WITHIN DIMENSIONS	THIRD ANGLE PROJECTION	DRAWING	SERIES	MATERIAL NUMBER	CUSTOMER	
		A3-SIZE	216700	SEE SHEET1	GENERAL	2 OF 2

⇒ PULL OUT DIRECTION



NOTES

1. RE DETAILED DIMENSION, SEE PRODUCT DRAWING.
2. NUMBER OF CONNECTORS : 20,000PCS/REEL
3. LEAD TAPE LENGTH :



4. PEEL OFF FORCE OF THE TOP TAPE IS DEFINDED BY IEC 60286-3.
5. MATERIAL
 - CARRIER TAPE : POLYSTYRENE OR PET
 - TOP TAPE : PET, OTHER
 - REEL : POLYSTYRENE(PS) [RECYCLE MATERIAL CONTAINED]

FUNCTIONAL SYMBOLS	THIS DRAWING CONTAINS INFORMATION THAT IS PROPRIETARY TO MOLEX ELECTRONIC TECHNOLOGIES, LLC AND SHOULD NOT BE USED WITHOUT WRITTEN PERMISSION		CURRENT REV DESC:		molex	
	▽A = 0	mm	SCALE 1:1			
▽E = 0	GENERAL TOLERANCES (UNLESS SPECIFIED)				0.35 BB H=0.6 ACB6 PLUS REC ASSY PKG	
▽F = 0	ANGULAR TOL ± 1.0°					
DIVISIONAL SYMBOLS	4 PLACES	± 0.05	EC NO: 746141	2023/04/14	PRODUCT CUSTOMER DRAWING	
	3 PLACES	± 0.05	DRWN: DWLEE02	2023/04/14		
	2 PLACES	± 0.05	CHK'D: JHCHANG	2023/04/17	DOCUMENT NUMBER: 2167000001-SD	
	1 PLACE	± 0.1	APPR: JBJIN	2023/04/17		DOC TYPE: PSD
	0 PLACES	± 0.2	INITIAL REVISION:			
DRAFT WHERE APPLICABLE MUST REMAIN WITHIN DIMENSIONS		DRWN: JHCHANG	2023/04/13	REVISION: A		
THIRD ANGLE PROJECTION		APPR: JBJIN	2023/04/17			
DRAWING		SERIES	MATERIAL NUMBER		CUSTOMER	SHEET NUMBER
A3-SIZE		216700	SEE SHEET2	GENERAL	1 OF 2	

PULL OUT DIRECTION →

EMBOSS CARRIER TAPE

TOP TAPE

H ±0.10

0.30 ±0.05

(0.73)

(1.13)

SECTION A-A

0.73 ±0.05

2.10 ±0.05

SECTION C-C

∅ 1.55 ±0.05

4.00 ±0.10

2.00 ±0.10

1.75 ±0.10

J ±0.10

G ±0.10

13.08	11.50	24.00	2167000609	---	O	60
12.03			2167000549	O	---	54
11.33			2167000509	O	---	50
9.58	9.25	16.00	2167000409	O	---	40
7.83			2167000309	---	O	30
6.78			2167000249	---	O	24
6.08			2167000209	O	---	20
4.33			2167000109	---	O	10
H	J	G	EMBOSSED TAPE PACKAGE	HIGH VOL. TOOL	LOW VOL. TOOL	Ckts
			ORDER No.	SAMPLE PREPARATION		
				O : TOOLED □ : WORK PROCESS --- : TOOLING TO BE CONFIRMED		
CONNECTOR SERIES No. : 216700****						

FUNCTIONAL SYMBOLS ∇ _A = 0 ∇ _E = 0 ∇ _V = 0	THIS DRAWING CONTAINS INFORMATION THAT IS PROPRIETARY TO MOLEX ELECTRONIC TECHNOLOGIES, LLC AND SHOULD NOT BE USED WITHOUT WRITTEN PERMISSION	SCALE 5:1	CURRENT REV DESC:		
	DIMENSION UNITS mm	GENERAL TOLERANCES (UNLESS SPECIFIED)	molex		
DIVISIONAL SYMBOLS	ANGULAR TOL ± 1.0°	0.35 BB H=0.6 ACB6 PLUS REC ASSY PKG			
4 PLACES ± 0.05	3 PLACES ± 0.05	EC NO: 746141	PRODUCT CUSTOMER DRAWING		
2 PLACES ± 0.05	1 PLACE ± 0.1	DRWN: DWLEE02	2023/04/14		
0 PLACES ± 0.2	DRAFT WHERE APPLICABLE MUST REMAIN WITHIN DIMENSIONS	CHK'D: JHCHANG	2023/04/14		
	THIRD ANGLE PROJECTION	APPR: JBJIN	2023/04/17		
	DRAWING	INITIAL REVISION:	DOCUMENT NUMBER	DOC TYPE	
	A3-SIZE	DRWN: JHCHANG	2167000001-SD	PSD	
	SERIES	APPR: JBJIN	001	REVISION	
	216700		A		
	MATERIAL NUMBER	CUSTOMER	SHEET NUMBER		
	SEE SHEET2	GENERAL	2 OF 2		