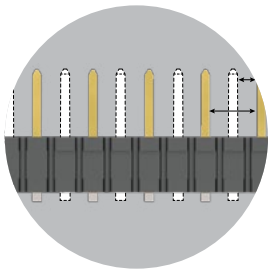


HIGH-POWER SYSTEMS

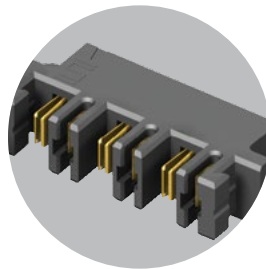
20-60 A
per blade

FEATURES & BENEFITS

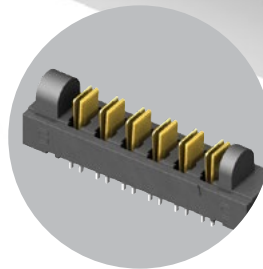
- Current Rating: 23 A - 58.7 A per power blade
- 3.81 mm, 5.00 mm and 6.35 mm pitch
- Dual blade contact system
- Power only or power/signal combinations available
- Right-angle and vertical orientations
- Rugged screw down and locking clip options
- Discrete wire cable assembly with 10-16 AWG wire
- "Hinged" for unique mating in any orientation from 0° to 90° and space confined applications



Selectively loading contacts achieves customer specific creepage and clearance requirements.



Hermaphroditic options available (samtec.com?MPPT)



Hinging options available (samtec.com?FMPT samtec.com?FMPS)

KEY SPECIFICATIONS

SERIES	PET/PES	PETC/PESC	MPT/MPS	MPTC/MPSC	UPT/UPS	FMPT/FMPS	UPPT	MPPT
PITCH	(6.35 mm) .250"	(6.35 mm) .250" (pwr) (2.54 mm) .100" (sig)	(5.00 mm) .1969"	(5.00 mm) .197" (pwr) (2.00 mm) .079" (sig)	(3.81 mm) .150"	(5.00 mm) .1969"	(3.81 mm) .150"	(5.00 mm) .1969"
CCC (1 PIN)*	58.7 A	31.4 A	28.8 A	28.8 A	23 A	26.7 A	21.4 A	23.3 A
CCC (2 PINS)*	48.5 A	28.0 A	24.7 A	24.7 A	18.6 A	22.9 A	19.8 A	20.5 A
CCC (3 PINS)*	41.1 A	24.4 A	24.1 A	24.1 A	17.5 A	19.1 A	17.1 A	19.4 A
CREEPAGE	(3.66 mm) .144"	(3.66 mm) .144"	(2.86 mm) .113"	(2.86 mm) .113"	(5.5 mm) .217"	(6.53 mm) .257"	(1.91 mm) .075"	(2.95 mm) .116"
CLEARANCE	(3.31 mm) .130"	(3.31 mm) .130"	(2.71 mm) .106"	(2.71 mm) .106"	(1.51 mm) .059"	(2.71 mm) .106"	(1.51 mm) .059"	(2.71 mm) .106"
VAC	725 VAC	Signal: 450 VAC Power: 650 VAC	575 VAC	250 VAC	438 VAC	525 VAC	425 VAC	600 VAC
VDC	1025 VDC	Signal: 636 VDC Power: 919 VDC	812 VDC	354 VDC	620 VDC	742 VDC	600 VDC	848 VDC
CYCLES	100	100	100	100	25	100	100	100

(5.00 mm) .1969" PITCH • 30 A DUAL BLADE/LEAF SYSTEMS

SERIES	POWER PINS	LEAD STYLE	TAIL LENGTH	PLATING OPTION	TAIL
MPT Terminal	-02, -03, -04,	-6.30 = (6.30 mm) 0.248" (MPT only)	-01 = Use with (1.60 mm) .062" Thick PCB -03 = Use with (2.36 mm) .093" Thick PCB	-L = 10 μ" (0.25 μm) Gold on contact, Matte Tin on tail -T = Matte Tin	(Required Callout) -V = Vertical
MPS Socket	-06, -08	-7.70 = (7.70 mm) 0.303" (MPS only)			

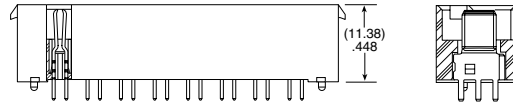
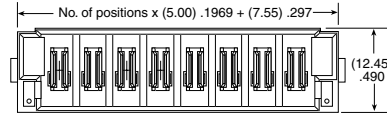
MPT

Board Mates:

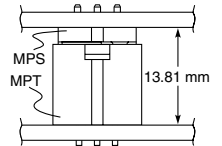
MPS

Cable Mates:

MPSS



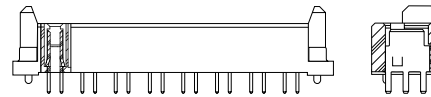
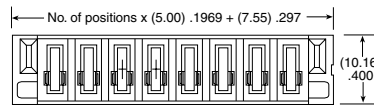
MATED HEIGHT



MPS

Board Mates:

MPT



View complete specifications at: samtec.com?MPT & samtec.com?MPS

SERIES	POWER PINS	01	TAIL LENGTH	PLATING OPTION	RA	SD
MPT Terminal	-02, -04, -06, -08		-01 = Use with (1.60 mm) .062" Thick PCB -03 = Use with (2.36 mm) .093" Thick PCB	-L = 10 μ" (0.25 μm) Gold on contact, Matte Tin on tail -T = Matte Tin		
MPS Socket						

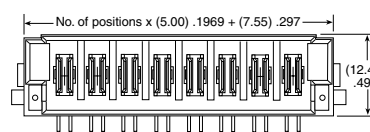
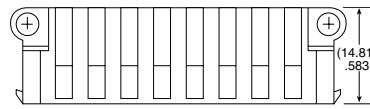
MPT-RA

Board Mates:

MPS

Cable Mates:

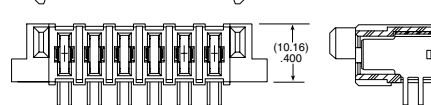
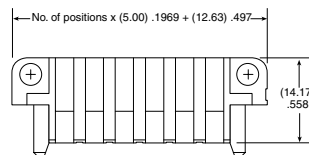
MPSS



MPS-RA

Board Mates:

MPT



Note:
Some lengths, styles and options are non-standard, non-returnable

View complete specifications at: samtec.com?MPT & samtec.com?MPS

Mouser Electronics

Authorized Distributor

Click to View Pricing, Inventory, Delivery & Lifecycle Information:

Samtec:

[MPS-08-7.70-01-L-V](#) [MPS-02-7.70-01-L-V](#) [MPS-06-7.70-03-L-V](#) [MPS-06-7.70-01-L-V](#) [MPS-04-7.70-03-L-V](#) [MPS-08-7.70-03-L-V](#) [MPS-03-7.70-01-L-V](#) [MPS-04-7.70-01-L-V](#) [MPS-02-7.70-01-T-V-LC](#) [MPS-08-7.70-01-L-V-LC](#) [MPS-06-7.70-01-T-V-LC](#) [MPS-08-7.70-01-T-V](#) [MPS-02-7.70-01-L-V-LC](#) [MPS-02-7.70-01-T-V](#) [MPS-08-7.70-01-T-V-LC](#) [MPS-06-7.70-01-L-V-LC](#) [MPS-04-7.70-01-L-V-LC](#) [MPS-04-7.70-01-T-V-LC](#) [MPS-06-7.70-01-T-V](#) [MPS-04-7.70-01-T-V](#) [MPS-02-7.70-03-T-V](#) [MPS-03-7.70-01-T-V](#) [MPS-02-7.70-03-L-V](#) [MPS-04-7.70-03-L-V-LC](#) [MPS-08-7.70-03-T-V](#) [MPS-08-7.70-03-L-V-LC](#) [MPS-08-7.70-03-T-V-LC](#) [MPS-04-7.70-03-T-V](#) [MPS-02-7.70-03-L-V-LC](#) [MPS-06-7.70-03-T-V](#) [MPS-06-7.70-03-L-V-LC](#) [MPS-03-7.70-03-L-V](#) [MPS-04-7.70-03-T-V-LC](#) [MPS-06-7.70-03-T-V-LC](#)