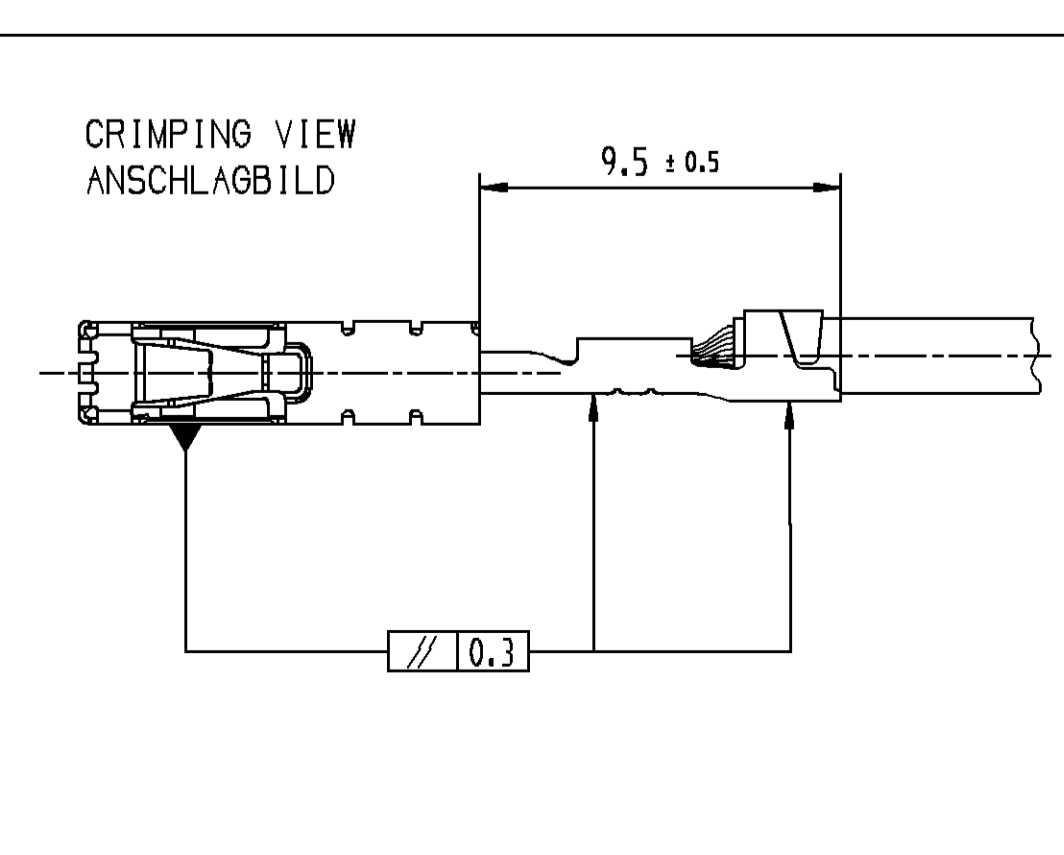
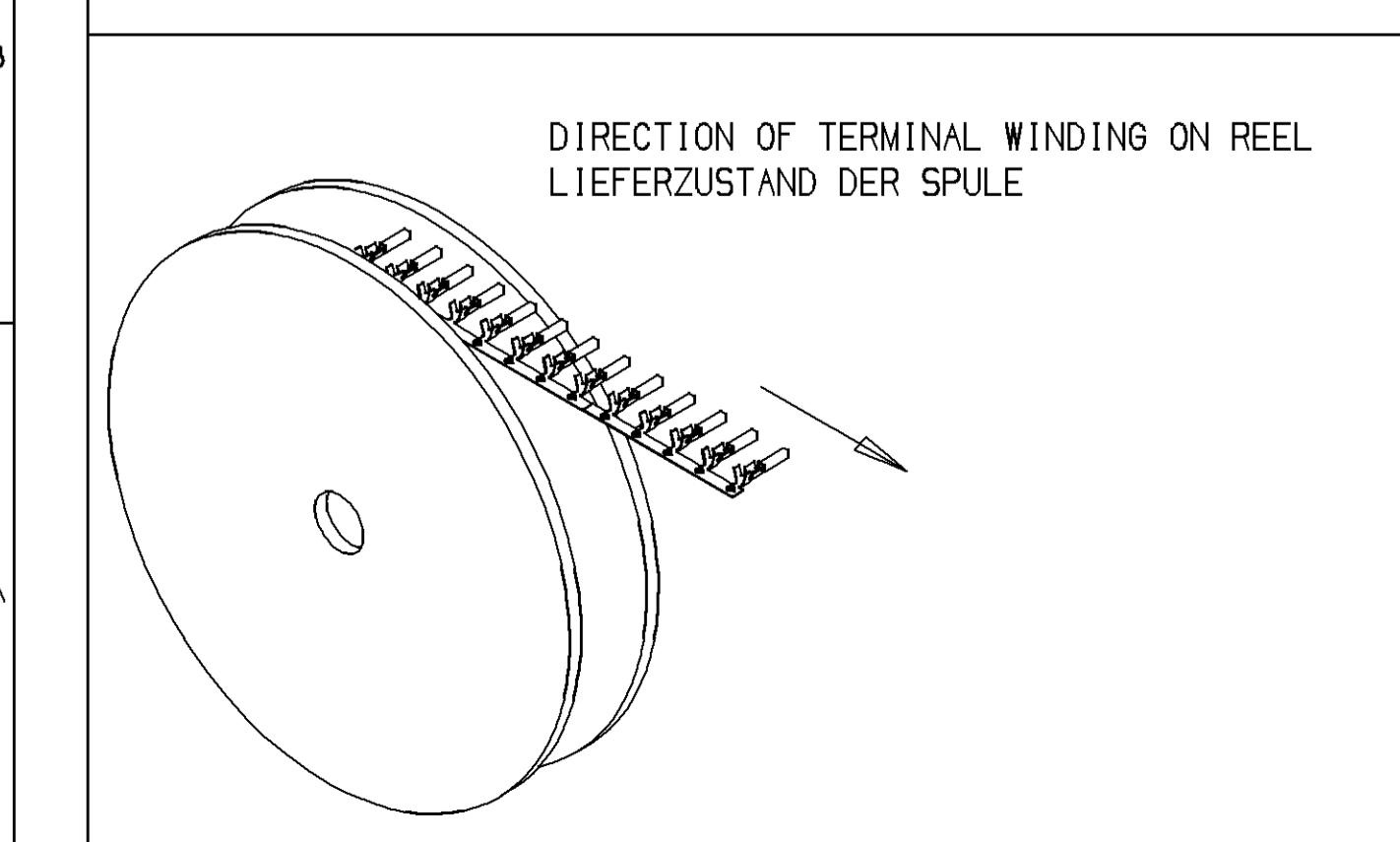
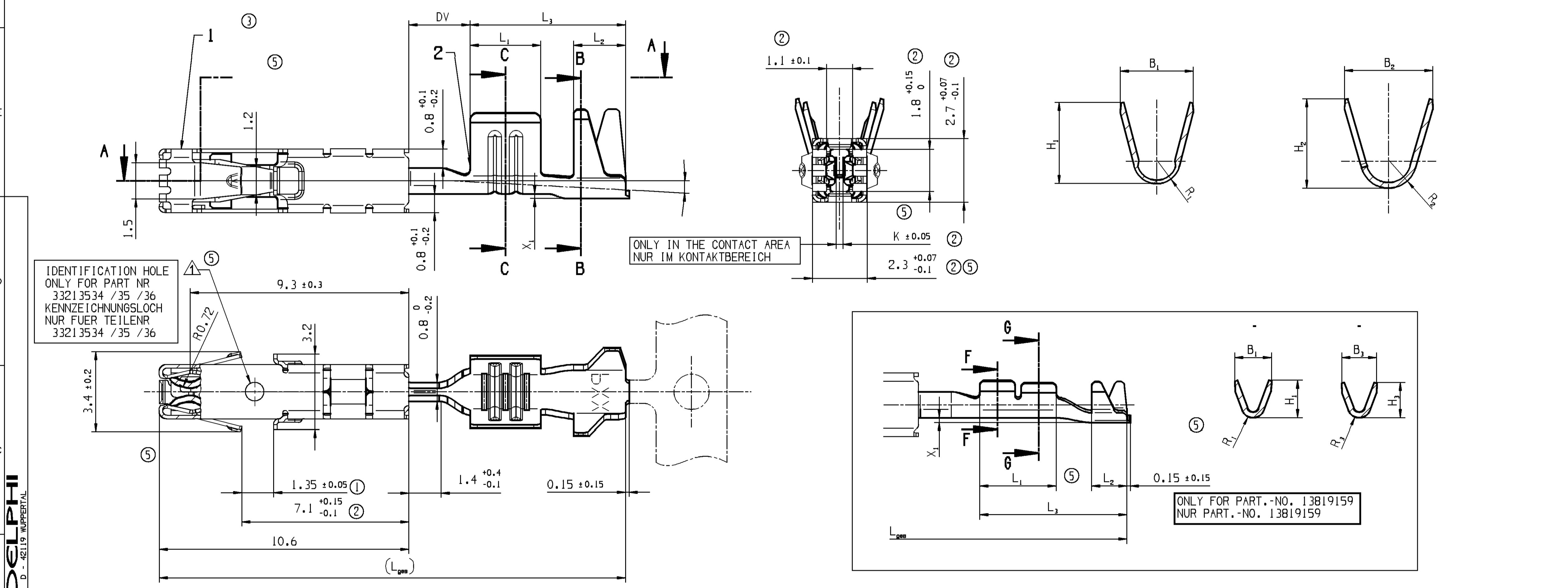


DV ± 0.4	X <sub>1</sub>	L <sub>open</sub>	K ± 0.05	L <sub>3</sub> ± 0.3	L <sub>2</sub> ± 0.2	L <sub>1</sub> ± 0.2	D <sub>1</sub>	C <sub>2</sub> ± 0.05	C <sub>1</sub> ± 0.05	R <sub>3</sub> ± 0.1	R <sub>2</sub> ± 0.1	R <sub>1</sub> ± 0.1	H <sub>3</sub> ± 0.2	H <sub>2</sub> ± 0.2	H <sub>1</sub> ± 0.2	B <sub>3</sub> ± 0.2	B <sub>2</sub> ± 0.2	B <sub>1</sub> ± 0.2	MAT THICKNESS BANDDÜCKE	SURFACE OBERFLÄCHE	MATERIAL WERKSTOFF	STRENGTH N/MM² FESTIGKEIT	CABLE-TYPE LTG.-TYP	CROSS SECTION QUERSCH.	CAVITY NORMKAMMER	VERSION AUSFÜHR.	POS.	SINGLE / EINZELTEIL PART-NO.	ASSEMBLY / ZUSAMMENBAU PART-NO.	PART-REV	DATE DATUM	ZONE	DWG STATUS REV N/P/CHG	REVISION HISTORY		DATE	NAME	CHECK	STCHK
																																		01	02				
2.6	0.2	19.8	0.3	6.6	2.2	3	.	9.0	7.5(2)	.	1.2	1.0	.	3.8	3.45	.	3.75	3.1	0.25±0.03	fSn3	CuFe2	530-570	.	1.0-1.5	.	UNSEALED	2	15432232	15432233	03	11JA06	H10	02	INITIAL RELEASE	200C02	WIRTH	CVASA	R.WIS.	
2.6	0.2	19.8	0.3	6.6	2.2	3	.	7.7	5.55(2)	.	1.15	0.85	.	3.3	2.6	.	3.1	2.4	0.25±0.03	fSn3	CuFe2	530-570	.	0.5-1.0	.	UNSEALED	2	15432234	15432235	03	11JA06	H10	04	7.5 WAS 7.8 7.5 WAR 7.8 5.55 WAS 5.8 5.55 WAR 5.8					
3.5	0.2	19.8	0.3	5.7	2.0	2.5	.	5.5	3.8	.	0.8	0.65	.	2.3	1.7	.	2.3	1.8	0.25±0.03	fSn3	CuFe2	530-570	.	0.22-0.35	.	UNSEALED	2	15432236	15432237	03	11JA06	H10	04	PART-NO. 15493009 AND 3007 ADDED PART-NO. 15493009 AND 3007 ZUBEUEBT PART-NO. 15493005 AND 3011 ADDED PART-NO. 15493005 UND 3011 ZUBEUEBT					
2.6	0.2	19.8	0.3	6.6	1.6	3	.	8.35	5.8	.	1.15	0.85	.	3.7	2.6	.	3.4	2.4	0.25±0.03	fSn3	CuFe2	530-570	.	0.35+0.35 / 0.5+0.5	.	UNSEALED	2	15432230	15432231	03	11JA06	H10	04	DIN 1.1 +/-0.1 WAS 1.1 +/-0.1 MSS 1.1 +/-0.1 WAR 1.1 +/-0.1 DIN 0.3 +/-0.05 WAS 0.3 +/-0.03 MSS 0.3 +/-0.05 WAR 0.3 +/-0.03					
2.6	0.2	19.8	0.3	6.6	2.2	3	.	9.0	7.5	.	1.2	1.0	.	3.8	3.45	.	3.75	3.1	0.25±0.03	se1. Au	CuFe2	530-570	.	1.0-1.5	.	UNSEALED	2	15493008	② 15493009	02	11JA06	H10	04	DIN 2.7 +/-0.07-0.1 WAR 2.7 +/-0.05 MSS 2.7 +/-0.07-0.1 WAR 2.7 +/-0.05 DIN 2.3 +/-0.07-0.1 WAS 2.3 +/-0.05 MSS 2.3 +/-0.07-0.1 WAR 2.3 +/-0.05					
2.6	0.2	19.8	0.3	6.6	2.2	3	.	7.7	5.55	.	1.15	0.85	.	3.3	2.6	.	3.1	2.4	0.25±0.03	se1. Au	CuFe2	530-570	.	0.5-1.0	.	UNSEALED	2	15493006	② 15493007	02	11JA06	H10	04	DIN 1.8 +/-0.15-0.0 WAS 1.8 +/-0.1/-0.0 MSS 1.8 +/-0.15-0.0 WAR 1.8 +/-0.1/-0.0	30MROS	WIRTH	CVASA	R.WIS.	
3.5	0.2	19.8	0.3	5.7	2.0	2.5	.	5.5	3.8	.	0.8	0.65	.	2.3	1.7	.	2.3	1.8	0.25±0.03	se1. Au	CuFe2	530-570	.	0.22-0.35	.	UNSEALED	2	15493004	② 15493005	02	11JA06	H10	04	DIN 1.1 +/-0.1 WAS 1.1 +/-0.1 MSS 1.1 +/-0.1 WAR 1.1 +/-0.1 PART-NO. 13740312 ADDED PART-NO. 13740312 ZUBEUEBT					
2.6	0.2	19.8	0.3	6.6	1.6	3	.	8.35	5.8	.	1.15	0.85	.	3.7	2.6	.	3.4	2.4	0.25±0.03	se1. Au	CuFe2	530-570	.	0.35+0.35 / 0.5+0.5	.	UNSEALED	2	15493010	② 15493011	02	11JA06	H10	04	PART-NO. 13740312 ADDED PART-NO. 13740312 ZUBEUEBT PART-NO. 13740311 ADDED PART-NO. 13740311 ZUBEUEBT					
2.6	0.2	19.8	0.3	6.6	2.2	3	.	9.0	7.5	.	1.2	1.0	.	3.8	3.45	.	3.75	3.1	0.25±0.03	fSn3	CuNi1,5Si	580-650	.	1.0-1.5	.	UNSEALED	2	13740306	13740312 ④	01	12JA08	H10	04	PART-NO. 13740310 ADDED PART-NO. 13740310 ZUBEUEBT PART-NO. 13819159 ADDED PART-NO. 13819159 ZUBEUEBT					
2.6	0.2	19.8	0.3	6.6	2.2	3	.	7.7	5.55	.	1.15	0.85	.	3.3	2.6	.	3.1	2.4	0.25±0.03	fSn3	CuNi1,5Si	580-650	.	0.5-1.0	.	UNSEALED	2	13740315	13740311 ④	01	12JA08	H10	04	VIEW FOR PART-NR. 13819159 ADDED ANSICHT FUER PART-NR. 13819159 HINZU					
3.5	0.2	19.8	0.3	5.7	2.0	2.5	.	5.5	3.8	.	0.8	0.65	.	2.3	1.7	.	2.3	1.8	0.25±0.03	fSn3	CuNi1,5Si	580-650	.	0.22-0.35	.	UNSEALED	2	13740304	13740310 ④	01	12JA08	H10	04	DIN 2.3 +/-0.07-0.1 WAS 2.3 +/-0.05 MSS 2.3 +/-0.07-0.1 WAR 2.3 +/-0.05					
2.6	0.2	19.75	0.3	6.25	1.5	3.25	.	4	3.5	0.5	0.75	0.5	1.5	1.75	1.6	1.5	1.8	1.6	0.25±0.03	fSn3	CuFe2	530-570	.	0.08-0.18	.	UNSEALED	2	13819150	13819159 ⑤	01	16FE10	H10	04	PART-NO. 33213534 / 35 / 36 ADDED PART-NO. 33213534 / 35 / 36 ZUBEUEBT NOTE MAX. MATING FORCE ... ADDED BEMERKUNG MAX. STECKKRAFT ... HINZU					
2.6	0.2	19.8	0.5 Δ	6.6	2.2	3	.	9.0	7.5	.	1.2	1.0	.	3.8	3.45	.	3.75	3.1	0.25±0.03	fSn3	CuFe2	530-570	.	1.0-1.5	.	UNSEALED	2	33213533	33213536 ⑤	02	01AP16	H10	04	IDENTIFICATION HOLE ... ADDED KENNZEICHNUNGSLUCH ... HINZU					
2.6	0.2	19.8	0.5 Δ	6.6	2.2	3	.	7.7	5.55	.	1.15	0.85	.	3.3	2.6	.	3.1	2.4	0.25±0.03	fSn3	CuFe2	530-570	.	0.5-1.0	.	UNSEALED	2	33213531	33213534 ⑤	02	01AP16	H10	04	NOTE IDENTIFICATION HOLE ... ADDED BEMERKUNG: KENNZEICHNUNGSLUCH ... HINZU					
3.5	0.2	19.8	0.5 Δ	5.7	2.0	2.5	.	5.5	3.8	.	0.8	0.65	.	2.3	1.7	.	2.3	1.8	0.25±0.03	fSn3	CuFe2	530-570	.	0.22-0.35	.	UNSEALED	2	33213532	33213535 ⑤	02	01AP16	H10	04	PART NR. 33279564 WAS 15432206 TEILENR. 33279564 WAS 15432206 NOTE : IDENTIFICATION HOLE ... ADDED BEMERKUNG: KENNZEICHNUNGSLUCH ... HINZU					



**NOTES**

- MAX. MATING FORCE MEASURED WITH GAUGE PIN (STEEL, POLISHED) (NOT FOR PN 33213534 / 35 / 36 )  
1.5 x 0.6mm (PART-NR. 10803465) : 5.5 N  
1.5 x 0.8mm (PART-NR. 10757844) : 7.0 N
- MAX. MATING FORCE MEASURED WITH GAUGE PIN (STEEL, POLISHED) (ONLY FOR PN 33213534 / 35 / 36 )  
1.5 x 0.8mm (PART-NR. 10757844) : 3.5 N
- CRIMP MANUFACTURING PARAMETERS AND TOOLING ACCORDING TO DELPHI-SPECIFICATION
- MAX. AXIAL MOVEMENT 0.1mm BETWEEN SLEEVE AND BODY TERMINAL

④ ONLY FOR 0,8MM MALE TAB THICKNESS  
⑤

**BEMERKUNG**

- MAX. STECKKRAFT GEMESSEN MIT PRUEFSTIFT (STAHL, POLIERT) (NICHT FUER PN 33213534 / 35 / 36 )  
1.5 x 0.6mm (PART-NR. 10803465) : 5.5 N  
1.5 x 0.8mm (PART-NR. 10757844) : 7.0 N
- MAX. STECKKRAFT GEMESSEN MIT PRUEFSTIFT (STAHL, POLIERT) (NUR FUER PN 33213534 / 35 / 36 )  
1.5 x 0.8mm (PART-NR. 10757844) : 3.5 N
- CRIMPVERARBEITUNGSPARAMETER UND WERKZEUGE GEMAES DELPHI-SPECIFICATION
- MAX. AXIALES SPIEL 0.1mm ZWISCHEN UEBERFEDER UND BASISTEIL

④ NUR FUER 0,8MM STIFTDÜCKE  
⑤

SCALE/MASSSTAB	SCALE/MASSSTAB	DRAWING-NO. / ZEICHNUNG-NR.		DATE / DATUM	NAME	CHECK	STCHK
1:1	5:1	15432239	01-01	11JA06	WIRTH	CVASA	R.WIS.
TITLE/BENENNUNG		CTS 1.5 MM COMPACT TERMINAL SYSTEM 1.5; UNSEALED KOMPAKT TERMINAL SYSTEM 1.5; UNGEDICHTET					
DIMENSIONAL RANGE (MM) NENNMASSBEREICH (MM)		FROM 0 TO >12	TOLERANCE UNLESS OTHERWISE SPECIFIED ALL GEMEINTOLERANZEN				
ANGULAR TOLERANCE ± 2° WINKELTOLERANZ ± 2°							
REPLACEMENT FOR/ERSATZ FUER		DRAWING/REF. NO./ZEICHNUNGS-/TEIL-NR					
VOLUME / WEIGHT (CM³ / G)		MATERIAL WERKSTOFF					
PROJECTION		DRAWING-NO. / ZEICHNUNG-NR.					
PAGE - FROM		STATUS					
SCALE/MASSSTAB		FORMAT					