

D SUB HD FE 15P SOLDER CUP S4

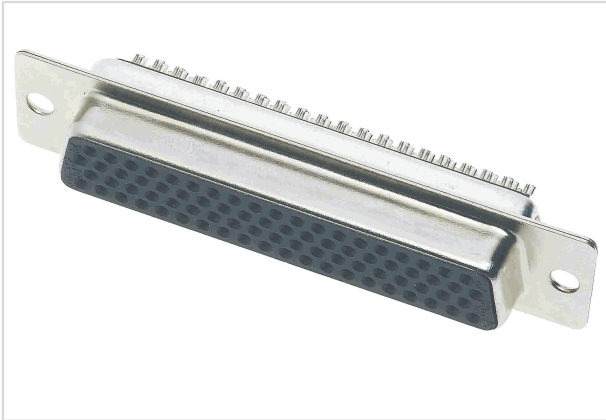


Image is for illustration purposes only. Please refer to product description.

Part number	09 56 100 4715 050
Specification	D SUB HD FE 15P SOLDER CUP S4
HARTING eCatalogue	https://b2b.harting.com/09561004715050

Identification

Category	Connectors
Series	D-Sub
Identification	High Density
Element	Connector
Description of the contact	Stamped Straight

Version

Termination method	Solder cup termination
Gender	Female
Size	D-Sub 1
Number of contacts	15
Locking type	Fixing flange with feed through hole \varnothing 3.1 mm

Technical characteristics

Conductor cross-section	0.25 mm ²
Conductor cross-section	AWG 24
Rated current	2 A
Clearance distance	\geq 1 mm
Creepage distance	\geq 1 mm
Insulation resistance	$> 5 \times 10^9 \Omega$
Contact resistance	$< 20 \text{ m}\Omega$
Limiting temperature	-40 ... +85 °C



Pushing Performance

Technical characteristics

Withdrawal force	≤9.8 N
Performance level	NM 30 (S4) 1
Mating cycles	≥500
Test voltage $U_{r.m.s.}$	1 kV
Isolation group	IIIa ($175 \leq CTI < 400$)
Hot plugging	No

Material properties

Material (insert)	Thermoplastic resin, glass-fibre filled (PBTP) Shell: steel, nickel plated
Colour (insert)	Black
Material (contacts)	Copper alloy
Surface (contacts)	Noble metal over Ni Mating side Sn over Ni Termination side
Layer thickness	≥0.76 μm
Layer thickness	≥30 μinch
Material flammability class acc. to UL 94	V-0
RoHS	compliant
ELV status	compliant
China RoHS	e
REACH Annex XVII substances	Not contained
REACH ANNEX XIV substances	Not contained
REACH SVHC substances	Not contained
ECHA SCIP number	ecef7555-f643-4ceb-a337-fc54762297f1
California Proposition 65 substances	Not contained

Specifications and approvals

Specifications	DIN 41652
UL / CSA	UL 1977 ECBT2.E102079

Commercial data

Packaging size	100
Net weight	4.88 g
Country of origin	China



Pushing Performance

Commercial data

European customs tariff number 85366990

eCl@ss 27440214 D-Sub coupler

Mouser Electronics

Authorized Distributor

Click to View Pricing, Inventory, Delivery & Lifecycle Information:

[HARTING:](#)

[09561004715050](#)