



ATA6563 Click Quick Start Guide

**Quick Start Guide for ATA6563 Click Using PIC18F66K80
PIM and Automotive Networking Board**

Table of Contents

1. ATA6563 Click Board Overview.....	3
1.1. Example Project Overview.....	3
1.2. Tools Requirements.....	3
1.3. Hardware Setup.....	3
2. Programming the Example Project.....	5
2.1. Running the Example Project.....	5
2.2. How to Generate Example Project Software.....	5
3. Learning OptoLyzer Studio.....	10
The Microchip Web Site.....	16
Customer Change Notification Service.....	16
Customer Support.....	16
Microchip Devices Code Protection Feature.....	16
Legal Notice.....	17
Trademarks.....	17
Quality Management System Certified by DNV.....	18
Worldwide Sales and Service.....	19

1. ATA6563 Click Board Overview

The ATA6563 Click Board carries Microchip's ATA6563, a high-speed CAN FD transceiver that provides an interface between a Controller Area Network (CAN) protocol controller and the physical two-wire CAN bus. The transceiver is designed for high-speed (up to 5 Mbit/s) CAN applications in the automotive industry, providing differential transmit and receive capability to a microcontroller that has a built-in CAN protocol controller. It is also backward compatible with classic CAN controllers.

1.1 Example Project Overview

The example project is developed for the PIC18F66K80 to work with the ATA6563 Click Board on the Automotive Networking Demo Board (ANDB) platform.

The PIC18F66K80 is programmed as a CAN node to only process incoming classic CAN messages with standard filtered IDs: 0x111, 0x222, 0x333 and extended ID 0xAAAAA. The node echoes what it receives. Except for the Data0 byte, all other data bytes received will be immediately retransmitted (echo) back to the bus. Data0 sent by the PIC18F66K80 always carries the counter value of the number of filtered messages received. The echo message ID sent by this node is 0x400.

Note that per the CAN specification, no two nodes should send out the same CAN message ID on the same CAN bus. If you are using the same code for another CAN node on the same bus, make sure that you change the TX Message ID to a value other than 0x400, 0x111, 0x222, 0x333 and 0xAAAAA.

The K2L OptoLyzer[®] tool will be used as another CAN node to transmit CAN frames to the PIC18F66K80 node. Both the PIC18F66K80 node and the K2L OptoLyzer node operate with bus speeds of 500 kbps at 75% bit sample point.

1.2 Tools Requirements

- Computer with Windows[®] 7 or newer
- Two available high-speed USB ports from the computer
- MPLAB[®] ICD 3 In-Circuit Debugger (Part# [DV164035](#))
- Automotive Networking Development Board (ANDB) (Part#: [ADM00716](#))
- 8-bit solution: PIC18F66K80 Plug-In Module (PIM) (Part#: [MA180035](#))
- CAN Transceiver Click Board: ([ATA6563 Click](#))
- MPLAB X IDE v4.10 ([microchip.com/mplabx](#))
- Compiler XC8 version 1.44 ([microchip.com/xc8](#))
- MCC v3.55.1 ([microchip.com/mcc](#))
- CAN cable with both female and male DE-9 connectors (Order# [XK1018](#))
- CAN analyzer hardware ([K2L OptoLyzer[®] MOCCA FD](#))
- CAN analyzer software ([K2L OptoLyzer[®] Studio Foundation V1.3.0](#))
- 12V power supply ([PS0019](#)) or 9V power supply ([AC002014](#)) for ANDB
- 12V power supply for MOCCA FD (Order# [X13167](#))

1.3 Hardware Setup

Before applying power to the Automotive Networking Development Board (ANDB), do the following:

ATA6563 Click Quick Start Guide

ATA6563 Click Board Overview

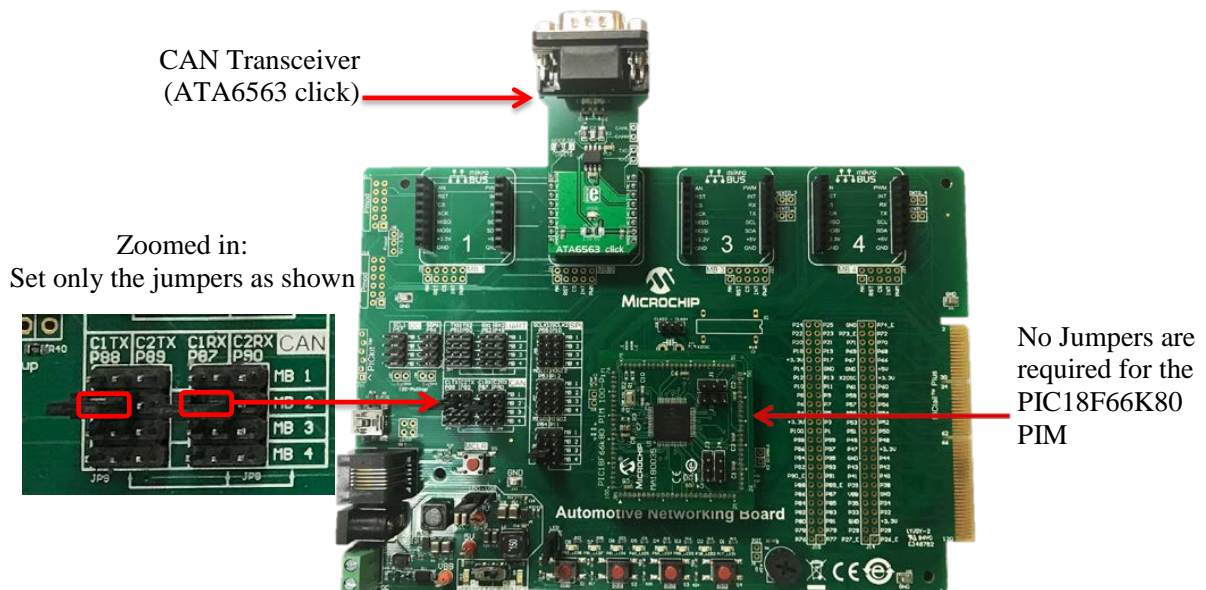
1. Confirm the PIC18F66K80 PIM is plugged in as seen in the figure below. The corner cutout of the PIM must align with the U1 marking on the ANDB.
2. Confirm the CAN Transceiver Click Board (ATA6563 Click Board) is plugged into mikroBUS socket 2 (MB 2) on the ANDB. See the figure below.
3. Configure the jumpers according to the figure below.
4. Connect the CAN BUS cable with the CAN Transceiver Click Board.
5. Connect the CAN BUS cable with the K2L MOCCA FD (high-speed CAN channel 1).
6. Connect the K2L MOCCA FD to the computer with the USB cable.
7. Connect the MPLAB ICD 3 to the computer using the USB cable.
8. Connect the MPLAB ICD 3 to the ANDB's RJ11 connector.



Important: Prior to power up, the switch for the “VDD VOLTAGE SELECT” on the ANDB must be set to +3.3V and not +5.5V to prevent damage to the MCU on the PIM. Although the PIC18F PIM used here may run at 5V, other PIMs sharing the ANDB may only run at +3.3V.

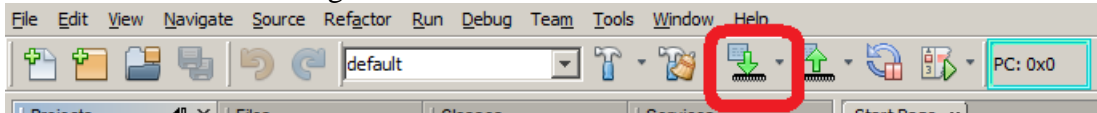
9. Finally, plug the 9V power supply into the barrel connector to apply power to the ANDB.

Figure 1-1. Board Jumper Configuration



2. Programming the Example Project

1. Open MPLAB X IDE.
2. Open the downloaded project from ...**ata6563_pic18f66k80_ANDB.x**
3. From MPLAB X IDE, right click on the project and select **Set as main project** to make the current project the main project.
4. Select the "Make and Program Device" button as shown below:



2.1 Running the Example Project

If you do not have experience with OptoLyzer Studio, read the [3. Learning OptoLyzer Studio](#) section that has step-by-step instructions on how to use OptoLyzer Studio for this example demo.

1. Connect the K2L MOCCA FD tool and set it up at 500 Kbps.
2. Send a message with one of the IDs: 0x111, 0x222, 0x333, or 0xAAAAA, with up to 8 data bytes. You will see the echoed message from the PIC18F66K80 node shown in the trace window. Again, the Data0 byte of the echoed message will be a counter, and the data reflection will be from Data1 to Data7 bytes.
3. Send a message with an ID other than 0x111, 0x222, 0x333, or 0xAAAAA. You will not see an echo from the PIM node.

2.2 How to Generate Example Project Software

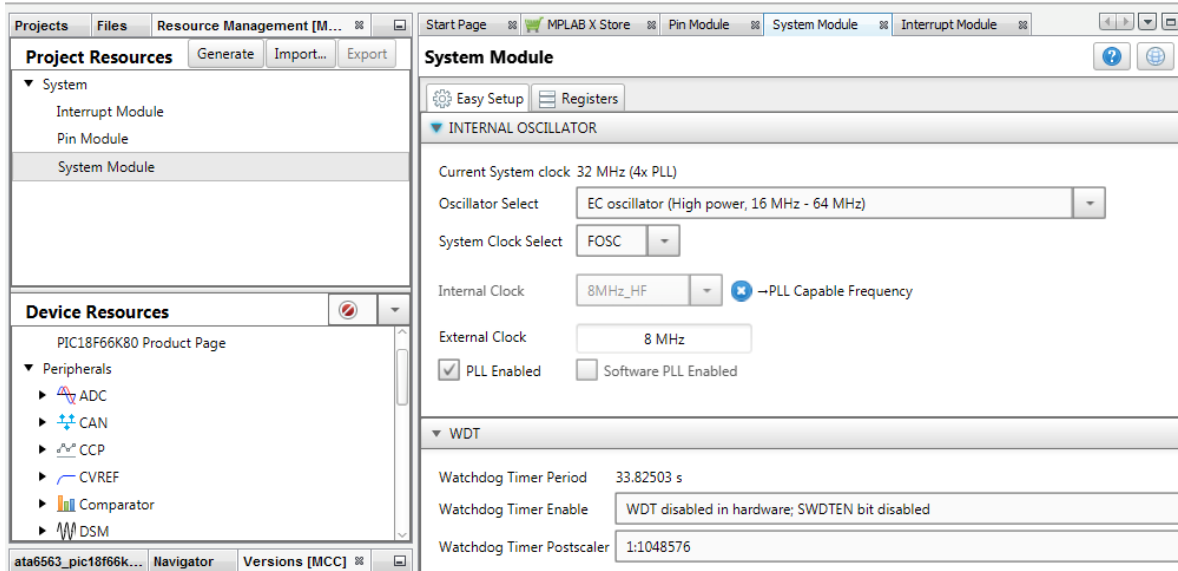
1. Create a new PIC18F66K80 standalone project from MPLAB X IDE.
2. Click on the MCC icon from MPLAB X IDE to open MCC.



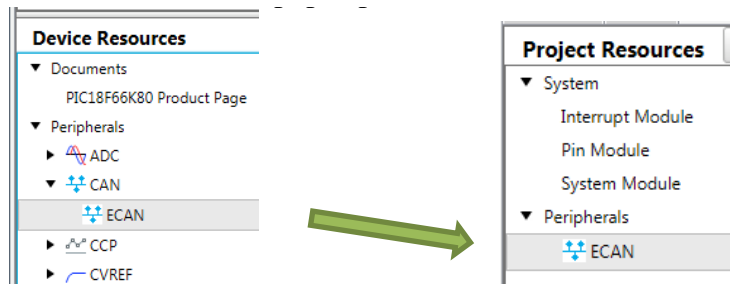
3. Click on System Module under Project Resources and configure as shown below.

ATA6563 Click Quick Start Guide

Programming the Example Project



4. Double click on ECAN under Device Resources. ECAN then appears under Project Resources and its configuration window pops up.



5. Configure the ECAN module as shown below:

ATA6563 Click Quick Start Guide

Programming the Example Project

The screenshot shows the ECAN configurator window with the following settings:

- Bit Rate Settings:**
 - CAN BUS Speed: 500kbps
 - Sync Jump Width: 1 x TQ
 - Time Quanta: 16
 - Sample Point: 75%
 - Sync Segment: 1 x TQ
 - Propagation Segment: 3 x TQ
 - Phase Segment 1: 8 x TQ
 - Phase Segment 2: 4 x TQ
- General Settings:**
 - Enable CAN Line Filter Wake-up
 - Enable CAN Bus Activity Wake-up
- CANTX Pin Drive Settings:**
 - TX Pin Drive: CANTX pin will drive VDD when recessive

Note: MCC preselects “CANTX pin will drive VDD when recessive”, which generates code to set the CIOCON_ENDRHI bit to '1'. This is required for the CANTX pin to drive properly. MCC versions older than v3.55.1 do not have this and require manually adding code to set the CIOCON_ENDRHI bit to '1'. Refer to Step 11.

- In the same ECAN configurator window, scroll down, select Enhanced Legacy Mode (Mode 1) and add the Message ID as shown below:

Note: To add extended ID (EID), append an "x" to the end of the ID. For example, 0xAAAAAx.

ATA6563 Click Quick Start Guide

Programming the Example Project

▼ Transmit-Receive Settings

▼ Transmit Settings

Transmit Buffer B0 Selected Transmit Buffers TXB0, TXB1, TXB2

Note: To deselect a Transmit Buffer, set it as receive buffer through the Receive Buffer menu.

▼ Receive Mode Enhanced Legacy mode (Mode 1) Note : On mode change, the content of table will be cleared.

FIFO Size 8

Message ID 0xAAAAAx + ADD ✕ Remove

Filter Filter 3 Mask Filter 15 Receive Buffer B0

▼ Message Acceptance Filter and Buffer Table

MESSAGE ID	ID TYPE	ACCEPTANCE FILTER	ACCEPTANCE MASK	RECEIVE BUFFER
0x111	SID	Filter 0	Acceptance Mask 0	RXB0
0x222	SID	Filter 1	Acceptance Mask 0	RXB0
0x333	SID	Filter 2	Acceptance Mask 1	RXB1
0xAAAAA	EID	Filter 3	Filter 15	B0

7. Verify or configure the Pin Manager as shown below:

Module	Function	Direction	Port A	Port B	Port C	Port D	Port E	Port F	Port G
ECAN	CANRX	input							
	CANTX	output							
OSC	CLKIN	input							
	CLKOUT	output							
Pin Module	GRD	input							
	GRD	output							
RESET	MCLR	input							

8. Click on Pin Module from Project Resources and configure as shown below:

Projects Files Resource Management [MCC] Pin Module

Project Resources Generate Import... Export

- ▼ System
 - Interrupt Module
 - Pin Module**
 - System Module
- ▼ Peripherals
 - ECAN

Pin Module

Easy Setup Registers

Selected Package : TQFP64

Pin Name	Module	Function	Custom Name	Start High	Analog	Output	WPU
RB2	ECAN	CANTX		<input checked="" type="checkbox"/>		<input checked="" type="checkbox"/>	<input type="checkbox"/>
RB3	ECAN	CANRX		<input type="checkbox"/>		<input type="checkbox"/>	<input type="checkbox"/>

9. Click on Generate to generate the code.

Projects Files Resource Management [M...]

Project Resources Generate Import... Export

- ▼ System
 - Interrupt Module
 - Pin Module**
 - System Module
- ▼ Peripherals
 - ECAN

10. Open the pregenerated project and copy the pasted code from main.c to your self-created main.c

ATA6563 Click Quick Start Guide

Programming the Example Project

- Optional: For older MCC versions, add the code `CIOCONbits.ENDRHI = 1` to the `ECAN_Initialize` function in `ecan.c` as shown below:

```
200 BRGCON1 = 0x01;
201 BRGCON2 = 0xBA;
202 BRGCON3 = 0x03;
203
204 // Manually added.
205 // A required step to enable CAN_TX properly drives to VDD
206 CIOCONbits.ENDRHI = 1 ;
207
208 CANCON = 0x00;
209 while (0x00 != (CANSTAT & 0xE0)); // wait until ECAN is in N
```

Note:

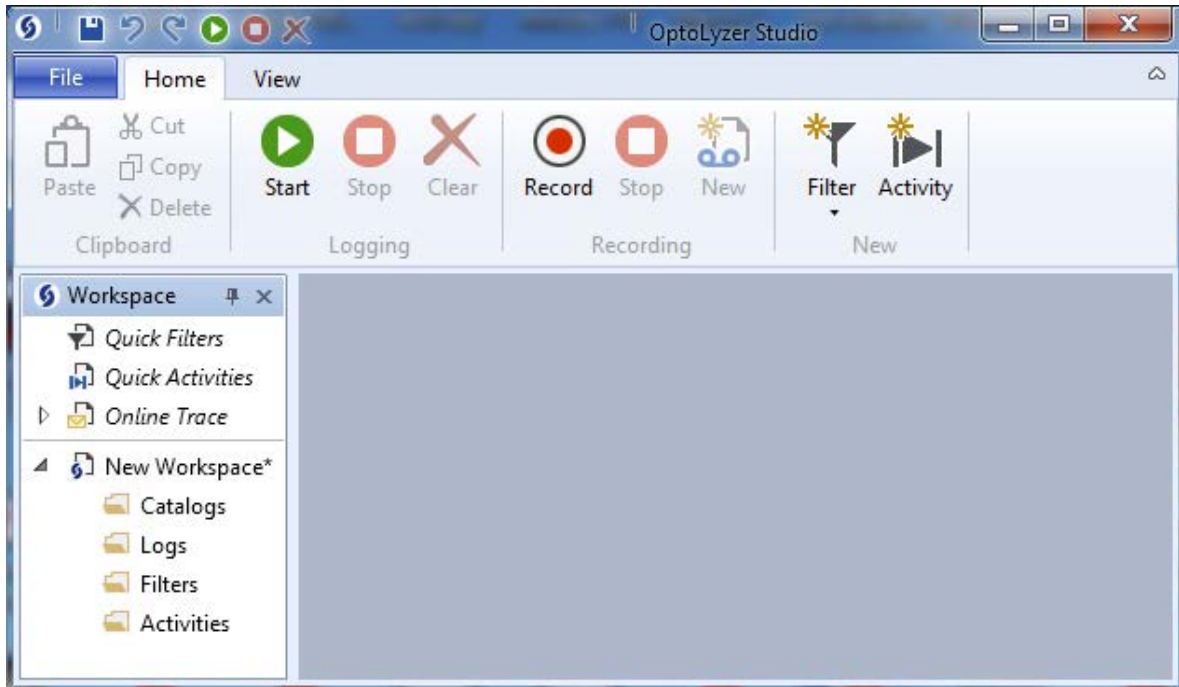
- Make sure to manually add this code back every time you regenerate MCC code.
 - MCC v3.55.1 or newer will generate this code instead of requiring it to be manually added as shown above.
- Follow earlier sections to program and run the project.

3. Learning OptoLyzer Studio

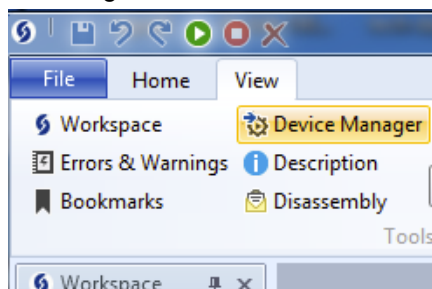
1. Click on the icon on the desktop to open OptoLyzer Studio



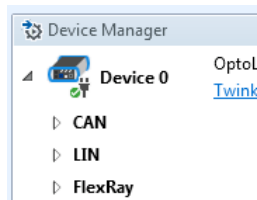
2. The following screen will appear:



3. From the View tab, select Device Manager:



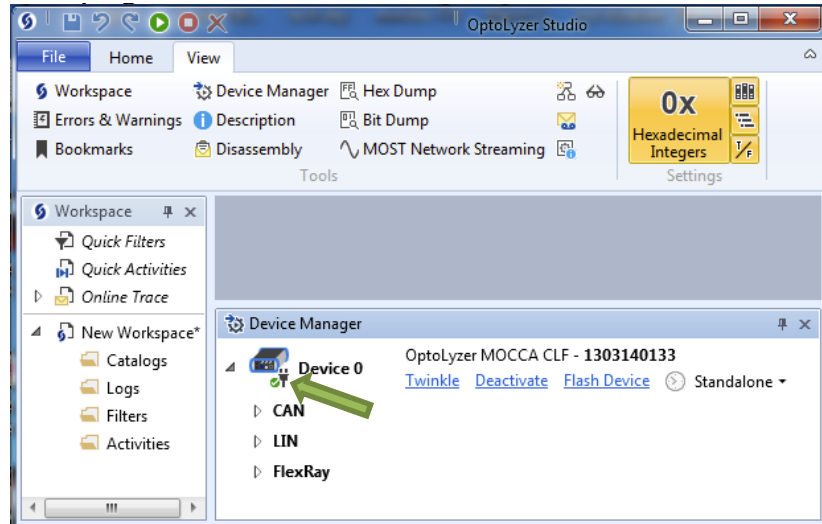
4. The Device Manager window is a central point to configure and maintain connected devices. Expand Device 0 to see a list of all supported protocols:



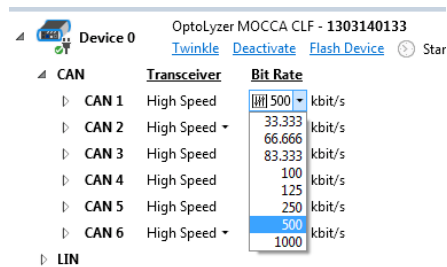
ATA6563 Click Quick Start Guide

Learning OptoLyzer Studio

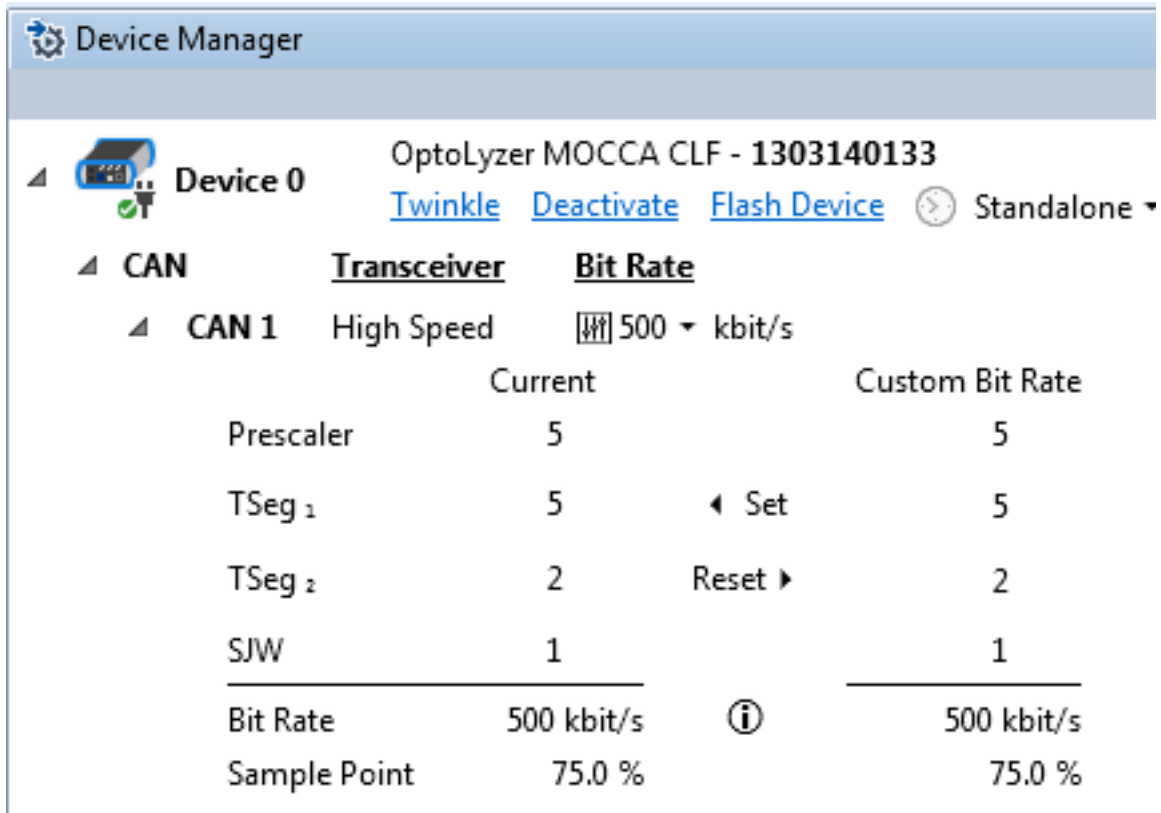
5. Make sure that the OptoLyzer MOCCA FD tool is connected to the computer. The green tick mark at the bottom of the device should be green. Otherwise, power cycle the MOCCA FD tool or re-plug the USB cable from the PC.



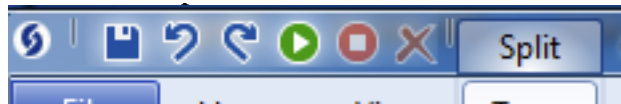
6. To set the Bit Rate of the CAN channel, click on the arrow next to the CAN menu to show a list of available CAN channels on the MOCCA FD tool. CAN1 channel is used. Select the bit rate as shown below:



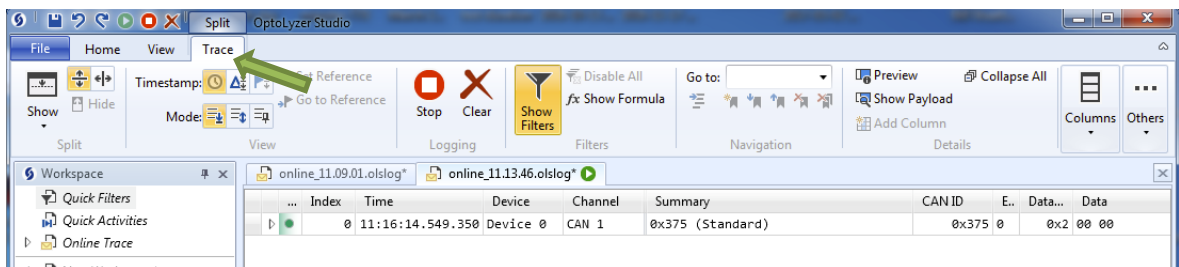
7. Click on the arrow next to CAN1. Then set the OptoLyzer Node sample point to be the same as the PIC18F66K80 node at 75% as shown below:



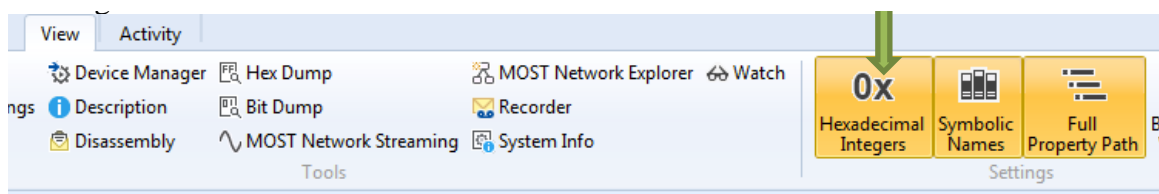
- From the top menu bar, click on the green start button to start monitoring the bus. To stop, click on the red stop button. To clear the trace window, click on the red X button.



- A Trace tab window as shown below will appear. The sub tab name with “online_xx.xx.xx.olslog” is where you monitor the CAN bus data. If you have started multiple “online_...” tabs, make sure you are monitoring the active one. The active tab should be the one where you started with the green start button.



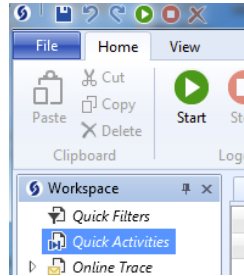
- Under the View tab, make sure “Hexadecimal Integers” is selected. This allows easy viewing and CAN data entries in hex format.



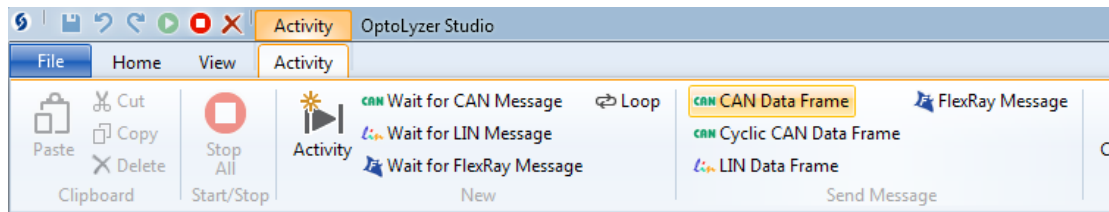
ATA6563 Click Quick Start Guide

Learning OptoLyzer Studio

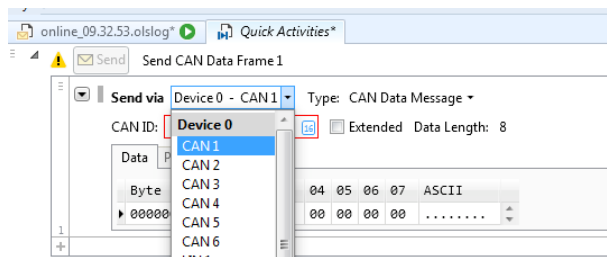
11. To transmit a CAN message from the OptoLyzer MOCCA FD tool, click on “Quick Activities” under the Workspace panel.



12. Under the Activity tab, click on the “CAN Data Frame” button to create a CAN frame message.



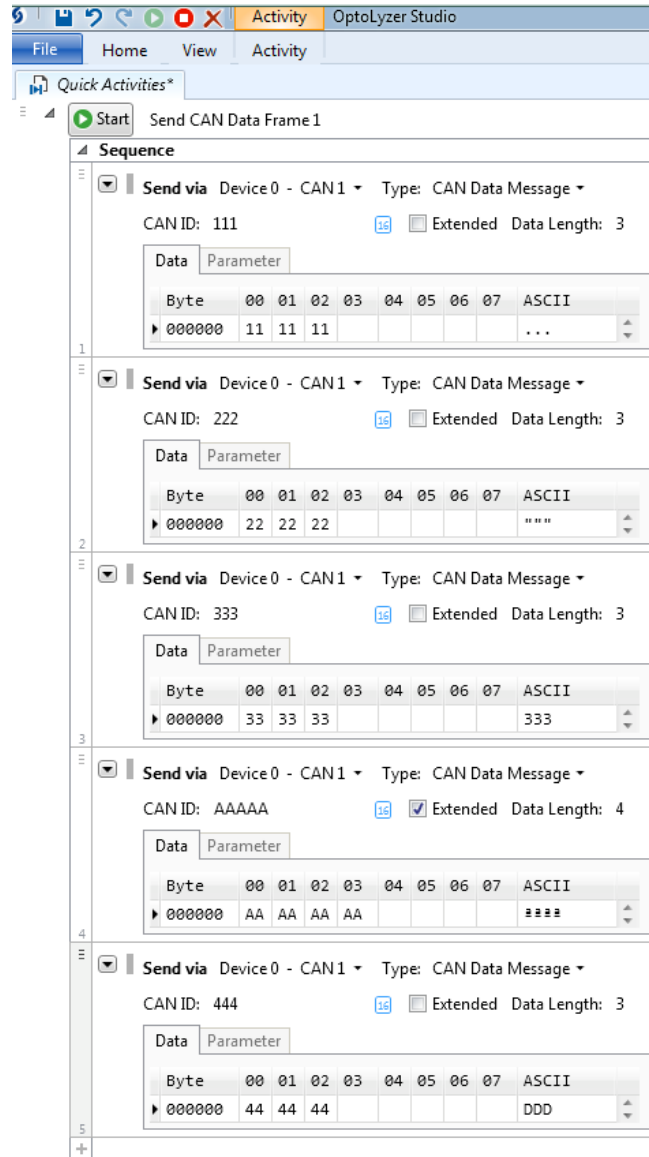
13. Select the corresponding **CAN 1** Channel that is currently connected to the MOCCA FD tool.



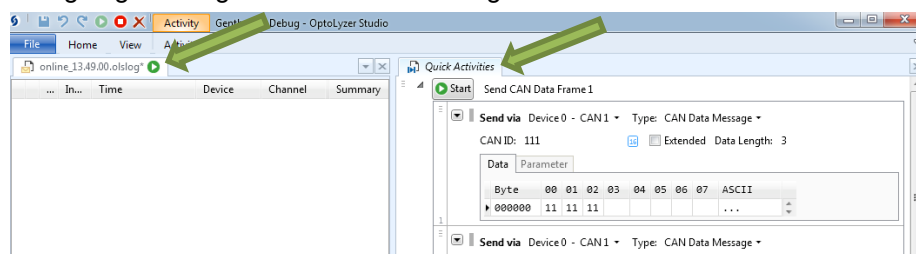
14. Configure the frame's ID to be one of the filtered IDs described in the example project. The message data length is arbitrary in this example project. Enter any values for the data bytes. Or follow the figure below:

ATA6563 Click Quick Start Guide

Learning OptoLyzer Studio



15. Arrange the windows by dragging tabs for "online_xxxx.olslog" and "Quick Activities" so they are side by side. Drag by holding the tab as indicated by the green arrow below. This will make it easier for us to see ongoing messages as we send messages from the MOCCA FD tool instead.



16. When done, click "Send" or "Start" in the Quick Activities window. Note that the PIC18F node only retransmits messages received from filtered IDs. It ignores message IDs that are not configured for the node. See below:

ATA6563 Click Quick Start Guide

Learning OptoLyzer Studio

online_15.30.27.olslog*									
...	Index	Time	Device	Channel	Summary	ID	Data Length	Data	
▶	0	17:09:52.833.407	Device 0	CAN 1	0x111 (Standard)	0x111	0x3	11 11 11	← Sent filtered ID from OptoLyzer
▶	1	17:09:52.833.615	Device 0	CAN 1	0x400 (Standard)	0x400	0x3	01 11 11	← Echo from ANDB
▶	2	17:09:52.834.969	Device 0	CAN 1	0x222 (Standard)	0x222	0x3	22 22 22	← Sent filtered ID from OptoLyzer
▶	3	17:09:52.835.177	Device 0	CAN 1	0x400 (Standard)	0x400	0x3	02 22 22	← Echo from ANDB
▶	4	17:09:52.836.563	Device 0	CAN 1	0x333 (Standard)	0x333	0x3	33 33 33	← Sent filtered ID from OptoLyzer
▶	5	17:09:52.836.769	Device 0	CAN 1	0x400 (Standard)	0x400	0x3	03 33 33	← Echo from ANDB
▶	6	17:09:52.838.147	Device 0	CAN 1	0x000AAAAA (Extended)	0x000AAAAA	0x4	AA AA AA AA	← Sent filtered ID from OptoLyzer
▶	7	17:09:52.838.425	Device 0	CAN 1	0x00000400 (Extended)	0x00000400	0x4	04 AA AA AA	← Echo from ANDB
▶	8	17:09:52.839.543	Device 0	CAN 1	0x444 (Standard)	0x444	0x3	44 44 44	← Not filtered ID. No Echo.

The Microchip Web Site

Microchip provides online support via our web site at <http://www.microchip.com/>. This web site is used as a means to make files and information easily available to customers. Accessible by using your favorite Internet browser, the web site contains the following information:

- **Product Support** – Data sheets and errata, application notes and sample programs, design resources, user's guides and hardware support documents, latest software releases and archived software
- **General Technical Support** – Frequently Asked Questions (FAQ), technical support requests, online discussion groups, Microchip consultant program member listing
- **Business of Microchip** – Product selector and ordering guides, latest Microchip press releases, listing of seminars and events, listings of Microchip sales offices, distributors and factory representatives

Customer Change Notification Service

Microchip's customer notification service helps keep customers current on Microchip products. Subscribers will receive e-mail notification whenever there are changes, updates, revisions or errata related to a specified product family or development tool of interest.

To register, access the Microchip web site at <http://www.microchip.com/>. Under "Support", click on "Customer Change Notification" and follow the registration instructions.

Customer Support

Users of Microchip products can receive assistance through several channels:

- Distributor or Representative
- Local Sales Office
- Field Application Engineer (FAE)
- Technical Support

Customers should contact their distributor, representative or Field Application Engineer (FAE) for support. Local sales offices are also available to help customers. A listing of sales offices and locations is included in the back of this document.

Technical support is available through the web site at: <http://www.microchip.com/support>

Microchip Devices Code Protection Feature

Note the following details of the code protection feature on Microchip devices:

- Microchip products meet the specification contained in their particular Microchip Data Sheet.
- Microchip believes that its family of products is one of the most secure families of its kind on the market today, when used in the intended manner and under normal conditions.
- There are dishonest and possibly illegal methods used to breach the code protection feature. All of these methods, to our knowledge, require using the Microchip products in a manner outside the operating specifications contained in Microchip's Data Sheets. Most likely, the person doing so is engaged in theft of intellectual property.
- Microchip is willing to work with the customer who is concerned about the integrity of their code.

- Neither Microchip nor any other semiconductor manufacturer can guarantee the security of their code. Code protection does not mean that we are guaranteeing the product as “unbreakable.”

Code protection is constantly evolving. We at Microchip are committed to continuously improving the code protection features of our products. Attempts to break Microchip’s code protection feature may be a violation of the Digital Millennium Copyright Act. If such acts allow unauthorized access to your software or other copyrighted work, you may have a right to sue for relief under that Act.

Legal Notice

Information contained in this publication regarding device applications and the like is provided only for your convenience and may be superseded by updates. It is your responsibility to ensure that your application meets with your specifications. MICROCHIP MAKES NO REPRESENTATIONS OR WARRANTIES OF ANY KIND WHETHER EXPRESS OR IMPLIED, WRITTEN OR ORAL, STATUTORY OR OTHERWISE, RELATED TO THE INFORMATION, INCLUDING BUT NOT LIMITED TO ITS CONDITION, QUALITY, PERFORMANCE, MERCHANTABILITY OR FITNESS FOR PURPOSE. Microchip disclaims all liability arising from this information and its use. Use of Microchip devices in life support and/or safety applications is entirely at the buyer’s risk, and the buyer agrees to defend, indemnify and hold harmless Microchip from any and all damages, claims, suits, or expenses resulting from such use. No licenses are conveyed, implicitly or otherwise, under any Microchip intellectual property rights unless otherwise stated.

Trademarks

The Microchip name and logo, the Microchip logo, AnyRate, AVR, AVR logo, AVR Freaks, BeaconThings, BitCloud, CryptoMemory, CryptoRF, dsPIC, FlashFlex, flexPWR, Heldo, JukeBlox, KeeLoq, KeeLoq logo, Kleer, LANCheck, LINK MD, maXStylus, maXTouch, MediaLB, megaAVR, MOST, MOST logo, MPLAB, OptoLyzer, PIC, picoPower, PICSTART, PIC32 logo, Prochip Designer, QTouch, RightTouch, SAM-BA, SpyNIC, SST, SST Logo, SuperFlash, tinyAVR, UNI/O, and XMEGA are registered trademarks of Microchip Technology Incorporated in the U.S.A. and other countries.

ClockWorks, The Embedded Control Solutions Company, EtherSynch, Hyper Speed Control, HyperLight Load, IntelliMOS, mTouch, Precision Edge, and Quiet-Wire are registered trademarks of Microchip Technology Incorporated in the U.S.A.

Adjacent Key Suppression, AKS, Analog-for-the-Digital Age, Any Capacitor, AnyIn, AnyOut, BodyCom, chipKIT, chipKIT logo, CodeGuard, CryptoAuthentication, CryptoCompanion, CryptoController, dsPICDEM, dsPICDEM.net, Dynamic Average Matching, DAM, ECAN, EtherGREEN, In-Circuit Serial Programming, ICSP, Inter-Chip Connectivity, JitterBlocker, KleerNet, KleerNet logo, Mindi, MiWi, motorBench, MPASM, MPF, MPLAB Certified logo, MPLIB, MPLINK, MultiTRAK, NetDetach, Omniscient Code Generation, PICDEM, PICDEM.net, PCKit, PICtail, PureSilicon, QMatrix, RightTouch logo, REAL ICE, Ripple Blocker, SAM-ICE, Serial Quad I/O, SMART-I.S., SQI, SuperSwitcher, SuperSwitcher II, Total Endurance, TSHARC, USBCheck, VariSense, ViewSpan, WiperLock, Wireless DNA, and ZENA are trademarks of Microchip Technology Incorporated in the U.S.A. and other countries.

SQTP is a service mark of Microchip Technology Incorporated in the U.S.A.

Silicon Storage Technology is a registered trademark of Microchip Technology Inc. in other countries.

GestIC is a registered trademark of Microchip Technology Germany II GmbH & Co. KG, a subsidiary of Microchip Technology Inc., in other countries.

All other trademarks mentioned herein are property of their respective companies.

© 2018, Microchip Technology Incorporated, Printed in the U.S.A., All Rights Reserved.

ISBN: 978-1-5224-3160-2

Quality Management System Certified by DNV

ISO/TS 16949

Microchip received ISO/TS-16949:2009 certification for its worldwide headquarters, design and wafer fabrication facilities in Chandler and Tempe, Arizona; Gresham, Oregon and design centers in California and India. The Company's quality system processes and procedures are for its PIC[®] MCUs and dsPIC[®] DSCs, KEELOQ[®] code hopping devices, Serial EEPROMs, microperipherals, nonvolatile memory and analog products. In addition, Microchip's quality system for the design and manufacture of development systems is ISO 9001:2000 certified.

Worldwide Sales and Service

AMERICAS	ASIA/PACIFIC	ASIA/PACIFIC	EUROPE
<p>Corporate Office 2355 West Chandler Blvd. Chandler, AZ 85224-6199 Tel: 480-792-7200 Fax: 480-792-7277 Technical Support: http://www.microchip.com/support Web Address: www.microchip.com</p> <p>Atlanta Duluth, GA Tel: 678-957-9614 Fax: 678-957-1455</p> <p>Austin, TX Tel: 512-257-3370</p> <p>Boston Westborough, MA Tel: 774-760-0087 Fax: 774-760-0088</p> <p>Chicago Itasca, IL Tel: 630-285-0071 Fax: 630-285-0075</p> <p>Dallas Addison, TX Tel: 972-818-7423 Fax: 972-818-2924</p> <p>Detroit Novi, MI Tel: 248-848-4000</p> <p>Houston, TX Tel: 281-894-5983</p> <p>Indianapolis Noblesville, IN Tel: 317-773-8323 Fax: 317-773-5453 Tel: 317-536-2380</p> <p>Los Angeles Mission Viejo, CA Tel: 949-462-9523 Fax: 949-462-9608 Tel: 951-273-7800</p> <p>Raleigh, NC Tel: 919-844-7510</p> <p>New York, NY Tel: 631-435-6000</p> <p>San Jose, CA Tel: 408-735-9110 Tel: 408-436-4270</p> <p>Canada - Toronto Tel: 905-695-1980 Fax: 905-695-2078</p>	<p>Australia - Sydney Tel: 61-2-9868-6733</p> <p>China - Beijing Tel: 86-10-8569-7000</p> <p>China - Chengdu Tel: 86-28-8665-5511</p> <p>China - Chongqing Tel: 86-23-8980-9588</p> <p>China - Dongguan Tel: 86-769-8702-9880</p> <p>China - Guangzhou Tel: 86-20-8755-8029</p> <p>China - Hangzhou Tel: 86-571-8792-8115</p> <p>China - Hong Kong SAR Tel: 852-2943-5100</p> <p>China - Nanjing Tel: 86-25-8473-2460</p> <p>China - Qingdao Tel: 86-532-8502-7355</p> <p>China - Shanghai Tel: 86-21-3326-8000</p> <p>China - Shenyang Tel: 86-24-2334-2829</p> <p>China - Shenzhen Tel: 86-755-8864-2200</p> <p>China - Suzhou Tel: 86-186-6233-1526</p> <p>China - Wuhan Tel: 86-27-5980-5300</p> <p>China - Xian Tel: 86-29-8833-7252</p> <p>China - Xiamen Tel: 86-592-2388138</p> <p>China - Zhuhai Tel: 86-756-3210040</p>	<p>India - Bangalore Tel: 91-80-3090-4444</p> <p>India - New Delhi Tel: 91-11-4160-8631</p> <p>India - Pune Tel: 91-20-4121-0141</p> <p>Japan - Osaka Tel: 81-6-6152-7160</p> <p>Japan - Tokyo Tel: 81-3-6880-3770</p> <p>Korea - Daegu Tel: 82-53-744-4301</p> <p>Korea - Seoul Tel: 82-2-554-7200</p> <p>Malaysia - Kuala Lumpur Tel: 60-3-7651-7906</p> <p>Malaysia - Penang Tel: 60-4-227-8870</p> <p>Philippines - Manila Tel: 63-2-634-9065</p> <p>Singapore Tel: 65-6334-8870</p> <p>Taiwan - Hsin Chu Tel: 886-3-577-8366</p> <p>Taiwan - Kaohsiung Tel: 886-7-213-7830</p> <p>Taiwan - Taipei Tel: 886-2-2508-8600</p> <p>Thailand - Bangkok Tel: 66-2-694-1351</p> <p>Vietnam - Ho Chi Minh Tel: 84-28-5448-2100</p>	<p>Austria - Wels Tel: 43-7242-2244-39 Fax: 43-7242-2244-393</p> <p>Denmark - Copenhagen Tel: 45-4450-2828 Fax: 45-4485-2829</p> <p>Finland - Espoo Tel: 358-9-4520-820</p> <p>France - Paris Tel: 33-1-69-53-63-20 Fax: 33-1-69-30-90-79</p> <p>Germany - Garching Tel: 49-8931-9700</p> <p>Germany - Haan Tel: 49-2129-3766400</p> <p>Germany - Heilbronn Tel: 49-7131-67-3636</p> <p>Germany - Karlsruhe Tel: 49-721-625370</p> <p>Germany - Munich Tel: 49-89-627-144-0 Fax: 49-89-627-144-44</p> <p>Germany - Rosenheim Tel: 49-8031-354-560</p> <p>Israel - Ra'anana Tel: 972-9-744-7705</p> <p>Italy - Milan Tel: 39-0331-742611 Fax: 39-0331-466781</p> <p>Italy - Padova Tel: 39-049-7625286</p> <p>Netherlands - Drunen Tel: 31-416-690399 Fax: 31-416-690340</p> <p>Norway - Trondheim Tel: 47-7289-7561</p> <p>Poland - Warsaw Tel: 48-22-3325737</p> <p>Romania - Bucharest Tel: 40-21-407-87-50</p> <p>Spain - Madrid Tel: 34-91-708-08-90 Fax: 34-91-708-08-91</p> <p>Sweden - Gothenberg Tel: 46-31-704-60-40</p> <p>Sweden - Stockholm Tel: 46-8-5090-4654</p> <p>UK - Wokingham Tel: 44-118-921-5800 Fax: 44-118-921-5820</p>

Mouser Electronics

Authorized Distributor

Click to View Pricing, Inventory, Delivery & Lifecycle Information:

[Microchip:](#)

[ADM00716](#)