

RXS Series Datasheet

Power Wirewound Resistors | Axial and SMD Version
Ceramic core | Flame retardant coating

ORDERING CODE - Example

New SAP Part Nr.:

RXS	340	J	T	-	52-	150R	AA
Serie	* Power rating	Tol. F = ±1% J = ±5%	Pack-Code T = Tape (ammo pack) R = tape and reel	TCR - Base on spec.	Forming type 52- Inner Taping dimension or 91- Inner Taping dimension ZB- Z version	R Value	Special AA = Standard

Historical VTM Part Nr.:

RX0613	5	T	150R
Type	Tol. ±5% = J	Pack-Code T = Tape (ammo pack)	R Value

RZX4	6720	J	K	-	13	150R
Type	Size	Tol.	K = Blister tape reel	TC	Reel diam.	R Value

APPLICATIONS

- Industrial
- Consumer & Electronics
- Power & Energy
- Computer & Peripherals

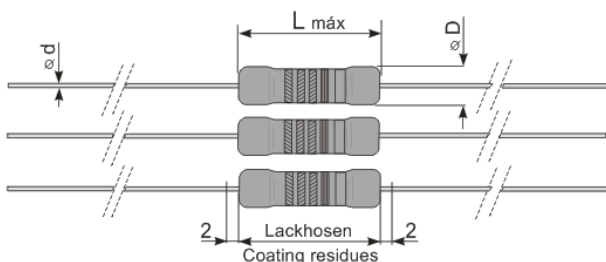
FEATURES

- Flame retardant coating
- "Z" preforming ; Other preforming available
- RoHS & REACH Compliant
- Non-inductive style available with Aryton Perry winding (Series RNS)

ELECTRICAL SPECIFICATIONS

Type		RXS-60	RXS110	RXS230	RXS340	RXS460	RXS570	RXS700
Historical Part Number	AXIAL	RX0207	RX0410	RX0512	RX0613	RX0716	RX0718	RX1026
	SMD	RZX1	RZX2	RZX3	RZX4	RZX5	-----	-----
Nominal Power Rating * P ₄₀ P ₇₀	[W]	0,6	1,1	2,3	3,4	4,6	5,7	7,0
		0,5	1,0	2,0	3,0	4,0	5,0	6,1
Resistance Range (Other values upon request)	[Ω]	Min. OR1	OR047	OR1	OR01	OR1	OR1	OR33
		Max. 100R	1K	2K2	2K2	2K2	6K8	6K8
E-Series (preferred)		E24 (Other upon request)						
Tolerances	±[%]	5 = J ; 1 = F (on request)						
Temperature Coefficient	±[10 ⁻⁶ K ⁻¹]	300						
Working Temperature Range	[°C]	-55 ... +275						
Thermal Resistance	[KW ⁻¹]	410	205	103	69	52	41	34
Max. Working Voltage	[V] _{RMS}	$\sqrt{P_{70} \times R}$						
Dielectric Withstanding Voltage IEC115-1 clause 4.7 (1[min])	[V] _{RMS}	max. 300			max. 400			

DIMENSIONS [mm]



Type	Historical P/N:	L max.	Ø D max.	Ø d ±0,05
RXS-60	RX0207	6,8	2,6	0,55
RXS110	RX0410	10,0	3,9	0,70
RXS230	RX0512	12,5	5,0	0,80
RXS340	RX0613	13,0	5,5	0,80
RXS460	RX0716	16,5	6,0	0,80
RXS570	RX0718	18,5	7,0	0,80
RXS700	RX1026	26,0	9,0	0,80

RXS Series Datasheet

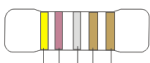
PERFORMANCE DATA

Type		RXS-60	RXS110	RXS230	RXS340	RXS460	RXS570	RXS700
Historical Part Number	AXIAL	RX0207	RX0410	RX0512	RX0613	RX0716	RX0718	RX1026
	SMD	RZX1	RZX2	RZX3	RZX4	RZX5	-----	-----
Derating Linear	[°C]	70...275 (0W)						
Climatic Category		55/275/56						
Failure Rate <i>(Total, ϑ_p, max, 60[%] cont. lev.)</i>	[10 ⁻⁹ h ⁻¹]	appr. 100 depends on value						
Short Time Overload <i>IEC60115-1 clause 4.13 ($U=10 \cdot \sqrt{P_{70} \cdot R}$, 5[s])</i>	±[%]	2,0						
Endurance <i>IEC60115-1 clause 4.25 (P_{70}, @ 70[°C], 1000[h])</i>	±[%]	5,0						
Damp Heat, Steady State <i>IEC60115-1 clause 4.24 (40[°C], 93[% r.h.], 56[d])</i>	±[%]	5,0						
Climatic Sequence <i>IEC60115-1 clause 4.23</i>	±[%]	5,0						
Resistance to Soldering Heat <i>IEC60115-1 clause 4.18 (260^{±5}[°C], 3,5^{±1}[s])</i>	±[%]	2,0						
Terminal Strength	±[%]	1,0						
Terminal Tensile Strength	[N]	24,5						
Solderability <i>IEC60068-2-20 (245^{±5}[°C] 3^{±0,5}[s])</i>		Solder bath method (> 95% coverage)						
Marking <i>IEC60062</i>		Colour code (Values <0R1 5th band ; Values ≥0R1 4th band)						

MARKING [COLOR CODE]:

RXS resistors values <0R1 are marked with five color bands.

RXS resistors values ≥0R1 according IEC60062

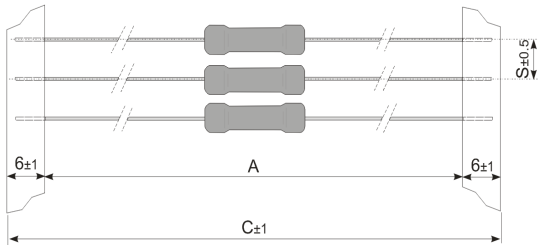


Colour	1st band= 1st digit	2nd band= 2nd digit	3rd band= 1 st multiplier	4th band= 2 nd multiplier	5th band= Tolerance
Silver			x0,01Ω		±10%
Gold			x0,1Ω	x0,1Ω	±5%
Black		0	x1Ω		
Brown	1	1	x10Ω		±1%
Red	2	2	x100Ω		±2%
Orange	3	3	1kΩ		
Yellow	4	4	10kΩ		
Green	5	5	100kΩ		±0,5%
Blue	6	6	1MΩ		±0,25%
Violet	7	7	10MΩ		±0,1%
Grey	8	8			
White	9	9			

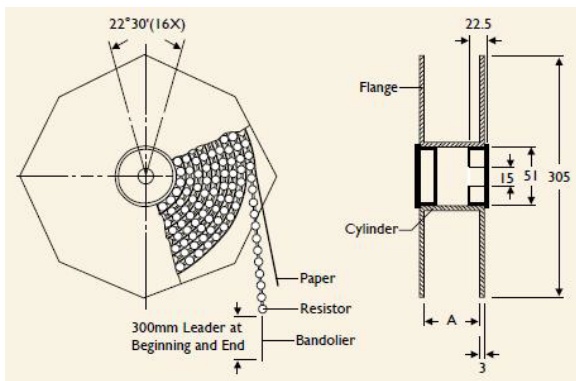
RXS Series Datasheet

PACKAGING

The standard packaging for RXS in axial type is taped, dimensions below.

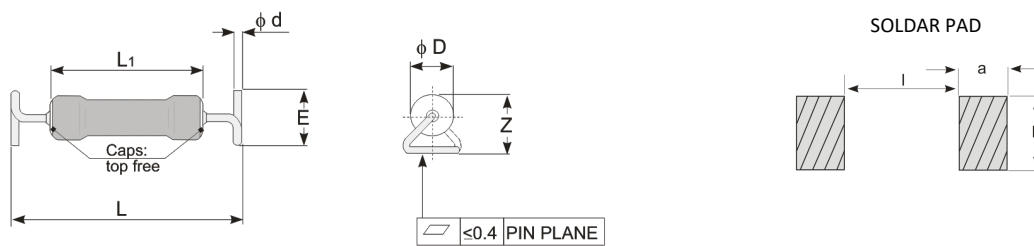


Type	Historical P/N:	Pack Code	SPQ	Forming Type (Inner Taping dim.)	A	C	S
RXS-60	RX0207	T = Taped Ammo pack	5000	52-	52	65	5
RXS110	RX0410		1000		52	65	5
RXS230	RX0512		1000		52	65	5
RXS340	RX0613		1000		52	65	10
RXS460	RX0716		1000		52	65	10
RXS570	RX0718		500		52	65	10
RXS700	RX1026		250	91-	91	105	10



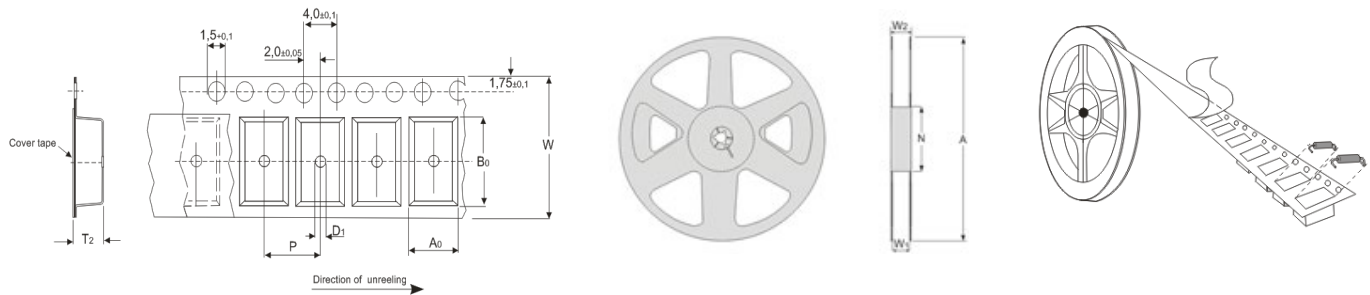
Type	Historical P/N:	Pack Code	SPQ	Forming Type (Inner Taping dim.)	A
RXS230	RX0512	R = Taped and reel	1000	52-	52
RXS340	RX0613		1000		52

SMD LEAD CONFIGURATIONS



Type	Historical P/N	Size	L	L ₁ max.	∅ D max	∅ d ±0,05	E	Z max	l	a	b
RXS-60	RZX1	5315	13,4±0,5	6,8	2,6	0,55	5,0±0,5	7,0	10	10	10
RXS110	RZX2	6720	17,0±1,0	10,0	3,9	0,70		7,5	14		
RXS230	RZX3	6720		12,5	5,0	0,80		8,0	16		
RXS340	RZX4	6720		13,0	5,5	0,80					
RSX460	RZX5	8424	20,9±1,0	16,5	6,0	0,80					

RXS Series Datasheet



Type	A0	B0	W	D1	P	T2
RXS-60	5,0	13,7	24	2,0	8	7,2
RXS110						
RXS230	5,7	16,7	24	2,0	8	7,6
RXS340						
RXS460	6,0	21,4	32	2,0	12	8,1

Type	W1	W2	N	A
RXS-60				
RXS110	25,4	29,5	90	330
RXS230				
RXS340				
RXS460	33,4	37,4	100	380

Type	Packaging	Pieces
RXS-60	13(inch) Blister tape	1000
RXS110		
RXS230		
RXS340		
RXS460	15(inch) Blister tape	

Ordering Code for SMD :

RXS	340	J	K	-	ZB-	150R	AA
Serie	* Power rating	Tol. F = ±1% J = ±5%	Pack-Code K = Blister Tape Reel	TCR - Base on spec.	Forming type ZB- Z version	R Value	Special AA = Standard

ALTERNATIVE LEAD CONFIGURATIONS

This type RXS is also available in a different pre-forming, as shown below, other's upon request.

THOUGH HOLE VERSION

Axial Goal Post (AG-)	Axial Goal Post Kink (AK-)	Radial (RD-)	Radial 2 Kink (RK-)