

JBC

www.jbctools.com

INSTRUCTION MANUAL



Nozzles for Fume Extractor

Ref. FAE080 / FAE081 / FAE082 / FAE083

Nozzles

You can replace the supplied nozzle and choose the one that best suits your needs.



**Rectangular Nozzle
for Fume Extractor**
Ref. FAE080



**Round Nozzle for
Fume Extractor**
Ref. FAE081

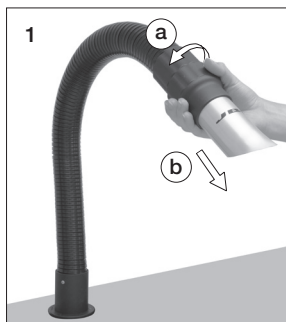


**Large Rectangular
Nozzle for Fume
Extractor**
Ref. FAE082



**Metal Round Nozzle
for Fume Extractor**
Ref. FAE083

Replacement



Hold the tube, turn the nozzle (a) and pull out to remove it (b).



A bayonet fitting system allows a proper connection between the flexible arm and the nozzle.



The nozzles are designed to work with the arm suspended and also supported on the work bench.

Nozzles

Weight:	120 g (0.26 lb) (FAE080 / 081 / 083) 188 g (0.41 lb) (FAE082)
Dimensions:	FAE080: 168 x 86 mm (6.6 x 3.4 in) FAE081: Ø114 x 127 mm (4.5 x 5.0 in) FAE082: 223 x 103 mm (8.8 x 4.0 in) FAE083: ØID 47 mm (ØID 1.9 in)

Complies with CE standards
ESD Safe

JBC

Warranty

JBC's 2 year warranty covers this equipment against all manufacturing defects, including the replacement of defective parts and labour. Warranty does not cover product wear or misuse. In order for the warranty to be valid, equipment must be returned, postage paid, to the dealer where it was purchased.

Please register your product warranty within 30 days of purchase in www.jbctools.com/productregistration.



This product should not be thrown in the garbage. In accordance with the European directive 2012/19/EU, electronic equipment at the end of their life must be collected and returned to an authorized recycling facility.



Manual in other languages available on our website

www.jbctools.com