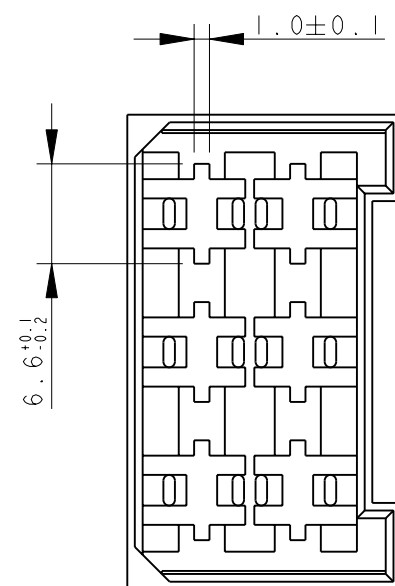
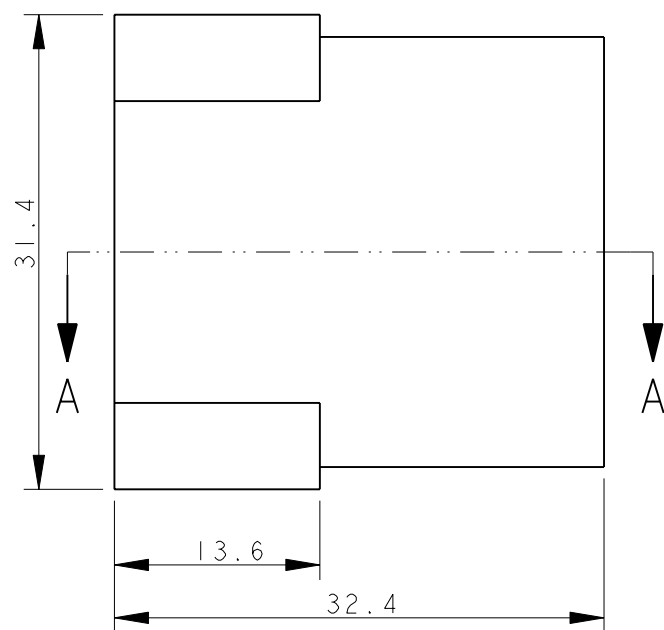
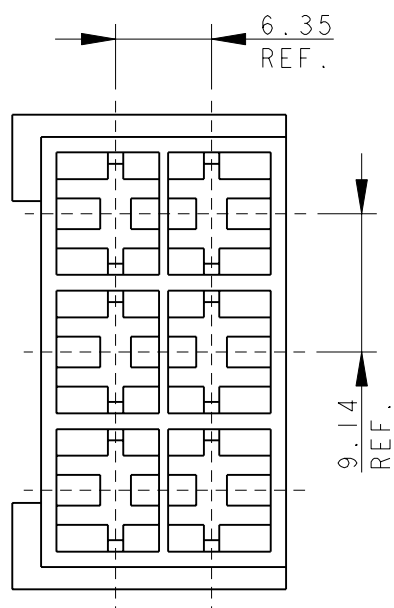
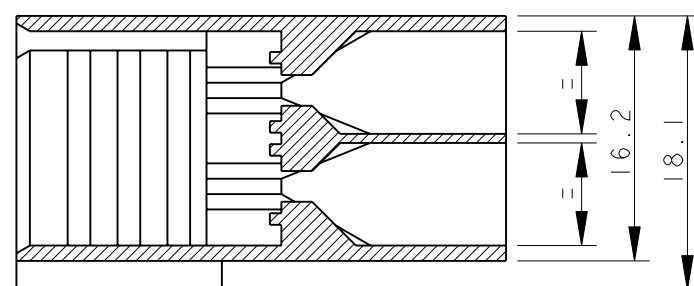


LOC	DIST	REVISIONS			
P	LTR	DESCRIPTION	DATE	DWN	APVD
1	-	AL	REDRAWN AND UPDATED, ECR-06-009404	02 MAY 2006	HY GT
		AL1	REVISED PER ECO-09-026346	26NOV09	KK AEG
		AL2	ECR-10-022530	14JUN11	KK HMR

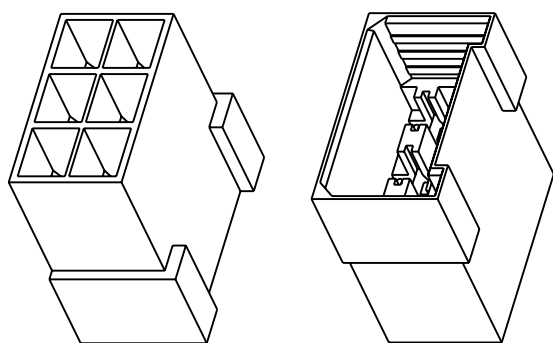


- ① PA 6.6 UNFILLED, UL 94-V2
- ② PA 6.6 UNFILLED UL 94 V0 & ACCORDING TO IEC 60335-1 NORM.
- ③ PA 6.6 20% GLASS FIBER FILLED, TECHNYL A 216 V20.
- ④ OBSOLETE PARTS: OBSOLETE CIS STREAMLINING PER D.RENAUD/D.SINISI

SECTION A - A



NOTE	COLOUR	MATERIAL	TE P/N	REV
④ OBSOLETE	NATURAL	①	4-180906-0	AK
	NATURAL	③	3-180906-0	AK
	NATURAL	②	2-180906-0	AL
④	ORANGE		0-180906-9	AK
	VIOLET		0-180906-8	AK
OBSOLETE	BROWN		0-180906-6	AK
	BLACK		0-180906-5	AK
④ OBSOLETE	YELLOW	①	0-180906-4	AK
	BLUE		0-180906-3	AK
	GREEN		0-180906-2	AK
	RED		0-180906-1	AK
	NATURAL		0-180906-0	AK



SCALE 1:1

THIS DRAWING IS A CONTROLLED DOCUMENT.

DWN H. YAALI 18APR2006

CHK H. YAALI

APVD G. TURCO

PRODUCT SPEC 108-20020

APPLICATION SPEC

WEIGHT

CUSTOMER DRAWING

DIMENSIONS:	TOLERANCES UNLESS OTHERWISE SPECIFIED:
mm	
0 PLC	±
1 PLC	±0.3
2 PLC	±
3 PLC	±
4 PLC	±
ANGLES	±2°
FINISH	-

MATERIAL SEE TABLE



FASTIN-FASTON* Connector, 6.3 mm series TAB HOUSING 6 WAY

SIZE A3 CAGE CODE - DRAWING NO C-180906 RESTRICTED TO -

SCALE 2:1 SHEET 1 OF 1 REV AL2