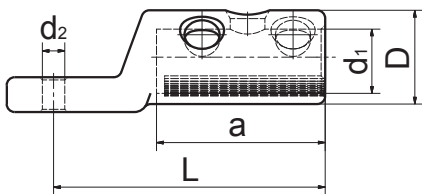


KSNP Shear off screw terminal

up to 6 kV



Symbol	Al conductor cross section [mm ²]					Cu [mm ²]				d ₁ [mm]	D [mm]	L [mm]	a [mm]
	rm	re	sm	se	class 5	rm	sm	re	class 5				
KSNP 8-1625 KSNP 10-1625 KSNP 12-1625	16-35	16-35	16-25	16-35	16-25	10-25	10-25	10-25	16-25	9	18	40	18
KSNP 8-2595 KSNP 10-2595 KSNP 12-2595	25-95	25-95	25-95	25-95	25-95	25-95	25-95	25-95	25-95	14,5	25	60	32,5
KSNP 8-25150 KSNP 10-25150 KSNP 12-25150	25-150	25-150	25-120	25-120	25-120	25-150	25-120	25-150	25-120	17,5	30	79	35
KSNP 8-120240 KSNP 10-120240 KSNP 12-120240 KSNP 16-120240	120-240	120-240	120-240	120-240	120-240	120-240	120-240	-	120-240	24	35	100	63