

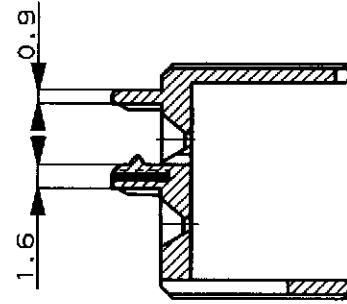
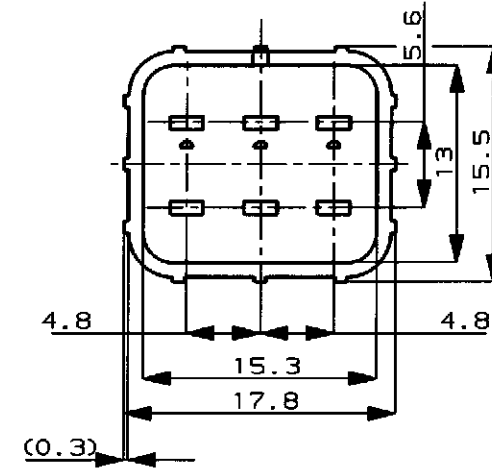
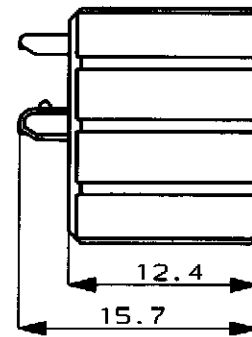
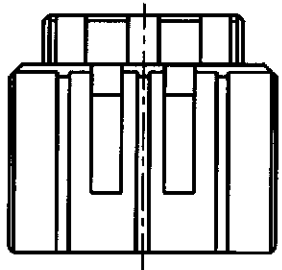
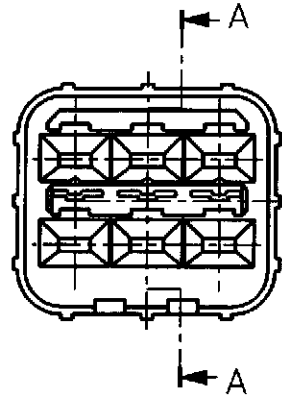
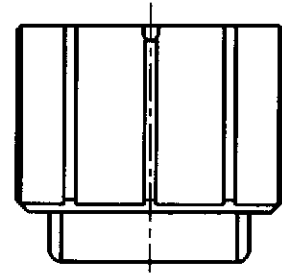
/auto2/new/u.d98-0026 u.customer/s.c-174265

NUMBER
C-174265



METRIC

DIMENSIONS IN MILLIMETERS. DO NOT SCALE PRINT



SECT
断面 A-A

注:

- 1. 本製品は、キャップハウジングP/N 174264 に装着される

NOTE:

- 1. TO BE MATES WITH CAP HOUSING P/N 174264

PBT	(NATURAL) 自然色	1-174265-1
PBT, 難燃材	(YELLOW) 黄	174265-7
MATERIAL 材料	HOUSING COLOR ハウジング色	P/N

© 19 BY AMP (Japan) LTD.
ALL RIGHTS RESERVED.
AMP PRODUCTS COVERED BY PATENTS
AND OR PATENTS PENDING

AMP AMP (JAPAN), LTD.
Tokyo, Japan

WIRE RANGE mm ² (AWG)		INSULATION DIA mm		NAME 6P. ECONOSEAL J-MARK II ⁺ CONNECTOR 6極 エコノシール J マーク II ⁺ DOUBLE LOCK PLATE FOR CAP HOUSING キャップ用ダブルロックプレート	
MATERIAL SEE TABLE 表参照		COLOR SEE TABLE 表参照		GENERAL TOLERANCE	
B	REVISED	FJ00-0601-98	AY/NB	3/11/89	0 < W < 10 : ±0.2
A	ADDED	FJ00-3794-95	MT AT	12/12/95	10 < W < 30 : ±0.25
0	作成	RELEASED J-9751	T.S.Y.M	5/26/89	30 < W < 100 : ±0.3
LTR	REVISION RECORD	変更	CHK	DATE	ANGLES : ±3°
DR. T. SAGAWA		DE. K. Oda		SIZE A3	
CHK. M. Matsushita		APP. M. Nozuchi		LOC J	
				NUMBER C-174265	
				SCALE 2-1	
				REV. B	
				SHEET 1 OF 1	

PRINT DIST

AMP-J
REV. 10/83
T.029188

CUSTOMER DRAWING