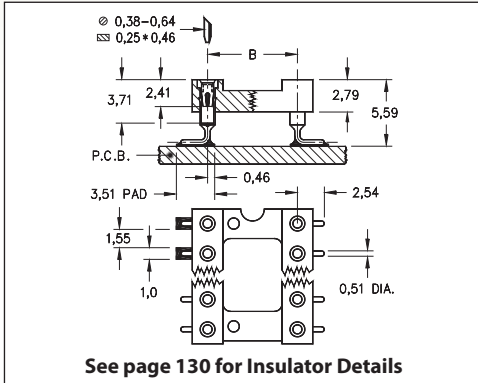
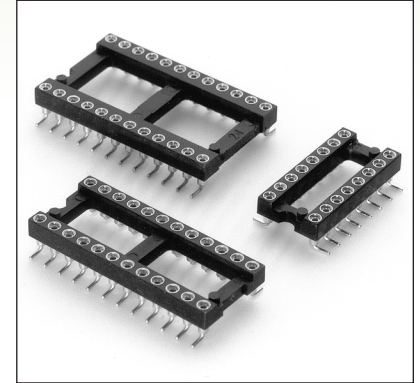


DUAL-IN-LINE SOCKETS

SERIES 110...105 • SURFACE MOUNT, GULL WING • OPEN FRAME



- Socket pins feature closed end construction eliminating any solder wicking problems
- Gull wing terminals provide maximum strength and permit easy visual inspection of solder joints. Series 110 uses Mill-Max #1005 pins. See page 166 for details
- Hi-Rel, 4-finger BeCu #30 contact is rated at 3 amps. See page 253 for details
- Insulators are high temperature thermoplastic, suitable for all soldering operations
- For Electrical, Mechanical and Environmental Data, see page 264 for details



Total number of pins				Quantity per tube	<h3>ORDERING INFORMATION</h3>											
	A	B	C													
10	12,6	5,08	7,6	40	110-XX-210-41-105000											
4	5,0	7,62	10,1	102	110-XX-304-41-105000											
6	7,6	7,62	10,1	67	110-XX-306-41-105000											
8	10,1	7,62	10,1	50	110-XX-308-41-105000											
10	12,6	7,62	10,1	40	110-XX-310-41-105000											
14	17,7	7,62	10,1	28	110-XX-314-41-105000											
16	20,3	7,62	10,1	25	110-XX-316-41-105000											
18	22,8	7,62	10,1	22	110-XX-318-41-105000											
20	25,3	7,62	10,1	20	110-XX-320-41-105000											
22	27,8	7,62	10,1	18	110-XX-322-41-105000											
24	30,4	7,62	10,1	16	110-XX-324-41-105000											
28	35,5	7,62	10,1	14	110-XX-328-41-105000											
20	25,4	10,16	12,7	20	110-XX-420-41-105000											
22	27,8	10,16	12,7	18	110-XX-422-41-105000											
24	30,4	10,16	12,7	16	110-XX-424-41-105000											
28	35,5	10,16	12,7	14	110-XX-428-41-105000											
32	40,6	10,16	12,7	12	110-XX-432-41-105000											
24	30,4	15,24	17,7	32	110-XX-624-41-105000											
28	35,5	15,24	17,7	28	110-XX-628-41-105000											
32	40,6	15,24	17,7	24	110-XX-632-41-105000											
36	45,7	15,24	17,7	22	110-XX-636-41-105000											
40	50,8	15,24	17,7	20	110-XX-640-41-105000											
42	53,3	15,24	17,7	18	110-XX-642-41-105000											
48	60,9	15,24	17,7	16	110-XX-648-41-105000											
50	63,5	15,24	17,7	16	110-XX-650-41-105000											
52	66,0	15,24	17,7	14	110-XX-652-41-105000											
50	63,5	22,86	25,3	16	110-XX-950-41-105000											
52	66,0	22,86	25,3	14	110-XX-952-41-105000											
64	81,2	22,86	25,3	12	110-XX-964-41-105000											
See page 264 for coplanarity information					<div style="border: 1px solid black; border-radius: 50%; padding: 5px; display: inline-block;"> XX=Plating Code See Below </div>						<div style="border: 1px solid black; padding: 5px; display: inline-block;"> RoHS-2 2011/65/EU </div>					
					SPECIFY PLATING CODE XX=								91	93		43
					Sleeve (Pin)								5,08µm Sn/Pb		5,08µm Sn/Pb	
Contact (Clip)						0,25µm Au		0,76µm Au		0,76µm Au						



Mouser Electronics

Authorized Distributor

Click to View Pricing, Inventory, Delivery & Lifecycle Information:

Mill-Max:

[110-43-964-41-105000](#) [110-43-952-41-105000](#) [110-43-950-41-105000](#) [110-43-652-41-105000](#) [110-43-648-41-105000](#) [110-43-642-41-105000](#) [110-43-636-41-105000](#) [110-43-632-41-105000](#) [110-43-624-41-105000](#) [110-43-432-41-105000](#) [110-43-428-41-105000](#) [110-43-424-41-105000](#) [110-43-422-41-105000](#) [110-43-420-41-105000](#) [110-43-328-41-105000](#) [110-43-324-41-105000](#) [110-43-322-41-105000](#) [110-43-320-41-105000](#) [110-43-304-41-105000](#) [110-93-424-41-105000](#) [110-93-328-41-105000](#) [110-93-308-41-105000](#) [110-93-628-41-105000](#) [110-93-964-41-105000](#) [110-93-952-41-105000](#) [110-93-950-41-105000](#) [110-93-652-41-105000](#) [110-93-650-41-105000](#) [110-93-648-41-105000](#) [110-93-642-41-105000](#) [110-93-636-41-105000](#) [110-93-632-41-105000](#) [110-93-624-41-105000](#) [110-93-432-41-105000](#) [110-93-428-41-105000](#) [110-93-422-41-105000](#) [110-93-420-41-105000](#) [110-93-324-41-105000](#) [110-93-322-41-105000](#) [110-93-320-41-105000](#) [110-93-310-41-105000](#) [110-93-306-41-105000](#) [110-93-304-41-105000](#) [110-93-210-41-105000](#) [110-91-306-41-105000](#) [110-91-308-41-105000](#) [110-91-648-41-105000](#) [110-91-650-41-105000](#) [110-91-632-41-105000](#) [110-91-636-41-105000](#) [110-91-428-41-105000](#) [110-91-420-41-105000](#) [110-91-318-41-105000](#) [110-91-328-41-105000](#) [110-91-652-41-105000](#) [110-91-640-41-105000](#) [110-91-304-41-105000](#) [110-91-642-41-105000](#) [110-91-628-41-105000](#) [110-91-210-41-105000](#) [110-91-310-41-105000](#) [110-91-324-41-105000](#) [110-91-424-41-105000](#) [110-91-950-41-105000](#) [110-91-322-41-105000](#) [110-91-964-41-105000](#) [110-91-320-41-105000](#) [110-91-314-41-105000](#) [110-91-624-41-105000](#) [110-91-422-41-105000](#) [110-91-432-41-105000](#) [110-91-952-41-105000](#)