

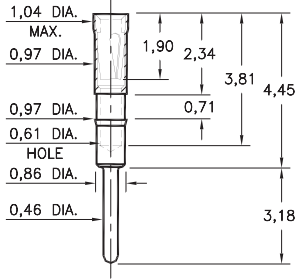
PIN RECEPTACLES

**FOR 0,38 - 0,46 DIAMETER PINS (#09 CONTACT)
FOR 0,38 - 0,51 DIAMETER PINS (#11 CONTACT)
AND 0,38 - 0,56 DIAMETER PINS (#21 CONTACT)**

0467

0467-0-15-XX-21-XX-04-0

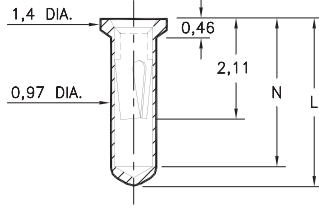
Press-fit in 0,94 mounting hole



0552

0552-X-15-XX-X1-XX-10-0

Solder mount in 1,02 min. mounting hole
Also available on 16mm wide carrier tape:
1,500 parts per 330mm reel
Order as: 0552-X-57-XX-X1-XX-10-0

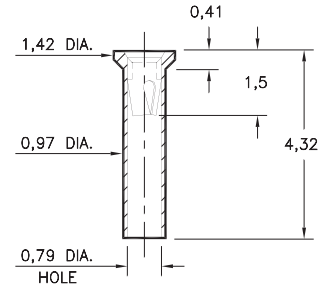


Basic Part Number	Length L	Depth N
0552-1	3,45	3,05
0552-2	4,32	3,81

5522

5522-0-15-XX-09-XX-10-0

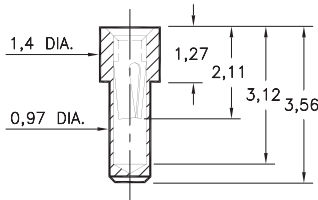
Solder mount in 1,02 min. mounting hole



0569

0569-0-15-XX-X1-XX-10-0

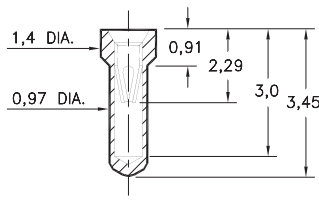
Solder mount in 1,02 min. mounting hole



6023

6023-0-15-XX-21-XX-10-0

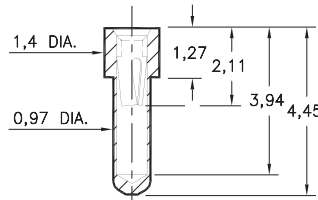
Solder mount in 1,02 min. mounting hole



6214

6214-0-15-XX-21-XX-10-0

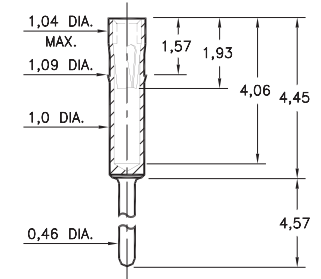
Solder mount in 1,02 min. mounting hole



2086

2086-0-15-XX-21-XX-04-0

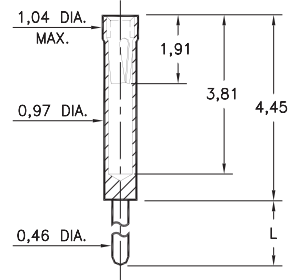
Press-fit in 1,02 mounting hole



0461

0461-X-15-XX-X1-XX-04-0

Solder mount in 0,51 min. mounting hole

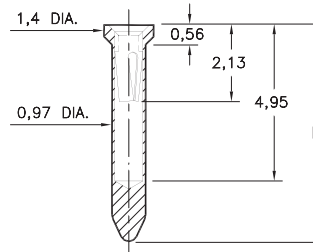


Basic Part Number	Length L
0461-0	10,16
0461-1	6,99
0461-2	4,57
0461-3	3,18
0461-4	1,52
0461-5	11,18

8579

8579-X-15-XX-X1-XX-10-0

Solder mount in 1,02 min. mounting hole
Also available on 24mm wide carrier tape:
1,200 parts per 330mm reel
Order as: 8579-0-57-XX-X1-XX-10-0



Basic Part Number	Length L
8579-0	5,94
8579-1	7,49

SPECIFICATIONS:

Shell Material: Brass Alloy 360, 1/2 Hard

Contact Material: Beryllium Copper Alloy 172, HT

Dimensions: Millimeters

Tolerances On: Lengths: ± 0,13

Diameters: ± 0,051

Angles: ± 2°



ORDER CODE: XXXX - X - 15 - XX - XX - XX - XX - 0

BASIC PART #

SPECIFY SHELL FINISH:

- ◆ **01** 5,08µm TIN/LEAD OVER NICKEL
- ◆ **80** 5,08µm TIN OVER NICKEL (RoHS)
- ◆ **15** 0,25µm GOLD OVER NICKEL (RoHS)

SPECIFY CONTACT FINISH:

- ◆ **02** 2,54µm TIN/LEAD OVER NICKEL
- ◆ **84** 2,54µm TIN OVER NICKEL (RoHS)
- ◆ **27** 0,76µm GOLD OVER NICKEL (RoHS)

SELECT CONTACT:

#09, #11 or #21 CONTACT (DATA ON PAGES 250 & 251)
(For alternate contact choices, see group A on page 248)



Mouser Electronics

Authorized Distributor

Click to View Pricing, Inventory, Delivery & Lifecycle Information:

Mill-Max:

[0552-2-15-80-21-27-10-0](#) [0552-2-15-80-11-84-10-0](#) [0552-2-15-80-11-27-10-0](#) [0552-1-15-80-21-27-10-0](#) [0467-0-15-80-21-84-04-0](#) [0461-5-15-15-21-27-04-0](#) [0461-0-15-80-11-27-04-0](#) [0552-2-15-01-21-02-10-0](#) [0552-1-15-01-21-02-10-0](#) [0552-1-15-01-21-27-10-0](#) [0467-0-15-01-21-27-04-0](#) [8579-1-15-80-11-27-10-0](#) [0461-3-15-15-11-27-04-0](#) [0461-0-15-80-11-84-04-0](#) [0461-1-15-80-21-27-04-0](#) [0461-4-15-01-21-02-04-0](#) [0461-3-15-01-11-27-04-0](#) [0461-2-15-80-21-84-04-0](#) [0461-5-15-80-11-27-04-0](#) [0461-3-15-80-11-84-04-0](#) [0461-3-15-01-11-02-04-0](#) [0461-5-15-01-21-27-04-0](#) [0461-1-15-80-21-84-04-0](#) [0461-0-15-01-21-27-04-0](#) [0461-4-15-80-21-27-04-0](#) [0461-5-15-01-11-27-04-0](#) [0461-4-15-80-11-27-04-0](#) [0461-4-15-01-11-27-04-0](#) [0461-4-15-80-21-84-04-0](#) [0461-3-15-80-21-84-04-0](#) [0461-2-15-01-11-27-04-0](#) [0461-4-15-01-21-27-04-0](#) [0461-2-15-01-11-02-04-0](#) [0461-5-15-01-21-02-04-0](#) [0461-2-15-01-21-02-04-0](#) [0461-2-15-80-11-84-04-0](#) [0461-1-15-80-11-27-04-0](#) [0461-4-15-01-11-02-04-0](#) [0461-4-15-15-21-27-04-0](#) [0461-0-15-80-21-84-04-0](#) [0461-5-15-80-11-84-04-0](#) [0461-1-15-01-11-02-04-0](#) [0461-3-15-80-21-27-04-0](#) [0461-3-15-01-21-27-04-0](#) [0461-5-15-80-21-27-04-0](#) [0461-3-15-80-11-27-04-0](#) [0461-5-15-80-21-84-04-0](#) [0461-5-15-15-11-27-04-0](#) [0461-4-15-80-11-84-04-0](#) [0461-1-15-80-11-84-04-0](#) [0461-5-15-01-11-02-04-0](#) [0461-1-15-01-11-27-04-0](#)