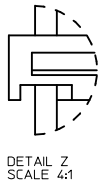
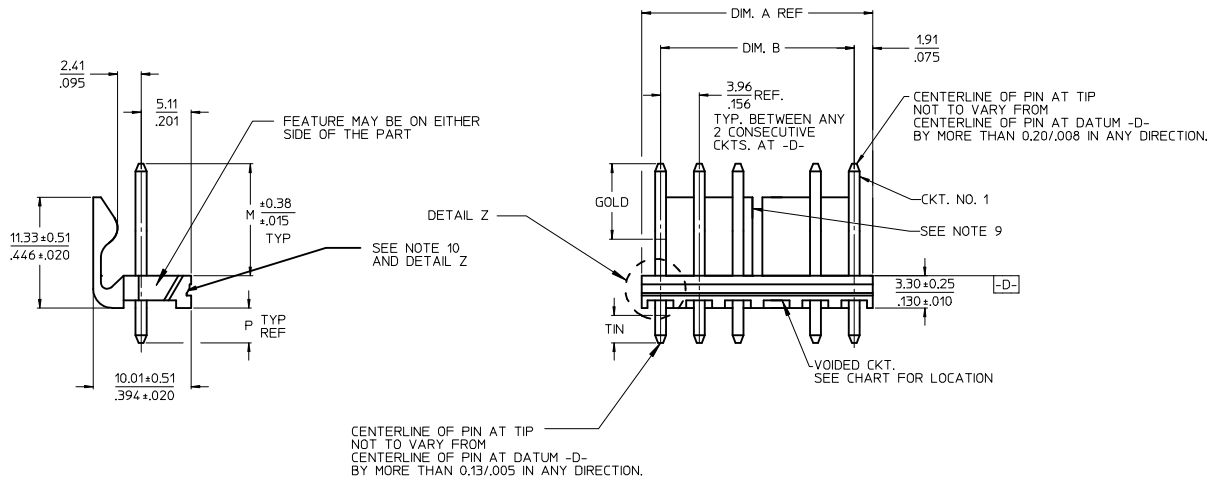
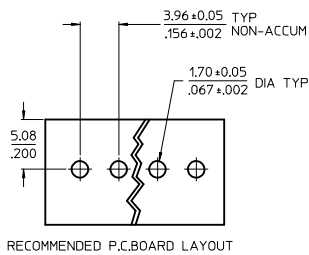


CKT	DIM. A	DIM. B	SLOT LOC BETWEEN CKTS
2	7.77 .306	3.96±0.05 .156±0.002	NONE
3	11.73 .462	7.92±0.08 .312±0.003	NONE
4	15.70 .618	11.89±0.08 .468±0.003	NONE
5	19.66 .774	15.85±0.10 .624±0.004	NONE
6	23.62 .930	19.81±0.10 .780±0.004	3 & 4
7	27.58 1.086	23.77±0.10 .936±0.004	4 & 5
8	31.55 1.242	27.74±0.13 1.092±0.005	4 & 5
9	35.51 1.398	31.70±0.13 1.248±0.005	5 & 6
10	39.47 1.554	35.66±0.13 1.404±0.005	5 & 6
11	43.43 1.710	39.62±0.15 1.560±0.006	6 & 7
12	47.40 1.866	43.59±0.15 1.716±0.006	4 & 5 8 & 9
13	51.36 2.022	47.55±0.15 1.872±0.006	4 & 5 9 & 10
14	55.32 2.178	51.51±0.18 2.028±0.007	5 & 6 9 & 10
15	59.28 2.334	55.47±0.18 2.184±0.007	5 & 6 10 & 11
16	63.25 2.490	59.44±0.18 2.340±0.007	5 & 6 11 & 12
17	67.21 2.646	63.40±0.20 2.496±0.008	6 & 7 11 & 12
18	71.17 2.802	67.36±0.20 2.652±0.008	6 & 7 12 & 13



NOTES:

- MATERIAL: HEADER-GLASS FILLED POLYESTER, 94V-0, MOLDED NATURAL (WHITE).
- FINISH: (102-TIN) OVERALL TIN: 0.00508/0.00200 MIN OVER 0.00254/0.00100 MIN COPPER.
(154-TIN) OVERALL TIN: 0.00254/0.00100 MIN OVER 0.00127/0.00050 MIN NICKEL.
(222-TIN) OVERALL MATTE TIN: 0.00254/0.00100 MIN OVER 0.00127/0.00050 MIN NICKEL.
*(208-15 GOLD) SELECT GOLD: 0.00038/0.00015 MIN, SELECT TIN: 0.00254/0.00100 MIN, OVERALL NICKEL UNDERPLATE: 0.00127/0.00050 MIN.
*(228-30 GOLD) SELECT GOLD: 0.00076/0.00030 MIN, SELECT TIN: 0.00254/0.00100 MIN, OVERALL NICKEL UNDERPLATE: 0.00127/0.00050 MIN.
(501-GOLD) OVERALL GOLD: 0.00051/0.00020 MIN OVER 0.00076/0.00030 MIN NICKEL.
- *THE PRIMARY SHIPPING CARTON WILL BE LABELED "COMPLIANT TO RoHS DIRECTIVE 2002/95/EC AND ELV ANNEX II OF DIRECTIVE 2000/53/EC". CARTONS WITHOUT THIS LABEL MAY CONTAIN PRODUCT WITH TIN-LEAD PLATING.
- PRODUCT SPECIFICATION AND PROCESS PARAMETERS: SEE PS-08-50.
- PACKAGING INFORMATION: SEE CHARTS.
- SOLDERABILITY: PER SMES-152.
- PIN PUSH-OUT FORCE: PRIOR TO SOLDERING, A 3 LB. MINIMUM FORCE (IN EITHER DIRECTION)
- PARTS ARE STACKABLE END TO END ON 3.96/.156 CENTERS.
- THIS PART CONFORMS TO CLASS B REQUIREMENTS OF COSMETIC SPECIFICATION PS-45499-002.
- SLOTS ON BACKWALL ARE BETWEEN CIRCUITS. SEE CHART FOR LOCATION.
- FEATURE MAY OR MAY NOT EXTEND ACROSS THE ENTIRE FACE OF THE PART "SEE DETAIL Z".



2-*	P13
1	P13
SHT	REV

ADD 41791-1107
EC NO: UCP2009-3418
DRWN:MK/PPR 2009/06/30
CHKD:SSOUSEK 2009/07/01
APPR:FSMITH 2009/07/01
REV
P13

QUALITY SYMBOLS
▽=0
▽=0

GENERAL TOLERANCES (UNLESS SPECIFIED)
4 PLACES ± --- ± ---
3 PLACES ± --- ± .010
2 PLACES ± 0.25 ± .015
1 PLACE ± 0.38 ± ---
ANGULAR ± 1/2°
DRAFT WHERE APPLICABLE MUST REMAIN WITHIN DIMENSIONS

DIMENSION STYLE	SCALE	DESIGN UNITS
MM/IN	2:1	INCH
DRAWN BY	DATE	TITLE
JSCHAFFER	11-07-03	KK 156 HEADER ASSEMBLY
CHECKED BY	DATE	FRICITION LOCK VERTICAL
KSAMIEC	11-10-03	SOLID BODY W/O PEGS
APPROVED BY	DATE	MATERIAL NO.
MARGULIS	11-17-03	SEE CHART
DOCUMENT NO.	SHEET NO.	
SDA-41791	1 OF *	

THIRD ANGLE PROJECTION	
MOLEX	MOLEX INCORPORATED
THIS DRAWING CONTAINS INFORMATION THAT IS PROPRIETARY TO MOLEX INCORPORATED AND SHOULD NOT BE USED WITHOUT WRITTEN PERMISSION	

OPTIONS	Group	A-41791-0002/0018	Group	A-41791-0019/0035	Group	A-41791-0036/0052	Group	A-41791-0059/0074
	Header No:	41790-0002/0018	Header No:	41790-0002/0018	Header No:	41790-0002/0018	Header No:	41790-0002/0018
	Pin No:	2161-94(102)	Pin No:	2161-94(501)	Pin No:	2161-94(102)	Pin No:	2161-94(102)
	Plating:	102 – TIN	Plating:	501 – GOLD	Plating:	102 – TIN	Plating:	102 – TIN
	Pin Length L	18.29 / .720	Pin Length L	18.29 / .720	Pin Length L	18.29 / .720	Pin Length L	18.29 / .720
	Mating M	11.43 / .450	Mating M	11.43 / .450	Mating M	11.43 / .450	Mating M	11.43 / .450
	Gold Loc G	N/A	Gold Loc G	OVERALL	Gold Loc G	N/A	Gold Loc G	N/A
	PC Tail P	3.56 / .140	PC Tail P	3.56 / .140	PC Tail P	3.56 / .140	PC Tail P	3.56 / .140
	Tin Loc T	OVERALL	Tin Loc T	N/A	Tin Loc T	OVERALL	Tin Loc T	OVERALL
	Voided Ckts	NONE	Voided Ckts	NONE	Voided Ckts	2	Voided Ckts	3
Pack Per	PK-41791-001	Pack Per	PK-41791-001	Pack Per	PK-41791-001	Pack Per	PK-41791-001	
Ckts	Material No	Engineer Number	Material No	Engineer Number	Material No	Engineer Number	Material No	Engineer Number
2	26-60-4020	A-41791-0002	26-61-4020	A-41791-0019	26-62-4020	A-41791-0036		
3	26-60-4030	A-41791-0003	26-61-4030	A-41791-0020	26-62-4030	A-41791-0037	26-62-4036	A-41791-0059
4	26-60-4040	A-41791-0004	26-61-4040	A-41791-0021	26-62-4040	A-41791-0038	26-62-4046	A-41791-0060
5	26-60-4050	A-41791-0005	26-61-4050	A-41791-0022	26-62-4050	A-41791-0039	26-62-4056	A-41791-0061
6	26-60-4060	A-41791-0006	26-61-4060	A-41791-0023	26-62-4060	A-41791-0040	26-62-4066	A-41791-0062
7	26-60-4070	A-41791-0007	26-61-4070	A-41791-0024	26-62-4070	A-41791-0041	26-62-4076	A-41791-0063
8	26-60-4080	A-41791-0008	26-61-4080	A-41791-0025	26-62-4080	A-41791-0042	26-62-4086	A-41791-0064
9	26-60-4090	A-41791-0009	26-61-4090	A-41791-0026	26-62-4090	A-41791-0043	26-62-4096	A-41791-0065
10	26-60-4100	A-41791-0010	26-61-4100	A-41791-0027	26-62-4100	A-41791-0044	26-62-4106	A-41791-0066
11	26-60-4110	A-41791-0011	26-61-4110	A-41791-0028	26-62-4110	A-41791-0045	26-62-4116	A-41791-0067
12	26-60-4120	A-41791-0012	26-61-4120	A-41791-0029	26-62-4120	A-41791-0046	26-62-4126	A-41791-0068
13	26-60-4130	A-41791-0013	26-61-4130	A-41791-0030	26-62-4130	A-41791-0047	26-62-4136	A-41791-0069
14	26-60-4140	A-41791-0014	26-61-4140	A-41791-0031	26-62-4140	A-41791-0048	26-62-4146	A-41791-0070
15	26-60-4150	A-41791-0015	26-61-4150	A-41791-0032	26-62-4150	A-41791-0049	26-62-4156	A-41791-0071
16	26-60-4160	A-41791-0016	26-61-4160	A-41791-0033	26-62-4160	A-41791-0050	26-62-4166	A-41791-0072
17	26-60-4170	A-41791-0017	26-61-4170	A-41791-0034	26-62-4170	A-41791-0051	26-62-4176	A-41791-0073
18	26-60-4180	A-41791-0018	26-61-4180	A-41791-0035	26-62-4180	A-41791-0052	26-62-4186	A-41791-0074

P13	REV:	ECR/ECN INFORMATION	TITLE:	KK 156 HEADER ASSEMBLY FRICTION LOCK VERTICAL SOLID BODY W/O PEGS	SHEET No.
		EC NO.: UCP2009-3118			- 2 -
		DATE: 7/1/2009			
DOCUMENT NUMBER:		CREATED / REVISED BY:	CHECKED BY:	APPROVED BY:	
SDA- 41791		MKIPPER	SSOUSEK	FSMITH	

OPTIONS	Group	A-41791-0086/0100	Group	A-41791-0309/0308	Group	A-41791-0464/0480	Group	A-41791-0583/0597
	Header No:	41790-0002/0018	Header No:	41790-0002/0018	Header No:	41790-0002/0018	Header No:	41790-0002/0018
	Pin No:	2161-94(102)	Pin No:	2161-94(501)	Pin No:	2161-1(102)	Pin No:	2161-94(102)
	Plating:	102 – TIN	Plating:	501 – GOLD	Plating:	102 – TIN	Plating:	102 – TIN
	Pin Length L	18.29 / .720	Pin Length L	18.29 / .720	Pin Length L	19.05 / .750	Pin Length L	18.29 / .720
	Mating M	11.43 / .450	Mating M	11.43 / .450	Mating M	11.43 / .450	Mating M	11.43 / .450
	Gold Loc G	N/A	Gold Loc G	OVERALL	Gold Loc G	N/A	Gold Loc G	N/A
	PC Tail P	3.56 / .140	PC Tail P	3.56 / .140	PC Tail P	4.32 / .170	PC Tail P	3.56 / .140
	Tin Loc T	OVERALL	Tin Loc T	N/A	Tin Loc T	OVERALL	Tin Loc T	OVERALL
	Voided Ckts	2, 4	Voided Ckts	2	Voided Ckts	NONE	Voided Ckts	4
Pack Per	PK-41791-001	Pack Per	PK-41791-001	Pack Per	PK-41791-001	Pack Per	PK-41791-001	
Ckts	Material No	Engineer Number	Material No	Engineer Number	Material No	Engineer Number	Material No	Engineer Number
2					26-60-4023	A-41791-0464		
3			26-63-4031	A-41791-0310	26-60-4033	A-41791-0465		
4	26-62-4041	A-41791-0086		A-41791-0311	26-60-4043	A-41791-0466	27-62-4049	A-41791-0583
5	26-62-4051	A-41791-0087	26-63-4051	A-41791-0312	26-60-4053	A-41791-0467	27-62-4059	A-41791-0584
6	26-62-4061	A-41791-0088	26-63-4061	A-41791-0313	26-60-4063	A-41791-0468	27-62-4069	A-41791-0585
7		A-41791-0089	26-63-4071	A-41791-0314	26-60-4073	A-41791-0469	27-62-4079	A-41791-0586
8		A-41791-0090		A-41791-0315	26-60-4083	A-41791-0470	27-62-4089	A-41791-0587
9		A-41791-0091		A-41791-0316	26-60-4093	A-41791-0471	27-62-4099	A-41791-0588
10	26-62-4101	A-41791-0092		A-41791-0317	26-60-4103	A-41791-0472	27-62-4109	A-41791-0589
11		A-41791-0093		A-41791-0318	26-60-4113	A-41791-0473	27-62-4119	A-41791-0590
12		A-41791-0094		A-41791-0319	26-60-4123	A-41791-0474	27-62-4129	A-41791-0591
13		A-41791-0095		A-41791-0320	26-60-4133	A-41791-0475	27-62-4139	A-41791-0592
14		A-41791-0096		A-41791-0321	26-60-4143	A-41791-0476	27-62-4149	A-41791-0593
15		A-41791-0097		A-41791-0322	26-60-4153	A-41791-0477	27-62-4159	A-41791-0594
16		A-41791-0098		A-41791-0323	26-60-4163	A-41791-0478	27-62-4169	A-41791-0595
17		A-41791-0099		A-41791-0324	26-60-4173	A-41791-0479	27-62-4179	A-41791-0596
18		A-41791-0100		A-41791-0325	26-60-4183	A-41791-0480	27-62-4189	A-41791-0597

REV: P13	<u>ECR/ECN INFORMATION</u>	TITLE: KK 156 HEADER ASSEMBLY FRICTION LOCK VERTICAL SOLID BODY W/O PEGS	<u>SHEET No.</u>
	<u>EC NO.:</u> UCP2009-3118		- 3 -
	<u>DATE:</u> 7/1/2009		
<u>DOCUMENT NUMBER:</u> SDA- 41791	<u>CREATED / REVISED BY:</u> MKIPPER	<u>CHECKED BY:</u> SSOUSEK	<u>APPROVED BY:</u> FSMITH

OPTIONS	Group	A-41791-0598/0609	Group	A-41791-0638/0653	Group	A-41791-0773/0785	Group	A-41791-0815/0831
	Header No:	41790-0002/0018	Header No:	41790-0002/0018	Header No:	41790-0006/0018	Header No:	41790-0002/0018
	Pin No:	2161-94(102)	Pin No:	2161-94(501)	Pin No:	2161-94(102)	Pin No:	2161-36(102)
	Plating:	102 – TIN	Plating:	501 – GOLD	Plating:	102-TIN	Plating:	102 – TIN
	Pin Length L	18.29 / .720	Pin Length L	18.29 / .720	Pin Length L	18.29/.720	Pin Length L	30.48 / 1.200
	Mating M	11.43 / .450	Mating M	11.43 / .450	Mating M	11.43/.450	Mating M	11.43 / .450
	Gold Loc G	N/A	Gold Loc G	OVERALL	Gold Loc G	N/A	Gold Loc G	N/A
	PC Tail P	3.56 / .140	PC Tail P	3.56 / .140	PC Tail P	3.56/.140	PC Tail P	15.75/ .620
	Tin Loc T	OVERALL	Tin Loc T	N/A	Tin Loc T	OVERALL	Tin Loc T	OVERALL
	Voided Ckts	7	Voided Ckts	3	Voided Ckts	3, 6	Voided Ckts	NONE
Pack Per	PK-41791-001	Pack Per	PK-41791-001	Pack Per	PK-41791-001	Pack Per	PK-41791-003	
Ckts	Material No	Engineer Number	Material No	Engineer Number	Item Number	Item Number		
2							41791-0815	
3			26-63-4032	A-41791-0638			41791-0816	
4			41791-0639	A-41791-0639			41791-0817	
5			26-63-4052	A-41791-0640			41791-0818	
6			26-63-4062	A-41791-0641			41791-0819	
7	41791-0598	A-41791-0598	41791-0642	A-41791-0642	41791-0774		41791-0820	
8	41791-0599	A-41791-0599	26-63-4082	A-41791-0643			41791-0821	
9	41791-0600	A-41791-0600	41791-0644	A-41791-0644			41791-0822	
10	41791-0601	A-41791-0601	41791-0645	A-41791-0645			41791-0823	
11	41791-0602	A-41791-0602	41791-0646	A-41791-0646			41791-0824	
12	41791-0603	A-41791-0603	41791-0647	A-41791-0647			41791-0825	
13	41791-0604	A-41791-0604	41791-0648	A-41791-0648			41791-0826	
14	41791-0605	A-41791-0605	41791-0649	A-41791-0649			41791-0827	
15	41791-0606	A-41791-0606	41791-0650	A-41791-0650			41791-0828	
16	41791-0607	A-41791-0607	41791-0651	A-41791-0651			41791-0829	
17	41791-0608	A-41791-0608	41791-0652	A-41791-0652			41791-0830	
18	41791-0609	A-41791-0609	41791-0653	A-41791-0653			41791-0831	

REV:	ECR/ECN INFORMATION	TITLE:	SHEET No.
P13	EC NO.: UCP2009-3118	KK 156 HEADER ASSEMBLY FRICTION LOCK VERTICAL SOLID BODY W/O PEGS	- 4 -
	DATE: 7/1/2009		
	DOCUMENT NUMBER: SDA- 41791		

OPTIONS	Group	A-41791-0832/0848	Group	A-41791-0849/0865	Group	A-41791-0883/0891	Group	A-41791-0892/0908
	Header No:	41790-0002/0018	Header No:	41790-0002/0018	Header No:	41790-0010/0018	Header No:	41790-0002/0018
	Pin No:	43294-0209	Pin No:	43294-0210	Pin No:	2161-94(102)	Pin No:	43294-0299
	Plating:	208 – 15 GOLD	Plating:	228 – 30 GOLD	Plating:	102 – TIN	Plating:	208 – 15 GOLD
	Pin Length L	18.29/. 720	Pin Length L	18.29/. 720	Pin Length L	18.29 / .720	Pin Length L	20.83 / .820
	Mating M	11.43/. 450	Mating M	11.43/. 450	Mating M	11.43 / .450	Mating M	11.43 / .450
	Gold Loc G	6.86/. 270	Gold Loc G	6.86/. 270	Gold Loc G	N/A	Gold Loc G	6.83/. 270
	PC Tail P	3.56/. 140	PC Tail P	3.56/. 140	PC Tail P	3.56 / .140	PC Tail P	6.10/ .240
	Tin Loc T	4.06/. 160	Tin Loc T	4.06/. 160	Tin Loc T	OVERALL	Tin Loc T	6.35/ .250
	Voided Ckts	NONE	Voided CKts	NONE	Voided Ckts	10	Voided Ckts	NONE
Pack Per	PK-41791-001	Pack Per	PK-41791-001	Pack Per	PK-41791-001	Pack Per	PK-41791-002	
Ckts	Material No	Engineer Number	Material No	Engineer Number	Item Number	Item Number		
2	41791-0832	A-41791-0832	41791-0849	A-41791-0849			41791-0892	
3	41791-0833	A-41791-0833	41791-0850	A-41791-0850			41791-0893	
4	41791-0834	A-41791-0834	41791-0851	A-41791-0851			41791-0894	
5	41791-0835	A-41791-0835	41791-0852	A-41791-0852			41791-0895	
6	41791-0836	A-41791-0836	41791-0853	A-41791-0853			41791-0896	
7	41791-0837	A-41791-0837	41791-0854	A-41791-0854			41791-0897	
8	41791-0838	A-41791-0838	41791-0855	A-41791-0855			41791-0898	
9	41791-0839	A-41791-0839	41791-0856	A-41791-0856			41791-0899	
10	41791-0840	A-41791-0840	41791-0857	A-41791-0857	41791-0883		41791-0900	
11	41791-0841	A-41791-0841	41791-0858	A-41791-0858	41791-0884		41791-0901	
12	41791-0842	A-41791-0842	41791-0859	A-41791-0859	41791-0885		41791-0902	
13	41791-0843	A-41791-0843	41791-0860	A-41791-0860	41791-0886		41791-0903	
14	41791-0844	A-41791-0844	41791-0861	A-41791-0861	41791-0887		41791-0904	
15	41791-0845	A-41791-0845	41791-0862	A-41791-0862	41791-0888		41791-0905	
16	41791-0846	A-41791-0846	41791-0863	A-41791-0863	41791-0889		41791-0906	
17	41791-0847	A-41791-0847	41791-0864	A-41791-0864	41791-0890		41791-0907	
18	41791-0848	A-41791-0848	41791-0865	A-41791-0865	41791-0891		41791-0908	

REV:	ECR/ECN INFORMATION	TITLE:	SHEET No.
P13	EC NO.: UCP2009-3118	KK 156 HEADER ASSEMBLY FRICTION LOCK VERTICAL SOLID BODY W/O PEGS	- 5 -
	DATE: 7/1/2009		
DOCUMENT NUMBER:	CREATED / REVISED BY:	CHECKED BY:	APPROVED BY:
SDA- 41791	MKIPPER	SSOUSEK	FSMITH

OPTIONS	Group	A-41791-0922/0933	Group	41791-0934/0948	Group	41791-0966/0976	Group	41791-0977/0993
	Header No:	41790-0007/0018	Header No:	41790-0004/0018	Header No:	41790-0007/0018	Header No:	41790-0002/0018
	Pin No:	2161-94(102)	Pin No:	43294-0209	Pin No:	2161-94(102)	Pin No:	43294-0345
	Plating:	102 – TIN	Plating:	208 – 15 GOLD	Plating:	102 – TIN	Plating:	228 – 30 GOLD
	Pin Length L	18.29 / .720	Pin Length L	18.29/. 720	Pin Length L	18.29/. 720	Pin Length L	22.10/. 870
	Mating M	11.43 / .450	Mating M	11.43 / .450	Mating M	11.43/. 450	Mating M	11.43/. 450
	Gold Loc G	N/A	Gold Loc G	6.86/ .270	Gold Loc G	N/A	Gold Loc G	10.02/. 400
	PC Tail P	3.56 / .140	PC Tail P	3.56/. 140	PC Tail P	3.56/. 140	PC Tail P	7.37/. 290
	Tin Loc T	OVERALL	Tin Loc T	4.06/. 160	Tin Loc T	OVERALL	Tin Loc T	5.08/. 200
	Voided Ckts	5, 7	Voided Ckts	4	Voided Ckts	3, 7, 8	Voided Ckts	None
Pack Per	PK-41791-001	Pack Per	PK-41791-001	Pack Per	PK-41791-001	Pack Per	PK-41791-002	
Ckts	Item Number		Item Number		Item Number		Item Number	
2							41791-0977	
3							41791-0978	
4			41791-0934				41791-0979	
5			41791-0935				41791-0980	
6			41791-0936				41791-0981	
7	41791-0922		41791-0937				41791-0982	
8	41791-0923		41791-0938		41791-0966		41791-0983	
9	41791-0924		41791-0939		41791-0967		41791-0984	
10	41791-0925		41791-0940		41791-0968		41791-0985	
11	41791-0926		41791-0941		41791-0969		41791-0986	
12	41791-0927		41791-0942		41791-0970		41791-0987	
13	41791-0928		41791-0943		41791-0971		41791-0988	
14	41791-0929		41791-0944		41791-0972		41791-0989	
15	41791-0930		41791-0945		41791-0973		41791-0990	
16	41791-0931		41791-0946		41791-0974		41791-0991	
17	41791-0932		41791-0947		41791-0975		41791-0992	
18	41791-0933		41791-0948		41791-0976		41791-0993	

REV:	ECR/ECN INFORMATION	TITLE:	SHEET No.
P13	EC NO.: UCP2009-3118	KK 156 HEADER ASSEMBLY FRICTION LOCK VERTICAL SOLID BODY W/O PEGS	- 6 -
	DATE: 7/1/2009		
	DOCUMENT NUMBER: SDA- 41791		

OPTIONS	Group	41791-0994/1002	Group	A-41791-1036 / 1048	Group	A-41791-1049/1062	Group	A-41791-1063/1071
	Header No:	41790-0010/0018	Header No:	41790-0006 / 0018	Header No:	41790-0005/0018	Header No:	41790-0010/0018
	Pin No:	43294-0209	Pin No:	2161-94(102)	Pin No:	2161-94(102)	Pin No:	2161-94(102)
	Plating:	208 – 15 GOLD	Plating:	102 – TIN	Plating:	102 – TIN	Plating:	102 – TIN
	Pin Length L	18.29/.720	Pin Length L	18.29 / .720	Pin Length L	18.29 / .720	Pin Length L	18.29 / .720
	Mating M	11.43 / .450	Mating M	11.43 / .450	Mating M	11.43 / .450	Mating M	11.43 / .450
	Gold Loc G	6.86/ .270	Gold Loc G	N/A	Gold Loc G	N/A	Gold Loc G	N/A
	PC Tail P	3.56/.140	PC Tail P	3.56 / .140	PC Tail P	3.56 / .140	PC Tail P	3.56 / .140
	Tin Loc T	4.06/.160	Tin Loc T	OVERALL	Tin Loc T	OVERALL	Tin Loc T	OVERALL
	Voided Ckts	3, 4, 5, 8, 9, 10	Voided Ckts	4, 6	Voided Ckts	2, 5	Voided Ckts	5, 10
Pack Per	PK-41791-001	Pack Per	PK-41791-001	Pack Per	PK-41791-001	Pack Per	PK-41791-001	
Ckts	Item Number	Material No	Engineer Number	Item Number	Item Number			
2								
3								
4								
5								
6			A-41791-1036					
7		41791-1037	A-41791-1037	41791-1051				
8			A-41791-1038					
9			A-41791-1039					
10	41791-0994		A-41791-1040					
11	41791-0995		A-41791-1041		41791-1064			
12	41791-0996		A-41791-1042					
13	41791-0997		A-41791-1043					
14	41791-0998		A-41791-1044					
15	41791-0999		A-41791-1045					
16	41791-1000		A-41791-1046					
17	41791-1001		A-41791-1047					
18	41791-1002		A-41791-1048					

REV: P13	ECR/ECN INFORMATION EC NO.: UCP2009-3118 DATE: 7/1/2009	TITLE: KK 156 HEADER ASSEMBLY FRICTION LOCK VERTICAL SOLID BODY W/O PEGS	SHEET No. - 7 -
DOCUMENT NUMBER: SDA- 41791	CREATED / REVISED BY: MKIPPER	CHECKED BY: SSOUSEK	APPROVED BY: FSMITH

OPTIONS	Group	A-41791-1074/1088	Group	A-41791-1089/1105	Group	A-41791-1107		
	Header No:	41790-0004/0018	Header No:	41790-0002/0018	Header No:	41790-0006/0018		
	Pin No:	2161-94(501)	Pin No:	43294-0212	Pin No:	2161-94(154)		
	Plating:	501 – GOLD	Plating:	222 – TIN	Plating:	154 – TIN		
	Pin Length L	18.29 / .720	Pin Length L	18.29 / .720	Pin Length L	18.29 / .720		
	Mating M	11.43 / .450	Mating M	11.43 / .450	Mating M	11.43 / .450		
	Gold Loc G	OVERALL	Gold Loc G	N/A	Gold Loc G	N/A		
	PC Tail P	3.56 / .140	PC Tail P	3.56 / .140	PC Tail P	3.56 / .140		
	Tin Loc T	N/A	Tin Loc T	OVERALL	Tin Loc T	OVERALL		
	Voided Ckts	2, 3, 4	Voided Ckts	NONE	Voided Ckts	6		
Pack Per	PK-41791-001	Pack Per	PK-41791-001	Pack Per	PK-41791-001			
Ckts	Item Number		Item Number		Item Number			
2			41791-1089					
3			41791-1090					
4			41791-1091					
5	41791-1075							
6			41791-1093					
7					41791-1107			
8			41791-1095					
9			41791-1096					
10			41791-1097					
11			41791-1098					
12			41791-1099					
13								
14								
15								
16			41791-1103					
17								
18			41791-1105					

REV:	ECR/ECN INFORMATION	TITLE:	SHEET No.
P13	EC NO.: UCP2009-3118	KK 156 HEADER ASSEMBLY FRICTION LOCK VERTICAL SOLID BODY W/O PEGS	- 8 -
	DATE: 7/1/2009		
DOCUMENT NUMBER:	CREATED / REVISED BY:	CHECKED BY:	APPROVED BY:
SDA- 41791	MKIPPER	SSOUSEK	FSMITH