

AVAILABLE THROUGH DISTRIBUTION



BOURNS®

Features

- Surface Mount / Single Turn / Cermet Industrial / Sealed
- Compatible with surface mount manufacturing processes
- Compatible with popular vacuum pick-and-place equipment

- J-hook, gull-wing and pinned configurations
- Side adjust available
- Meets EIA/EIAJ/IPC/VRCI SMD standard trimmer designs

3314 - 4mm Square Trimming Potentiometer

Electrical Characteristics

Standard Resistance Range10 ohms to 2 megohms
 (see standard resistance table)
 Resistance Tolerance±20% std.
 (tighter tolerance available)
 End Resistance.....1% or 2 ohms max.
 (whichever is greater)
 Contact Resistance Variation1% or 3 ohms
 Resolution.....Infinite
 Insulation Resistance500 vdc.
 100 megohms min.
 Dielectric Strength
 Sea Level.....500 vac (1 minute)
 Adjustment Angle210° nom.

Environmental Characteristics

Soldering Heat260°C, 10 seconds, TRS ±1%
 Power Rating (300 volts max.)
 70°C.....0.25 watt
 125°C.....0 watt
 Temperature Range.....-55°C to +125°C
 Temperature Coefficient±100ppm/°C
 Humidity90-98% RH,
 10 cycles, 240 hours
 Vibration20G TRS ±1%; VRS ±1%
 Shock.....100G TRS ±1%; VRS ±1%
 Load Life
(@ 70°C Rated Power 1000 Hours)
 TRS ±3%
 Rotational Life100 cycles
 TRS ±3%
 Thermal Shock.....5 cycles
 TRS ±2%; VRS ±1%

Physical Characteristics

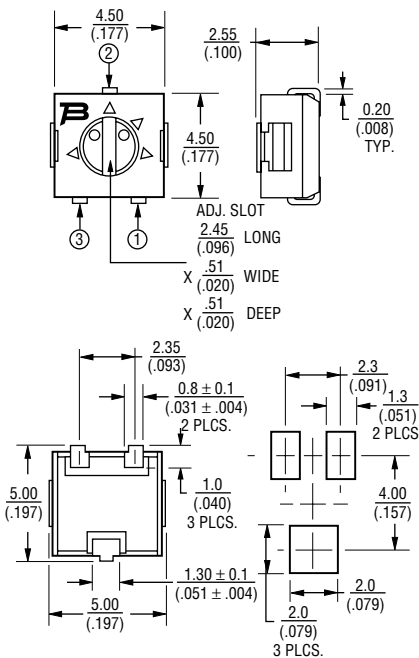
Mechanical Angle240° nom.
 Torque180g-cm typical
 Stop Strength.....300g-cm typical
 Pushover Strength (Z Style)
2 kilograms (4.4 lbs.) minimum
 WeightApproximately 0.01 oz.
 MarkingManufacturer's code,
 resistance code and date code
 WiperPositioned at 50% nominal
 Flammability.....U.L. 94V-0
 Standard Packaging
 J, G and R500 pcs./7" reel
 Z200 pcs./7" reel
 H50 pcs./tube
 Adjustment ToolH-90

TOLERANCES: ± 0.25 (.010) EXCEPT WHERE NOTED

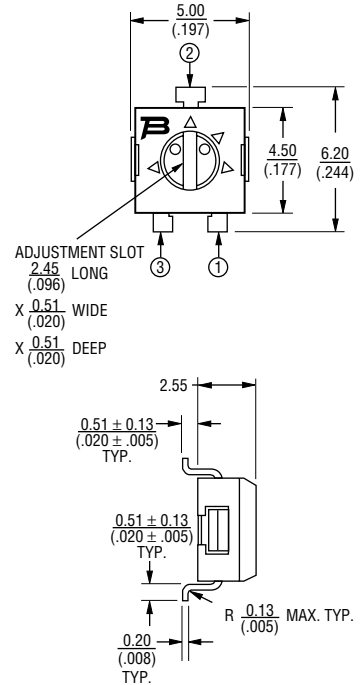
DIMENSIONS ARE: $\frac{\text{METRIC}}{\text{(INCHES)}}$

Product Dimensions

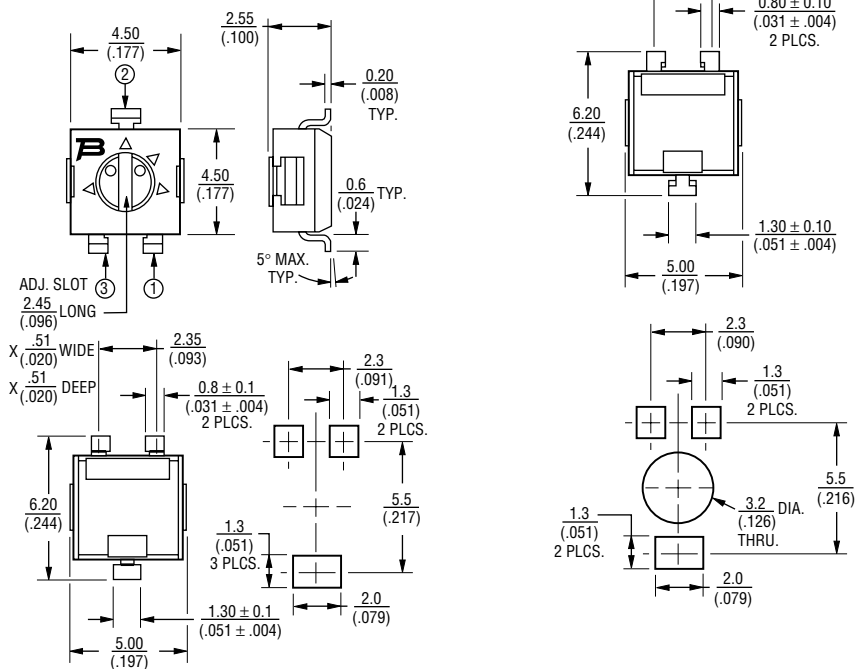
3314J-1



3314R-1



3314G-1



Additional Features

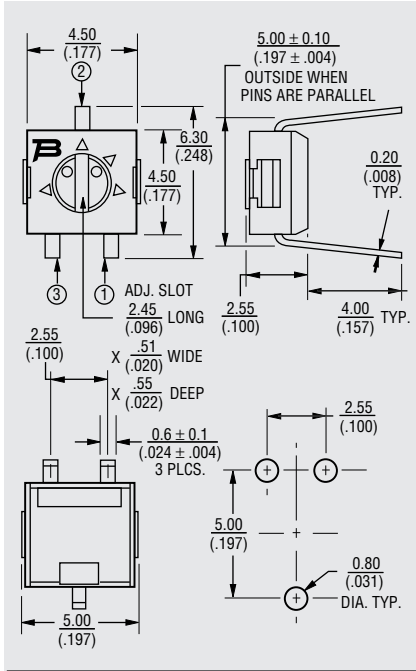
- Model 3314 has been approved for use by DESC on drawings 88039 (3314J) and 90027 (3314G)

3314 - 4mm Square Trimming Potentiometer

BOURNS®

Product Dimensions

3314H-1



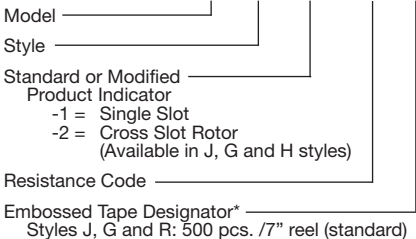
TOLERANCES: ± 0.25 (.010) EXCEPT WHERE NOTED

DIMENSIONS ARE: METRIC (INCHES)

SHADED AREAS TYPICALLY NOT STOCKED BY DISTRIBUTORS AND NOT RECOMMENDED FOR NEW DESIGNS.

How To Order - J, G, H and R Styles

3314 J - 1 - 502 E

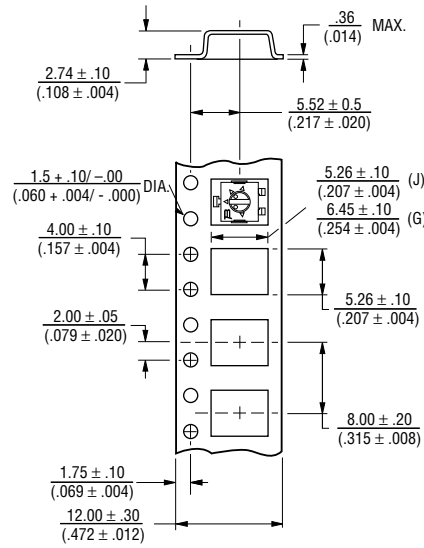


*Style H is available in tube packaging only.
Consult factory for other available options.

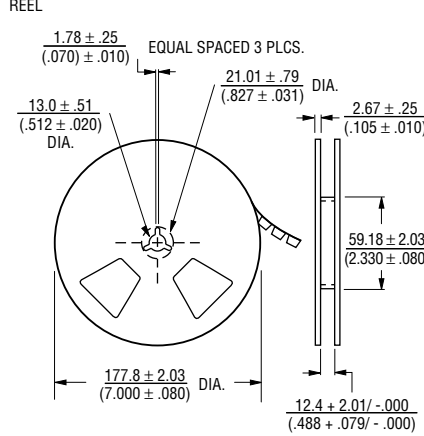
Packaging Specifications - J, G and R Styles

(J, G Styles)

TAPE



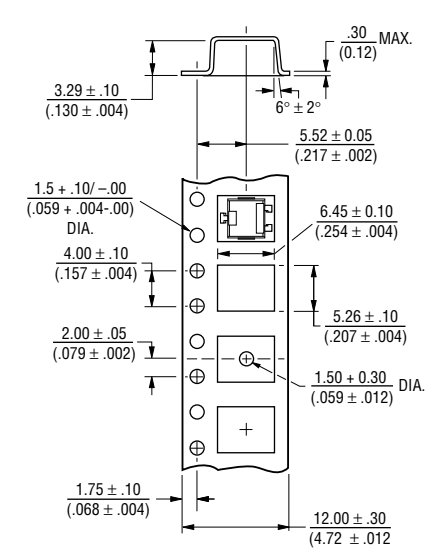
REEL



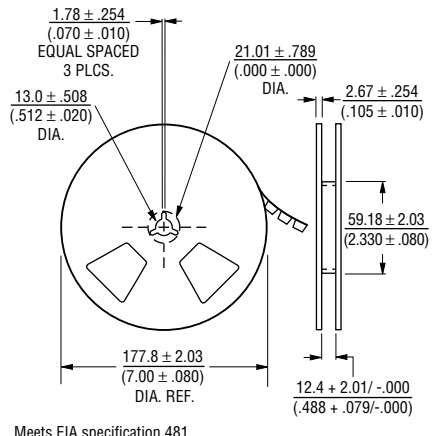
Meets EIA specification 481.

(R Style)

TAPE



REEL



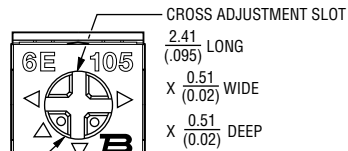
Meets EIA specification 481.

3314 - 4mm Square Trimming Potentiometer

BOURNS®

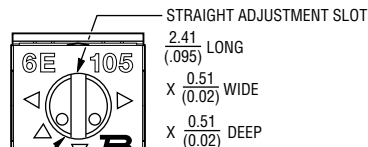
Product Dimensions

3314Z-1-(RC) E (Cross Slot)

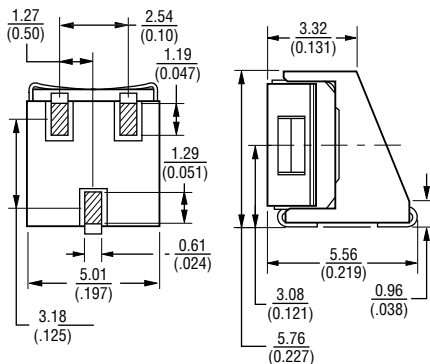


ROTOR POSITIONED AS SHOWN
WITHIN $\pm 22^\circ$ OF CENTERLINE
OF TERMINAL 2

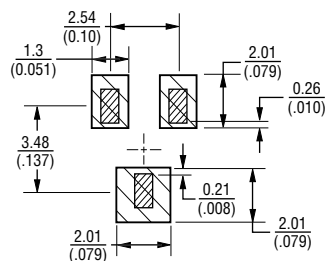
3314Z-GA4-(RC) E (Straight Slot)



ROTOR POSITIONED AS SHOWN
WITHIN $\pm 22^\circ$ OF CENTERLINE
OF TERMINAL 2

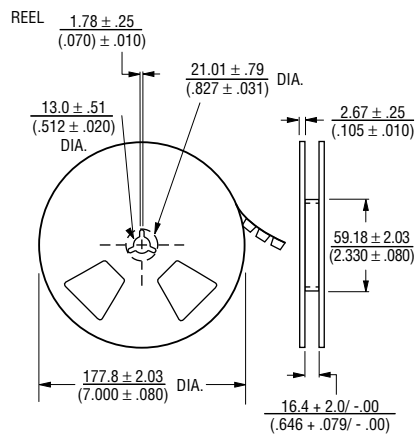
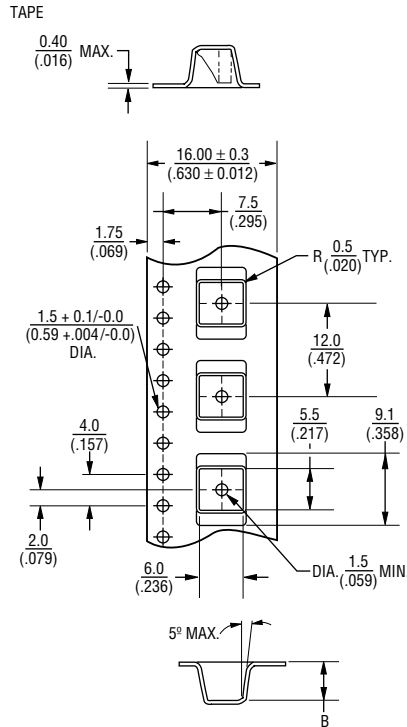


RECOMMENDED PCB LAYOUT



Packaging Specifications

(Z Style)



TOLERANCES: ± 0.25 (.010) EXCEPT WHERE NOTED

DIMENSIONS ARE: $\frac{\text{METRIC}}{\text{(INCHES)}}$

How To Order - Z Style

3314 Z - 1 - 502 E

Model _____
Style _____
Standard or Modified _____
Product Indicator _____
-1 = Cross Slot Rotor
-GA4 = Straight Slot
Resistance Code _____
Embossed Tape Designator _____
Style Z: 200 pcs. /7" reel (standard)

Standard Resistance Table

| Resistance (Ohms) | Resistance Code |
|-------------------|-----------------|
| 10 | 100 |
| 20 | 200 |
| 50 | 500 |
| 100 | 101 |
| 200 | 201 |
| 500 | 501 |
| 1,000 | 102 |
| 2,000 | 202 |
| 5,000 | 502 |
| 10,000 | 103 |
| 20,000 | 203 |
| 50,000 | 503 |
| 100,000 | 104 |
| 200,000 | 204 |
| 250,000 | 254 |
| 500,000 | 504 |
| 1,000,000 | 105 |
| 2,000,000 | 205 |

Popular values listed in boldface. Special resistances available.

SHADED AREAS TYPICALLY NOT STOCKED BY DISTRIBUTORS AND NOT RECOMMENDED FOR NEW DESIGNS.