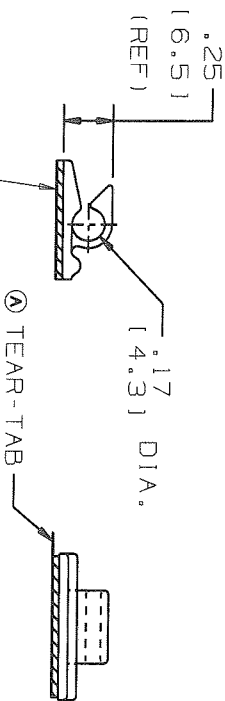
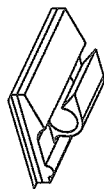
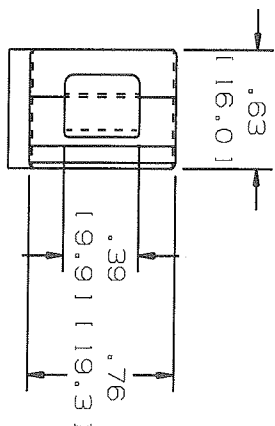


THIS COPY IS PROVIDED ON A RESTRICTED BASIS AND IS NOT TO BE USED IN ANY WAY DETRIMENTAL TO THE INTERESTS OF PANDUIT CORP.

NO WARRANTY, EXPRESSED OR IMPLIED, IS MADE BY PANDUIT WITH RESPECT TO ADHESIVE BOND PERFORMANCE. AMONG OTHER THINGS, THE CONDITIONS UNDER WHICH THESE MOUNTS MAY BE APPLIED, AND/OR THE SURFACE TO WHICH THEY MAY BE APPLIED, ARE BEYOND PANDUIT'S CONTROL.



PANDUIT PART NUMBER*	MAXIMUM CABLE DIA. in. (mm)	WEIGHT lbs. (g)/100pcs
ACC19-A	.19 (4.8)	.17 (77)
ACC19-AT	.19 (4.8)	.17 (77)
ACC19-AV	.19 (4.8)	.17 (77)

- TO APPLY ADHESIVE CORD CLIP:
1. REMOVE PROTECTIVE LINER
 2. PLACE IN DESIRED LOCATION
 3. APPLY PRESSURE TO TOP OF CORD CLIP

ADHESIVE BACKING:
 PRESSURE SENSITIVE FOAM TAPE, .04(1.0) THICK, WITH RUBBER (-A)ACRYLIC (-AT) OR HIGH BOND ACRYLIC (-AV) ADHESIVE AND PROTECTIVE LINER. LINER TO EXTEND BEYOND EDGE TO FORM TEAR-TAB. MOUNT IS DESIGNED TO SUPPORT .20 lbs. (91g) MAX. WEIGHT ON A CLEAN, DRY, SMOOTH SURFACE.

NOTES:
 * 1) SEE CURRENT PRICE SHEET FOR PART NUMBER SUFFIX DESIGNATION FOR PACKAGE SIZE AND PART COLOR.

(DIMENSIONS IN PARENTHESSES ARE METRIC)

CDG FILES/REV/LAYERS G03597BC_DC_GB023966/00B

PANDUIT CORP. TINLEY PARK, ILLINOIS

ADHESIVE CORD CLIP
 ACC19-A, ACC19-AT, ACC19-AV

UNLESS OTHERWISE SPECIFIED, DIMENSIONAL TOLERANCES ARE:
 (X) ± N/A (XXX) ± N/A
 (XX) ±.02 (1.5) ANGLES ± 5°

UNLESS OTHERWISE SPECIFIED, ALL DIMENSIONS ARE GIVEN IN INCHES, THIRD ANGLE PROJECTION.

REV	DATE	BY	CHK	DESCRIPTION	ECN	R	CUST	SUP
00B	11-6-09	TMSA	SMY	ADDED PART NUMBER ACC19-AV REVISIED TO TEACENTER NAMING CONVENTION	GB023966			
2	6-5-03	MSAD		MODIFIED BASE LENGTH AND WIDTH DIMENSIONS	GB023966	2		
1	7-15-99	CGSM		REPLACED ISO VIEW	GB023966	1		
R	2-23-99	CGSM		RE-DRAWN FROM DWG SS-7173	GB023966	R		

DATE	DRW'D	MAT'L:	SCALE	DWGING NO.	DWG SIZE
2-23-99	KLW	NYLON 6/6	FULL	GB023966	A