

Encapsulate Three-terminal Voltage Regulators

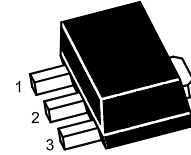
Three-terminal negative voltage regulator

FEATURES

- Maximum output current
 $I_{OM}: 0.1\text{ A}$
- Output voltage
 $V_O: -8\text{ V}$
- Continuous total dissipation
 $P_D: 0.5\text{ W}$

SOT-89 Plastic Package

1. GND
2. IN
3. OUT



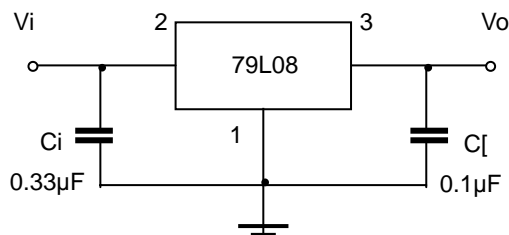
ABSOLUTE MAXIMUM RATINGS (Operating temperature range applies unless otherwise specified)

Parameter	Symbol	Value	Unit
Input Voltage	V_I	-30	V
Operating Junction Temperature Range	T_{OPR}	0~+150	°C
Storage Temperature Range	T_{STG}	-55~+150	°C

ELECTRICAL CHARACTERISTICS AT SPECIFIED VIRTUAL JUNCTION TEMPERATURE ($V_I=-14\text{V}, I_o=40\text{mA}, C_i=0.33\mu\text{F}, C_o=0.1\mu\text{F}$, unless otherwise specified)

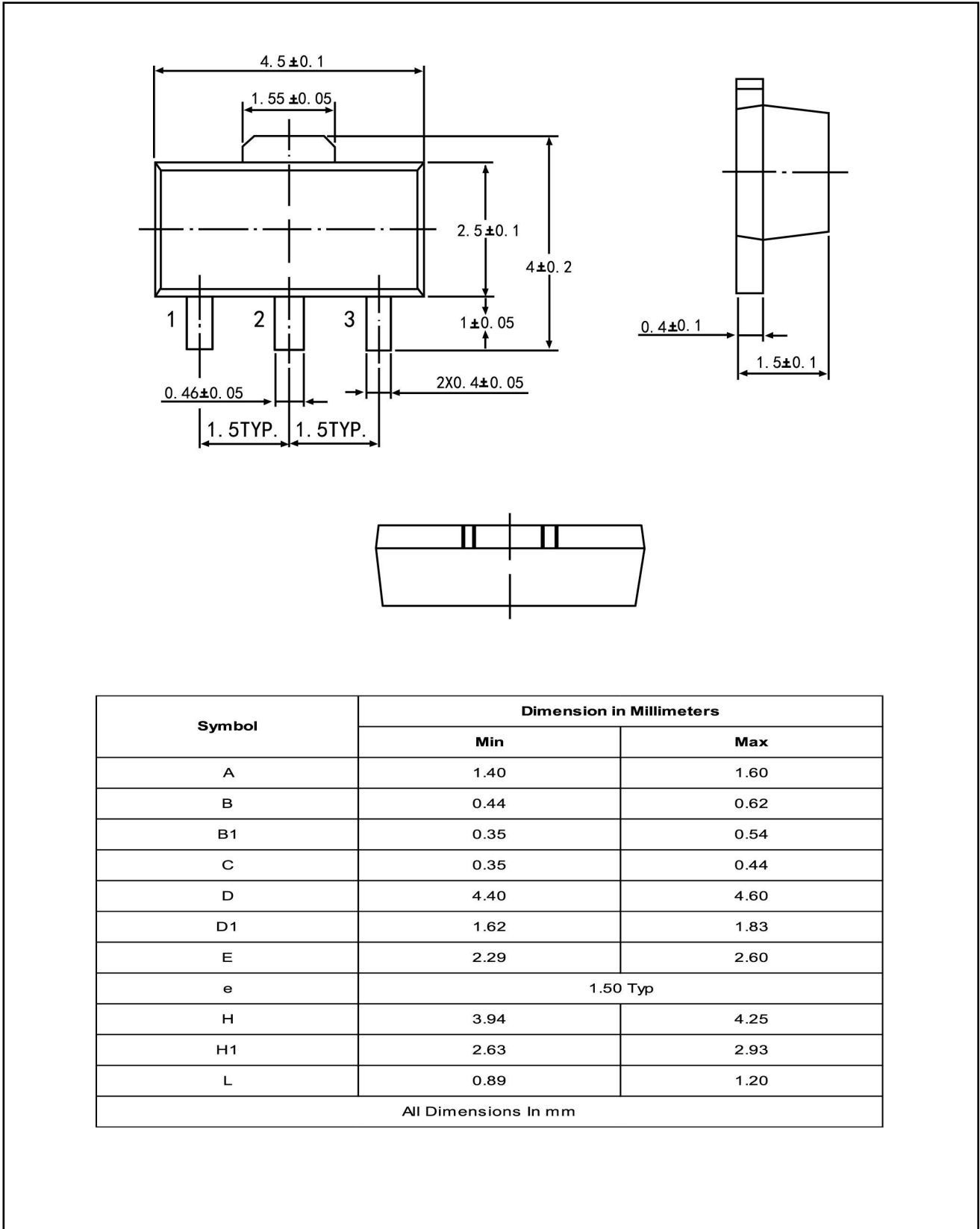
Parameter	Symbol	Test conditions	Mj	b	Tnd	MU	I bjh
Output Voltage	V_o		25°C	-7.7	-8.0	-8.3			V
		$-10.5\text{V} \leq V_I \leq -23\text{V}, I_o=1\text{mA} \sim 40\text{mA}$	0-125°C	-7.6	-8.0	-8.4			V
		$I_o=1\text{mA} \sim 70\text{mA}$		-7.6	-8.0	-8.4			V
Load Regulation	ΔV_o	$I_o=1\text{mA} \sim 100\text{mA}$	25°C		30	100			mV
		$I_o=1\text{mA} \sim 40\text{mA}$	25°C		15	50			mV
Line Regulation	ΔV_o	$-10.5\text{V} \leq V_I \leq -23\text{V}$	25°C		42	200			mV
		$-11\text{V} \leq V_I \leq -23\text{V}$	25°C		36	150			mV
Quiescent Current	I_q		25°C		4	6			mA
Quiescent Current Change	ΔI_q	$-11\text{V} \leq V_I \leq -23\text{V}$	0-125°C			1.5			mA
	ΔI_q	$1\text{mA} \leq I_o \leq 40\text{mA}$	0-125°C			0.1			mA
Output Noise Voltage	V_N	$10\text{Hz} \leq f \leq 100\text{KHz}$	25°C		54				uV
Ripple Rejection	RR	$-11\text{V} \leq V_I \leq -21\text{V}, f=120\text{Hz}$	0-125°C	37	46				dB
Dropout Voltage	V_d		25°C		1.7				V

TYPICAL APPLICATION



Note: Bypass capacitors are recommended for optimum stability and transient response and should be located as close as possible to the regulators.

SOT-89 PACKAGE OUTLINE



Symbol	Dimension in Millimeters	
	Min	Max
A	1.40	1.60
B	0.44	0.62
B1	0.35	0.54
C	0.35	0.44
D	4.40	4.60
D1	1.62	1.83
E	2.29	2.60
e	1.50 Typ	
H	3.94	4.25
H1	2.63	2.93
L	0.89	1.20
All Dimensions In mm		