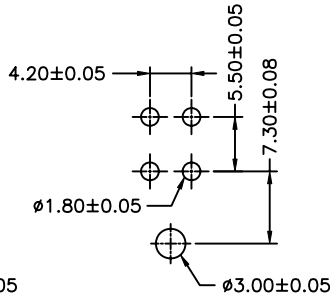
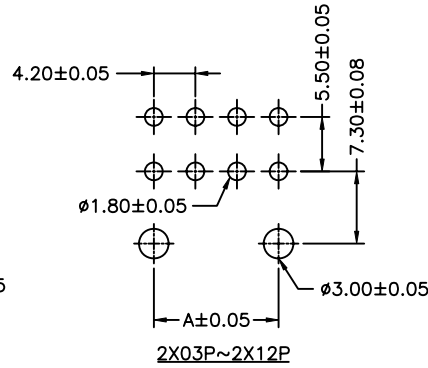


2X01P

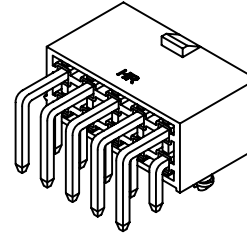


2X02P



2X03P~2X12P

P.C.B LAYOUT



P/N LEGEND

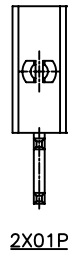
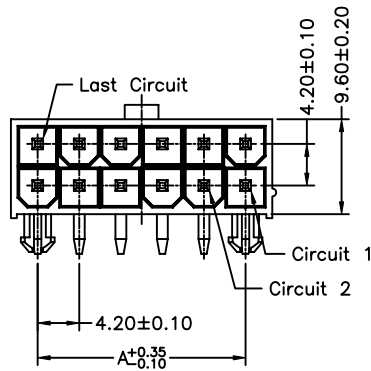
C4255 WR-F-2XNP N X X T1 N XX B
 ① ② ③ ④ ⑤ ⑥ ⑦ ⑧ ⑨ ⑩ ⑪

- ① Series No.
- ② Connector type: WR=Right angel
- ③ Mounting type: F=With foot
- ④ No. of circuits
- ⑤ N=Halogen Free
- ⑥ Material: 0=Nylon 66-V0 ; L=LCP-V0 ; 2=Nylon 66-V2
- ⑦ Color: W=White; N=Natural; B=Black
- ⑧ Plating code for contacts: T1=Tin-plated
- ⑨ Plating code: N=Non-plating
- ⑩ Option code: 00=Standard 01=Matte Tin-plated
- ⑪ Packing code: B=Tray

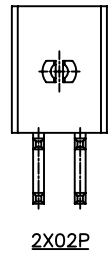
SPECIFICATIONS

Current Rating: 9A AC,DC
 Voltage Rating: 600V AC,DC
 Temperature Range: -25°C ~ +85°C
 Contact Resistance: 10mΩ Max
 Insulation Resistance: 1000MΩ Min
 Withstanding Voltage: 1500V AC/minute
 Pin Material: Brass/Tin-plated

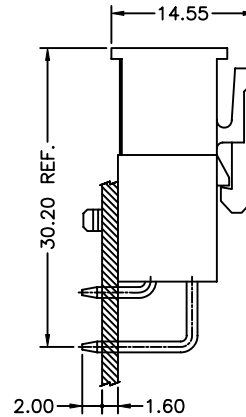
Circuit No.	Dimensions	
	A	B
2X01P	---	5.40
2X02P	4.20	9.60
2X03P	8.40	13.80
2X04P	12.60	18.00
2X05P	16.80	22.20
2X06P	21.00	26.40
2X07P	25.20	30.60
2X08P	29.40	34.80
2X09P	33.60	39.00
2X10P	37.80	43.20
2X11P	42.00	47.40
2X12P	46.20	51.60



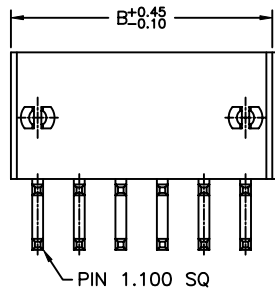
2X01P



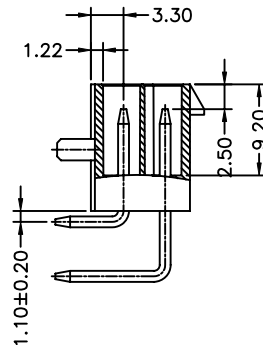
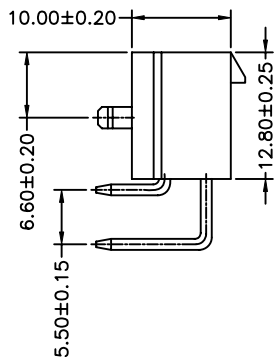
2X02P



MATEO CONDITION



2X03P~2X12P



燦達電子工業股份有限公司
 JOINT TECH ELECTRONIC IND. CO., LTD.

REV.	DESCRIPTION	DATE	NAME	UNIT	SCALE	SHEET	TITLE:	DRAW NO.:	REV.
B0	EN1601190001	2016.01.19	郭木思	mm	1:1	1 of 2	4.20mm PITCH 90° WAFER WITH PEGS, MINI-FIT	C4255WR-F-2XNPNXXXXXXXX	B0
A5	EN1503270002	2015.03.27	郭木思	DRAWN BY 陳錦展	APPROVED BY 董正一				
A4	EN1411210001	2014.11.21	郭木思						
A3	EN1404170004	2014.04.17	郭木思	2011.03.08					
A2	EN1212170408	2012.12.17	劉包根	GENERAL TOLERANCE					
A1	EN1107270305	2011.07.27	謝金發	X.X±0.25	ANGLE±				
A0	NEW RELEASE	2011.03.08	陳錦展	X.XX±0.15					
REV.	DESCRIPTION	DATE	NAME	X.XXX±0.05					