

Customer Information Sheet

DRAWING No.: M80-FCXXX05F2-XXXXF2

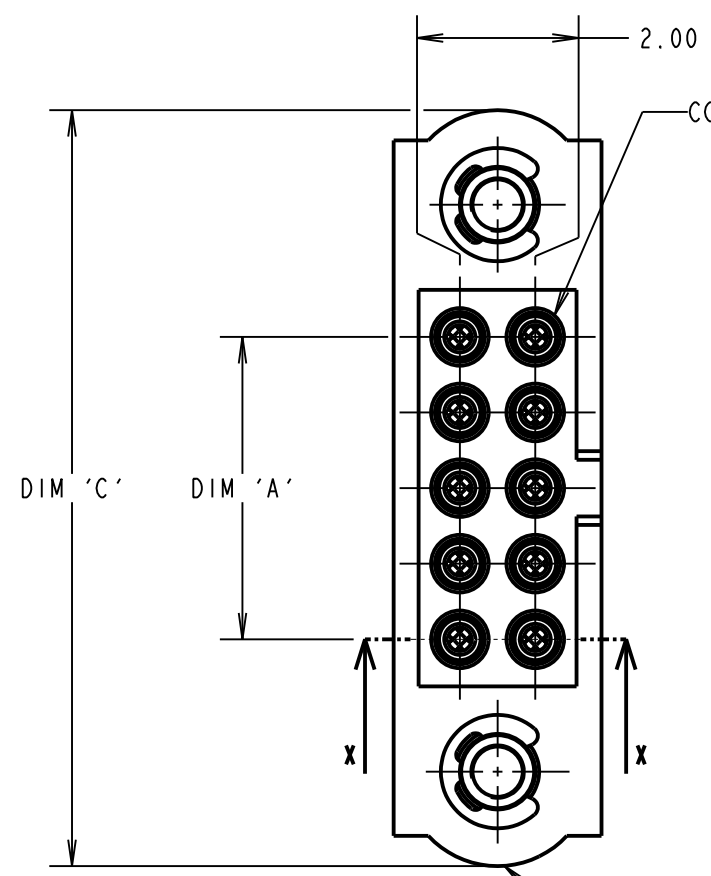
IF IN DOUBT - ASK

©

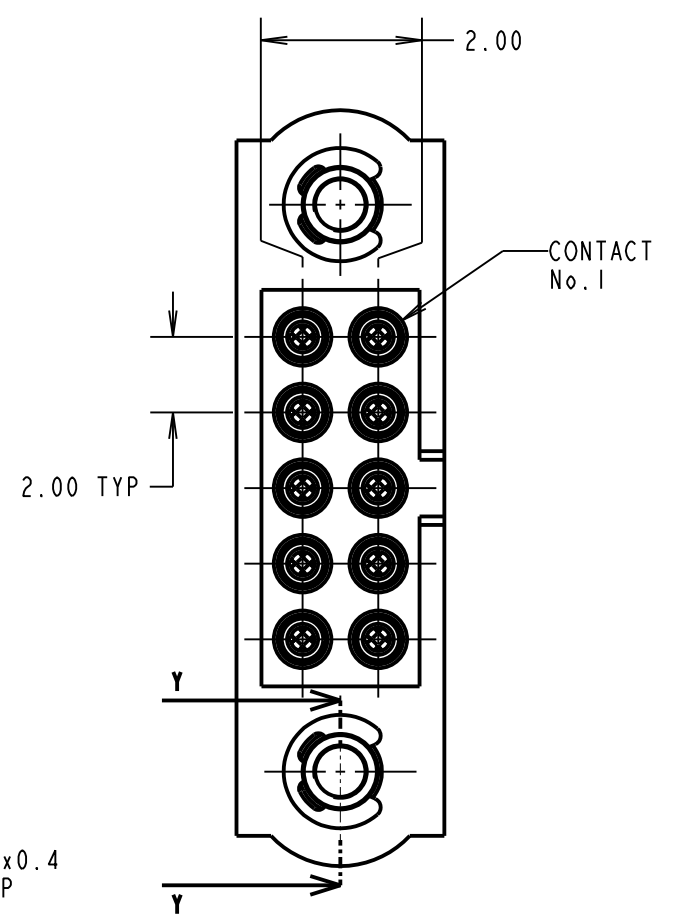
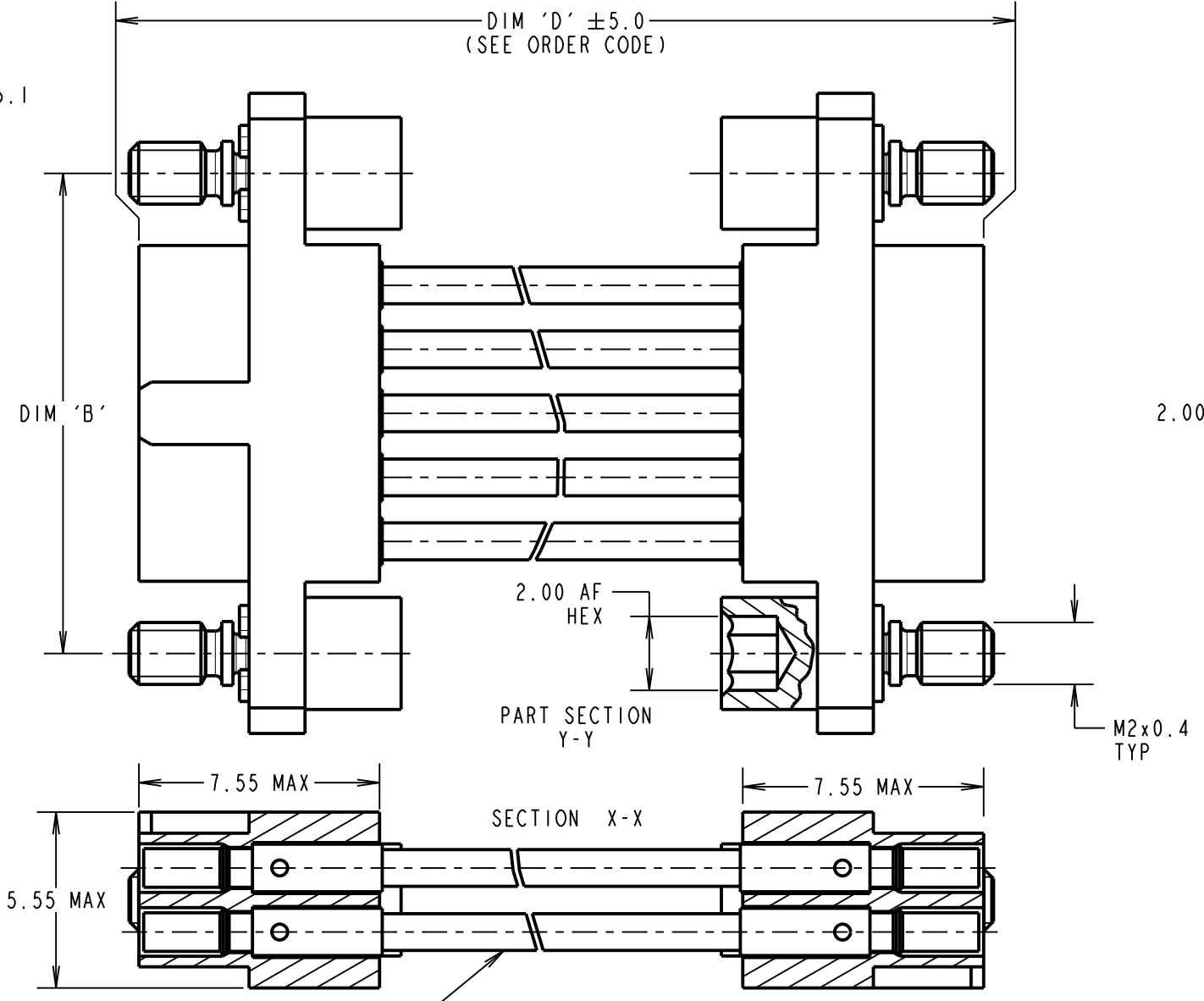
NOT TO SCALE

THIRD ANGLE PROJECTION

ALL DIMENSIONS IN mm



FEMALE MOULDING (2-OFF):
SEE ORDER CODE FOR TOTAL No. OF CONTACTS



WHITE PTFE WIRE:
IN ACCORDANCE WITH COMPONENT SPECIFICATION C049XX
(SEE ORDER CODE FOR WIRE GAUGE)

- NOTES:
1. CABLE ASSEMBLIES WILL BE BULK PACKED IN BAGS.
 2. FOR COMPLETE SPECIFICATION, SEE COMPONENT SPECIFICATION C005XX (LATEST ISSUE) AND C049XX (LATEST ISSUE).
 3. WIRING OF CONNECTOR:
CONTACT 1 TO CONTACT 1,
CONTACT 2 TO CONTACT 2, ETC.

DIMENSION	MEASUREMENT
DIM 'A'	TOTAL No. OF CONTACTS - 2.00
DIM 'B'	TOTAL No. OF CONTACTS + 5.00
DIM 'C'	TOTAL No. OF CONTACTS + 10.0

EXAMPLE PART No.:

2 x 10 CONTACT CONNECTOR WITH 150mm OF 22AWG WIRE = M80-FC11005F2-0150F2

2 x 50 CONTACT CONNECTOR WITH 450mm OF 26AWG WIRE = M80-FC35005F2-0450F2

ORDER CODE:
M80-FCXXX05F2-XXXXF2

WIRE AWG: _____

1 = 22AWG (LARGE BORE)
2 = 24AWG (SMALL BORE)
3 = 26AWG (SMALL BORE)
4 = 28AWG (SMALL BORE)
5 = 30AWG (EXTRA SMALL BORE)

DIM 'D' LENGTH: _____

0060 = 60mm MIN
9999 = 9999mm MAX
(SEE TABLE FOR EXAMPLES)

TOTAL No. OF CONTACTS: _____

04 TO 50
EVEN NUMBERS ONLY

RA	8	27.11.20	30302
NAME	ISS.	DATE	CN/CO
APPROVED: R.ALEXANDER			
CHECKED: R.PORTLOCK			
DRAWN: R.PORTLOCK			
CUSTOMER REF.:			
ASSEMBLY DRG:			

HARWIN

www.harwin.com
technical@harwin.com

THIS DRAWING AND ANY INFORMATION OR DESCRIPTIVE MATTER SET OUT HEREON ARE CONFIDENTIAL AND COPYRIGHT PROPERTY OF THE HARWIN GROUP AND MUST NOT BE DISCLOSED, LOANED, COPIED OR USED FOR MANUFACTURING, TENDERING OR FOR ANY OTHER PURPOSE WITHOUT THEIR WRITTEN PERMISSION.

TOLERANCES

X. = ±1mm
X.X = ±0.50mm
X.XX = ±0.20mm
X.XXX = ±0.01mm

ANGLES = ±5°
UNLESS STATED

MATERIAL: SEE ABOVE

FINISH: SEE ABOVE

S/AREA: mm²

TITLE: M80 FEMALE-TO-FEMALE CABLE ASSEMBLY WITH HEX SOCKET JACKSCREWS

DRAWING NUMBER: **M80-FCXXX05F2-XXXXF2**

SHT 2 OF 2

Mouser Electronics

Authorized Distributor

Click to View Pricing, Inventory, Delivery & Lifecycle Information:

[Harwin:](#)

[M80-FC20605F2-0150F2](#) [M80-FC21005F2-0150F2](#) [M80-FC22005F2-0150F2](#) [M80-FC22605F2-0150F2](#) [M80-FC30605F2-0300F2](#) [M80-FC31005F2-0300F2](#) [M80-FC31605F2-0300F2](#) [M80-FC32605F2-0300F2](#) [M80-FC35005F2-0300F2](#) [M80-FC22005F2-0300F2](#)