

Customer Information Sheet

DRAWING No.: M80-852XXXX

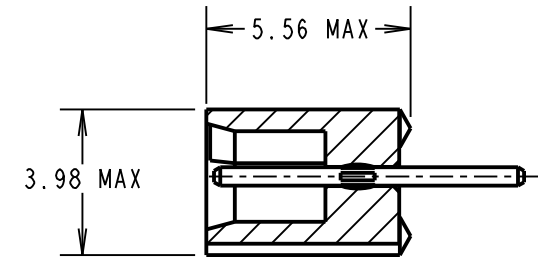
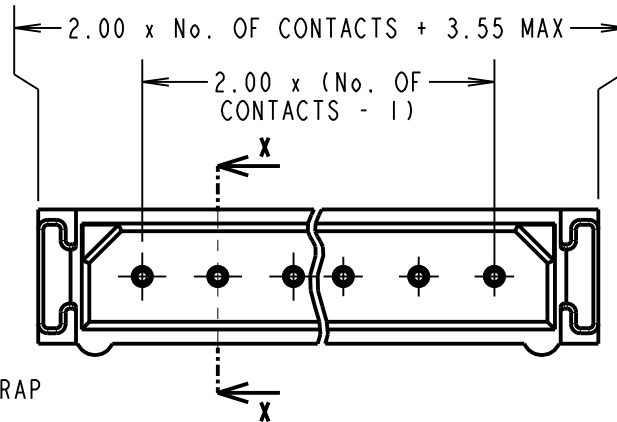
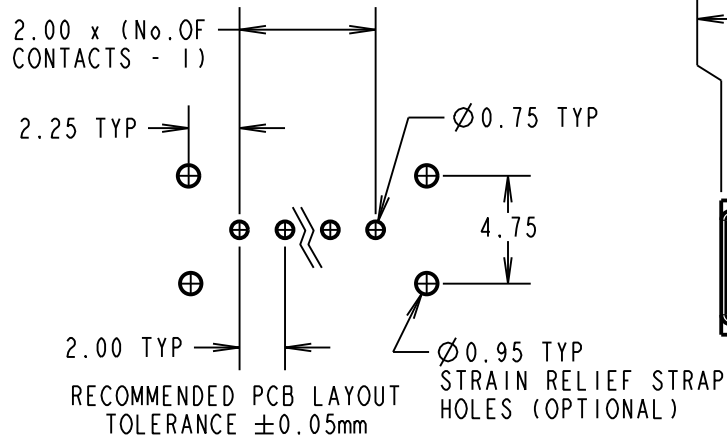
IF IN DOUBT - ASK

©

NOT TO SCALE

THIRD ANGLE PROJECTION

ALL DIMENSIONS IN mm



SECTION X-X

SPECIFICATIONS:

MATERIAL:
 Moulding = GLASS-FILLED PPS UL94V-0, BLACK
 CONTACTS = PHOSPHOR BRONZE

FINISH:
CONTACTS:
 22 = 0.75µm GOLD ON CONTACT AREA,
 3µm 90/10 TIN/LEAD ON TAILS
 42 = 0.75µm GOLD ON CONTACT AREA,
 3.0µm 100% TIN OVER NICKEL ON TAILS
 45 = 0.75µm GOLD

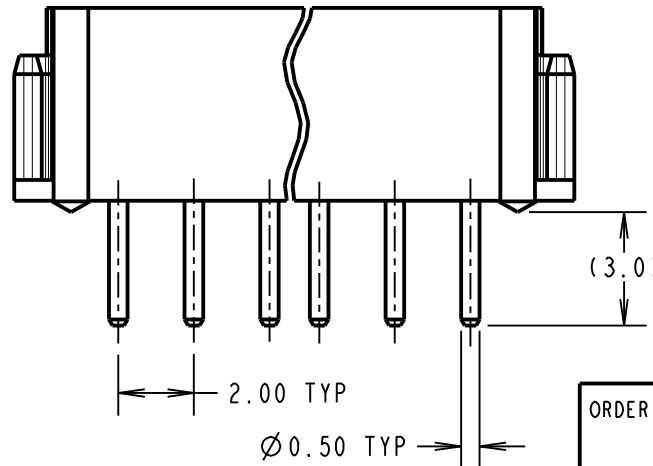
ELECTRICAL:
 CURRENT RATING (25°C) = 3.0A MAX.
 CURRENT RATING (85°C) = 2.2A MAX.
 WORKING VOLTAGE = 800V AC/DC
 VOLTAGE PROOF = 1200V AC/DC
 CONTACT RESISTANCE (INITIAL) = 20 mΩ MAX.
 CONTACT RESISTANCE (AFTER CONDITIONING) = 25 mΩ MAX.
 INSULATION RESISTANCE (INITIAL) = 1000 MΩ MIN.
 INSULATION RESISTANCE (AFTER CONDITIONING) = 100 MΩ MIN.

MECHANICAL:
 DURABILITY = 500 OPERATIONS

ENVIRONMENTAL:
 TEMPERATURE RANGE = -55°C TO +125°C

PACKING:
 TUBE

FOR COMPLETE SPECIFICATION,
 SEE COMPONENT SPECIFICATION C005XX (LATEST ISSUE)



NOTES:

- 2-OFF STRAIN RELIEF STRAPS M80-0030006 MAY BE USED WITH THIS CONNECTOR.

OBSOLETE

Pin counts 17 and 22
 Last Time Buy 21-Aug-2020

ORDER CODE: **M80-852XXXX**

TOTAL No. OF WAYS
 02 - 07, 17, 22:

FINISH:
 22 = SELECTIVE GOLD + TIN/LEAD
 42 = SELECTIVE GOLD + 100% TIN
 45 = GOLD

MGP	8	21.01.21	22137
NAME	ISS.	DATE	CN/CO
APPROVED: MGP			
CHECKED: MR			
DRAWN: I. SANDY			
CUSTOMER REF.:			
ASSEMBLY DRG:			

HARWIN

www.harwin.com
 technical@harwin.com

THIS DRAWING AND ANY INFORMATION OR DESCRIPTIVE MATTER SET OUT HEREON ARE CONFIDENTIAL AND COPYRIGHT PROPERTY OF THE HARWIN GROUP AND MUST NOT BE DISCLOSED, LOANED, COPIED OR USED FOR MANUFACTURING, TENDERING OR FOR ANY OTHER PURPOSE WITHOUT THEIR WRITTEN PERMISSION.

TOLERANCES
 X. = ±1mm
 X.X = ±0.50mm
 X.XX = ±0.20mm
 X.XXX = ±0.01mm

ANGLES = ±5°
 UNLESS STATED

MATERIAL:
 SEE ABOVE

FINISH:
 SEE ABOVE

S/AREA:
 mm²

TITLE:
 DATAMATE SIL
 VERTICAL PC TAIL PLUG
 ASSEMBLY (RoHS)

DRAWING NUMBER:
M80-852XXXX

SHT
 2
 OF 2

Mouser Electronics

Authorized Distributor

Click to View Pricing, Inventory, Delivery & Lifecycle Information:

[Harwin:](#)

[M80-8521722](#) [M80-8520722](#) [M80-8520542](#) [M80-8521742](#) [M80-8520342](#) [M80-8520742](#) [M80-8520442](#) [M80-8520642](#) [M80-8520245](#) [M80-8520242](#) [M80-8522242](#) [M80-8520345](#) [M80-8520445](#) [M80-8520545](#) [M80-8520645](#) [M80-8520745](#) [M80-8521745](#) [M80-8522245](#) [M80-8522222](#) [M80-8520322](#) [M80-8520622](#) [M80-8520522](#) [M80-8520422](#)