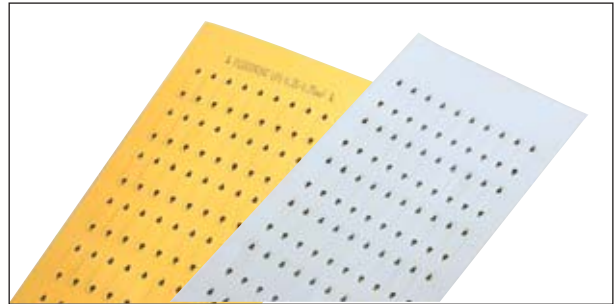
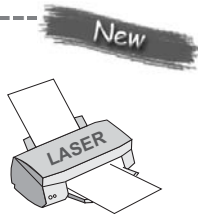



# Marking label LASER-printer

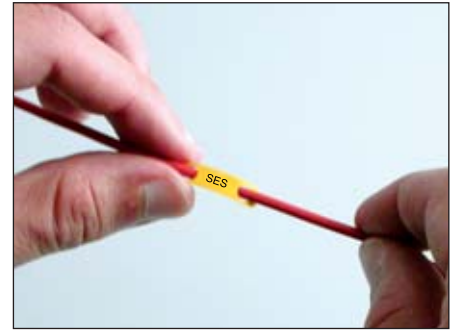
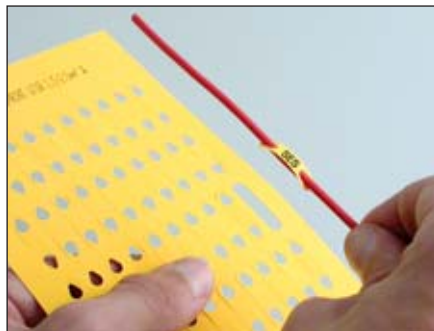
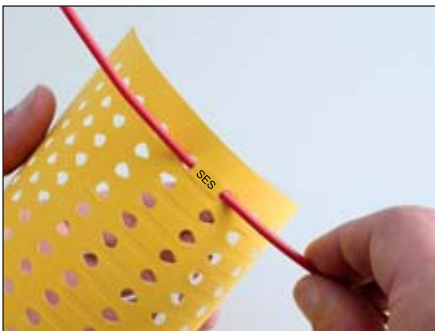


## Label LF

**Material:** PET  
**Temperature range:** -40°C to +125°C  
**Label thickness:** 195 µm  
**Standard colour:** white - yellow  
**Specification:**  
 - printed on a LASER printer



type	art. no. 001	art. no. 004	printing surface mm	for cable section mm <sup>2</sup>	no. of carriers per sheet	
<b>LF1</b>	0738 0030 001	0738 0030 004	5,2 x 13	0,75 - 1,5	60	10
<b>LF1L</b>	0738 0031 001	0738 0031 004	5,2 x 24	0,75 - 1,5	30	10
<b>LF1B</b>	0738 0032 001	0738 0032 004	5,7 x 11	1,5 - 2,5	60	10
<b>LF1BL</b>	0738 0033 001	0738 0033 004	5,7 x 22	1,5 - 2,5	30	10
<b>LF2</b>	0738 0034 001	0738 0034 004	7 x 10	2,5 - 6	60	10
<b>LF3</b>	0738 0035 001	0738 0035 004	11 x 17	6 - 16	20	10



You can download the printing software for these labels on our web site: [www.ses-sterling.com](http://www.ses-sterling.com), choose **Services**, then **Download**.