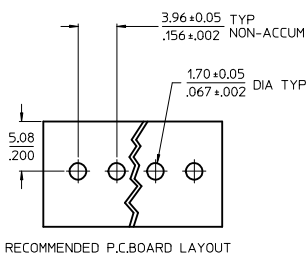
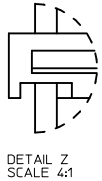
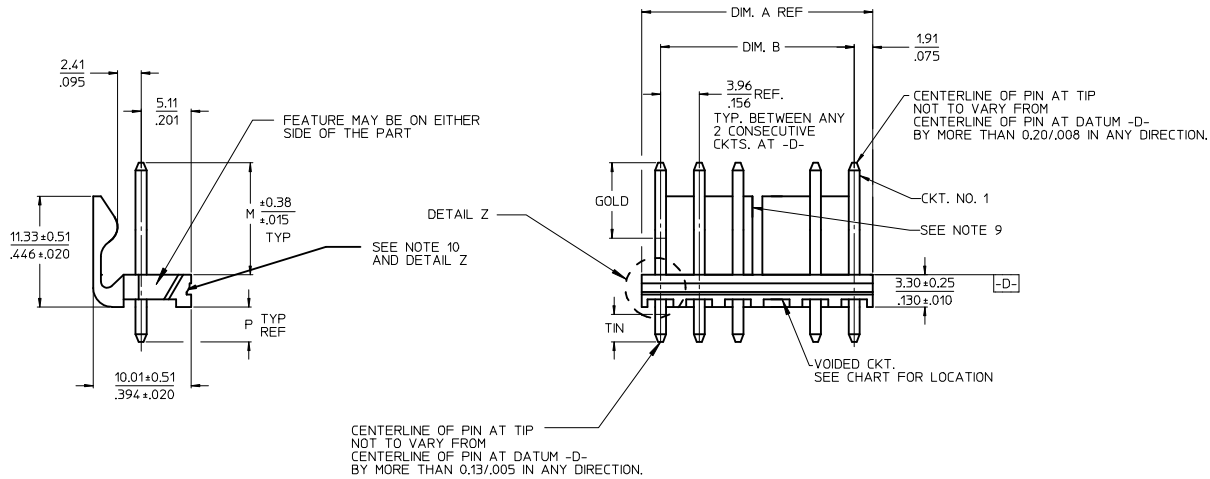


CKT	DIM. A	DIM. B	SLOT LOC BETWEEN CKTS
2	7.77 .306	3.96±0.05 .156±0.002	NONE
3	11.73 .462	7.92±0.08 .312±0.003	NONE
4	15.70 .618	11.89±0.08 .468±0.003	NONE
5	19.66 .774	15.85±0.10 .624±0.004	NONE
6	23.62 .930	19.81±0.10 .780±0.004	3 & 4
7	27.58 1.086	23.77±0.10 .936±0.004	4 & 5
8	31.55 1.242	27.74±0.13 1.092±0.005	4 & 5
9	35.51 1.398	31.70±0.13 1.248±0.005	5 & 6
10	39.47 1.554	35.66±0.13 1.404±0.005	5 & 6
11	43.43 1.710	39.62±0.15 1.560±0.006	6 & 7
12	47.40 1.866	43.59±0.15 1.716±0.006	4 & 5 8 & 9
13	51.36 2.022	47.55±0.15 1.872±0.006	4 & 5 9 & 10
14	55.32 2.178	51.51±0.18 2.028±0.007	5 & 6 9 & 10
15	59.28 2.334	55.47±0.18 2.184±0.007	5 & 6 10 & 11
16	63.25 2.490	59.44±0.18 2.340±0.007	5 & 6 11 & 12
17	67.21 2.646	63.40±0.20 2.496±0.008	6 & 7 11 & 12
18	71.17 2.802	67.36±0.20 2.652±0.008	6 & 7 12 & 13



CENTERLINE OF PIN AT TIP NOT TO VARY FROM CENTERLINE OF PIN AT DATUM -D- BY MORE THAN 0.13/.005 IN ANY DIRECTION.

- NOTES:
- MATERIAL: HEADER-GLASS FILLED POLYESTER, 94V-0, MOLDED NATURAL (WHITE).
 - FINISH: (102-TIN) OVERALL TIN: 0.00508/.000200 MIN OVER 0.00254/.000100 MIN COPPER. (122-TIN) OVERALL TIN: 0.00381/.000150 MIN OVER 0.00076/.000030 MIN NICKEL. (208-15 GOLD) SELECT GOLD: 0.00038/.000015 MIN, SELECT TIN: 0.00254/.000100 MIN, OVERALL NICKEL UNDERPLATE: 0.00127/.000050 MIN. (228-30 GOLD) SELECT GOLD: 0.00076/.000030 MIN, SELECT TIN: 0.00254/.000100 MIN, OVERALL NICKEL UNDERPLATE: 0.00127/.000050 MIN. (501-GOLD) OVERALL GOLD: 0.00051/.000020 MIN OVER 0.00076/.000030 MIN NICKEL.
 - THE PRIMARY SHIPPING CARTON WILL BE LABELED "COMPLIANT TO RoHS DIRECTIVE 2002/95/EC AND ELV ANNEX II OF DIRECTIVE 2000/53/EC". CARTONS WITHOUT THIS LABEL MAY CONTAIN PRODUCT WITH TIN-LEAD PLATING.
 - PRODUCT SPECIFICATION AND PROCESS PARAMETERS: SEE PS-08-50.
 - PACKAGING INFORMATION: SEE CHARTS.
 - SOLDERABILITY: PER SMES-152.
 - PIN PUSH-OUT FORCE, PRIOR TO SOLDERING, A 3 LB. MINIMUM FORCE (IN EITHER DIRECTION)
 - PARTS ARE STACKABLE END TO END ON 3.96/.156 CENTERS.
 - THIS PART CONFORMS TO CLASS B REQUIREMENTS OF COSMETIC SPECIFICATION PS-45499-002.
 - SLOTS ON BACKWALL ARE BETWEEN CIRCUITS. SEE CHART FOR LOCATION.
 - FEATURE MAY OR MAY NOT EXTEND ACROSS THE ENTIRE FACE OF THE PART "SEE DETAIL Z".

2-*	P11
1	P11
SHT	REV

ADD PART NUMBERS
EC NO: UCP2009-2533
DRWN:MK/PPR 2009/04/24
CHKD:SSOUSEK 2009/04/24
APPR:FSMITH 2009/04/27
REV
P11

QUALITY SYMBOLS
▽=0
▽=0

GENERAL TOLERANCES (UNLESS SPECIFIED)
4 PLACES ± --- ± ---
3 PLACES ± --- ± .010
2 PLACES ± 0.25 ± .015
1 PLACE ± 0.38 ± ---
ANGULAR ± 1/2°
DRAFT WHERE APPLICABLE MUST REMAIN WITHIN DIMENSIONS

DIMENSION STYLE	MM/IN
DRAWN BY	DATE
CHECKED BY	DATE
APPROVED BY	DATE
MATERIAL NO.	DOCUMENT NO.

SCALE	2:1
DESIGN UNITS	INCH
THIRD ANGLE PROJECTION	
TITLE	KK 156 HEADER ASSEMBLY FRICTION LOCK VERTICAL SOLID BODY W/O PEGS
MOLEX	MOLEX INCORPORATED
SDA-41791	SHEET NO. 1 OF *

OPTIONS	Group	A-41791-0002/0018	Group	A-41791-0832/0848	Group	A-41791-0849/0865	Group	A-41791-0773/0785
	Header No:	41790-0002/0018	Header No:	41790-0002/0018	Header No:	41790-0002/0018	Header No:	41790-0006/0018
	Pin No:	2161-94(102)	Pin No:	43294-0209	Pin No:	43294-0210	Pin No:	2161-94(102)
	Plating:	102 – TIN	Plating:	208 – 15 GOLD	Plating:	228 – 30 GOLD	Plating:	102 – TIN
	Pin Length L	18.29 / .720	Pin Length L	18.29/. 720	Pin Length L	18.29/. 720	Pin Length L	18.29 / .720
	Mating M	11.43 / .450	Mating M	11.43/. 450	Mating M	11.43/. 450	Mating M	11.43 / .450
	Gold Loc G	N/A	Gold Loc G	6.86/. 270	Gold Loc G	6.86/. 270	Gold Loc G	N/A
	PC Tail P	3.56 / .140	PC Tail P	3.56/. 140	PC Tail P	3.56/. 140	PC Tail P	3.56 / .140
	Tin Loc T	OVERALL	Tin Loc T	4.06/. 160	Tin Loc T	4.06/. 160	Tin Loc T	OVERALL
	Voided Ckts	NONE	Voided Ckts	NONE	Voided CKts	NONE	Voided Ckts	3, 6
Pack Per	PK-41791-001	Pack Per	PK-41791-001	Pack Per	PK-41791-001	Pack Per	PK-41791-001	
Ckts	Material No	Engineer Number	Material No	Engineer Number	Material No	Engineer Number	Material No	Engineer Number
2	26-60-4020	A-41791-0002	41791-0832	A-41791-0832	41791-0849	A-41791-0849		
3	26-60-4030	A-41791-0003	41791-0833	A-41791-0833	41791-0850	A-41791-0850		
4	26-60-4040	A-41791-0004	41791-0834	A-41791-0834	41791-0851	A-41791-0851		
5	26-60-4050	A-41791-0005	41791-0835	A-41791-0835	41791-0852	A-41791-0852		
6	26-60-4060	A-41791-0006	41791-0836	A-41791-0836	41791-0853	A-41791-0853		
7	26-60-4070	A-41791-0007	41791-0837	A-41791-0837	41791-0854	A-41791-0854	41791-0774	A-41791-0774
8	26-60-4080	A-41791-0008	41791-0838	A-41791-0838	41791-0855	A-41791-0855		
9	26-60-4090	A-41791-0009	41791-0839	A-41791-0839	41791-0856	A-41791-0856		
10	26-60-4100	A-41791-0010	41791-0840	A-41791-0840	41791-0857	A-41791-0857		
11	26-60-4110	A-41791-0011	41791-0841	A-41791-0841	41791-0858	A-41791-0858		
12	26-60-4120	A-41791-0012	41791-0842	A-41791-0842	41791-0859	A-41791-0859		
13	26-60-4130	A-41791-0013	41791-0843	A-41791-0843	41791-0860	A-41791-0860		
14	26-60-4140	A-41791-0014	41791-0844	A-41791-0844	41791-0861	A-41791-0861		
15	26-60-4150	A-41791-0015	41791-0845	A-41791-0845	41791-0862	A-41791-0862		
16	26-60-4160	A-41791-0016	41791-0846	A-41791-0846	41791-0863	A-41791-0863		
17	26-60-4170	A-41791-0017	41791-0847	A-41791-0847	41791-0864	A-41791-0864		
18	26-60-4180	A-41791-0018	41791-0848	A-41791-0848	41791-0865	A-41791-0865		

P11	REV:	ECR/ECN INFORMATION	TITLE:	KK 156 HEADER ASSEMBLY FRICTION LOCK VERTICAL SOLID BODY W/O PEGS	SHEET No.		
		EC NO.: UCP2009-2533			- 2 -		
		DATE: 4/27/2009					
DOCUMENT NUMBER:		CREATED / REVISED BY:		CHECKED BY:		APPROVED BY:	
SDA- 41791		MKIPPER		SSOUSEK		FSMITH	

OPTIONS	Group	A-41791-0019/0035	Group	A-41791-0036/0052	Group	A-41791-0059/0074	Group	A-41791-0086/0100
	Header No:	41790-0002/0018	Header No:	41790-0002/0018	Header No:	41790-0002/0018	Header No:	41790-0002/0018
	Pin No:	2161-94(501)	Pin No:	2161-94(102)	Pin No:	2161-94(102)	Pin No:	2161-94(102)
	Plating:	501 – GOLD	Plating:	102 – TIN	Plating:	102 – TIN	Plating:	102 – TIN
	Pin Length L	18.29 / .720	Pin Length L	18.29 / .720	Pin Length L	18.29 / .720	Pin Length L	18.29 / .720
	Mating M	11.43 / .450	Mating M	11.43 / .450	Mating M	11.43 / .450	Mating M	11.43 / .450
	Gold Loc G	OVERALL	Gold Loc G	N/A	Gold Loc G	N/A	Gold Loc G	N/A
	PC Tail P	3.56 / .140	PC Tail P	3.56 / .140	PC Tail P	3.56 / .140	PC Tail P	3.56 / .140
	Tin Loc T	N/A	Tin Loc T	OVERALL	Tin Loc T	OVERALL	Tin Loc T	OVERALL
	Voided Ckts	NONE	Voided Ckts	2	Voided Ckts	3	Voided Ckts	2, 4
Pack Per	PK-41791-001	Pack Per	PK-41791-001	Pack Per	PK-41791-001	Pack Per	PK-41791-001	
Ckts	Material No	Engineer Number	Material No	Engineer Number	Material No	Engineer Number	Material No	Engineer Number
2	26-61-4020	A-41791-0019	26-62-4020	A-41791-0036				
3	26-61-4030	A-41791-0020	26-62-4030	A-41791-0037	26-62-4036	A-41791-0059		
4	26-61-4040	A-41791-0021	26-62-4040	A-41791-0038	26-62-4046	A-41791-0060	26-62-4041	A-41791-0086
5	26-61-4050	A-41791-0022	26-62-4050	A-41791-0039	26-62-4056	A-41791-0061	26-62-4051	A-41791-0087
6	26-61-4060	A-41791-0023	26-62-4060	A-41791-0040	26-62-4066	A-41791-0062	26-62-4061	A-41791-0088
7	26-61-4070	A-41791-0024	26-62-4070	A-41791-0041	26-62-4076	A-41791-0063		A-41791-0089
8	26-61-4080	A-41791-0025	26-62-4080	A-41791-0042	26-62-4086	A-41791-0064		A-41791-0090
9	26-61-4090	A-41791-0026	26-62-4090	A-41791-0043	26-62-4096	A-41791-0065		A-41791-0091
10	26-61-4100	A-41791-0027	26-62-4100	A-41791-0044	26-62-4106	A-41791-0066	26-62-4101	A-41791-0092
11	26-61-4110	A-41791-0028	26-62-4110	A-41791-0045	26-62-4116	A-41791-0067		A-41791-0093
12	26-61-4120	A-41791-0029	26-62-4120	A-41791-0046	26-62-4126	A-41791-0068		A-41791-0094
13	26-61-4130	A-41791-0030	26-62-4130	A-41791-0047	26-62-4136	A-41791-0069		A-41791-0095
14	26-61-4140	A-41791-0031	26-62-4140	A-41791-0048	26-62-4146	A-41791-0070		A-41791-0096
15	26-61-4150	A-41791-0032	26-62-4150	A-41791-0049	26-62-4156	A-41791-0071		A-41791-0097
16	26-61-4160	A-41791-0033	26-62-4160	A-41791-0050	26-62-4166	A-41791-0072		A-41791-0098
17	26-61-4170	A-41791-0034	26-62-4170	A-41791-0051	26-62-4176	A-41791-0073		A-41791-0099
18	26-61-4180	A-41791-0035	26-62-4180	A-41791-0052	26-62-4186	A-41791-0074		A-41791-0100

P11	REV:	ECR/ECN INFORMATION	TITLE:	KK 156 HEADER ASSEMBLY FRICTION LOCK VERTICAL SOLID BODY W/O PEGS	SHEET No.		
		EC NO.: UCP2009-2533			- 3 -		
		DATE: 4/27/2009					
DOCUMENT NUMBER:		CREATED / REVISED BY:		CHECKED BY:		APPROVED BY:	
SDA- 41791		MKIPPER		SSOUSEK		FSMITH	

OPTIONS	Group	A-41791-0138/0154	Group	A-41791-0253/0266	Group		Group	
	Header No:	41790-0002/0018	Header No:	41790-0002/0018	Header No:		Header No:	
	Pin No:	2161-94(122)	Pin No:	2161-94(122)	Pin No:		Pin No:	
	Plating:	122 – TIN	Plating:	122 – TIN	Plating:		Plating:	
	Pin Length L	18.29 / .720	Pin Length L	18.29 / .720	Pin Length L		Pin Length L	
	Mating M	11.43 / .450	Mating M	11.43 / .450	Mating M		Mating M	
	Gold Loc G	N/A	Gold Loc G	N/A	Gold Loc G		Gold Loc G	
	PC Tail P	3.56 / .140	PC Tail P	3.56 / .140	PC Tail P		PC Tail P	
	Tin Loc T	OVERALL	Tin Loc T	OVERALL	Tin Loc T		Tin Loc T	
	Voided Ckts	NONE	Voided Ckts	5	Voided Ckts		Voided Ckts	
Pack Per	PK-41791-001	Pack Per	PK-41791-001	Pack Per		Pack Per		
Ckts	Material No	Engineer Number	Material No	Engineer Number	Material No	Engineer Number	Material No	Engineer Number
2	26-60-4022	A-41791-0138						
3	26-60-4032	A-41791-0139						
4	26-60-4042	A-41791-0140						
5	26-60-4052	A-41791-0141		A-41791-0253				
6	26-60-4062	A-41791-0142	26-62-4064	A-41791-0254				
7	26-60-4072	A-41791-0143	26-62-4074	A-41791-0255				
8	26-60-4082	A-41791-0144	26-62-4084	A-41791-0256				
9	26-60-4092	A-41791-0145		A-41791-0257				
10	26-60-4102	A-41791-0146		A-41791-0258				
11	26-60-4112	A-41791-0147		A-41791-0259				
12	26-60-4122	A-41791-0148		A-41791-0260				
13	26-60-4132	A-41791-0149	26-62-4134	A-41791-0261				
14	26-60-4142	A-41791-0150		A-41791-0262				
15	26-60-4152	A-41791-0151		A-41791-0263				
16	26-60-4162	A-41791-0152		A-41791-0264				
17	26-60-4172	A-41791-0153		A-41791-0265				
18	26-60-4182	A-41791-0154		A-41791-0266				

REV:	ECR/ECN INFORMATION	TITLE:	KK 156 HEADER ASSEMBLY FRICTION LOCK VERTICAL SOLID BODY W/O PEGS	SHEET No.
P11	EC NO.: UCP2009-2533			- 4 -
	DATE: 4/27/2009			
DOCUMENT NUMBER:	CREATED / REVISED BY:	CHECKED BY:	APPROVED BY:	
SDA- 41791	MKIPPER	SSOUSEK	FSMITH	

OPTIONS	Group	A-41791-0297/0308	Group	A-41791-0309/0308	Group	A-41791-0464/0480	Group	
	Header No:	41790-0002/0018	Header No:	41790-0002/0018	Header No:	41790-0002/0018	Header No:	
	Pin No:	2161-94(122)	Pin No:	2161-94(501)	Pin No:	2161-1(102)	Pin No:	
	Plating:	122 – TIN	Plating:	501 – GOLD	Plating:	102 – TIN	Plating:	
	Pin Length L	18.29 / .720	Pin Length L	18.29 / .720	Pin Length L	19.05 / .750	Pin Length L	
	Mating M	11.43 / .450	Mating M	11.43 / .450	Mating M	11.43 / .450	Mating M	
	Gold Loc G	N/A	Gold Loc G	OVERALL	Gold Loc G	N/A	Gold Loc G	
	PC Tail P	3.56 / .140	PC Tail P	3.56 / .140	PC Tail P	4.32 / .170	PC Tail P	
	Tin Loc T	OVERALL	Tin Loc T	N/A	Tin Loc T	OVERALL	Tin Loc T	
	Voided Ckts	7	Voided Ckts	2	Voided Ckts	NONE	Voided Ckts	
Pack Per	PK-41791-001	Pack Per	PK-41791-001	Pack Per	PK-41791-001	Pack Per		
Ckts	Material No	Engineer Number	Material No	Engineer Number	Material No	Engineer Number	Material No	Engineer Number
2					26-60-4023	A-41791-0464		
3			26-63-4031	A-41791-0310	26-60-4033	A-41791-0465		
4				A-41791-0311	26-60-4043	A-41791-0466		
5			26-63-4051	A-41791-0312	26-60-4053	A-41791-0467		
6			26-63-4061	A-41791-0313	26-60-4063	A-41791-0468		
7		A-41791-0297	26-63-4071	A-41791-0314	26-60-4073	A-41791-0469		
8		A-41791-0298		A-41791-0315	26-60-4083	A-41791-0470		
9	26-60-4094	A-41791-0299		A-41791-0316	26-60-4093	A-41791-0471		
10		A-41791-0300		A-41791-0317	26-60-4103	A-41791-0472		
11		A-41791-0301		A-41791-0318	26-60-4113	A-41791-0473		
12		A-41791-0302		A-41791-0319	26-60-4123	A-41791-0474		
13		A-41791-0303		A-41791-0320	26-60-4133	A-41791-0475		
14		A-41791-0304		A-41791-0321	26-60-4143	A-41791-0476		
15		A-41791-0305		A-41791-0322	26-60-4153	A-41791-0477		
16		A-41791-0306		A-41791-0323	26-60-4163	A-41791-0478		
17		A-41791-0307		A-41791-0324	26-60-4173	A-41791-0479		
18		A-41791-0308		A-41791-0325	26-60-4183	A-41791-0480		

REV:	ECR/ECN INFORMATION	TITLE:	SHEET No.
P11	EC NO.: UCP2009-2533	KK 156 HEADER ASSEMBLY FRICTION LOCK VERTICAL SOLID BODY W/O PEGS	- 5 -
	DATE: 4/27/2009		
	DOCUMENT NUMBER: SDA- 41791		

OPTIONS	Group	A-41791-0583/0597	Group	A-41791-0598/0609	Group	A-41791-0638/0653	Group	A-41791-1036 / 1048
	Header No:	41790-0002/0018	Header No:	41790-0002/0018	Header No:	41790-0002/0018	Header No:	41790-0006 / 0018
	Pin No:	2161-94(102)	Pin No:	2161-94(102)	Pin No:	2161-94(501)	Pin No:	2161-94(102)
	Plating:	102 – TIN	Plating:	102 – TIN	Plating:	501 – GOLD	Plating:	102 – TIN
	Pin Length L	18.29 / .720	Pin Length L	18.29 / .720	Pin Length L	18.29 / .720	Pin Length L	18.29 / .720
	Mating M	11.43 / .450	Mating M	11.43 / .450	Mating M	11.43 / .450	Mating M	11.43 / .450
	Gold Loc G	N/A	Gold Loc G	N/A	Gold Loc G	OVERALL	Gold Loc G	N/A
	PC Tail P	3.56 / .140	PC Tail P	3.56 / .140	PC Tail P	3.56 / .140	PC Tail P	3.56 / .140
	Tin Loc T	OVERALL	Tin Loc T	OVERALL	Tin Loc T	N/A	Tin Loc T	OVERALL
	Voided Ckts	4	Voided Ckts	7	Voided Ckts	3	Voided Ckts	4, 6
Pack Per	PK-41791-001	Pack Per	PK-41791-001	Pack Per	PK-41791-001	Pack Per	PK-41791-001	
Ckts	Material No	Engineer Number	Material No	Engineer Number	Material No	Engineer Number	Material No	Engineer Number
2								
3								
4	27-62-4049	A-41791-0583			26-63-4032	A-41791-0638		
5	27-62-4059	A-41791-0584			41791-0639	A-41791-0639		
6	27-62-4069	A-41791-0585			26-63-4052	A-41791-0640		
7	27-62-4079	A-41791-0586	41791-0598	A-41791-0598	26-63-4062	A-41791-0641		A-41791-1036
8	27-62-4089	A-41791-0587	41791-0599	A-41791-0599	41791-0642	A-41791-0642	41791-1037	A-41791-1037
9	27-62-4099	A-41791-0588	41791-0600	A-41791-0600	26-63-4082	A-41791-0643		A-41791-1038
10	27-62-4109	A-41791-0589	41791-0601	A-41791-0601	41791-0644	A-41791-0644		A-41791-1039
11	27-62-4119	A-41791-0590	41791-0602	A-41791-0602	41791-0645	A-41791-0645		A-41791-1040
12	27-62-4129	A-41791-0591	41791-0603	A-41791-0603	41791-0646	A-41791-0646		A-41791-1041
13	27-62-4139	A-41791-0592	41791-0604	A-41791-0604	41791-0647	A-41791-0647		A-41791-1042
14	27-62-4149	A-41791-0593	41791-0605	A-41791-0605	41791-0648	A-41791-0648		A-41791-1043
15	27-62-4159	A-41791-0594	41791-0606	A-41791-0606	41791-0649	A-41791-0649		A-41791-1044
16	27-62-4169	A-41791-0595	41791-0607	A-41791-0607	41791-0650	A-41791-0650		A-41791-1045
17	27-62-4179	A-41791-0596	41791-0608	A-41791-0608	41791-0651	A-41791-0651		A-41791-1046
18	27-62-4189	A-41791-0597	41791-0609	A-41791-0609	41791-0652	A-41791-0652		A-41791-1047
					41791-0653	A-41791-0653		A-41791-1048

P11	REV:	ECR/ECN INFORMATION	TITLE:	KK 156 HEADER ASSEMBLY FRICTION LOCK VERTICAL SOLID BODY W/O PEGS	SHEET No.		
		EC NO.: UCP2009-2533			- 6 -		
		DATE: 4/27/2009					
DOCUMENT NUMBER:		CREATED / REVISED BY:		CHECKED BY:		APPROVED BY:	
SDA- 41791		MKIPPER		SSOUSEK		FSMITH	

OPTIONS	Group	A-41791-0815/0831	Group	A-41791-0883/0891	Group	A-41791-0892/0908	Group	A-41791-0922/0933
	Header No:	41790-0002/0018	Header No:	41790-0010/0018	Header No:	41790-0002/0018	Header No:	41790-0007/0018
	Pin No:	2161-36(102)	Pin No:	2161-94(102)	Pin No:	43294-0299	Pin No:	2161-94(102)
	Plating:	102 – TIN	Plating:	102 – TIN	Plating:	208 – 15 GOLD	Plating:	102 – TIN
	Pin Length L	30.48 / 1.200	Pin Length L	18.29 / .720	Pin Length L	20.83 / .820	Pin Length L	18.29 / .720
	Mating M	11.43 / .450	Mating M	11.43 / .450	Mating M	11.43 / .450	Mating M	11.43 / .450
	Gold Loc G	N/A	Gold Loc G	N/A	Gold Loc G	6.83/. 270	Gold Loc G	N/A
	PC Tail P	15.75/ .620	PC Tail P	3.56 / .140	PC Tail P	6.10/ .240	PC Tail P	3.56 / .140
	Tin Loc T	OVERALL	Tin Loc T	OVERALL	Tin Loc T	6.35/ .250	Tin Loc T	OVERALL
	Voided Ckts	NONE	Voided Ckts	10	Voided Ckts	NONE	Voided Ckts	5, 7
Pack Per	PK-41791-003	Pack Per	PK-41791-001	Pack Per	PK-41791-002	Pack Per	PK-41791-001	
Ckts	Item Number		Item Number		Item Number		Item Number	
2	41791-0815				41791-0892			
3	41791-0816				41791-0893			
4	41791-0817				41791-0894			
5	41791-0818				41791-0895			
6	41791-0819				41791-0896			
7	41791-0820				41791-0897		41791-0922	
8	41791-0821				41791-0898		41791-0923	
9	41791-0822				41791-0899		41791-0924	
10	41791-0823		41791-0883		41791-0900		41791-0925	
11	41791-0824		41791-0884		41791-0901		41791-0926	
12	41791-0825		41791-0885		41791-0902		41791-0927	
13	41791-0826		41791-0886		41791-0903		41791-0928	
14	41791-0827		41791-0887		41791-0904		41791-0929	
15	41791-0828		41791-0888		41791-0905		41791-0930	
16	41791-0829		41791-0889		41791-0906		41791-0931	
17	41791-0830		41791-0890		41791-0907		41791-0932	
18	41791-0831		41791-0891		41791-0908		41791-0933	

REV:	<u>ECR/ECN INFORMATION</u>	<u>TITLE:</u>	<u>SHEET No.</u>
P11	<u>EC NO.:</u> UCP2009-2533	KK 156 HEADER ASSEMBLY FRICTION LOCK VERTICAL SOLID BODY W/O PEGS	- 7 -
	<u>DATE:</u> 4/27/2009		
<u>DOCUMENT NUMBER:</u>	<u>CREATED / REVISED BY:</u>	<u>CHECKED BY:</u>	<u>APPROVED BY:</u>
SDA- 41791	MKIPPER	SSOUSEK	FSMITH

OPTIONS	Group	41791-0934/0948	Group	41791-0966/0976	Group	41791-0977/0993	Group	41791-0994/1002
	Header No:	41790-0004/0018	Header No:	41790-0007/0018	Header No:	41790-0002/0018	Header No:	41790-0010/0018
	Pin No:	43294-0209	Pin No:	2161-94(102)	Pin No:	43294-0345	Pin No:	43294-0209
	Plating:	208 – 15 GOLD	Plating:	102 – TIN	Plating:	228 – 30 GOLD	Plating:	208 – 15 GOLD
	Pin Length L	18.29/. 720	Pin Length L	18.29/. 720	Pin Length L	22.10/. 870	Pin Length L	18.29/. 720
	Mating M	11.43 / .450	Mating M	11.43/. 450	Mating M	11.43/. 450	Mating M	11.43 / .450
	Gold Loc G	6.86/ .270	Gold Loc G	N/A	Gold Loc G	10.02/. 400	Gold Loc G	6.86/ .270
	PC Tail P	3.56/. 140	PC Tail P	3.56/. 140	PC Tail P	7.37/. 290	PC Tail P	3.56/. 140
	Tin Loc T	4.06/. 160	Tin Loc T	OVERALL	Tin Loc T	5.08/. 200	Tin Loc T	4.06/. 160
	Voided Ckts	4	Voided Ckts	3, 7, 8	Voided Ckts	None	Voided Ckts	3, 4, 5, 8, 9, 10
Pack Per	PK-41791-001	Pack Per	PK-41791-001	Pack Per	PK-41791-002	Pack Per	PK-41791-001	
Ckts	Item Number		Item Number		Item Number		Item Number	
2					41791-0977			
3					41791-0978			
4	41791-0934				41791-0979			
5	41791-0935				41791-0980			
6	41791-0936				41791-0981			
7	41791-0937				41791-0982			
8	41791-0938		41791-0966		41791-0983			
9	41791-0939		41791-0967		41791-0984			
10	41791-0940		41791-0968		41791-0985		41791-0994	
11	41791-0941		41791-0969		41791-0986		41791-0995	
12	41791-0942		41791-0970		41791-0987		41791-0996	
13	41791-0943		41791-0971		41791-0988		41791-0997	
14	41791-0944		41791-0972		41791-0989		41791-0998	
15	41791-0945		41791-0973		41791-0990		41791-0999	
16	41791-0946		41791-0974		41791-0991		41791-1000	
17	41791-0947		41791-0975		41791-0992		41791-1001	
18	41791-0948		41791-0976		41791-0993		41791-1002	

P11	REV:	ECR/ECN INFORMATION	TITLE:	KK 156 HEADER ASSEMBLY FRICTION LOCK VERTICAL SOLID BODY W/O PEGS	SHEET No.		
		EC NO.: UCP2009-2533			- 8 -		
		DATE: 4/27/2009					
DOCUMENT NUMBER:		CREATED / REVISED BY:		CHECKED BY:		APPROVED BY:	
SDA- 41791		MKIPPER		SSOUSEK		FSMITH	

OPTIONS	Group	A-41791-1049/1062	Group	A-41791-1063/1071	Group	A-41791-1074/1088	Group	A-41791-0773/0785
	Header No:	41790-0005/0018	Header No:	41790-0010/0018	Header No:	41790-0004/0018	Header No:	41790-0006/0018
	Pin No:	2161-94(102)	Pin No:	2161-94(102)	Pin No:	2161-94(501)	Pin No:	2161-94(102)
	Plating:	102 – TIN	Plating:	102 – TIN	Plating:	501 – GOLD	Plating:	102-TIN
	Pin Length L	18.29 / .720	Pin Length L	18.29 / .720	Pin Length L	18.29 / .720	Pin Length L	18.29/.720
	Mating M	11.43 / .450	Mating M	11.43 / .450	Mating M	11.43 / .450	Mating M	11.43/.450
	Gold Loc G	N/A	Gold Loc G	N/A	Gold Loc G	OVERALL	Gold Loc G	N/A
	PC Tail P	3.56 / .140	PC Tail P	3.56 / .140	PC Tail P	3.56 / .140	PC Tail P	3.56/.140
	Tin Loc T	OVERALL	Tin Loc T	OVERALL	Tin Loc T	N/A	Tin Loc T	OVERALL
	Voided Ckts	2, 5	Voided Ckts	5, 10	Voided Ckts	2, 3, 4	Voided Ckts	3, 6
Pack Per	PK-41791-001	Pack Per	PK-41791-001	Pack Per	PK-41791-001	Pack Per	PK-41791-001	
Ckts	Item Number		Item Number		Item Number		Item Number	
2								
3								
4								
5					41791-1075			
6								
7	41791-1051						41791-0774	
8								
9								
10								
11			41791-1064					
12								
13								
14								
15								
16								
17								
18								

REV:	<u>ECR/ECN INFORMATION</u>	<u>TITLE:</u>	<u>SHEET No.</u>
P11	<u>EC NO.:</u> UCP2009-2533	KK 156 HEADER ASSEMBLY FRICTION LOCK VERTICAL SOLID BODY W/O PEGS	- 9 -
	<u>DATE:</u> 4/27/2009		
<u>DOCUMENT NUMBER:</u>	<u>CREATED / REVISED BY:</u>	<u>CHECKED BY:</u>	<u>APPROVED BY:</u>
SDA- 41791	MKIPPER	SSOUSEK	FSMITH