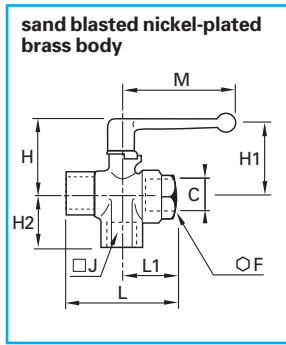


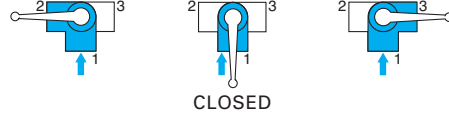
# standard 3 way ball valves

## 0482 female right angled porting

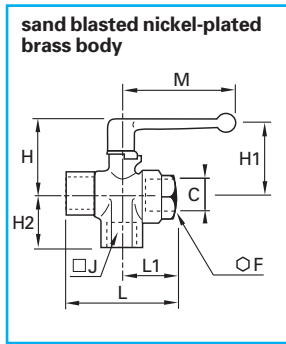


C	DN		F	H	H1	H2	J	L	L1	M	kg
G1/8	4	0482 04 10	14	35	29	18	14	44	25	48	0,110
G1/4	6	0482 06 13	19	38	31	24	22	53	28	48	0,187
G3/8	9	0482 09 17	24	45	43	27	25	59	31	69	0,285
G1/2	12	0482 12 21	27	47	44	33	29	67	34	69	0,351
G3/4	18	0482 18 27	38	59	51	40	39	80	39	108	0,386
G1"	23	0482 23 34	46	63	55	47	48	94	47	108	1,172

maximum working pressure : 20 bar

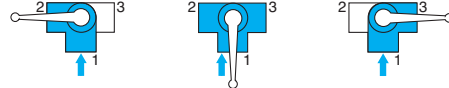


## 0483 female right angled porting without closed position

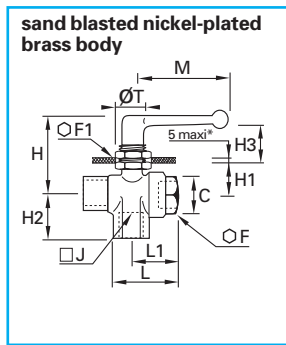


C	DN		F	H	H1	H2	J	L	L1	M	kg
G1/8	4	0483 04 10	14	35	29	18	14	44	25	48	0,102
G1/4	6	0483 06 13	19	38	31	24	22	53	28	48	0,187
G3/8	9	0483 09 17	24	45	43	27	25	59	31	69	0,283
G1/2	12	0483 12 21	27	47	44	33	29	67	34	69	0,352
G3/4	18	0483 18 27	38	59	51	40	39	80	39	108	0,712
G1"	23	0483 23 34	46	63	55	47	48	94	47	108	1,090

maximum working pressure : 20 bar



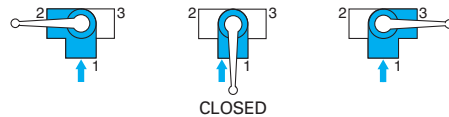
## 0448 panel mountable female right angled porting



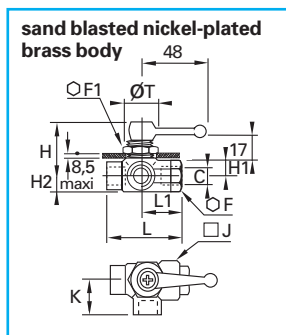
C	DN		F	F1	H	H1	H2	H3	J	L	L1	M	T	kg
G1/8	4	0448 04 10	14	22	37	14	18	12	14	44	25	48	16,5	0,122
G1/4	6	0448 06 13	19	24	45	19	24	14	22	53	28	48	20,5	0,224
G3/8	9	0448 09 17	24	27	50	21	27	21	25	59	31	69	20,5	0,324
G1/2	12	0448 12 21	27	27	51	23	33	21	29	67	34	69	20,5	0,398

maximum working pressure : 20 bar

\*G1/8 version : maximum panel thickness = 3 mm

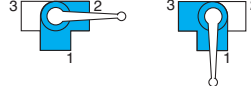


## 0452 panel mountable female equal plane porting - 3 port 2way

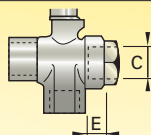


C	DN		F	F1	H	H1	H2	J	K	L	T	kg	
G1/8	4	0452 04 10	14	22	39	10	8	16	18	44	25	19	0,316
G1/4	6	0452 06 13	19	24	40	11	11	23	24	53	28	20	0,298

maximum working pressure : 20 bar



length of internal BSPP thread (E)  
for 0482 – 0448 – 0452 and 0483



C	G1/8	G1/4	G3/8	G1/2	G3/4	G1"
E	8	12	12	15	16,5	19