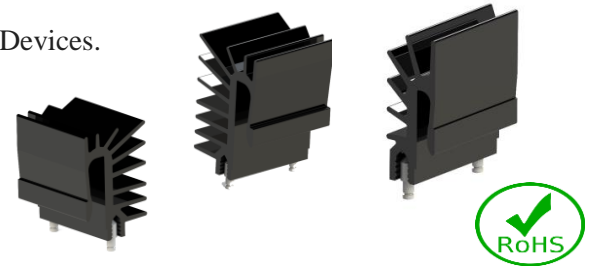


690 Series



Extruded Heat Sinks for TO Devices w/ Clip

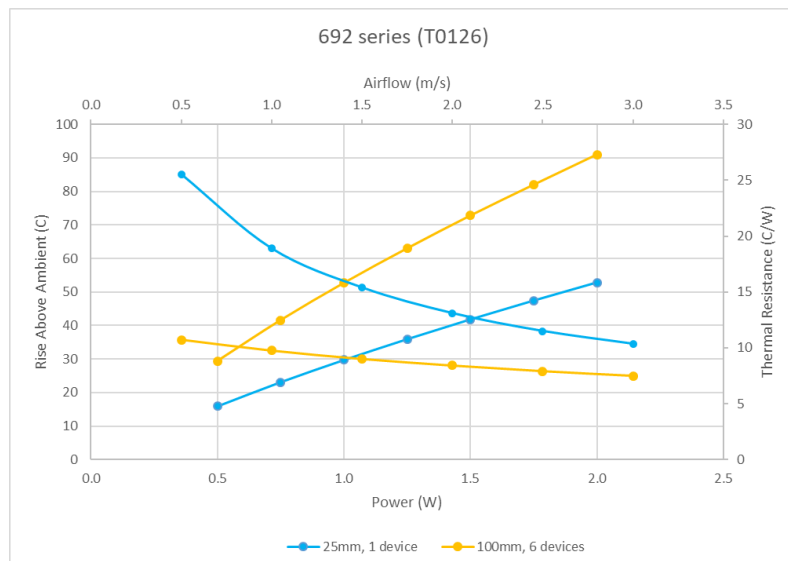
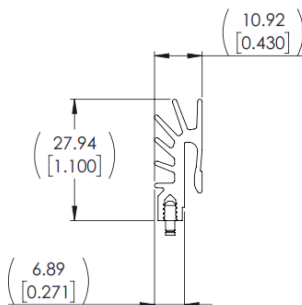
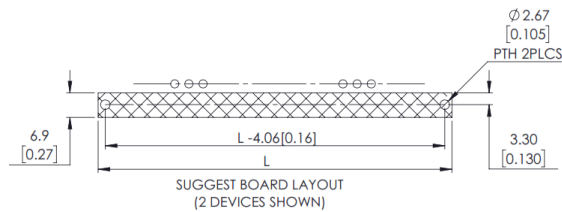
- Wakefield-Vette's 690 series heat sinks are used for TO-126, 220, 247 Devices.
- Aluminum Extruded heat sink with integrated, robust holding feature.
- Easy installation for TO Devices.
- Optimal heat transfer between component and heat sink.
- Solderable retaining pin for PCB mounting.
- Material 6063-T5 Aluminum w/ Brass Pin, Black Anodized



Wakefield Part Number	Description	Length (mm)	Height (mm)	Width (mm)	Attachment Method	Package Cooled
692-25	HEATSINK, TO126, INTEGRATED CLIP, 25MM	25	27.94	10.92	Solder to PCB	TO126
692-50	HEATSINK, TO126, INTEGRATED CLIP, 50MM	50	27.94	10.92	Solder to PCB	TO126
692-75	HEATSINK, TO126, INTEGRATED CLIP, 75MM	75	27.94	10.92	Solder to PCB	TO126
692-100	HEATSINK, TO126, INTEGRATED CLIP, 100MM	100	27.94	10.92	Solder to PCB	TO126
693-25	HEATSINK, TO220, INTEGRATED CLIP, 25MM	25	35.05	22	Solder to PCB	TO220
693-50	HEATSINK, TO220, INTEGRATED CLIP, 50MM	50	35.05	22	Solder to PCB	TO220
693-75	HEATSINK, TO220, INTEGRATED CLIP, 75MM	75	35.05	22	Solder to PCB	TO220
693-100	HEATSINK, TO220, INTEGRATED CLIP, 100MM	100	35.05	22	Solder to PCB	TO220
694-25	HEATSINK, TO247, INTEGRATED CLIP, 25MM	25	35.05	22	Solder to PCB	TO247
694-50	HEATSINK, TO247, INTEGRATED CLIP, 50MM	50	35.05	22	Solder to PCB	TO247
694-75	HEATSINK, TO247, INTEGRATED CLIP, 75MM	75	35.05	22	Solder to PCB	TO247
694-100	HEATSINK, TO247, INTEGRATED CLIP, 100MM	100	35.05	22	Solder to PCB	TO247

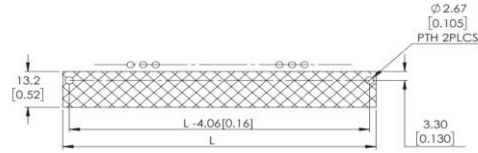
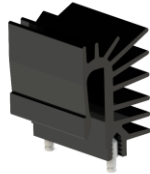
692 Series

Wakefield Part Number	Description	Length (mm)	Height (mm)	Width (mm)	Attachment Method	Package Cooled
692-25	HEATSINK, TO126, INTEGRATED CLIP, 25MM	25	27.94	10.92	Solder to PCB	TO126
692-50	HEATSINK, TO126, INTEGRATED CLIP, 50MM	50	27.94	10.92	Solder to PCB	TO126
692-75	HEATSINK, TO126, INTEGRATED CLIP, 75MM	75	27.94	10.92	Solder to PCB	TO126
692-100	HEATSINK, TO126, INTEGRATED CLIP, 100MM	100	27.94	10.92	Solder to PCB	TO126

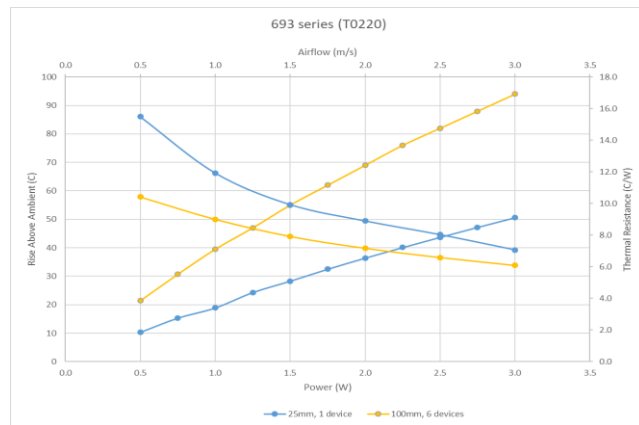
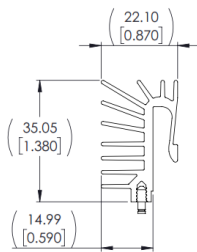


693 Series

Wakefield Part Number	Description	Length (mm)	Height (mm)	Width (mm)	Attachment Method	Package Cooled
693-25	HEATSINK, TO220, INTEGRATED CLIP, 25MM	25	35.05	22	Solder to PCB	TO220
693-50	HEATSINK, TO220, INTEGRATED CLIP, 50MM	50	35.05	22	Solder to PCB	TO220
693-75	HEATSINK, TO220, INTEGRATED CLIP, 75MM	75	35.05	22	Solder to PCB	TO220
693-100	HEATSINK, TO220, INTEGRATED CLIP, 100MM	100	35.05	22	Solder to PCB	TO220

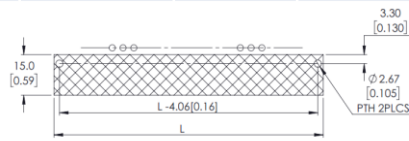
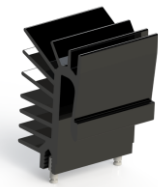


SUGGEST BOARD LAYOUT
(2 DEVICES SHOWN)

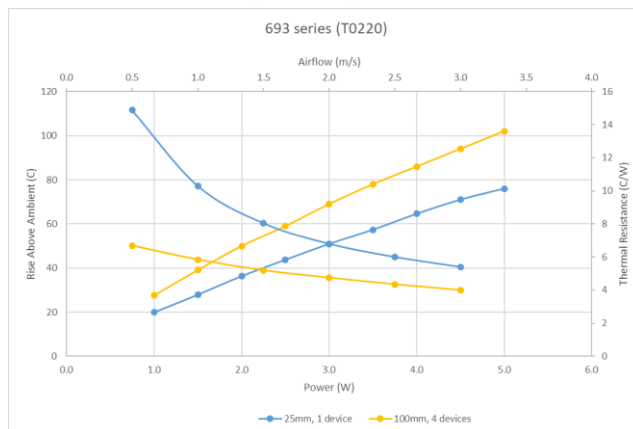
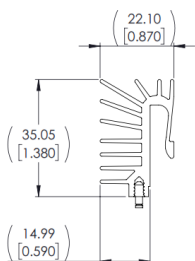


694 Series

Wakefield Part Number	Description	Length (mm)	Height (mm)	Width (mm)	Attachment Method	Package Cooled
694-25	HEATSINK, TO247, INTEGRATED CLIP, 25MM	25	35.05	22	Solder to PCB	TO247
694-50	HEATSINK, TO247, INTEGRATED CLIP, 50MM	50	35.05	22	Solder to PCB	TO247
694-75	HEATSINK, TO247, INTEGRATED CLIP, 75MM	75	35.05	22	Solder to PCB	TO247
694-100	HEATSINK, TO247, INTEGRATED CLIP, 100MM	100	35.05	22	Solder to PCB	TO247



SUGGEST BOARD LAYOUT
(2 DEVICES SHOWN)



Mouser Electronics

Authorized Distributor

Click to View Pricing, Inventory, Delivery & Lifecycle Information:

[Wakefield-Vette:](#)

[693-25](#) [692-100](#) [692-25](#) [692-50](#) [692-75](#) [693-75](#) [694-100](#) [694-25](#) [694-50](#) [693-100](#) [694-75](#) [693-50](#)