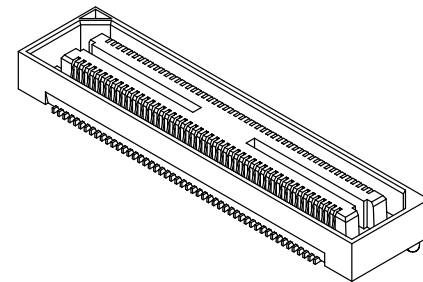
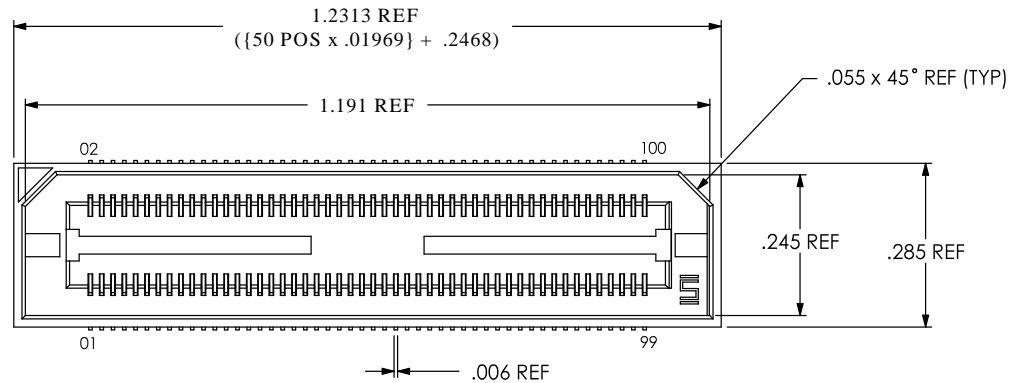


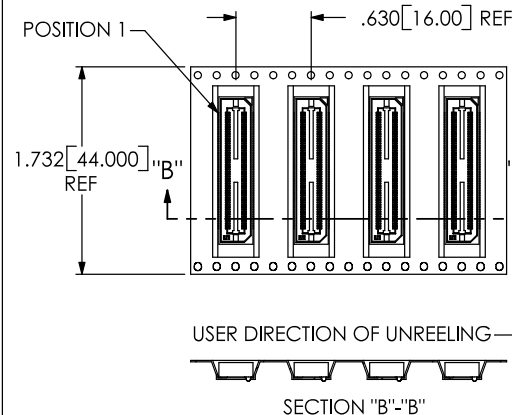
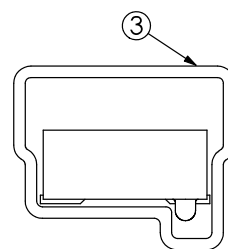
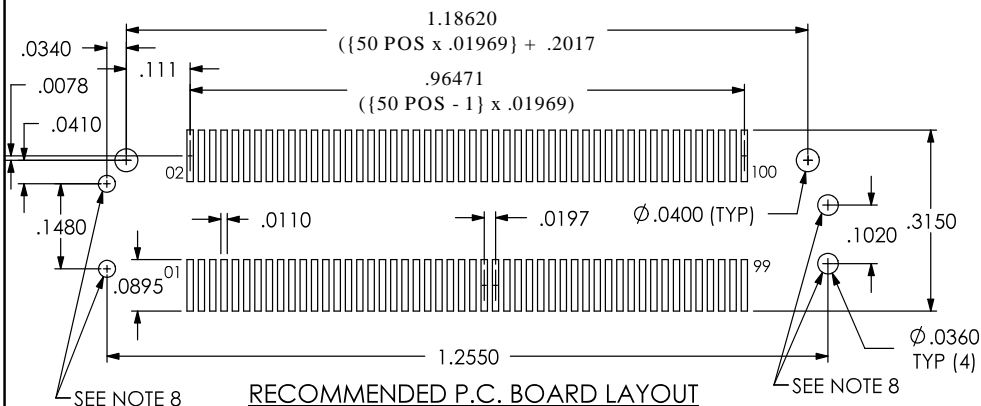
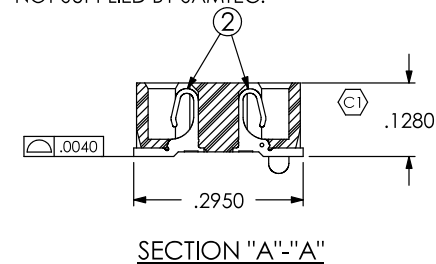
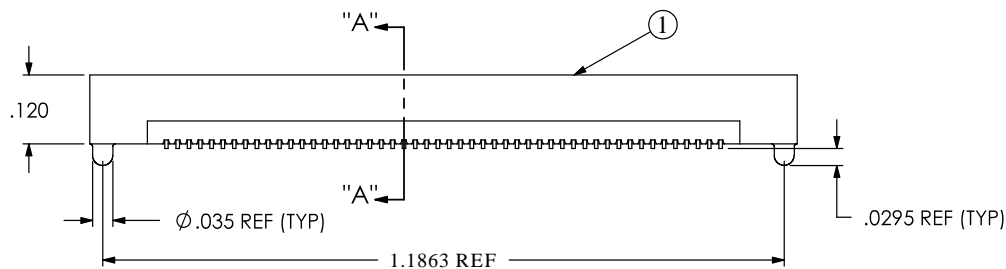
# REVISION

C	TB	D WATHEN
3/29/2001	ECN-8506	
ADD RECOMMENDED PCB BOARD LAYOUT AND UPDATE PRINT TO CURRENT ASP STANDARDS.		
D	TW	J HENRY
5/10/2001	ECN-9359	
ADD TAPE & REEL VIEW. ADD NOTE 2 TO CLARIFY THAT -01 WILL BE PACKAGED IN TUBES & -01-TR WILL BE PACKAGED IN TAPE & REEL.		
E	JT	M BAUMANN
7/9/2001	ECN-10643	
ADD POSITION NUMBERS TO TOP VIEW.		
F	TB	J HENRY
9/24/2001	ECN-12585	
ADD POSITION NUMBERS TO PCB LAYOUT		
G	TW	E MINGS
11/29/2004	ECN-41188	
ADD NOTE 8 AND UPDATE FOOTNOTE.		
H	JC	N BROWN
1/12/2005	ECN-42469	
TAPE AND REEL VIEW: CHG 56MM TO 44MM.		
J	BM	J FREEMAN
2/28/2006	ECN-56581	
CHG. TUBE PLUG TO TP-09 WAS TP-24		
K	BR	C GRANTZ
6/15/2006	ECN-60602	
CHG TUBE FROM PT-1-24-01-59 TO PT-1-24-02-78-TP-09.		



### NOTES:

- 50 POS NOT AVAILABLE AS STD.
- PACKAGE -01 IN TUBES; -01-TR IN TAPE & REEL.
- BURR ALLOWANCE: .0015 MAX.
- MINIMUM PUSHOUT FORCE: .5 OZ.
- MAXIMUM ALLOWABLE BOW: .002 INCH/INCH AFTER ASSEMBLY.
- PARTS TO BE PACKAGED IN TUBES.
- Ⓢ REPRESENTS A CRITICAL DIMENSION.
- HOLES ARE FOR OPTIONAL AGILENT SHROUD NOT SUPPLIED BY SAMTEC.



TAPE & REEL VIEW  
 ASP-65067-01-TR ONLY  
 (POCKET & PART NOT DETAILED)

ITEM NO.	PART NUMBER	QUANTITY	MATERIAL
1	BSH-050-01-D-A	1.00000	VECTRA E130i, COLOR: BLACK
2	C-126-01-L	100.00000	PHOS BRONZE, 510 SPRING TEMPER
3	PT-1-24-02-78	.05882	ANTI-STATIC PVC
4	TP-09	.11764	THERMOPLASTIC RUBBER

UNLESS OTHERWISE SPECIFIED, DIMENSIONS ARE IN INCHES.  
 TOLERANCES ARE:  
 DECIMALS ANGLES  
 .XX: ±.01  
 .XXX: ±.005  
 .XXXX: ±.0020

PROPRIETARY NOTE  
 THIS DOCUMENT CONTAINS INFORMATION CONFIDENTIAL AND PROPRIETARY TO SAMTEC, INC. AND SHALL NOT BE REPRODUCED OR TRANSFERRED TO OTHER DOCUMENTS OR DISCLOSED TO OTHERS OR USED FOR ANY PURPOSE OTHER THAN THAT WHICH IT WAS OBTAINED WITHOUT THE EXPRESSED WRITTEN CONSENT OF SAMTEC, INC.

# SAMTEC

520 PARK EAST BLVD, NEW ALBANY, IN 47150  
 \* PHONE: 812.944.6733 FAX: 812.948.5047  
 e-Mail: INFO@SAMTEC.COM CODE: 55322

DO NOT SCALE DRAWING SHEET SCALE: 3:1

PLATING:  
 .000010 GOLD OVER .000050 NICKEL IN CONTACT AREA  
 .000003 MIN GOLD OVER .000050 NICKEL ON REMAINDER

DESCRIPTION:  
 .5mm DOUBLE ROW SOCKET ASSEMBLY

DWG. NO.  
**ASP-65067-01**

BY: KEVIN B 11/02/99 SHEET 1 OF 1