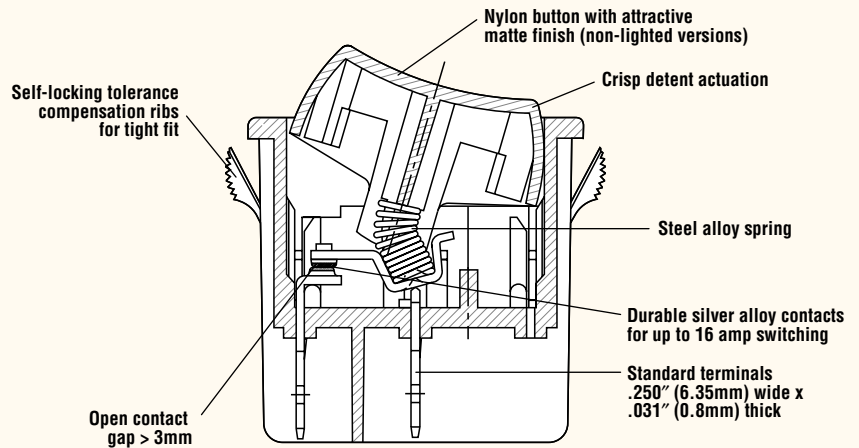


# DOUBLE-POLE POWER ROCKER SWITCH WR Series

## Features

- Rugged construction for 2-pole, high-current applications
- Lighted and non-lighted
- Maintained-action and momentary
- Single-throw and double-throw
- Available in a variety of colors



## Material Specifications

Actuator (non-lighted):	Nylon 66 94V-2
Actuator (lighted):	Polycarbonate
Base:	Nylon 66 94V-2
Spring:	Steel Wire
Contacts:	Silver Alloy
Movable Arm:	Silver-Plated Copper Alloy
Terminals:	Silver- or Tin-Plated Copper Alloy

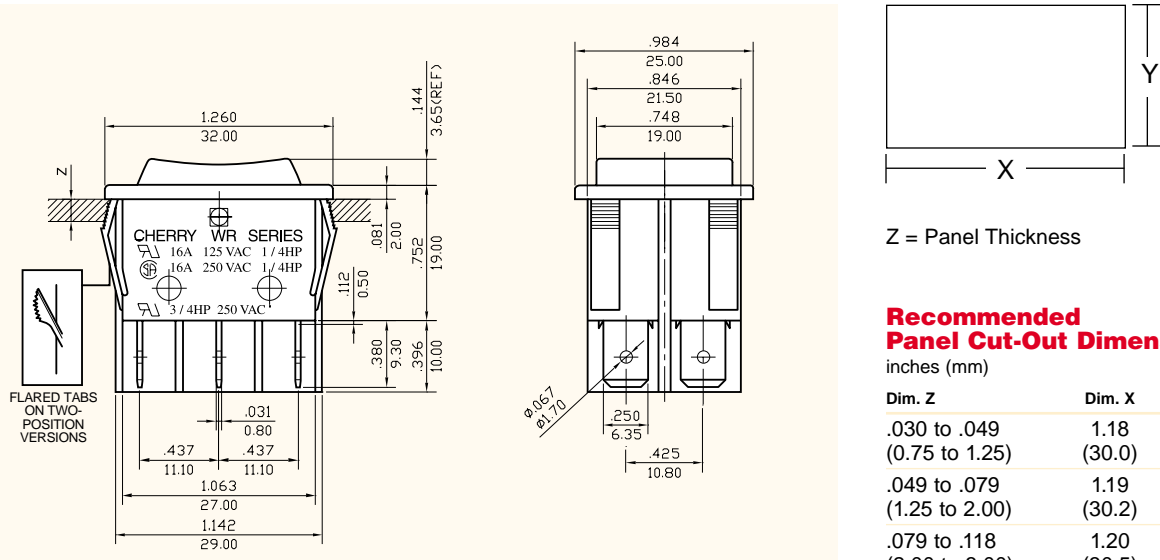
## Specifications

Ratings:	16A 125VAC / 16A 250 VAC 1/4 HP (UL, CSA) 16 (4) A 250V ~ T125 1E4 (VDE)
Dielectric Strength:	1000VAC for 1 minute
Insulation Resistance:	10 <sup>8</sup> ohms min at 500VDC
Initial Contact Resistance:	.020 ohms max
Temperature Range:	-20°C to +85°C





## Dimensions



Z = Panel Thickness

## Recommended Panel Cut-Out Dimensions

inches (mm)

Dim. Z	Dim. X	Dim. Y
.030 to .049 (0.75 to 1.25)	1.18 (30.0)	.867 (22.0)
.049 to .079 (1.25 to 2.00)	1.19 (30.2)	.867 (22.0)
.079 to .118 (2.00 to 3.00)	1.20 (30.5)	.867 (22.0)

## Ordering Information

<b>WR</b>	<b>G</b>	<b>3</b>	<b>2</b>	<b>F 2</b>	<b>F B</b>	<b>B N</b>	<b>N</b>
<b>Series</b>	<b>Code</b> <b>Contact Rating</b>	<b>Code</b> <b>Circuitry</b>	<b>Code</b> <b>Switch Function</b>	<b>Code</b> <b>Actuator Type</b>	<b>Code</b> <b>Housing Color</b>	<b>Code</b> <b>Lighted</b>	<b>Code</b> <b>Splashproof</b>
	G 16A 125/250VAC 1/4 HP (UL & CSA) 16 (4) A 250V - T125 1E4 (VDE)	2 16A 125 VAC 1/4HP 3 16A 250 VAC 1/4HP	2 On - Off 3 On - On 4 On - Off - On 5 (On) - Off 6 (On) - On 7 (On) - Off - (On) 8 (On) - Off - On	2 Curve 5 Flat Actuator 7 Curve - Dual Actuator	E Charcoal Grey Y Grey B Black W White C Brown	N Non-Lighted L Lighted (Bulb 125VAC) E Lighted (Bulb 250VAC) F Lighted 5VDC Incandescent G Lighted 6VDC Incandescent H Lighted 12VDC Incandescent	N No Rocker Boot S Rocker Boot
	<b>Code</b> <b>Terminal Type</b>			<b>Code</b> <b>Actuator Marking</b>	<b>Code</b> <b>Actuator Color</b>		
	F .250" (6.35mm) Quick-Connect			B Blank C LO II D OFF NO E O I F O - G . H IO II	Y Grey B Black G Green A Amber R Red W White C Brown E Charcoal Grey		

## Examples of Common Part Numbers and Descriptions

Part Number	Circuitry	Switch Function	Terminal Type	Actuator/ Housing Color	Legend Marking
WRG32F2FBBNN		On-Off	.250" (6.35mm) Quick-Connect	Black/Black	
WRG34F2HBBNN		On-Off-On	.250" (6.35mm) Quick-Connect	Black/Black	
WRG32F2BBRLN		On-Off-Lighted	.250" (6.35mm) Quick-Connect	Red/Black	