

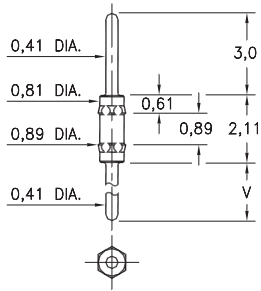
# MALE PCB PINS

## PRINTED CIRCUIT PINS

### 4006

4006-X-00-XX-00-00-03-0

Hex press-fit in 0,86 mounting hole

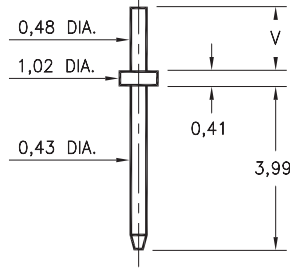


Basic Part Number	Length V
4006-0	3,0
4006-1	4,78
4006-2	7,32

### 3121

3121-X-00-XX-00-00-08-0

Solder mount in 0,58 mounting hole  
Material is annealed.

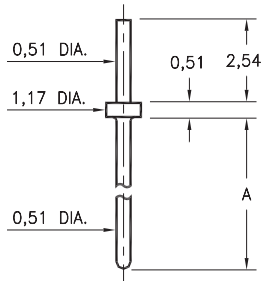


Basic Part Number	Substrate Thickness	Length V
3121-1	0,64	1,55
3121-2	1,02	1,91

### 3128

3128-X-00-XX-00-00-08-0

Solder mount in 0,61 min. mounting hole

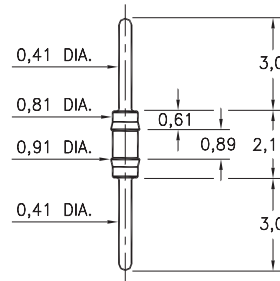


Basic Part Number	Length A
3128-1	6,35
3128-2	10,8
3128-3	13,34
3128-4	14,22
3128-5	23,62

### 3006

3006-0-00-XX-00-00-03-0

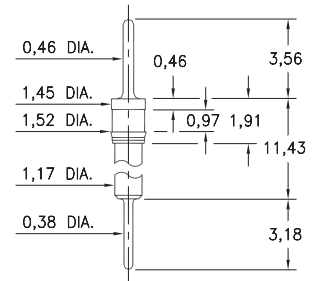
Press-fit in 0,86 mounting hole



### 8885

8885-0-00-XX-00-00-03-0

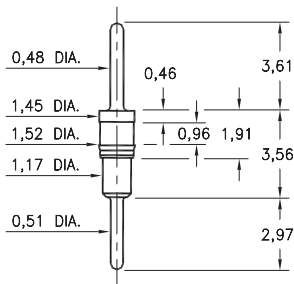
Press-fit in 1,45 mounting hole



### 6218

6218-0-00-XX-00-00-03-0

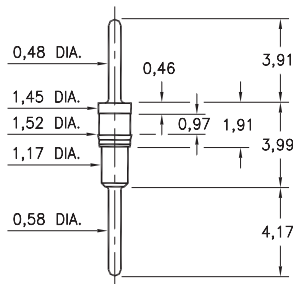
Press-fit in 1,45 mounting hole



### 5012

5012-0-00-XX-00-00-03-0

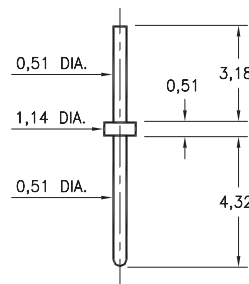
Press-fit in 1,45 mounting hole



### 9081

9081-0-00-XX-00-00-08-0

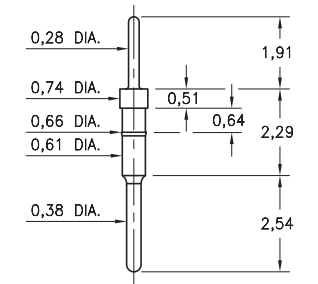
Solder mount in 0,61 mounting hole



### 3039

3039-0-00-15-00-00-03-0

Press-fit in .025 mounting hole



#### SPECIFICATIONS:

**Pin Material:** Brass Alloy 360, 1/2 Hard  
(Except where noted)

**Dimensions:** Millimeters

**Tolerances On:** Lengths:  $\pm 0,13$   
Diameters:  $\pm 0,051$   
Angles:  $\pm 2^\circ$



ORDER CODE: XXXX - X - 00 - XX - 00 - 00 - XX - 0

BASIC PART #

SPECIFY PIN FINISH:

- 01 5,08 $\mu$ m TIN/LEAD OVER NICKEL
- ◆ 80 5,08 $\mu$ m TIN OVER NICKEL (RoHS)
- ◆ 15 0,25 $\mu$ m GOLD OVER NICKEL (RoHS)
- ◆ 21 0,51 $\mu$ m GOLD OVER NICKEL (RoHS)
- ◆ 34 1,27 $\mu$ m GOLD OVER NICKEL (RoHS)



# Mouser Electronics

Authorized Distributor

Click to View Pricing, Inventory, Delivery & Lifecycle Information:

## Mill-Max:

[3128-2-00-80-00-00-08-0](#) [3006-0-00-34-00-00-03-0](#) [3128-2-00-21-00-00-08-0](#) [3128-2-00-34-00-00-08-0](#) [3128-3-00-34-00-00-08-0](#) [3128-4-00-21-00-00-08-0](#) [4006-0-00-21-00-00-03-0](#) [4006-2-00-34-00-00-03-0](#) [5012-0-00-15-00-00-03-0](#)  
[5012-0-00-21-00-00-03-0](#)