

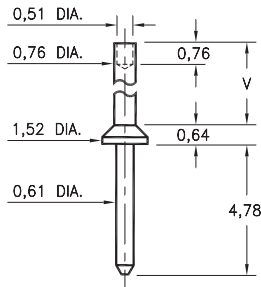
MALE PCB PINS

PRINTED CIRCUIT PINS

3117

3117-X-00-XX-00-00-08-0

Swage mount in 0,89 hole

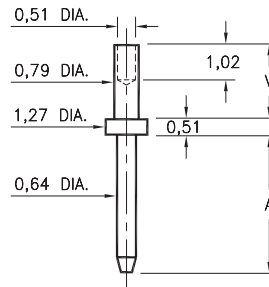


Basic Part Number	Board Thickness	Length V
3117-1	0,79	1,19
3117-2	1,57	1,98
3117-3	2,39	2,79
3117-4	3,18	3,58

3114/3115

311X-X-00-XX-00-00-08-0

Swage mount in 0,89 mounting hole

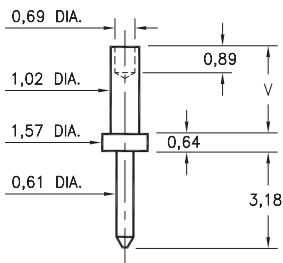


Basic Part Number	Board Thickness	Length A	Length V
3114-1	0,79	3,81	1,30
3114-2	1,57	3,81	2,08
3115-1	0,79	7,62	1,30
3115-2	1,57	7,62	2,08

3112

3112-X-00-XX-00-00-08-0

Swage mount in 1,09 hole

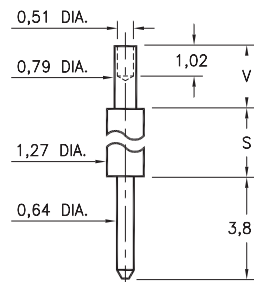


Basic Part Number	Board Thickness	Length V
3112-1	0,79	1,30
3112-2	1,57	2,08
3112-3	2,39	2,87

3118/3119

311X-X-00-XX-00-00-08-0

Swage mount in 0,89 hole

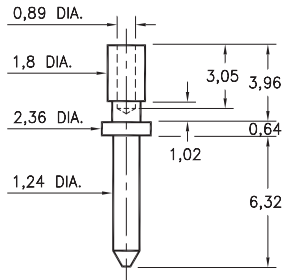


Basic Part Number	Board Thickness	Length S	Length V
3118-1	0,79	4,32	1,30
3118-2	1,57	4,32	2,08
3119-1	0,79	10,67	1,30
3119-2	1,57	10,67	2,08

3139

3139-0-00-XX-00-00-08-0

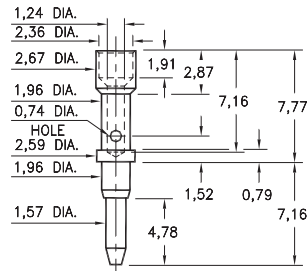
Wire crimp termination. Accepts wire sizes 24 AWG Max. / 28 AWG Min.



3602

3602-0-07-XX-00-00-08-0

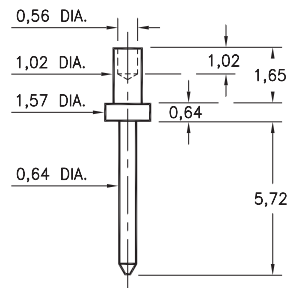
Annealed
Wire crimp termination. Accepts wire sizes 20 AWG Max. / 24 AWG Min.



3131

3131-1-00-XX-00-00-08-0

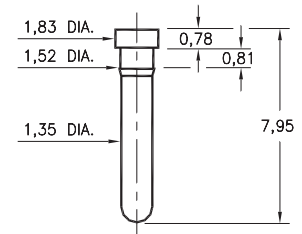
Swage mount in 1,09 hole



0912

0912-0-00-XX-00-00-03-0

Press-fit in 1,45 mounting hole



SPECIFICATIONS:

Pin Material: Brass Alloy 360, 1/2 Hard
(Except swage pins which are annealed)

Dimensions: Millimeters

Tolerances On: Lengths: $\pm 0,13$
Diameters: $\pm 0,051$
Angles: $\pm 2^\circ$



ORDER CODE: XXXX - X - 0X - XX - 00 - 00 - XX - 0

BASIC PART #

SPECIFY PIN FINISH:

- 01 5,08 μ m TIN/LEAD OVER NICKEL
- ◆ 80 5,08 μ m TIN OVER NICKEL (RoHS)
- ◆ 15 0,25 μ m GOLD OVER NICKEL (RoHS)
- ◆ 21 0,51 μ m GOLD OVER NICKEL (RoHS)
- ◆ 34 1,27 μ m GOLD OVER NICKEL (RoHS)



Mouser Electronics

Authorized Distributor

Click to View Pricing, Inventory, Delivery & Lifecycle Information:

Mill-Max:

[3119-2-00-01-00-00-08-0](#) [3117-3-00-01-00-00-08-0](#) [3117-2-00-01-00-00-08-0](#) [3114-2-00-01-00-00-08-0](#) [3112-2-00-01-00-00-08-0](#) [3112-1-00-01-00-00-08-0](#) [3602-0-07-80-00-00-08-0](#) [3119-1-00-80-00-00-08-0](#) [3118-2-00-80-00-00-08-0](#) [3118-1-00-80-00-00-08-0](#) [3117-4-00-80-00-00-08-0](#) [3117-3-00-80-00-00-08-0](#) [3117-2-00-80-00-00-08-0](#) [3112-3-00-80-00-00-08-0](#) [3112-1-00-80-00-00-08-0](#) [0912-0-00-21-00-00-03-0](#) [3112-1-00-34-00-00-08-0](#) [3112-2-00-15-00-00-08-0](#) [3112-3-00-34-00-00-08-0](#) [3114-1-00-34-00-00-08-0](#) [3117-1-00-34-00-00-08-0](#) [3117-2-00-34-00-00-08-0](#) [3117-3-00-21-00-00-08-0](#) [3117-3-00-34-00-00-08-0](#) [3117-4-00-21-00-00-08-0](#) [3117-4-00-34-00-00-08-0](#) [3118-1-00-21-00-00-08-0](#) [3118-1-00-34-00-00-08-0](#) [3118-2-00-21-00-00-08-0](#) [3118-2-00-34-00-00-08-0](#) [3119-1-00-21-00-00-08-0](#) [3119-1-00-34-00-00-08-0](#) [3119-2-00-34-00-00-08-0](#) [3131-1-00-15-00-00-08-0](#) [3131-1-00-34-00-00-08-0](#)