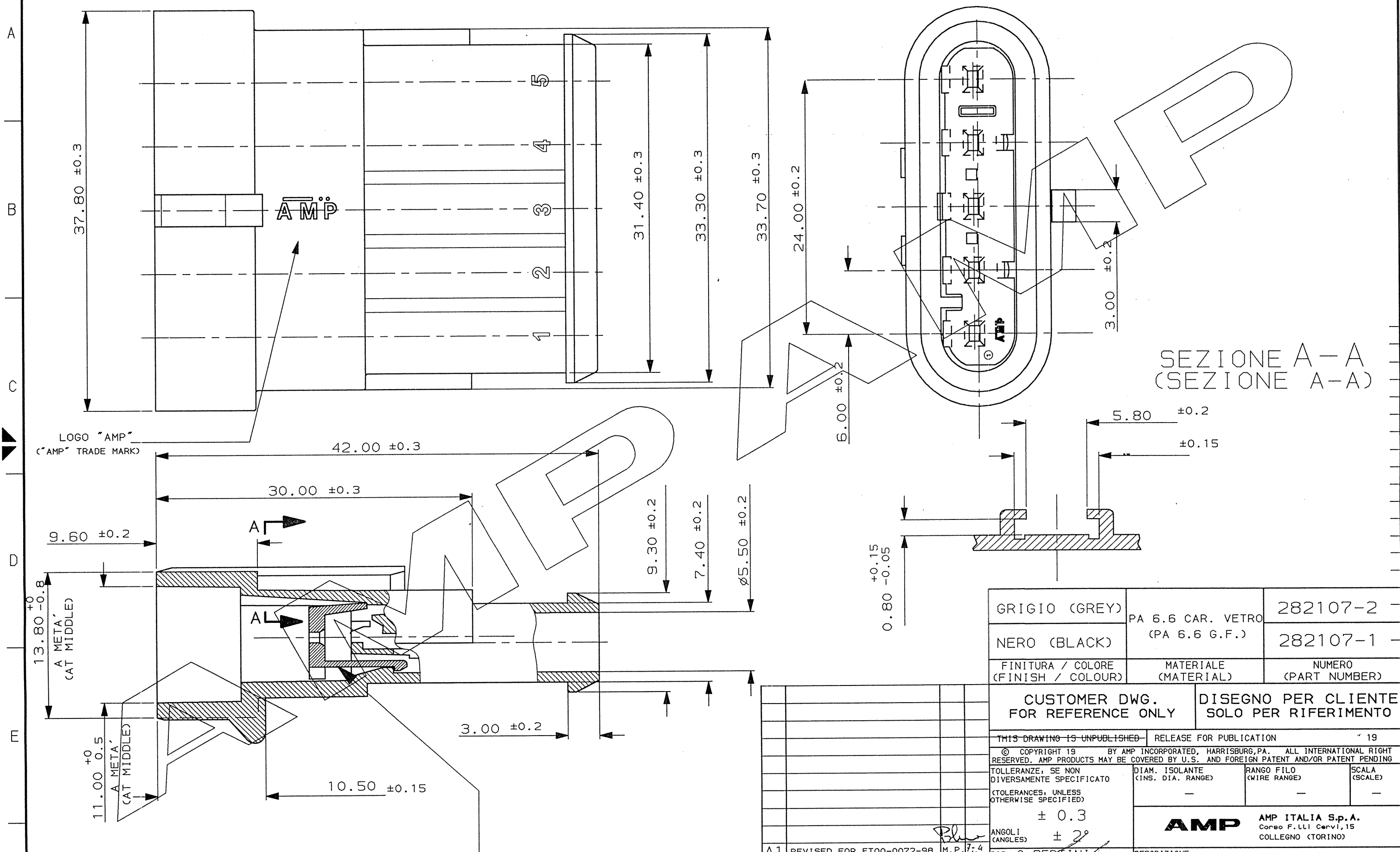


SCALA NON IMPEGNATIVA
(DO NOT SCALE)
DIMENSIONI IN mm
(DIMENSIONS IN mm)

METRIC

PROIEZIONE EUROPEA
(EUROPEAN PROJECTION)



SEZIONE A-A
(SEZIONE A-A)

LOGO "AMP"
("AMP" TRADE MARK)

A META'
(CAT MIDDLE)

A META'
(CAT MIDDLE)

GRIGIO (GREY)	PA 6.6 CAR. VETRO	282107-2
NERO (BLACK)	(PA 6.6 G.F.)	282107-1
FINITURA / COLORE (FINISH / COLOUR)	MATERIALE (MATERIAL)	NUMERO (PART NUMBER)

CUSTOMER DWG. FOR REFERENCE ONLY
DISEGNO PER CLIENTE SOLO PER RIFERIMENTO

THIS DRAWING IS UNPUBLISHED - RELEASE FOR PUBLICATION		19
© COPYRIGHT 19 BY AMP INCORPORATED, HARRISBURG, PA. ALL INTERNATIONAL RIGHT RESERVED. AMP PRODUCTS MAY BE COVERED BY U.S. AND FOREIGN PATENT AND/OR PATENT PENDING		
TOLLERANZE, SE NON DIVERSAMENTE SPECIFICATO (TOLERANCES, UNLESS OTHERWISE SPECIFIED)	DIAM. ISOLANTE (INS. DIA. RANGE)	RANGO FILO (WIRE RANGE)
± 0.3	-	-

AMP AMP ITALIA S.p.A.
Corso F.lli Cervi, 15
COLLENO (TORINO)

DESCRIZIONE (DESCRIPTION) 5 POS TAB ASS'Y
AMP SUPERSEAL 1.5 SERIES CONNECTORS

LOC. SIZE	NUMERO (DWG NO)	REV.	FOGLIO (SHEET)
IA3	C-282107	A111	11

REV.	REVISIONI	DIS. DATA	APP. (APP.)
A1	REVISED FOR ET00-0072-98	M.P. 7-4 '98	
A	ADDED NEW POLARIZ.KEY (0146-94)	C.B. 30-5 '94	
5	UP-DATED	C.B. 10 '92	
4	ADDED PN ...-2	C.B. 8-92	

AGGANCIO SECONDARIO, COLORE ROSSO, PRE-ASSEMBLATO
(SECONDARY LOCK, RED COLOUR, IN PRE-ASSEMBLED POSITION)

TRIBUZIONE
(PRINT DIST.)