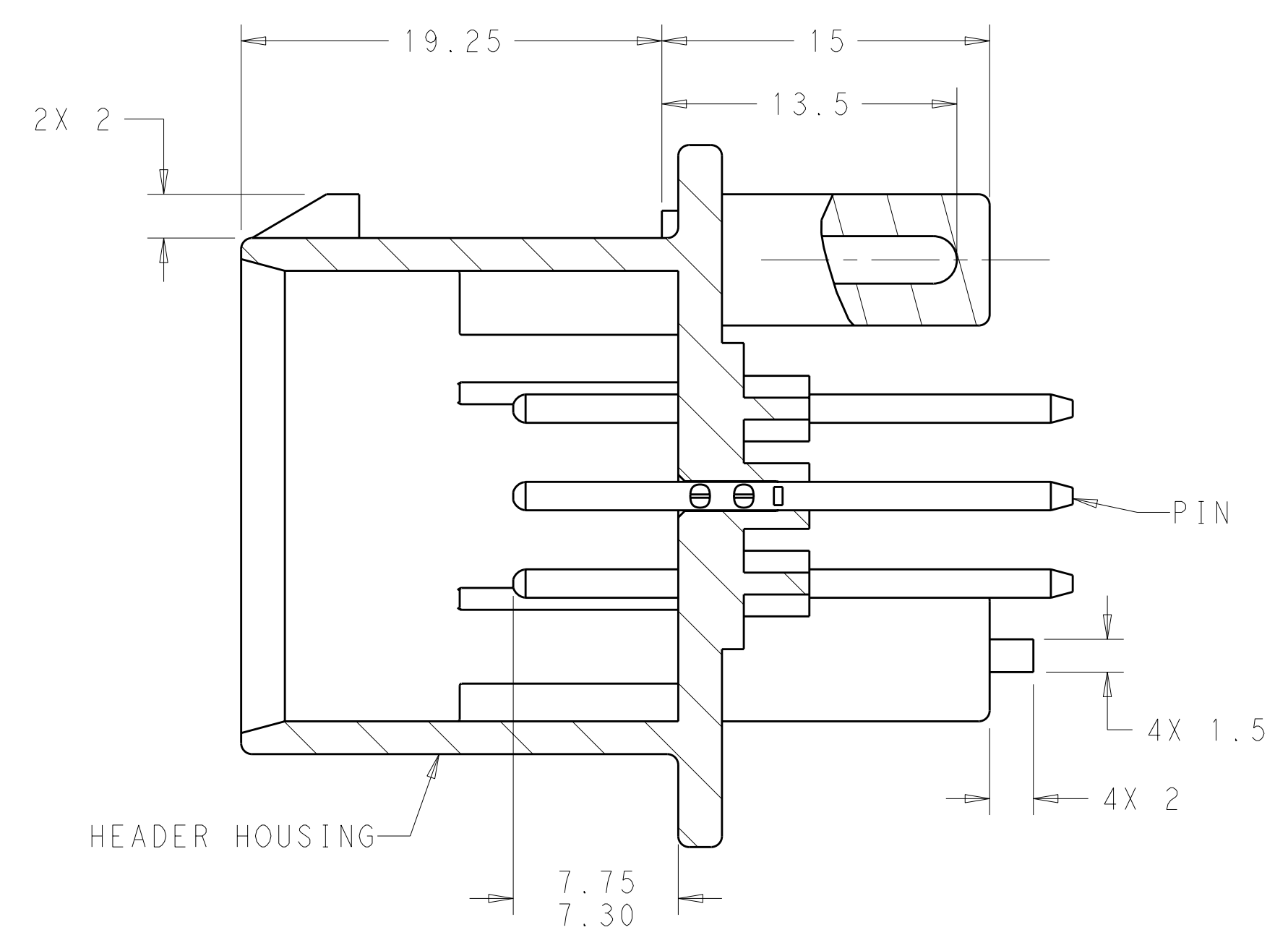
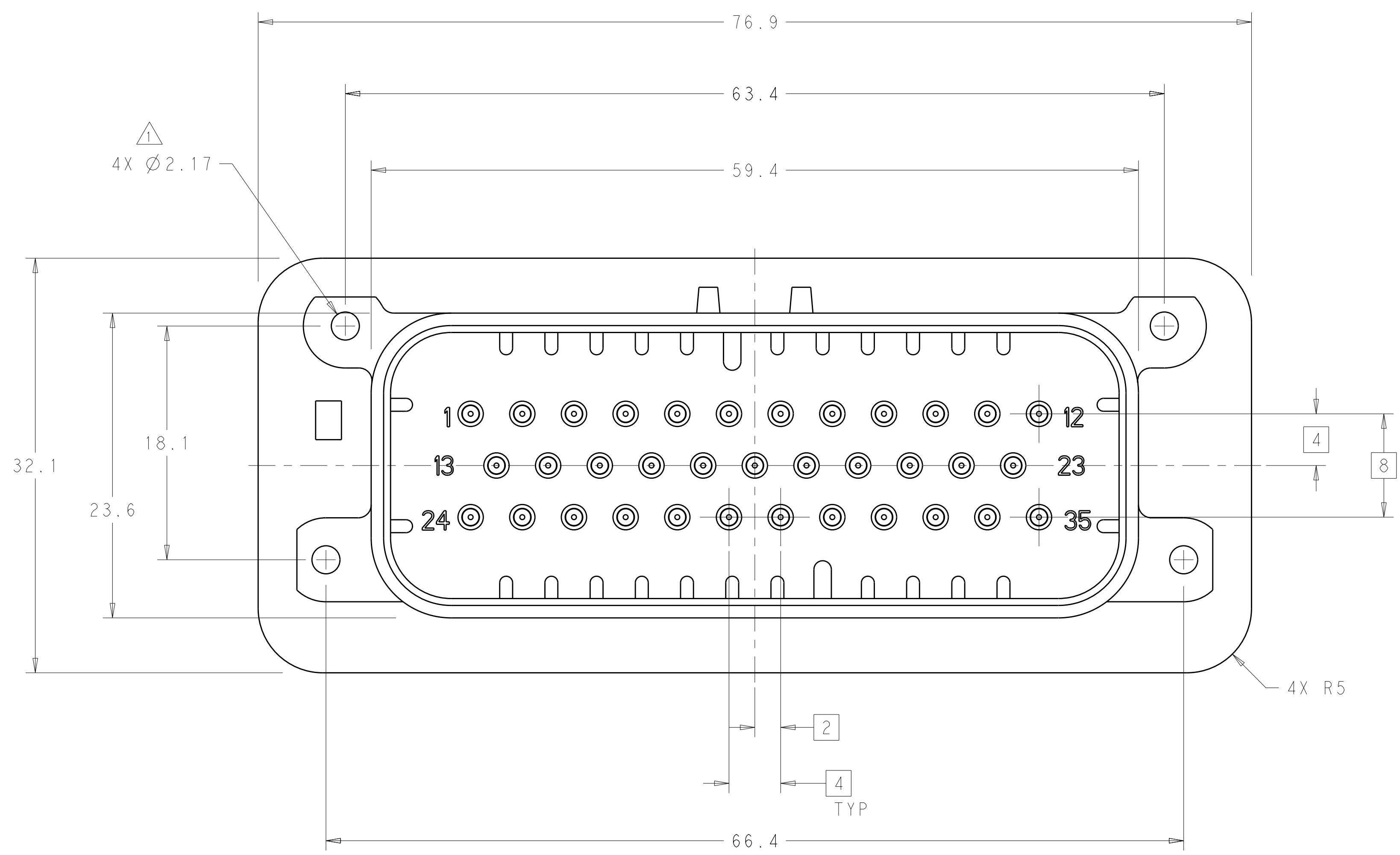
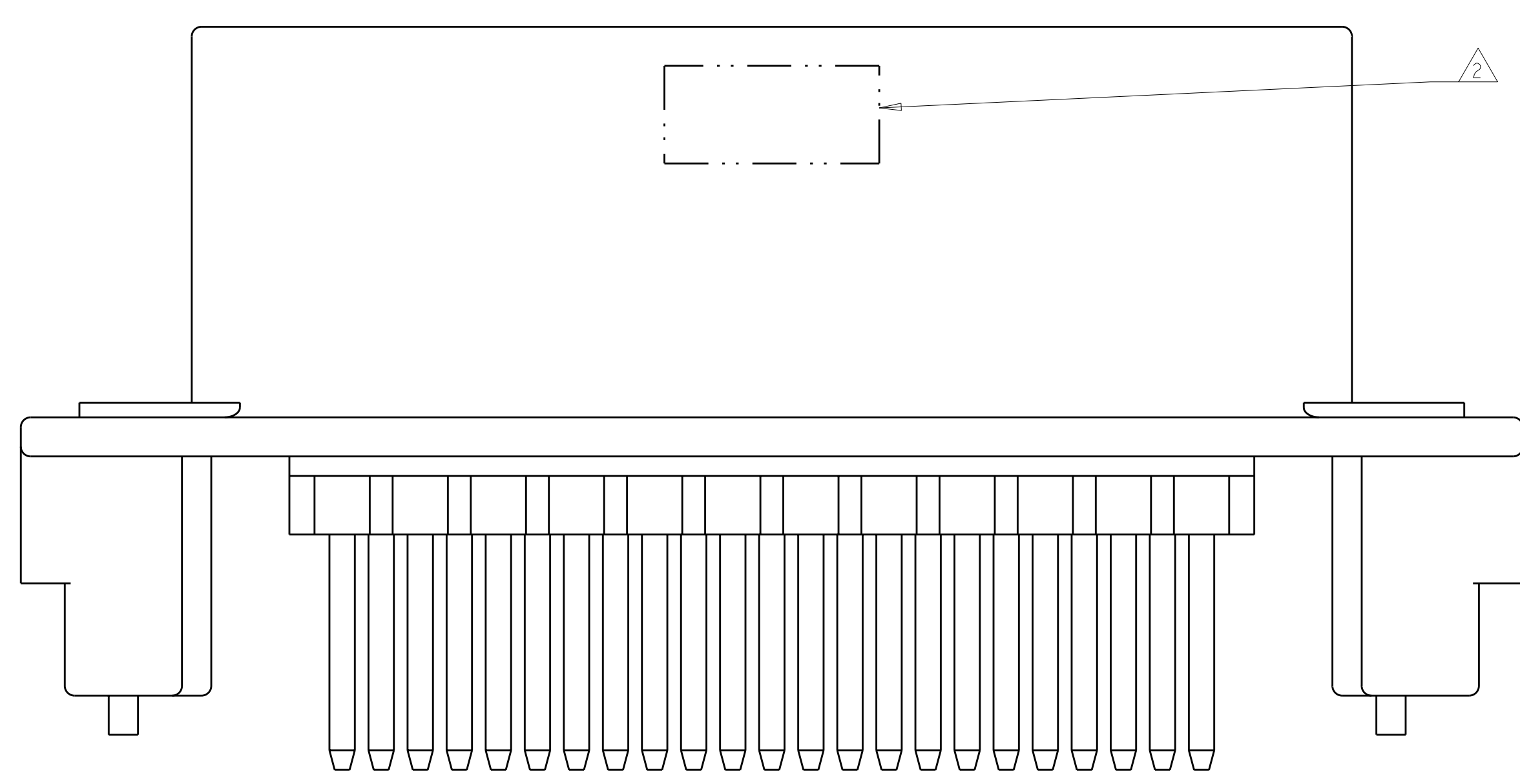


LOC	DIST	REV	DATE	BY	APPD
GE	00	A3	27APR2010	DCS	DCS
REVISIONS			DESCRIPTION	DATE	DWN
			REVISED PER ECO-10-006160	27APR2010	DCS

- 1 ACCEPTS #4 SELF TAPPING THREAD CUTTING SCREWS OR METRIC EQUIVALENT. DRIVE TO 0.6 N-m MAX
- 2 DATE CODE IN THIS LOCATION USING 5 DIGIT CODE  
FIRST 2 DIGITS = YEAR, SECOND 2 DIGITS = WEEK  
LAST DIGIT = DAY.
- 3 MATERIALS: HEADER HOUSING - GLASS FILLED PBT  
PINS - TIN OR GOLD PLATED BRASS
- 4 HOUSING COLORS ARE MECHANICALLY KEYPED TO MATE ONLY WITH IDENTICALLY COLORED PLUG ASSEMBLIES.
- 5. HEADER MATES TO PLUG ASSEMBLY 776164 WHICH USES REELED TERMINAL 770520 OR LOOSE PIECE TERMINAL 770854



SECTION A-A

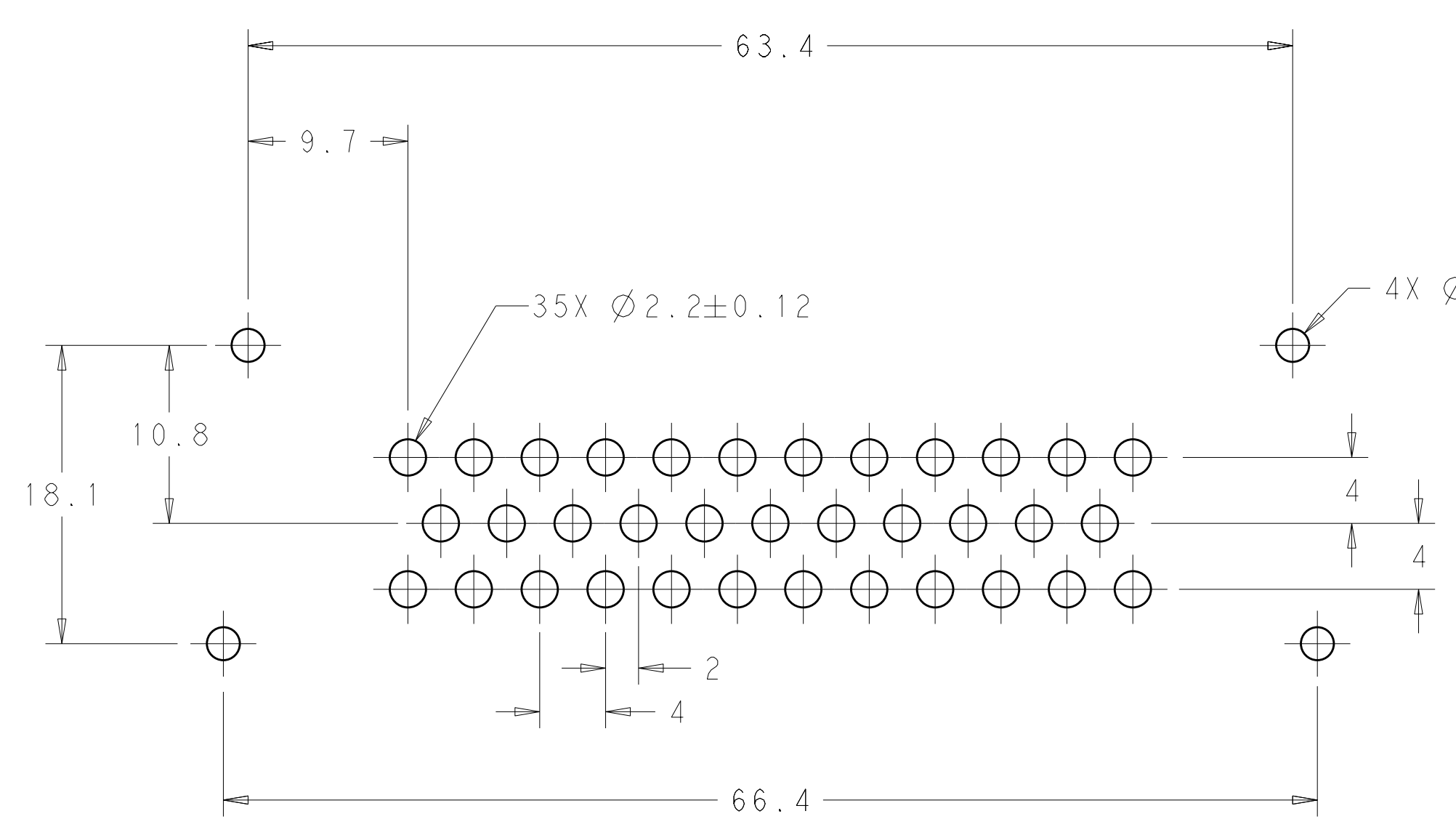


776230-1 & 1-776230-1 SHOWN

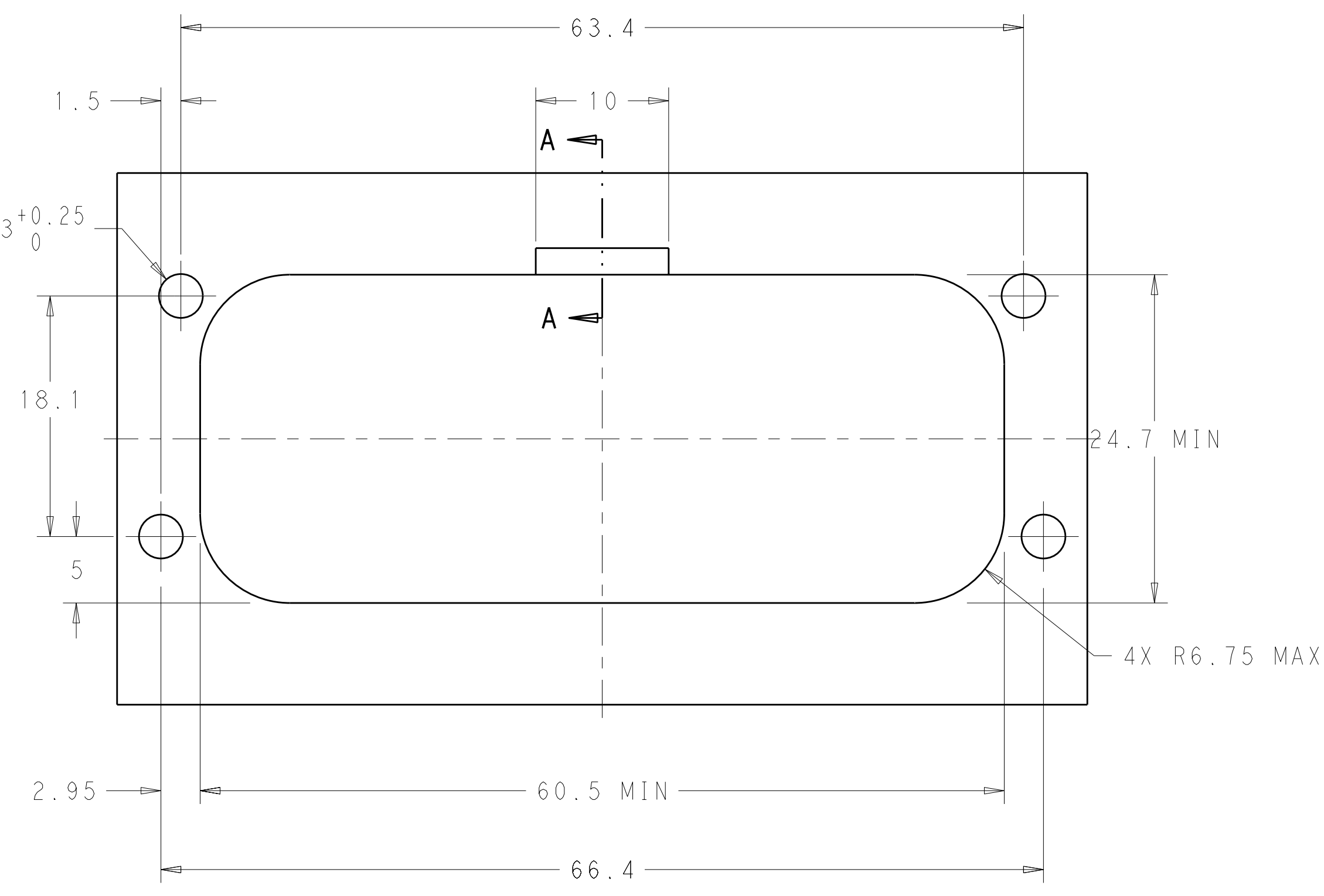
HEADER COLOR	PLATING	PART NUMBER
BLUE	DURAGOLD	1-776230-5
GRAY	DURAGOLD	1-776230-4
NATURAL	DURAGOLD	1-776230-2
BLACK	DURAGOLD	1-776230-1
BLUE	TIN	776230-5
GRAY	TIN	776230-4
NATURAL	TIN	776230-2
BLACK	TIN	776230-1

DIMENSIONS: mm 		TOLERANCES UNLESS OTHERWISE SPECIFIED: 9 PLC ± 1 PLC ±0.2 2 PLC ±0.13 3 PLC ± 4 PLC ± ANGLES ±4° FINISH		DWN: D. STRAUSSER 04FEB2010 CHK: D. STRAUSSER 22MAR2010 APVD: D. STRAUSSER 27APR2010 PRODUCT SPEC: 108-1329 APPLICATION SPEC: 114-16016 WEIGHT: - CUSTOMER DRAWING		Tyco Electronics Harrisburg, PA 17105-3608 NAME: ASSEMBLY, HEADER, 35 POSITION, VERTICAL, AMPSEAL SIZE: CAGE CODE DRAWING NO: A100779C-776230 RESTRICTED TO: - SCALE: 4:1 SHEET 1 OF 2 REV A3	
-----------------------	--	--	--	--	--	--	--

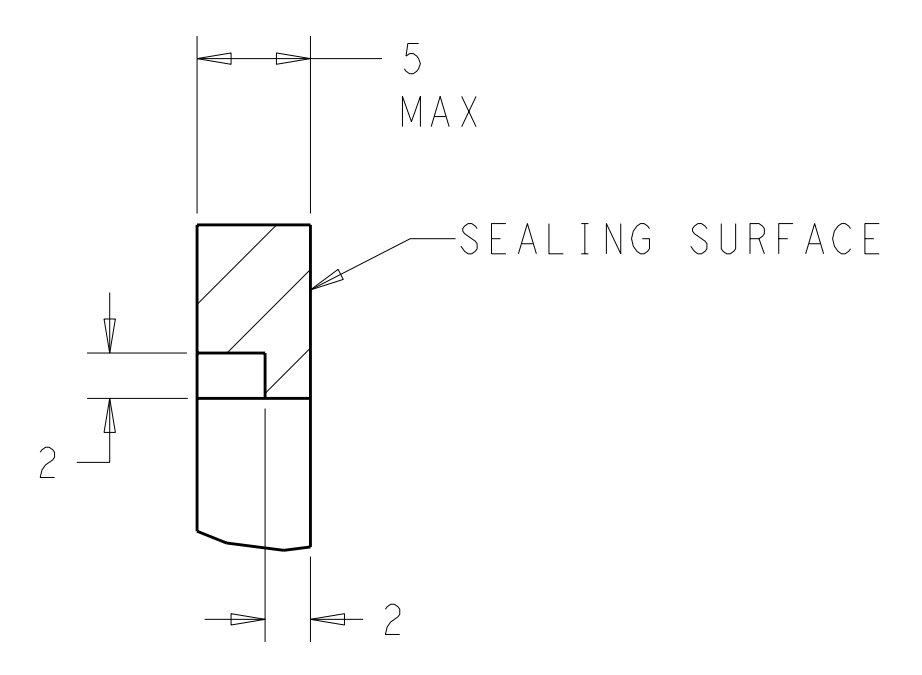
LOC	DIST	REV	DATE	DESCRIPTION	DATE	BY	APPD
GE	00			SEE SHEET 1			



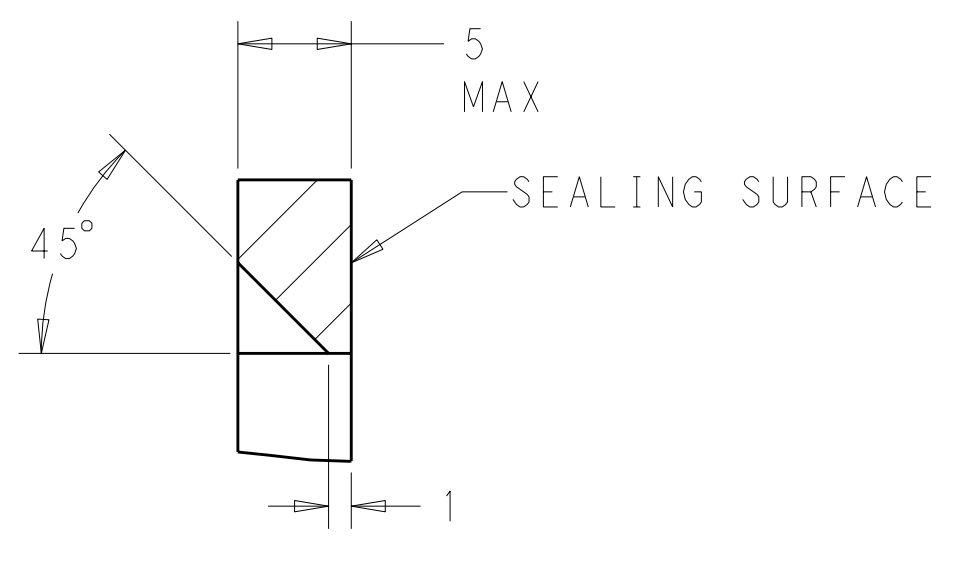
RECOMMENDED P.C. BOARD LAYOUT  
 FOR 1.57 THICK P.C. BOARD



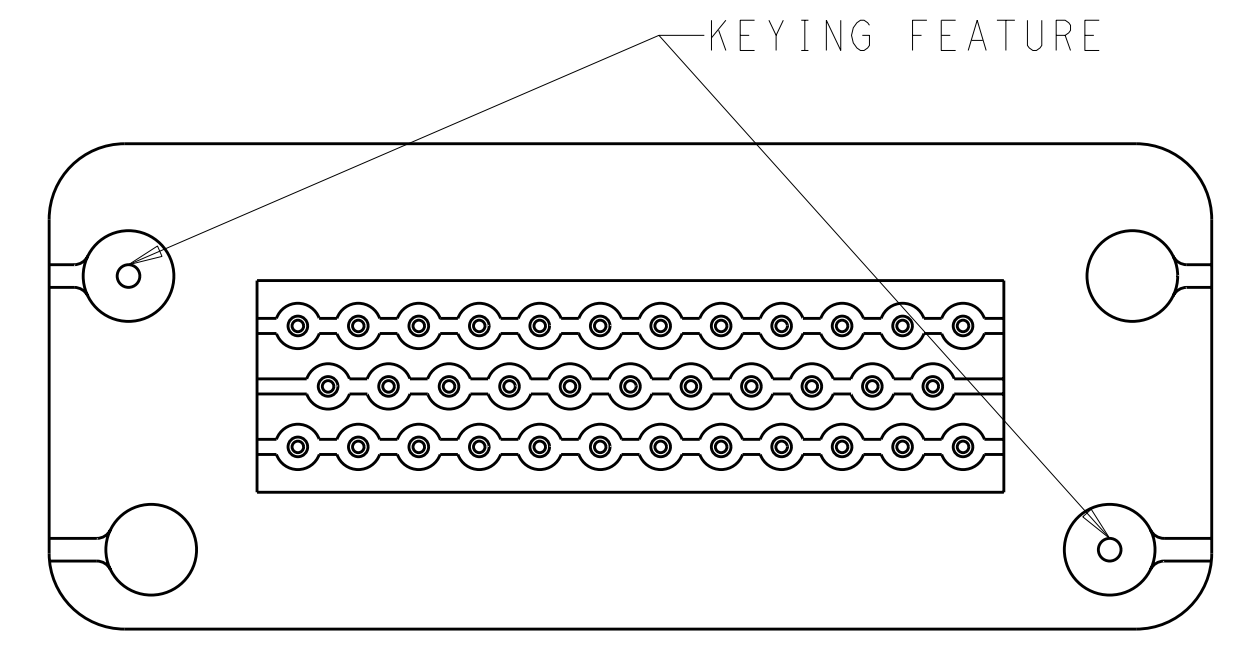
RECOMMENDED MOUNTING HOLE LAYOUT  
 FOR 5.0 MAX THICK PANEL



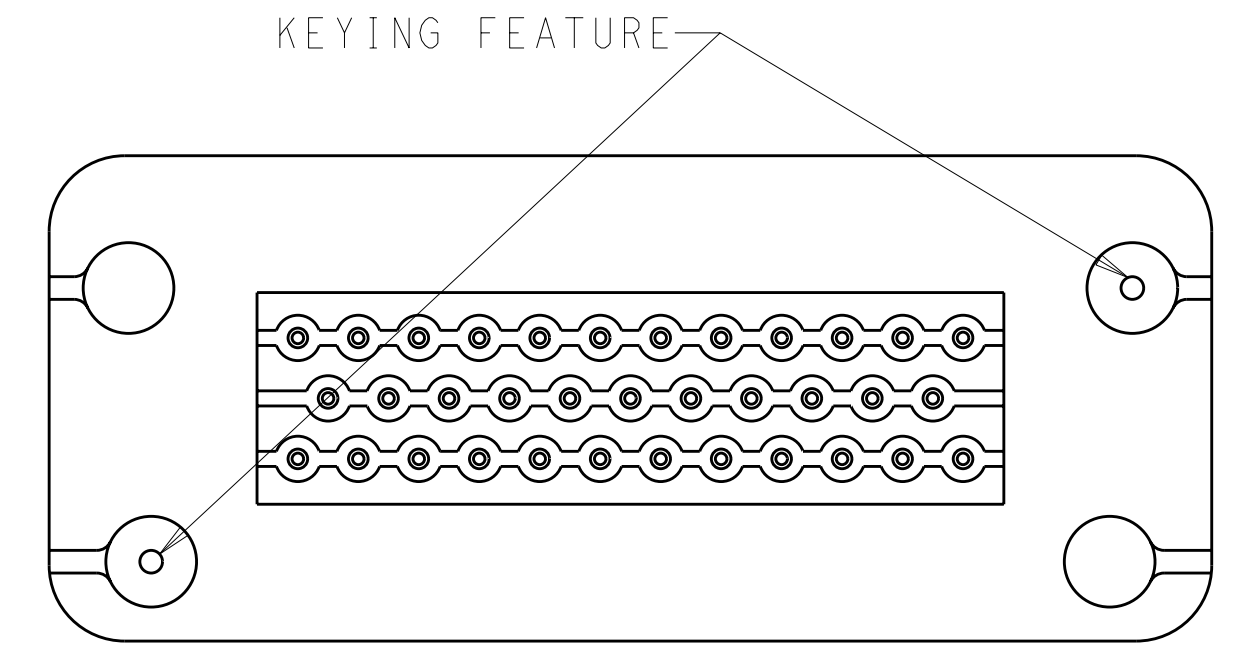
SECTION A-A  
 OPTIONAL CONSTRUCTION IF PANEL  
 THICKNESS IS GREATER THAN 2.0



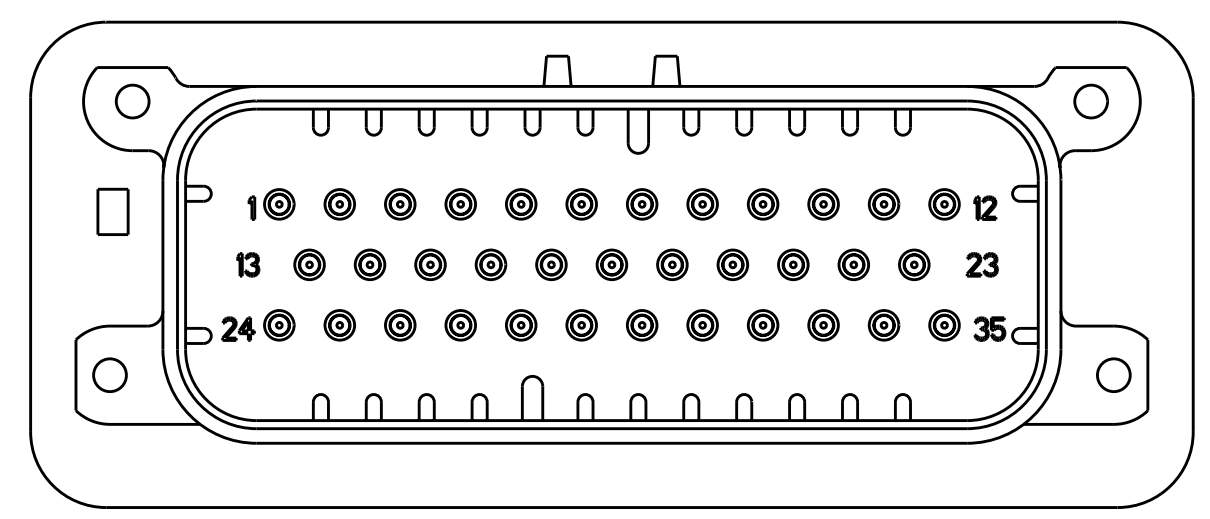
SECTION A-A  
 OPTIONAL CONSTRUCTION IF PANEL  
 THICKNESS IS GREATER THAN 2.0



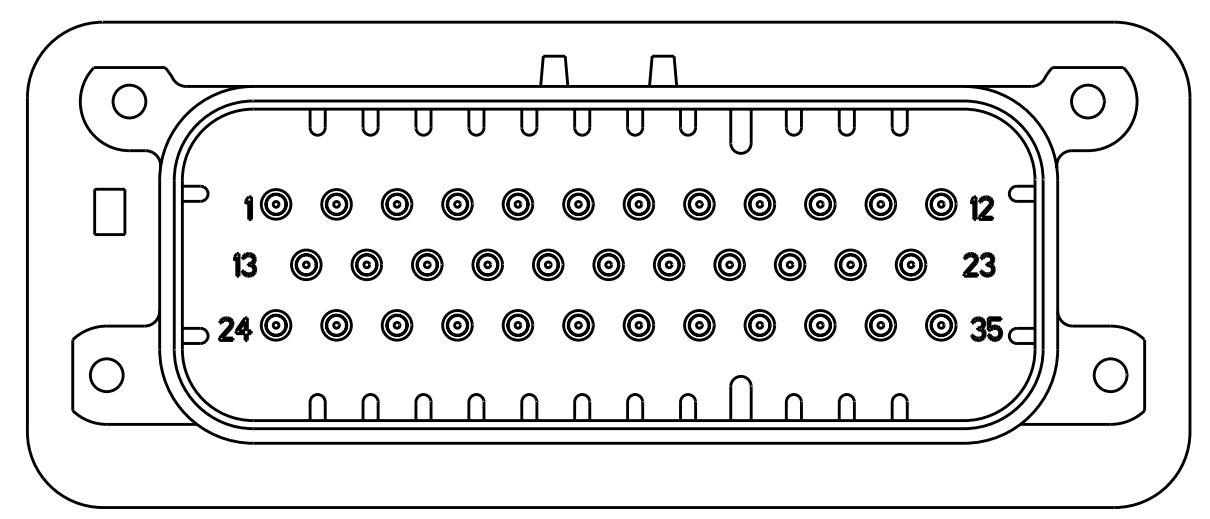
KEYING FOR 776230-1 AND 776230-4  
 SCALE 2:1



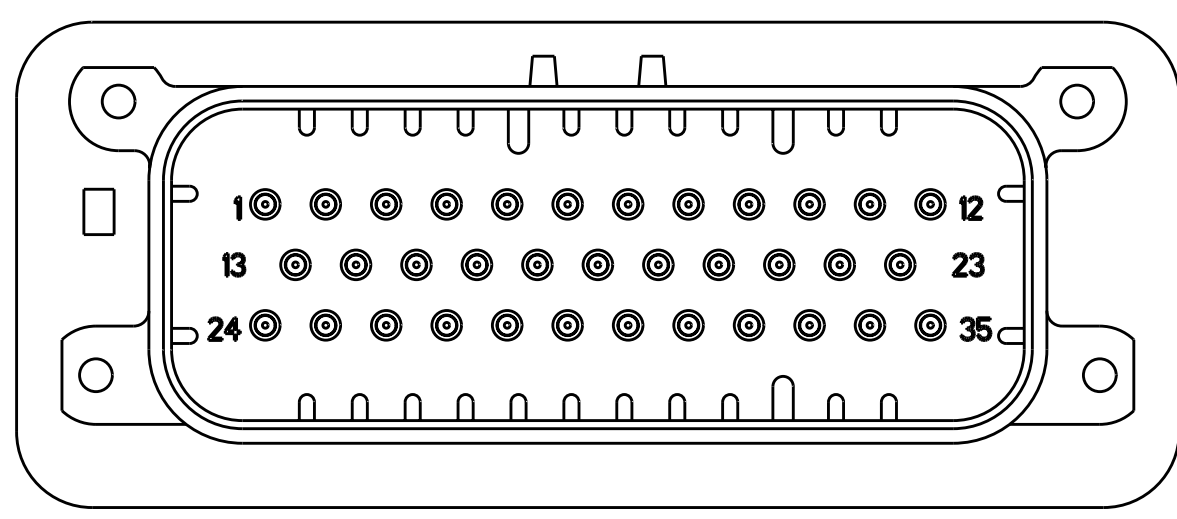
KEYING FOR 776230-2 AND 776230-5  
 SCALE 2:1



776230-2 & 1-776230-2  
 KEY LOCATION  
 SCALE 2:1



776230-4 & 1-776230-4  
 KEY LOCATION  
 SCALE 2:1



776230-5 & 1-776230-5  
 KEY LOCATION  
 SCALE 2:1

<small>THE INFORMATION IS CONTAINED HEREIN IS UNCLASSIFIED UNLESS INDICATED OTHERWISE. FOR INFORMATION ON THIS DRAWING, CONTACT THE DRAWING ENGINEER OR THE CUSTOMER SERVICE DEPARTMENT. THIS IS SUBJECT TO CHANGE WITHOUT NOTICE AND WITHOUT OBLIGATION. SHOULD BE CONTACTED FOR THE LATEST REVISION.</small>		DWN: D. STRAUSSER 04FEB2010 CHK: D. STRAUSSER 22MAR2010 APVD: D. STRAUSSER 27APR2010	Tyco Electronics Harrisburg, PA 17105-3608
DIMENSIONS: mm	TOLERANCES UNLESS OTHERWISE SPECIFIED: 9 PLC ± 1 PLC ±0.2 5 PLC ±0.13 4 PLC ± ANGLES ±4° FINISH	PRODUCT SPEC: 108-1329 APPLICATION SPEC: 114-16016 WEIGHT: - CUSTOMER DRAWING	NAME: ASSEMBLY, HEADER, 35 POSITION, VERTICAL, AMPSEAL SIZE: A100779 CAGE CODE: C-776230 SCALE: 4:1 SHEET 2 OF 2 REV A3