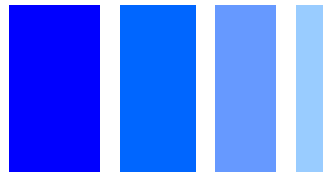


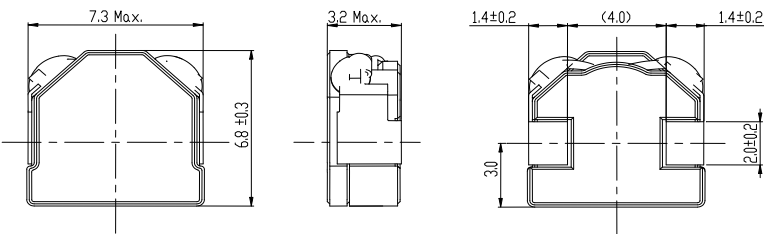
# SMD Power Inductor CDEIR6D31F



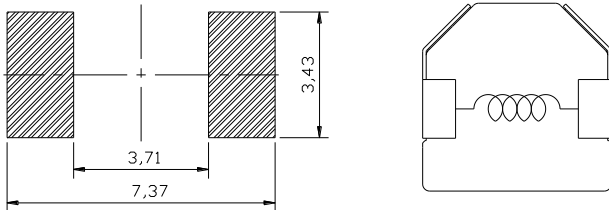
## Description

- Ferrite core construction.
- Magnetically shielded.
- L × W × H: 7.3 × 7.1 × 3.2 mm Max.
- Product weight: 0.53g(Ref.)
- Moisture Sensitivity Level: 1
- RoHS compliance.

## Dimension - [mm]



## Land pattern and Schematics - [mm]



## Environmental Data

- Operating temperature range: -40°C ~ +105°C (including coil's self temperature rise)
- Storage temperature range: -40°C ~ +105°C
- Solder reflow temperature: 260 °C peak.

## Packaging

- Carrier tape and reel packaging.
- 13.0" diameter reel
- 1500pcs per reel

## Applications

- Ideally used in HDD, Notebook and Mobile computer etc.

## Electrical Characteristics

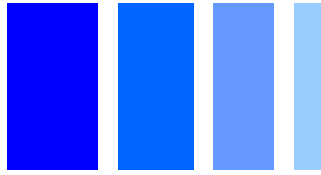
Part No.	Stamp	Inductance (μH) [Within] ※1	D.C.R.(mΩ) [Max.] (Typ.) (at 20°C)	saturation current (A) ※2	Temperature rise current (A) ※3
CDEIR6D31FHF-1R0NC	1R0	1.0 ± 30%	8.8(7.3)	7.7(9.7)	7.4(8.5)
CDEIR6D31FHF-1R5NC	1R5	1.5 ± 30%	9.6(8.0)	6.8(8.5)	6.8(7.9)
CDEIR6D31FHF-2R2MC	2R2	2.2 ± 20%	12(10)	6.0(7.5)	6.5(7.4)
CDEIR6D31FHF-3R3MC	3R3	3.3 ± 20%	19(15)	4.8(6.0)	5.5(6.3)
CDEIR6D31FHF-4R7MC	4R7	4.7 ± 20%	26(21)	4.0(5.0)	4.7(5.4)
CDEIR6D31FHF-5R6MC	5R6	5.6 ± 20%	29(23)	3.5(4.4)	4.4(5.0)
CDEIR6D31FHF-6R8MC	6R8	6.8 ± 20%	40(32)	3.0(3.8)	3.5(4.0)
CDEIR6D31FHF-8R2MC	8R2	8.2 ± 20%	43(34)	2.8(3.5)	3.6(4.1)
CDEIR6D31FHF-100MC	100	10.0 ± 20%	66(53)	2.6(3.2)	2.6(2.9)
CDEIR6D31FHF-120MC	120	12.0 ± 20%	76(61)	2.4(3.0)	2.2(2.5)

※1. Measuring condition: at 100kHz.

※2. Saturation current: The value of D.C. current when the inductance decreases to 70% of it's nominal value.

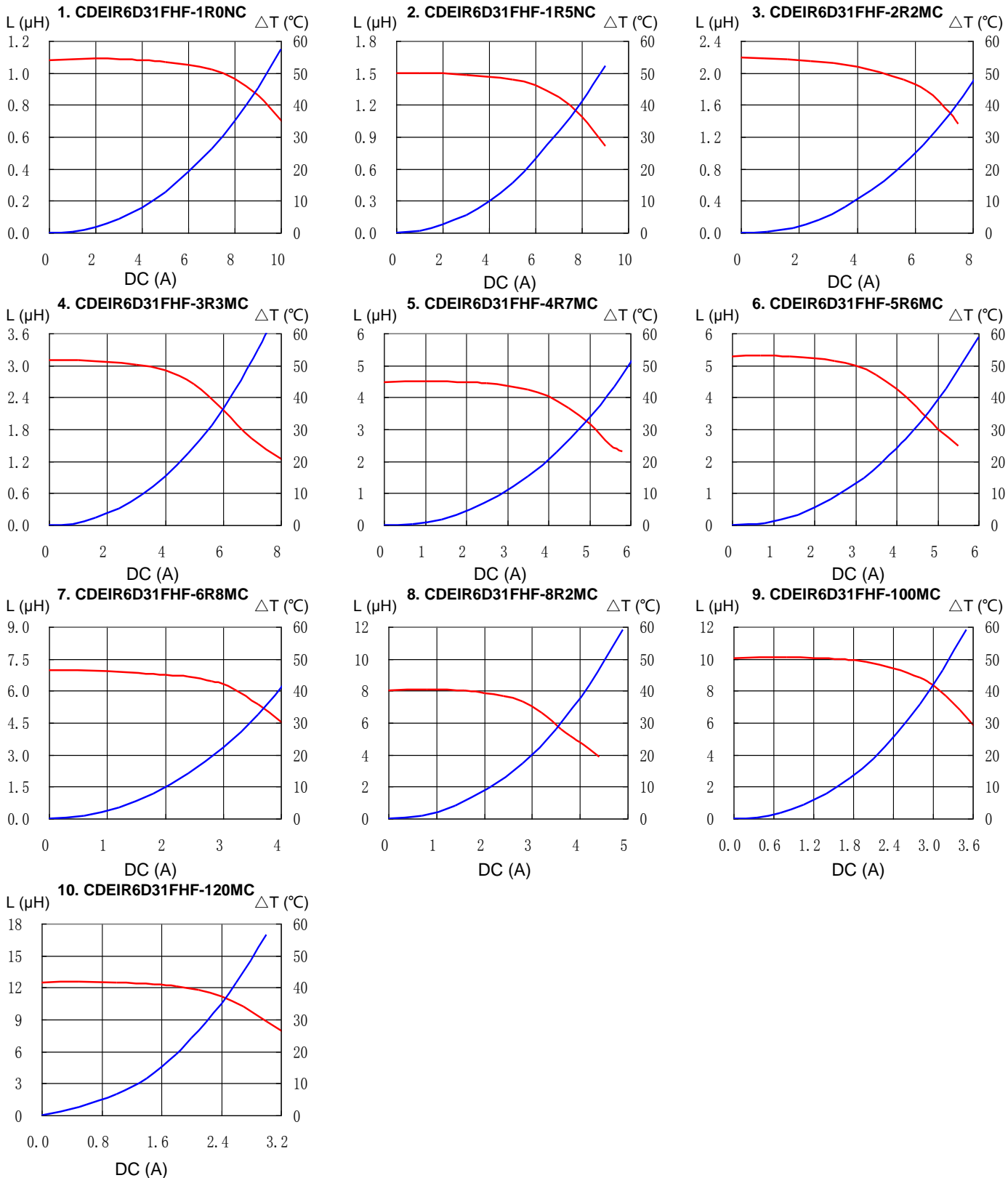
※3. Temperature rise current: The value of D.C. current when the temperature rise is Δt=40°C(Ta=20°C).

# SMD Power Inductor CDEIR6D31F

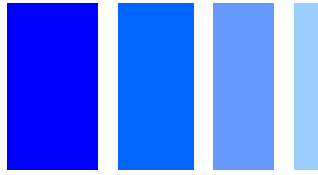


## Saturation Current & Temperature Rise Graph

— L (20°C)    —  $\Delta T$

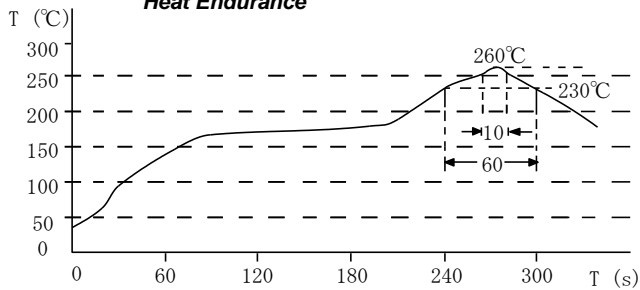


# SMD Power Inductor CDEIR6D31F

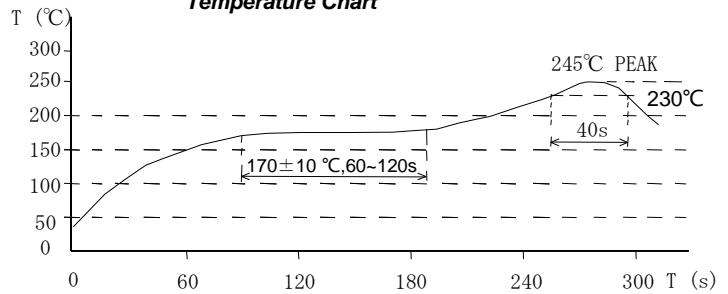


## Solder Reflow Condition

Heat Endurance



Temperature Chart



Please refer to the sales offices on our website - <http://www.sumida.com>

### Hong Kong

Tel.+852-2880-6781  
FAX.+852-2565-9600  
[sales@hk.sumida.com](mailto:sales@hk.sumida.com)

### Saitama(Japan)

Tel.+81-48-691-7300  
FAX.+81-48-691-7340  
[sales@jp.sumida.com](mailto:sales@jp.sumida.com)

### Chicago

Tel.+1-847-545-6700  
FAX. +1-847-545-6720  
[sales@us.sumida.com](mailto:sales@us.sumida.com)

### Shanghai

Tel.+86-21-5836-3299  
FAX.+86-21-5836-3266  
[shanghai.sales@cn.sumida.com](mailto:shanghai.sales@cn.sumida.com)

### Seoul

Tel.+82-2-6237-0777  
FAX.+82-2-6237-0778  
[sales@kr.sumida.com](mailto:sales@kr.sumida.com)

### Obernzell

Tel.+49-8591-937-0  
FAX. +49-8591-937-103  
[contact@eu.sumida.com](mailto:contact@eu.sumida.com)

### Shenzhen

Tel.+86-755-8291-0228  
FAX.+86-755-8291-0338  
[shenzhen.sales@cn.sumida.com](mailto:shenzhen.sales@cn.sumida.com)

### Singapore

Tel.+65-6296-3388  
FAX.+65-6841-4426  
[sales@sg.sumida.com](mailto:sales@sg.sumida.com)

### Neumarkt

Tel.+49-9181-4509-110  
FAX. +49-9181-4509-310  
[infocomp@eu.sumida.com](mailto:infocomp@eu.sumida.com)

### Taipei

Tel.+886-2-8751-2737  
FAX.+886-2-8751-2738  
[sales@tw.sumida.com](mailto:sales@tw.sumida.com)

### San Jose

Tel.+1-408-321-9660  
FAX.+1-408-321-9308  
[sales@us.sumida.com](mailto:sales@us.sumida.com)

# Mouser Electronics

Authorized Distributor

Click to View Pricing, Inventory, Delivery & Lifecycle Information:

Sumida:

[CDEIR6D31FHF-2R2MC](#) [CDEIR6D31FHF-4R7MC](#) [CDEIR8D38FNP-220NC](#) [CDEIR8D38FNP-100NC](#)