

# Data sheet Actuator.

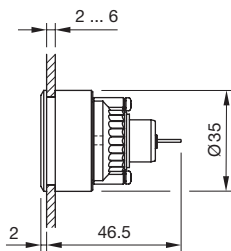
## Part No.: 14-810.910

### Technical data



Design	flush
Front dimension	Ø 35 mm
Terminal	Plug-in terminal, 2.8 x 0.5 mm
Operating voltage	24 V DC ±10 %
Operating voltage tolerance	±10 % %
Operation current	mA
Front cap colour	Black
Front cap material	Aluminium
Front cap surface	anodised
Weight	0.016 kg
IP front protection	IP65, according to DIN EN 60529
Soundpressure	95 db (A) ±8 dB at a distance of 0.1m
Tone frequency	Approx. 3.2 kHz continuous tone only
Operating temperature	- 25 °C ... + 55 °C
Approbations	CQC, EMC
Tightening torque	Fixing nut max. 0.25 Nm
Hints	
	<ul style="list-style-type: none"> <li>▪ For PCB application use print adator</li> </ul>

### Dimension drawings



### Mounting cut-outs

