

Han 6B HBM Rear-Fit SL

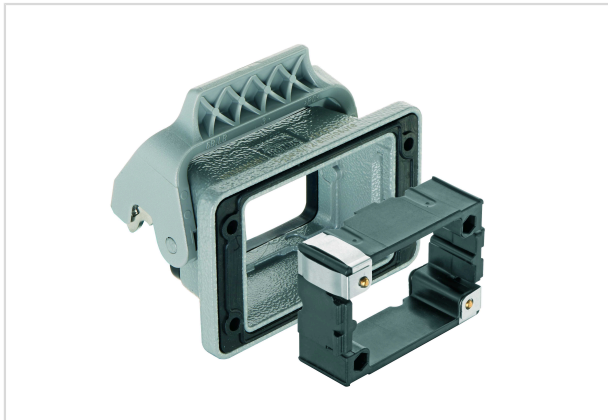


Image is for illustration purposes only. Please refer to product description.

| | |
|--------------------|---|
| Part number | 09 30 006 0391 |
| Specification | Han 6B HBM Rear-Fit SL |
| HARTING eCatalogue | https://b2b.harting.com/09300060391 |

Identification

| | |
|-----------------------------|--------------------------|
| Category | Hoods/Housings |
| Series of hoods/housings | Han [®] B |
| Type of hood/housing | Bulkhead mounted housing |
| Description of hood/housing | Rear mounting |
| Type | Low construction |

Version

| | |
|----------------------------|---|
| Locking type | Single locking lever |
| Han-Easy Lock [®] | Yes |
| Size | 6 B |
| Field of application | Standard hoods/housings for industrial connectors |
| Pack contents | Mounting frame is included within the delivery |

Technical characteristics

| | |
|--|-----------------|
| Limiting temperature | -40 ... +125 °C |
| Degree of protection acc. to IEC 60529 | IP66 |
| Type rating acc. to UL 50 / UL 50E | 4 4X 12 |

Material properties

| | |
|-------------------------|----------------------|
| Material (hood/housing) | Aluminium die-cast |
| Surface (hood/housing) | Powder-coated |
| Colour (hood/housing) | RAL 7037 (dust grey) |



Pushing Performance

Material properties

| | |
|--|---------------------------------------|
| Material (seal) | NBR |
| Material (locking) | Polycarbonate (PC) Stainless steel |
| Colour (locking) | RAL 7037 (dust grey) |
| Material (accessories) | Polyamide (PA) Stainless steel |
| Material flammability class acc. to UL 94 (locking levers) | V-0 |
| RoHS | compliant |
| ELV status | compliant |
| China RoHS | e |
| REACH Annex XVII substances | No |
| REACH ANNEX XIV substances | No |
| REACH SVHC substances | No |

Specifications and approvals

| | |
|-----------|--------|
| Approvals | DNV GL |
|-----------|--------|

Commercial data

| | |
|--------------------------------|--|
| Packaging size | 1 |
| Net weight | 89.5 g |
| Country of origin | China |
| European customs tariff number | 85389099 |
| eCl@ss | 27440202 Shell for industrial connectors |