

MYLAR SPEAKER										
Series	Model	Diameter (mm)	Height (mm)	Impedance (Ω)	Rated Power Input (W)	Max. Power (W)	Fundamental Frequency f _o (Hz)	Frequency Range f _o - (Hz)	SPL (dB)	Page No.
M15IA	M15IA080008C	15.0	4.2	8.0	0.25	0.5	800	20000	72+/-3	7
M15IB	M15IB065008C	15.0	4.2	8.0	0.10	0.25	650	20000	85+/-3	7
M20IA	M20IA080008C	20.0	3.0	8.0	0.30	0.50	800	20000	80+/-3	7
M20IB	M20IB070008H	20.0	3.5	8.0	0.15	0.30	700	4100	89+/-3	8
M20IC	M20IC070008H	20.0	3.2	8.0	0.20	0.40	700	7700	90+/-3	8
M23IA	M23IA070008C	23.0	5.8	8.0	0.50	1.0	700	20000	82+/-3	8
M23IB	M23IB068008H	23.0	3.8	8.0	0.10	0.15	680	8000	91+/-3	9
M23IC	M23IC062008H	23.0	4.5	8.0	0.10	0.20	620	20000	87+/-3	9
M26IA	M26IA060008C	26.0	4.5	8.0	0.30	0.60	600	5000	90+/-3	9
M27IA	M27IA080008C	27.0	5.1	8.0	0.10	0.25	800	5000	82+/-3	10
M27IB	M27IB066016H	26.8	4.3	16.0	0.10	0.15	660	8000	88+/-3	10
M27IC	M27IC045008H	27.0	5.8	8.0	0.08	0.15	450	20000	87+/-3	10
M27ID	M27ID042008H	27.0	4.8	8.0	0.10	0.30	420	6300	89+/-3	11
M28IA	M28IA070008C	28.0	4.9	8.0	1.0	1.50	700	10000	83+/-3	11
M28IB	M28IB075008H	28.0	4.2	8.0	0.25	0.50	750	7600	92+/-3	11
M28IC	M28IC050008H	28.0	4.9	8.0	0.20	0.30	500	6000	98+/-3	12
M29IA	M29IA050008H	29.0	5.8	8.0	0.15	0.25	500	5100	88+/-3	12
M29IB	M29IB090008C	28.7	9.5	8.0	0.10	0.25	900	5000	82+/-3	12
M29EC	M29EC070008C	29.0	9.0	8.0	0.10	0.25	700	5000	78+/-3	13
M30IA	M30IA065008C	30.0	4.8	8.0	0.50	1.0	650	15000	82+/-3	13
M30IB	M30IB065008H	30.0	4.2	8.0	0.20	0.30	650	6800	92+/-3	13
M30IC	M30IC028032H	29.6	5.5	32.0	0.025	0.05	280	20000	81+/-3	14
M30ID	M30ID070032C	29.9	4.8	32.0	0.50	1.0	700	8000	82+/-3	14
M30IE	M30IE065032C	30.0	4.8	32.0	1.0	2.0	650	6000	82+/-3	14
M32IA	M32IA065008C	32.0	5.1	8.0	0.50	1.0	650	10000	83+/-3	15
M36IB	M36IB055008C	35.8	4.5	8.0	0.10	0.25	550	3500	83+/-3	15
M36IC	M36IC075008C	36.0	3.2	8.0	0.25	0.50	750	6000	81+/-3	15
M36ID	M36ID060008C	36.0	4.9	8.0	1.0	1.50	600	10000	83+/-3	16
M36IE	M36IE042004H	36.0	4.7	4.0	0.30	0.60	420	20000	89+/-3	16
M36IF	M36IF045008H	36.0	4.7	8.0	0.15	0.30	450	11000	93+/-3	16
M36IG	M36IG050008H	36.0	4.8	8.0	0.15	0.30	500	4800	91+/-3	17
M36IH	M36IH050008H	36.0	4.9	8.0	0.50	0.80	500	10000	90+/-3	17
M36II	M36II045008H	36.0	4.4	8.0	0.10	0.125	450	2600	92+/-3	17
M36IJ	M36IJ060016	36.0	5.0	16.0	0.50	0.80	600	11500	81+/-3	18
M36IK	M36IK040016	36.0	4.7	16.0	0.20	0.50	400	5000	84+/-3	18
M36IL	M36IL065016H	35.9	5.7	16.0	0.25	0.40	650	3600	93+/-3	18
M36IM	M36IM065008H	36.2	4.85	8.0	0.25	0.40	650	11000	94+/-3	19
M36IN	M36IN048008H	36.0	4.2	8.0	0.40	0.50	480	12000	86.9+/-3	19
M36IO	M36IO050008F	36.0	4.3	8.0	0.25	0.50	500	5000	86+/-3	19
M36IP	M36IP030032F	36.0	5.0	32.0	0.20	0.40	300	5000	86+/-3	20
M36IQ	M36IQ050016C	36.0	3.2	16.0	0.25	0.50	500	5000	78+/-3	20
M36IR	M36IR050016C	36.0	3.2	16.0	0.25	0.50	500	5000	94+/-3	20
M40IE	M40IE060008C	40.0	5.1	8.0	1.0	1.5	600	15000	96+/-3	21

M27 ID



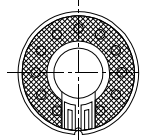
COLOUR	HOUSING	TERMINAL
GOLD	METAL	NIL

ELECTRICAL SPECIFICATIONS

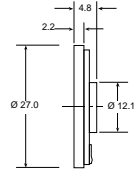
Model No.		M27 ID042008H
Fundamental Frequency (fo) (Hz)		420
Frequency Range (Hz)		fo - 6300
Rated Power Input (W)		0.1
Max. Power (W)		0.3
SPL @ 0.1 W, 10cm (dB)		89 ± 3
Impedance (Ω)		8
Weight (g)		2

DIMENSION

Bottom View



Side View



all dimensions are in mm

M28IA



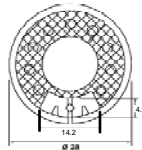
COLOUR	HOUSING	TERMINAL
GOLD	METAL	NIL

ELECTRICAL SPECIFICATIONS

Model No.		M28IA070008C
Fundamental Frequency (fo) (Hz)		700
Frequency Range (Hz)		fo - 10000
Rated Power Input (W)		1
Max. Power (W)		1.5
SPL @ 1W, 1m (dB)		83 ± 3
Impedance (Ω)		8
Weight (g)		5.8

DIMENSION

Bottom View



Side View



all dimensions are in mm

M28IB



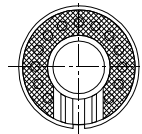
COLOUR	HOUSING	TERMINAL
GOLD	METAL	NIL

ELECTRICAL SPECIFICATIONS

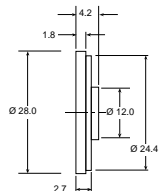
Model No.		M28IB075008H
Fundamental Frequency (fo) (Hz)		750
Frequency Range (Hz)		fo - 7600
Rated Power Input (W)		0.25
Max. Power (W)		0.5
SPL @ 0.1W, 10cm (dB)		92 ± 3
Impedance (Ω)		8
Weight (g)		6

DIMENSION

Bottom View



Side View



all dimensions are in mm