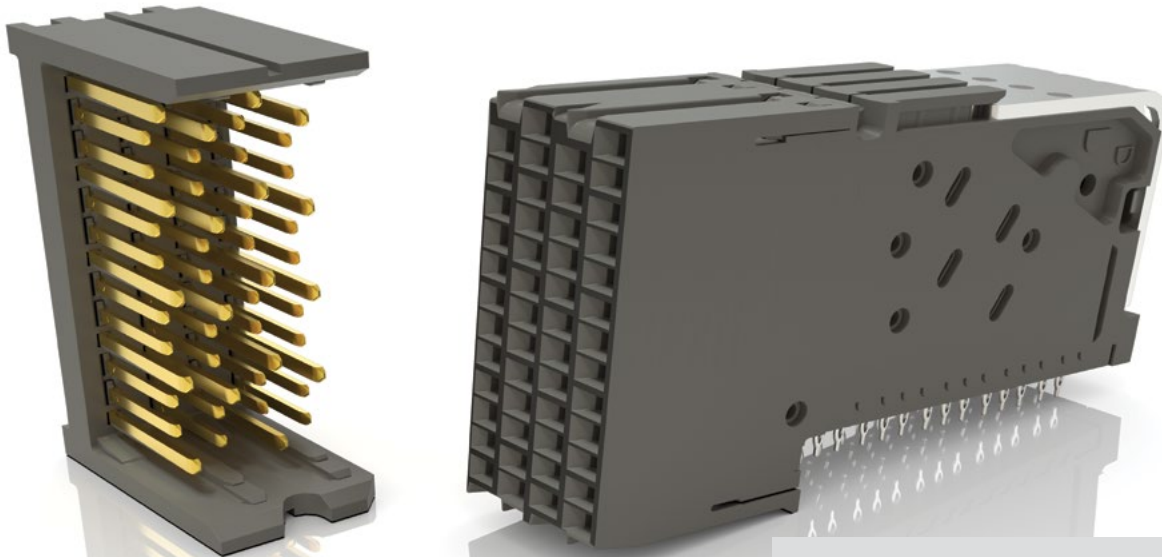


XCede[®] HD

HIGH-DENSITY BACKPLANE HEADERS & SOCKETS

(1.80 mm) .071" PITCH

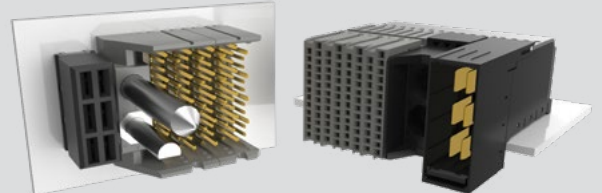
16
Gbps



FEATURES & BENEFITS

- Small form factor and modular design provides significant space-savings and flexibility
- High-performance system
- Up to 84 differential pairs per linear inch
- 3, 4 and 6-pair designs on 4, 6 and 8 columns
- Integrated power, guidance, keying and end walls available
- 85 Ω and 100 Ω options
- Combine any configuration of modules to create one integrated receptacle (BSP Series); corresponding terminal modules are individually mounted to the backplane
- Press-fit extraction and insertion tool options; please visit samtec.com/tooling for details

MODULAR DESIGN



Signal, Power & Keying / Guidance options can be customized in any configuration

HIGH-DENSITY, SMALL FORM FACTOR



XCede[®] HD
Up to 84 pairs per linear inch



Traditional Backplane
Up to 76 pairs per linear inch

(Both shown with six 4-pair, 8 column receptacles)

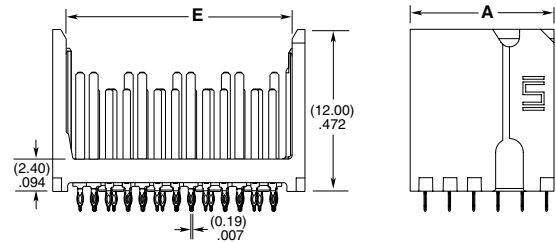
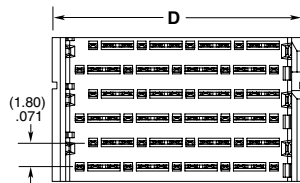
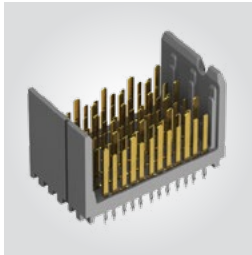
KEY SPECIFICATIONS

PITCH	INSULATOR MATERIAL	CONTACT MATERIAL	PLATING	OPERATING TEMP RANGE
1.80 mm	LCP	Phosphor Bronze (HDTM Series) Copper Alloy (HDTF & HPTS Series)	Au or Sn over 50 μ" (1.27 μm) Ni	-40 °C to + 105 °C (HDTX Series)

(1.80 mm) .071" PITCH • HIGH-DENSITY BACKPLANE HEADER

HDTM	PAIRS	NO. OF COLUMNS	TAIL SIZE	S	VT	SIDE WALLS	GUIDANCE	STAGE COMBO	KEYING
	-3, -4, -6 =Pairs Per Column	-04, -06, -08	-1 =(.4495 mm) .0177" Drill -2 =(.5511 mm) .0217" Drill			-0 = Open (No Walls) -1 = Left -2 = Right -4 = Left Polarizing with left guidance (-4 Pairs N/A) -5 = Right Polarizing with right guidance (-4 Pairs N/A)	-4 or -5 Polarizing Only; Leave Blank for No Guidance -L = Left Side Guide Pin -R = Right Side Guide Pin	-1 = 3 mm Wipe Signal / 4 mm Wipe Ground -2 = 2 mm Wipe Signal / 4 mm Wipe Ground -3 = 3 mm Wipe Signal / 3 mm Wipe Ground -4 = 2 mm Wipe Signal / 3 mm Wipe Ground -5 = 2 mm Wipe Signal / 2 mm Wipe Ground	-4 or -5 Polarizing Only; Leave Blank for No Keying -A thru -H = Position of Flat on Key (See Table)

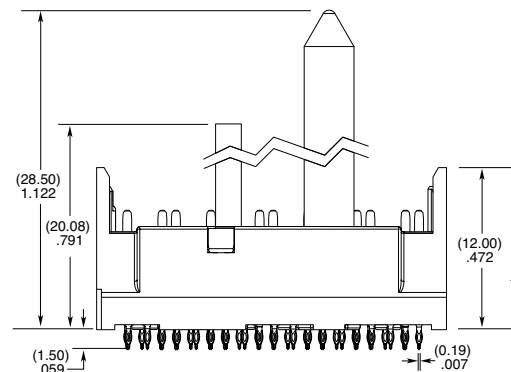
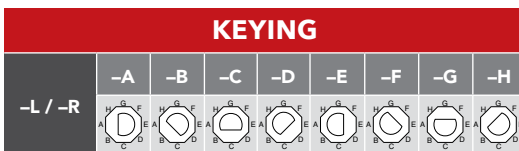
HDTM Board Mates:
HDTF, BSP
(See HDTF for more information.)



HDTM-4-06-1-S-VT-0-1 SHOWN

NO. OF COLUMNS	A			C	
	No Walls	Left Wall	Right Wall	Left Polarize	Right Polarize
-04	(7.06) .278	(8.20) .322	(8.06) .317	N/A	N/A
-06	(10.66) .420	(11.80) .465	(11.66) .459	(17.14) .675	(16.65) .656
-08	(14.26) .561	(15.40) .606	(15.26) .600	(20.74) .817	(20.25) .797

PAIRS PER COLUMN	D	E
	Standard Wall	
-03	(15.10) .594	(13.15) .518
-04	(18.70) .736	(16.75) .659
-06	(25.90) 1.020	(23.95) .943



HDTM-6-04-X-X-VT-4-L-X-A SHOWN

View complete specifications at: samtec.com?HDTM

Notes:
Some lengths, styles and options are non-standard, non-returnable.
XCede® is a registered trademark of Amphenol.

Mouser Electronics

Authorized Distributor

Click to View Pricing, Inventory, Delivery & Lifecycle Information:

Samtec:

[HDTM-3-04-1-S-VT-0-1](#) [HDTM-3-06-1-S-VT-0-1](#) [HDTM-3-08-1-S-VT-0-1](#) [HDTM-4-04-1-S-VT-0-1](#) [HDTM-4-06-1-S-VT-0-1](#) [HDTM-4-08-1-S-VT-0-1](#) [HDTM-3-04-1-S-VT-0-2](#) [HDTM-3-04-2-S-VT-0-4](#) [HDTM-3-06-1-S-VT-0-2](#) [HDTM-3-06-2-S-VT-0-3](#) [HDTM-3-08-1-S-VT-0-2](#) [HDTM-3-08-2-S-VT-0-4](#) [HDTM-6-04-1-S-VT-0-1](#) [HDTM-6-06-1-S-VT-0-1](#) [HDTM-6-06-1-S-VT-0-2](#) [HDTM-6-08-1-S-VT-0-1](#) [HDTM-6-08-1-S-VT-0-2](#) [HDTM-3-08-2-S-VT-0-1](#) [HDTM-6-08-2-S-VT-0-2](#) [HDTM-3-08-2-S-VT-0-2](#) [HDTM-3-04-1-S-VT-0-4](#) [HDTM-3-06-1-S-VT-5-R-2](#) [HDTM-3-08-1-S-VT-0-3](#) [HDTM-6-08-2-S-VT-0-1](#) [HDTM-3-08-2-S-VT-2-1](#) [HDTM-3-08-2-S-VT-4-L-1](#) [HDTM-3-08-2-S-VT-5-R-1](#) [HDTM-4-06-1-S-VT-0-2](#) [HDTM-4-08-1-S-VT-0-2](#) [HDTM-4-08-1-S-VT-0-4](#) [HDTM-3-08-1-S-VT-0-4](#) [HDTM-3-08-1-S-VT-1-1](#) [HDTM-3-08-1-S-VT-1-2](#) [HDTM-3-08-1-S-VT-4-L-1](#) [HDTM-3-08-1-S-VT-5-R-1](#) [HDTM-3-08-2-S-VT-1-1](#) [HDTM-3-06-2-S-VT-0-1](#) [HDTM-4-06-2-S-VT-0-1](#) [HDTM-3-06-1-S-VT-5-R-1](#) [HDTM-3-08-1-S-VT-5-R-1-A](#) [HDTM-4-08-2-S-VT-0-1](#) [HDTM-4-06-1-S-VT-0-4](#)