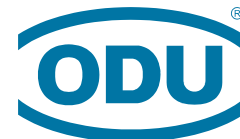


PROTECTIVE CAPS

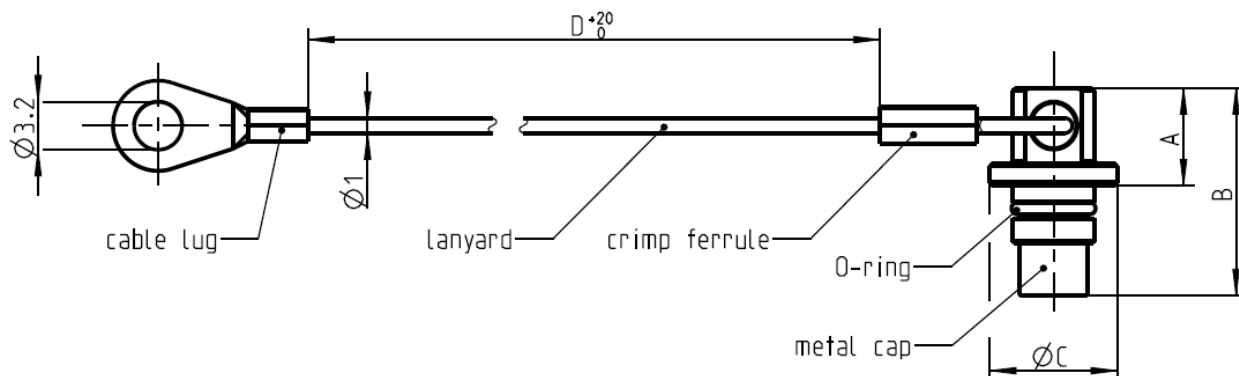
ODU AMC[®] HIGH-DENSITY

“CHROME VERSION”



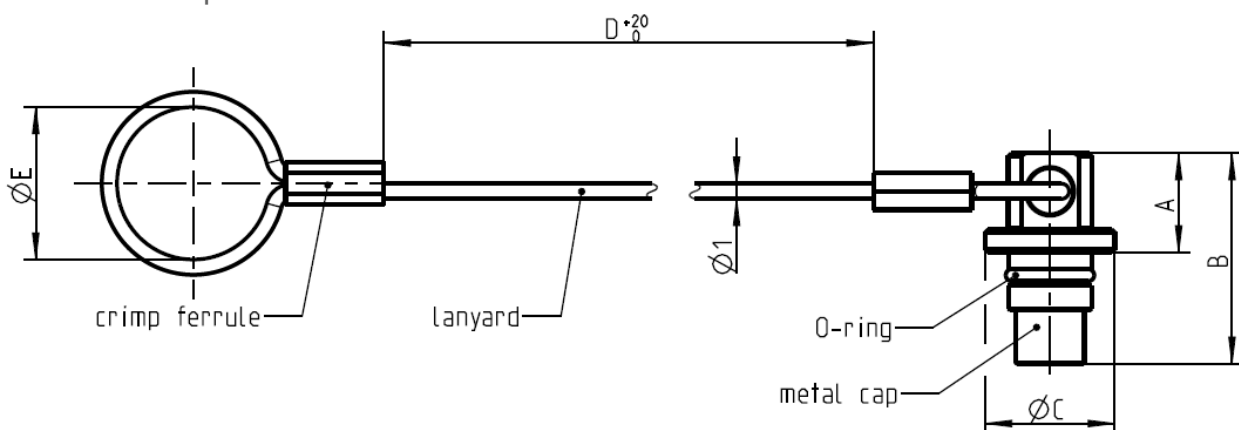
A PERFECT ALLIANCE.

Protective Caps for receptacle GK and G6



Size	Part number	Dimensions in mm			
		A	B	C	D
00	713.650.097.004.315	6,5	13,8	8,6	70
0	700.650.097.004.315	6,5	13,8	10,7	75
1	701.650.097.004.315	6,5	13,8	13,5	80
1.5	715.650.097.004.315	6,5	13,8	14,8	85

Protective Caps for in-line receptacle K1

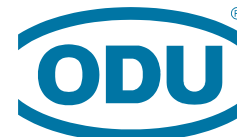


Size	Part number	Dimensions in mm				
		A	B	C	D	E
00	713.650.097.005.315	6,5	13,8	8,6	70	10
0	700.650.097.005.315	6,5	13,8	10,7	75	13
1	701.650.097.005.315	6,5	13,8	13,5	80	15
1.5	715.650.097.005.315	6,5	13,8	14,8	85	17

PROTECTIVE CAPS

ODU AMC[®] HIGH-DENSITY

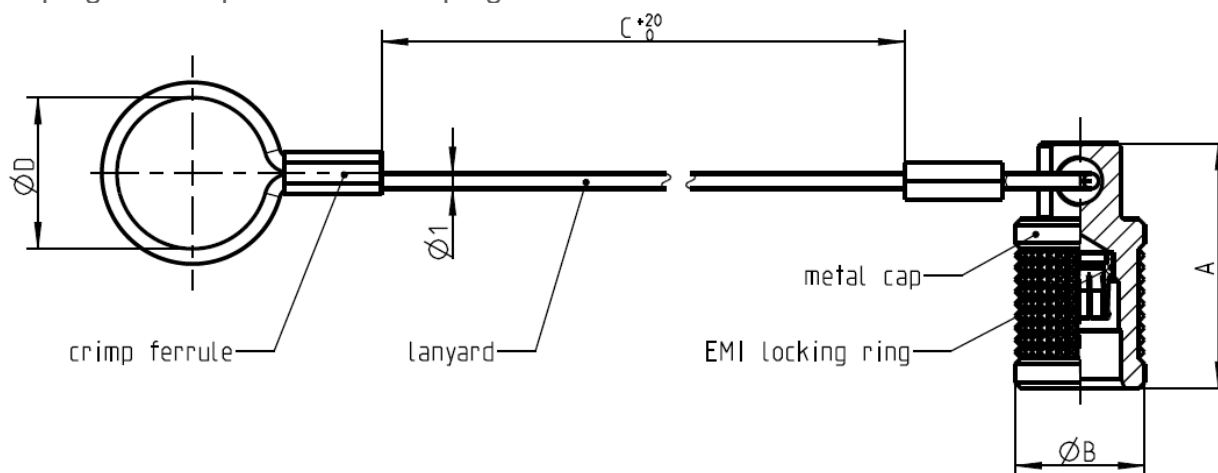
“CHROME VERSION”



A PERFECT ALLIANCE.

Protective Caps

for plug A1 and panel mounted plug GW



Size	Part number	Dimensions in mm			
		A	B	C	D
00	713.650.097.003.315	16,2	8,6	70	10
0	700.650.097.003.315	16,2	10,7	75	13
1	701.650.097.003.315	16,2	13,5	80	15
1.5	715.650.097.003.315	16,2	14,8	85	17

Environmental characteristics

Requirement	Performance
Tightness	IP68 (2 m)

Materials and surfaces

Part	Material / Surface
Metal Cap	Brass / matt chrome coated nickel
Crimp ferrule	Brass / silver
Cable lug	Brass / silver
EMI locking ring	CuBe / gold coated nickel
Lanyard	Polyamid / white
O-ring	FKM / black

Mouser Electronics

Authorized Distributor

Click to View Pricing, Inventory, Delivery & Lifecycle Information:

ODU USA:

[700-650-097-003-315](#) [700-650-097-004-315](#) [700-650-097-005-315](#) [715-650-097-003-315](#) [715-650-097-004-315](#)
[715-650-097-005-315](#) [701-650-097-003-315](#) [701-650-097-004-315](#) [701-650-097-005-315](#) [713-650-097-003-315](#) [713-](#)
[650-097-004-315](#) [713-650-097-005-315](#)