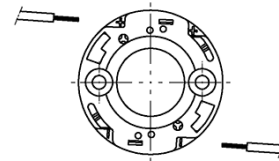
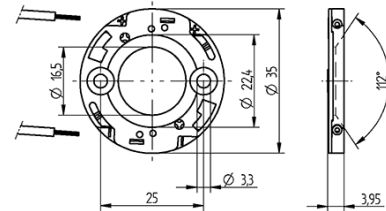
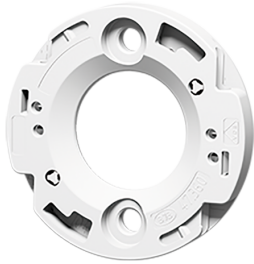


COB connector Ø 35 mm for LED array 17.85 x 17.85 mm 47.360.1040.50



8.0 + 1 mm



0,35-0,5 mm²



0.35-0.5 mm²

COB connector Ø 35 mm for LED array 17.85 x 17.85 mm 47.360.1040.50



DESCRIPTION

With integrated COB holder and interface for reflectors 47.935 and 35.835

Easy pre-assembly of LED

Screw mounting: for screws M3 and locking washer

Max. torque for screw fixing 0.5 Nm*

Strip length: 8+1 mm

Polarity symbols of connector and LED must be observed in assembly

Specification of LED manufacturer must be observed

In a series connection of LED modules, the air gap and creepage distances has to be sized that each module covers the total voltage of the series connection

*Please note the max torque of the COB manufacturer

Packaging quantity:	840.000
Product name:	COB connector Ø 35 mm for LED array 17.85 x 17.85 mm
Packaging type:	Bag
Country of origin:	DE
Mounting method 1:	Screw mount
Mounting method 2:	P2F fixing with 28.902.-102
Mounting method 3:	Tip for fastening by screws: The screw chamber of the 47.360 series has a height of 1.9 mm. The screw head must not be higher, otherwise the reflector will fit poorly or not at all.
Prefixation of COB:	Yes
Material:	Housing: PBT Contacts: CuSn
LED manufacturer:	Cree
LED Typ:	CXA/CXB 1816, CXA/CXB 1820, CXB 1825, CXB 1840, CXB 1830
Conductor cross-section:	0.35-0.5 mm ²
Rating:	Rating: 3A / 150 VDC
Weight:	2.7
Pkg.:	840

Suitable for the following LED models:

LED Manufacturer	LED Type	More Information
Cree	CXA/CXB 1816	http://www.cree.com
Cree	CXA/CXB 1820	http://www.cree.com
Cree	CXB 1825	http://www.cree.com
Cree	CXB 1830	http://www.cree.com
Cree	CXB 1840	http://www.cree.com