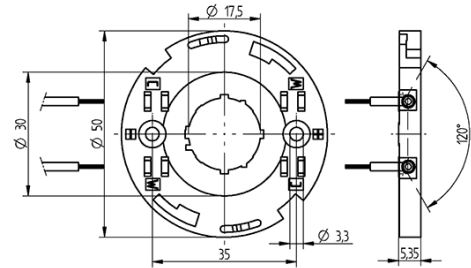
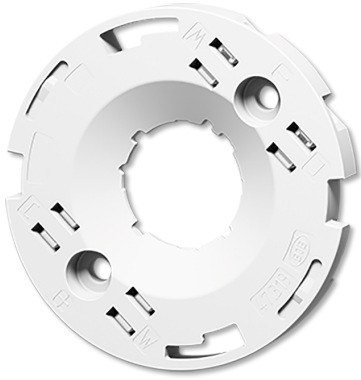


# COB connector Ø 50 mm for LED array 18.8 x 18.8 mm 47.319.2371.50



0,25 - 0,5 mm<sup>2</sup>



0,75 mm<sup>2</sup>

# COB connector Ø 50 mm for LED array 18.8 x 18.8 mm 47.319.2371.50



## DESCRIPTION

With integrated reflector interface  
Screw mounting: for screws M3 and locking washer  
Max. torque for screw fixing 0.5 Nm\*  
Strip length: 7-1 mm  
Polarity of LED must be observed  
Specifications of LED manufacturer must be observed  
cURus: For limited applications  
VDE-Reg. No. E289  
\*Please note the max torque of the COB manufacturer

Packaging quantity:	504.000
Product name:	COB connector Ø 50 mm for LED array 18.8 x 18.8 mm
Packaging type:	Bag
Country of origin:	DE
Mounting method 1:	Screw mount
Mounting method 2:	P2F fixing with 28.902.-102
Prefixation of COB:	No
Material:	Housing: PBT Contacts: CuSn
LED manufacturer:	Bridgelux, LUMILEDS
LED Typ:	Vesta (LES 13 mm), LUXEON Fusion Spot CSP Array
Conductor cross-section:	0.75 mm <sup>2</sup>
Approval:	cURus
cULus file no.:	E-345385
Rating:	3A / 150 VDC
Pkg.:	504

## Suitable for the following LED models:

LED Manufacturer	LED Type	More Information
Bridgelux	Vesta (LES 13 mm)	<a href="http://www.bridgelux.com">http://www.bridgelux.com</a>
LUMILEDS	LUXEON Fusion Spot CSP Array	<a href="http://www.philipslumileds.com">http://www.philipslumileds.com</a>