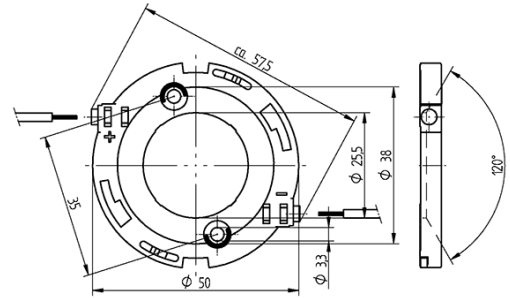


# COB connector Ø 50 mm for LED array 28 x 28 mm 47.319.2033.50



0,75 mm<sup>2</sup>



0,75 mm<sup>2</sup>

# COB connector Ø 50 mm for LED array 28 x 28 mm 47.319.2033.50



## DESCRIPTION

With integrated reflector interface  
Screw mounting: for screws M3 and locking washer  
Max. torque for screw fixing 0.5 Nm\*  
Strip length: 7-1 mm  
Polarity of LED must be observed  
Specifications of LED manufacturer must be observed  
cURus: For limited applications  
VDE-Reg. No. E289  
\*Please note the max torque of the COB manufacturer

|                          |   |
|--------------------------|---|
| Packaging quantity:      | 504.000   |
| Product name:            | COB connector Ø 50 mm for LED array 28 x 28 mm  |
| Packaging type:          | Bag   |
| Country of origin:       | DE  |
| Mounting method 1:       | Screw mount   |
| Mounting method 2:       | P2F fixing with 28.902.-102   |
| Prefixation of COB:      | Yes   |
| Material:                | Housing: PBT Contacts: CuSn   |
| LED manufacturer:        | Seoul Semiconductor, iLED, GLBTECH, LG Innotek, Sunpu, Prolight Opto, Luminus, Lextar, Itswell, Edison, Citizen, Bridgelux, Cree  |
| LED Typ:                 | PB40H02, SAW x2296A, LEMWM28-40W, PB20H01, COB-Q series, SAW x229AAA, PB38V03, 37W L-COB G2, G7, CLM-22 / CXM-22, V22, PB38H01, PB38U02, SP22N-4090, Opto 40W, ZC25/40/60, GME2821, CLU04X, CLU04X / 73X, CHM-14, PB30U03, PB20U02, PB40U03, CMU 2236, PACG 110, SAW x2298A |
| Conductor cross-section: | 0.75 mm <sup>2</sup>  |
| Approval:                | cURus   |
| cULus file no.:          | E-345385  |
| Rating:                  | 3A / 150 VDC  |
| Weight:                  | 5   |
| Pkg.:                    | 504   |

## Suitable for the following LED models:

| LED Manufacturer    | LED Type        | More Information  |
|---------------------|-----------------|---|
| Luminus             | CLM-22 / CXM-22 | <a href="http://www.luminus.com">http://www.luminus.com</a>                     |
| GLBTECH             | GME2821         | <a href="http://www.high-cri-led.com">http://www.high-cri-led.com</a>           |
| iLED                | SP22N-4090      | <a href="http://www.iledm.com">http://www.iledm.com</a>                         |
| Sunpu               | G7              | <a href="http://www.sunpuled.com">http://www.sunpuled.com</a>                   |
| LG Innotek          | LEMWM28-40W     | <a href="http://ledlighting.lginnotek.com">http://ledlighting.lginnotek.com</a> |
| Seoul Semiconductor | ZC25/40/60      | <a href="http://www.seoulsemicon.com">http://www.seoulsemicon.com</a>           |
| Lextar              | PB20H01         | <a href="http://www.lextar.com">http://www.lextar.com</a>                       |
| Edison              | Opto 40W        | <a href="http://www.edison-opto.com.tw">http://www.edison-opto.com.tw</a>       |
| Citizen             | CLU04X / 73X    | <a href="http://ce.citizen.co.jp">http://ce.citizen.co.jp</a>                   |

# COB connector Ø 50 mm for LED array 28 x 28 mm 47.319.2033.50



---

|                     |              |   |
|---------------------|--------------|---|
| Itswell             | COB-Q series | <a href="http://www.itswell.com">http://www.itswell.com</a>                     |
| Prolight Opto       | PACG 110     | <a href="http://www.prolightopto.com">http://www.prolightopto.com</a>           |
| Citizen             | CLU04X       | <a href="http://ce.citizen.co.jp">http://ce.citizen.co.jp</a>                   |
| Lextar              | PB38H01      | <a href="http://www.lextar.com">http://www.lextar.com</a>                       |
| Lextar              | PB30U03      | <a href="http://www.lextar.com">http://www.lextar.com</a>                       |
| Lextar              | PB20U02      | <a href="http://www.lextar.com">http://www.lextar.com</a>                       |
| Lextar              | PB40U03      | <a href="http://www.lextar.com">http://www.lextar.com</a>                       |
| Lextar              | PB40H02      | <a href="http://www.lextar.com">http://www.lextar.com</a>                       |
| Bridgelux           | V22          | <a href="http://www.bridgelux.com">http://www.bridgelux.com</a>                 |
| Seoul Semiconductor | SAW x2296A   | <a href="http://www.seoulsemicon.com">http://www.seoulsemicon.com</a>           |
| Luminus             | CHM-14       | <a href="http://www.luminus.com">http://www.luminus.com</a>                     |
| LG Innotek          | 37W L-COB G2 | <a href="http://ledlighting.lginnotek.com">http://ledlighting.lginnotek.com</a> |
| Lextar              | PB38U02      | <a href="http://www.lextar.com">http://www.lextar.com</a>                       |
| Lextar              | PB38V03      | <a href="http://www.lextar.com">http://www.lextar.com</a>                       |
| Seoul Semiconductor | SAW x229AAA  | <a href="http://www.seoulsemicon.com">http://www.seoulsemicon.com</a>           |
| Seoul Semiconductor | SAW x2298A   | <a href="http://www.seoulsemicon.com">http://www.seoulsemicon.com</a>           |
| Cree                | CMU 2236     | <a href="http://www.cree.com">http://www.cree.com</a>                           |

---